

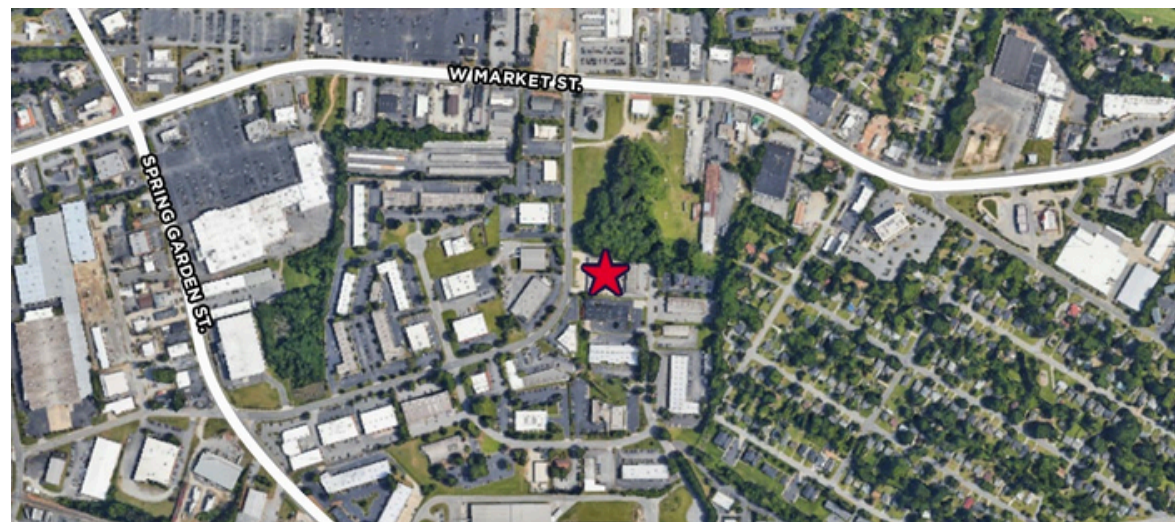
FOR LEASE

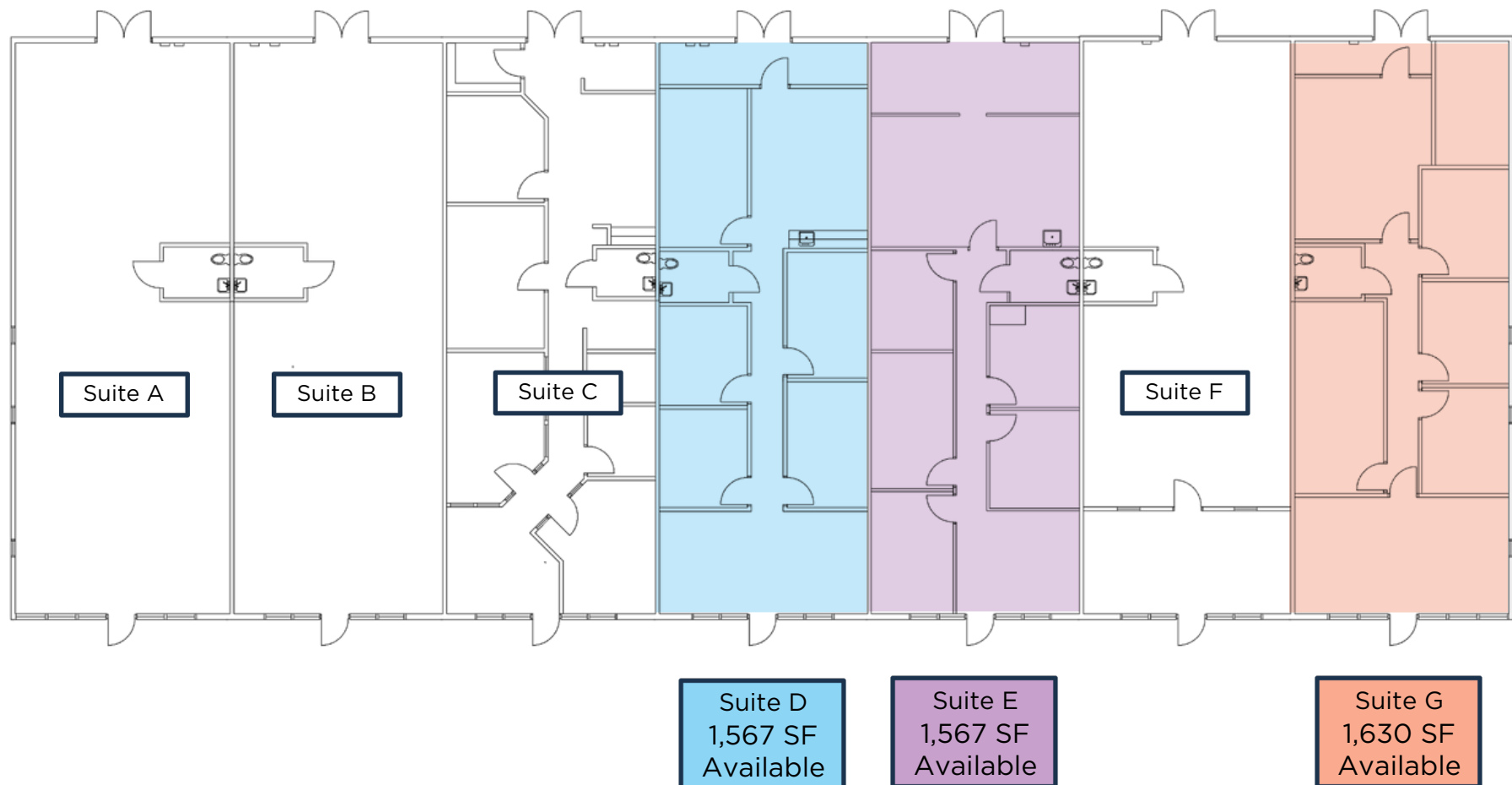
Property Highlights

- Flexible size and office configurations
- Excellent access to Wendover Ave., I-40 & W Market St
- Ample Parking

Ryan Gioffre
Senior Director
+1 336 821 3822
ryan.gioffre@cushwake.com

628 Green Valley Road, Ste. 202
Greensboro, NC 27408
Main +1 336 668 9999
Fax +1 336 668 0888
cushmanwakefield.com



AVAILABILITY

Ryan Gioffre
Senior Director
+1 336 821 3822
ryan.gioffre@cushwake.com

628 Green Valley Road, Ste. 202
Greensboro, NC 27408
Main +1 336 668 9999
Fax +1 336 668 0888
cushmanwakefield.com



Ryan Gioffre
Senior Director
+1 336 821 3822
ryan.gioffre@cushwake.com

628 Green Valley Road, Ste. 202
Greensboro, NC 27408
Main +1 336 668 9999
Fax +1 336 668 0888
cushmanwakefield.com