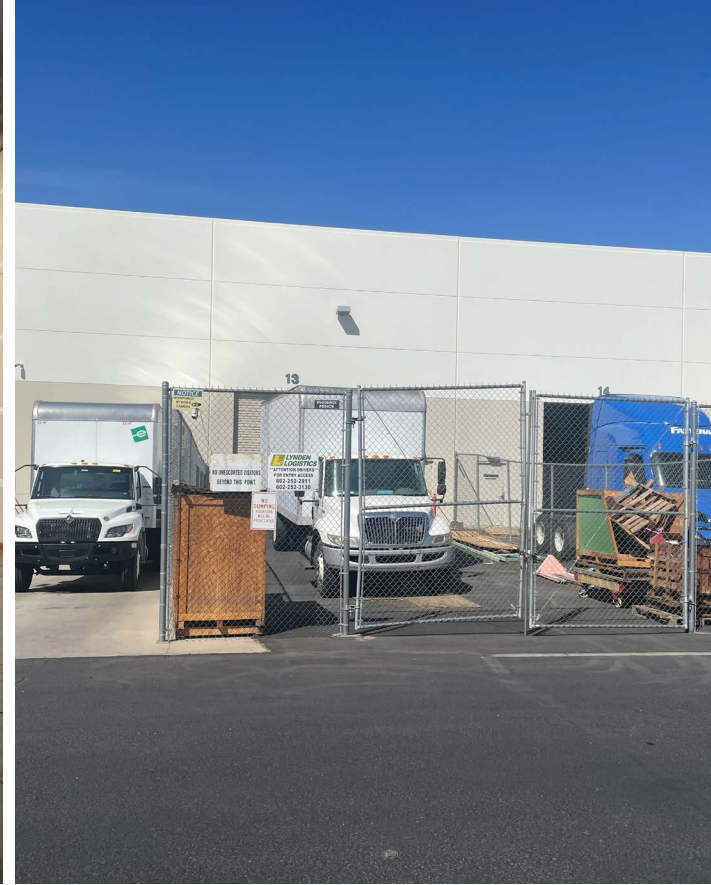
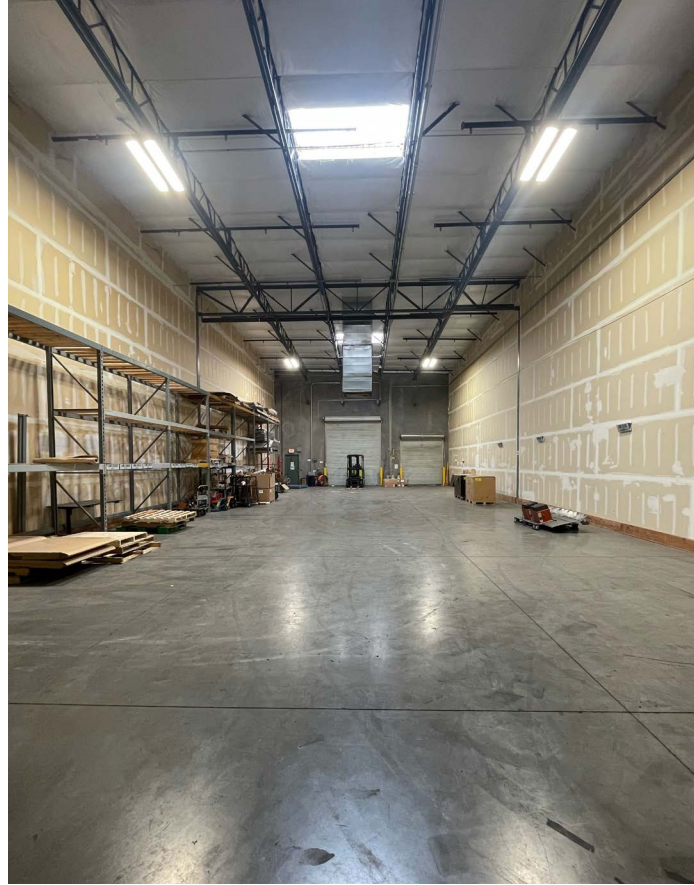


±5,045 SF FOR SUBLEASE

1775 E UNIVERSITY DRIVE

PHOENIX, AZ 85034





PROPERTY HIGHLIGHTS

- ±5,045 SF
- 12, 18 or 24-month sublease term
- 22' Clear height
- (1) Dock high door
- (1) Grade level door
- Built in 2008
- Evap cooling
- Small, fenced yard in loading area
- A-2 zoning, city of Phoenix

AERIAL MAP



FOR MORE INFORMATION, PLEASE CONTACT:

Joshua Wyss, SIOR
Executive Director
+1 602 224 4407
joshua.wyss@cushwake.com

Christian Coraggio
Director
+1 602 224 4463
christian.coraggio@cushwake.com

2555 East Camelback Road, Suite 400
Phoenix, AZ 85016
cushmanwakefield.com



©2025 Cushman & Wakefield. All rights reserved. The information contained in this communication is strictly confidential. This information has been obtained from sources believed to be reliable but has not been verified. NO WARRANTY OR REPRESENTATION, EXPRESS OR IMPLIED, IS MADE AS TO THE CONDITION OF THE PROPERTY (OR PROPERTIES) REFERENCED HEREIN OR AS TO THE ACCURACY OR COMPLETENESS OF THE INFORMATION CONTAINED HEREIN, AND SAME IS SUBMITTED SUBJECT TO ERRORS, OMISSIONS, CHANGE OF PRICE, RENTAL OR OTHER CONDITIONS, WITHDRAWAL WITHOUT NOTICE, AND TO ANY SPECIAL LISTING CONDITIONS IMPOSED BY THE PROPERTY OWNER(S). ANY PROJECTIONS, OPINIONS OR ESTIMATES ARE SUBJECT TO UNCERTAINTY AND DO NOT SIGNIFY CURRENT OR FUTURE PROPERTY PERFORMANCE.

