

AVAILABLE FOR SUBLEASE

2801 ALFT LANE SUITE 200

ELGIN, IL



2801 ALFT LANE SUITE 200



SITE AERIAL



PROPERTY FEATURES

Total Building Size: 308,455 SF

Available Size: 64,624 SF

Office Size: 2,540 SF

Sublease Through: August 31, 2026

Occupancy: Available immediately

Loading: 11 exterior docks with levelers

Clear Height: 32'

Power: 400 Amps @ 480 volts

Sprinkler: ESFR

Parking: 60

Asking Lease Rate: \$9.00 Gross

Use:

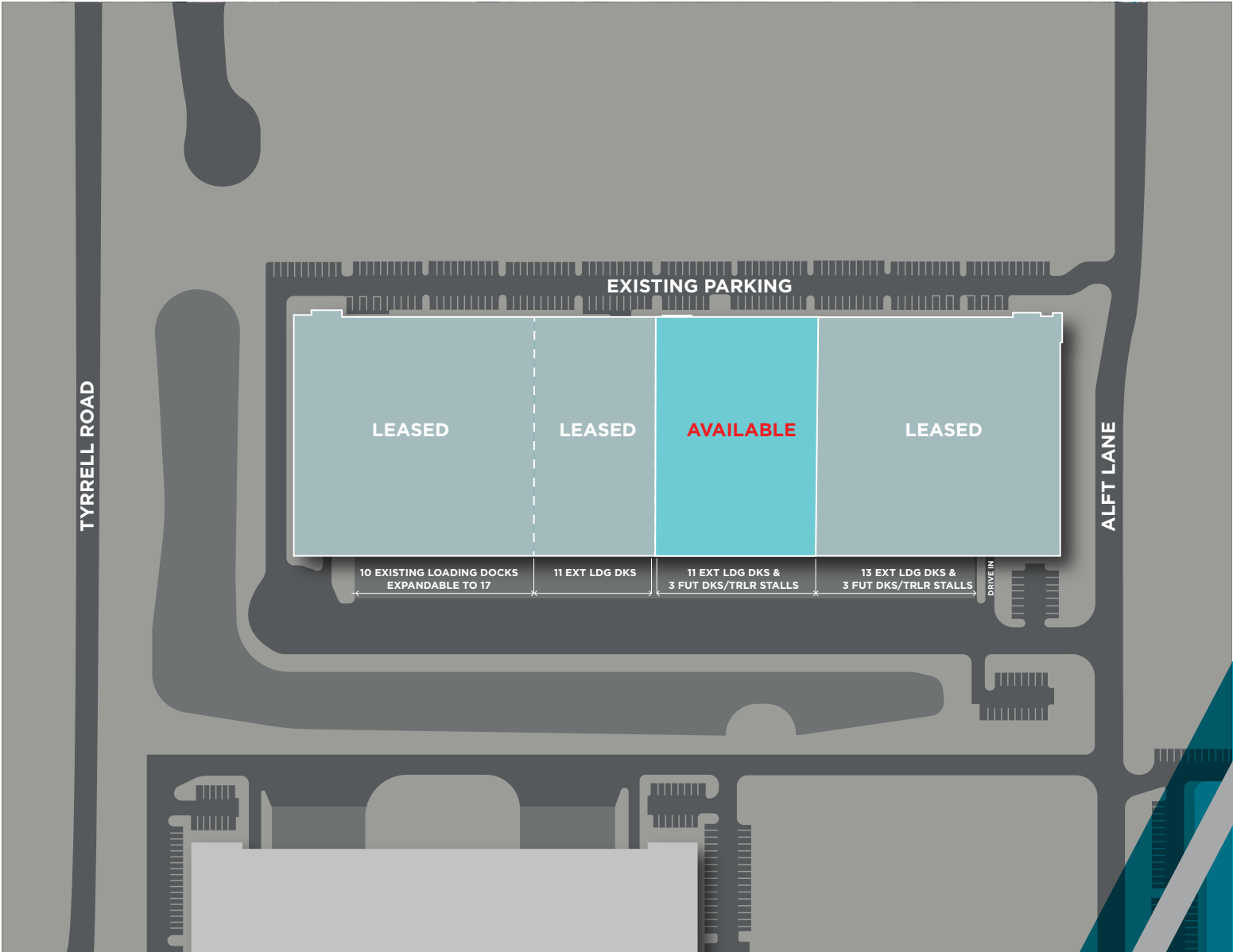
**Ideal for short term
distribution**

2801 ALFT LANE

SUITE 200



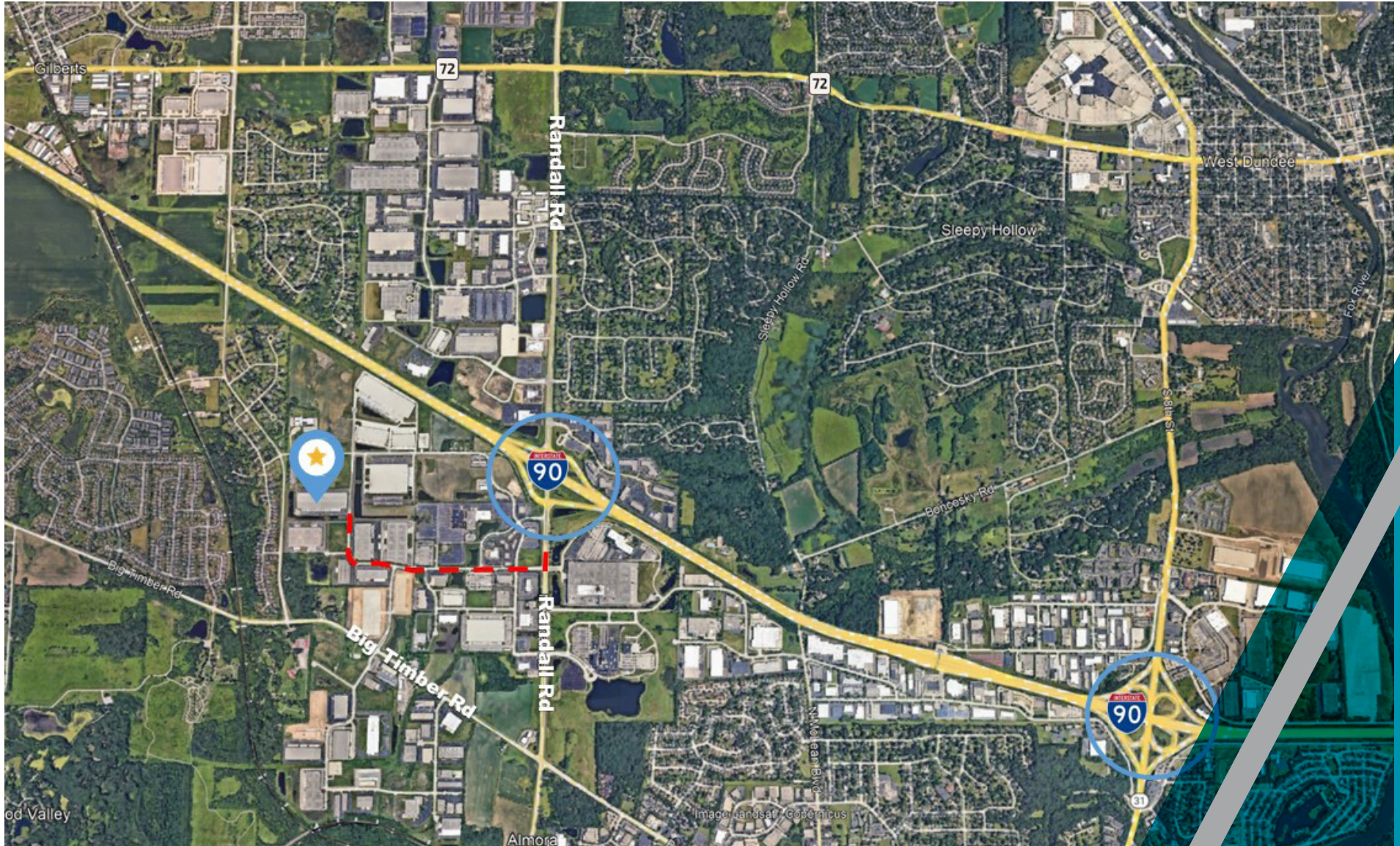
SITE PLAN

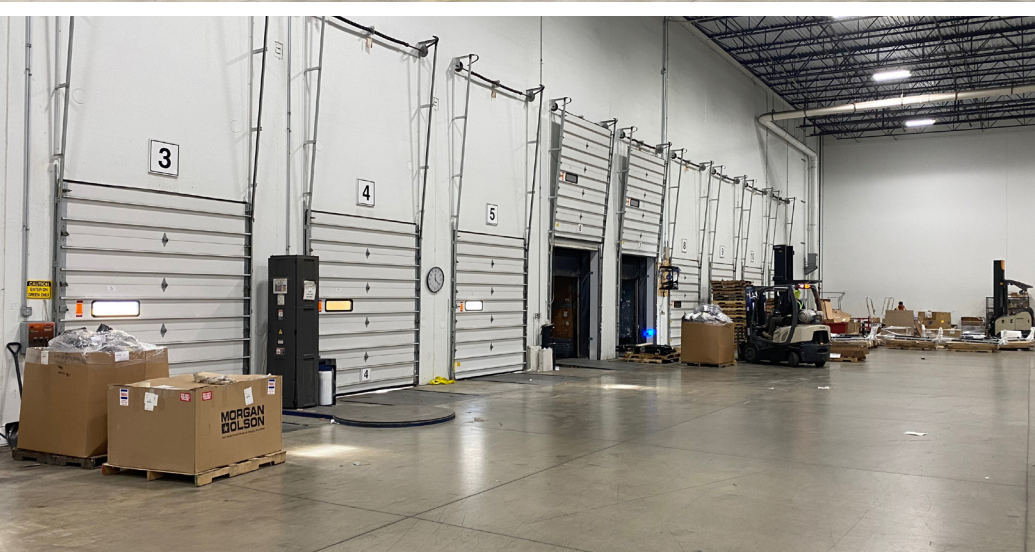


2801 ALFT LANE SUITE 200



LOCATION AERIAL





For more information, please contact:

Jeff Matella

Director
+1 847 720 1349
jeff.matella@cushwake.com

Michael Labek

Senior Associate
+1 312 470 2309
michael.labek@cushwake.com

Elizabeth Schoenheider

Associate
+1 847 720 1328
elizabeth.schoenheider@cushwake.com

**9500 W Bryan Mawr Avenue
Suite 600
Rosemont, IL 60018
cushmanwakefield.com**

©2025 Cushman & Wakefield. All rights reserved. The information contained in this communication is strictly confidential. This information has been obtained from sources believed to be reliable but has not been verified. NO WARRANTY OR REPRESENTATION, EXPRESS OR IMPLIED, IS MADE AS TO THE CONDITION OF THE PROPERTY (OR PROPERTIES) REFERENCED HEREIN OR AS TO THE ACCURACY OR COMPLETENESS OF THE INFORMATION CONTAINED HEREIN, AND SAME IS SUBMITTED SUBJECT TO ERRORS, OMISSIONS, CHANGE OF PRICE, RENTAL OR OTHER CONDITIONS, WITHDRAWAL WITHOUT NOTICE, AND TO ANY SPECIAL LISTING CONDITIONS IMPOSED BY THE PROPERTY OWNER(S). ANY PROJECTIONS, OPINIONS OR ESTIMATES ARE SUBJECT TO UNCERTAINTY AND DO NOT SIGNIFY CURRENT OR FUTURE PROPERTY PERFORMANCE.

