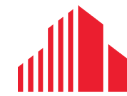


# FOR LEASE | OFFICE/RETAIL

1305-1319 COMMISSIONERS ROAD EAST

London, ON N6M 0A8



**CUSHMAN &  
WAKEFIELD**

Southwestern Ontario



ANCHOR TENANT

## ACTIVITY PLEX

	UNIT	AVAILABLE SPACE	ASKING NET RENT	ADDITIONAL RENT
LEASED	E3B	1,498 SF	\$18.00 PSF	\$8.00 PSF*
LEASED	E4	2,485 SF	\$18.00 PSF	\$8.00 PSF*
LEASED	E5	1,599 SF	\$18.00 PSF	\$8.00 PSF*
LEASED	E6	2,032 SF	\$18.00 PSF	\$8.62 PSF*
LEASED	E7	4,057 SF	\$18.00 PSF	\$8.62 PSF*
LEASED	E9	2,031 SF	\$18.00 PSF	\$8.00 PSF*
LEASED	C	6,214 SF	\$18.00 PSF	\$8.62 PSF*
LEASED	C1	5,055 SF	\$18.00 PSF	\$8.00 PSF*
LEASED	SUITE 102	11,298 SF	\$16.00 PSF	\$13.09 PSF**
LEASED	SUITE 112	3,648 SF	\$20.00 PSF	\$13.09 PSF*
	SUITE 115	10,724 SF	\$16.00 PSF	\$13.09 PSF**
	SUITE 202	3,300 SF	\$20.00 PSF	\$13.09 PSF**
Additional rent inclusive of		*building insurance, common area costs and property taxes		
		**building insurance, common area costs, property taxes and utilities		
Anchor tenant operating: ActivityPlex				

**TYLER DESJARDINE**

*Sales Representative*

519 438 5403

tyler.desjardine@cushwakeswo.com

**CUSHMAN & WAKEFIELD  
SOUTHWESTERN ONTARIO**

850 Medway Park Dr, Suite 201

London, Ontario N6G 5C6

[www.cushwakeswo.com](http://www.cushwakeswo.com)

©2025 Cushman & Wakefield Southwestern Ontario, Real Estate Brokerage, Independently Owned and Operated. A Member of the Cushman & Wakefield Alliance. This information has been obtained from sources believed to be reliable but has not been verified. No warranty or representation, express or implied, is made as to the condition of the property (or properties) referenced herein or as to the accuracy or completeness of the information contained herein, and same is submitted subject to errors, omissions, change of price, rental or other conditions, withdrawal without notice, and to any special listing conditions imposed by the property owner(s). Any projections, opinions or estimates are subject to uncertainty and do not signify current or future property performance. All rights reserved.

# FOR LEASE | OFFICE/RETAIL

## 1305-1319 COMMISSIONERS ROAD EAST

London, ON N6M 0A8



## PROPERTY HIGHLIGHTS

ANCHOR TENANT OPERATING: ACTIVITYPLEX

- **Zoning:** CSA5 - which permits a wide range of uses
- **Signage:** Pylon and Signband available
- **Parking:** Plenty of on-site parking
- This site is located on the South East corner of Commissioners Road East and Highbury Avenue North
- Easy access to Hwy 401 & Hwy 402
- Located on a major bus route
- Daily traffic counts are 40,000 vehicles per day along Highbury Avenue North and 20,000 along Commissioners Road East
- Close proximity to existing residential and future residential developments
- Tenants open at the property now include: Code Ninjas, KNS Martial Arts, FunVilla, Dance London, Tlny Hoppers, UpLift Performance Training, Smarts Baseball 360, Dominos Pizza etc.

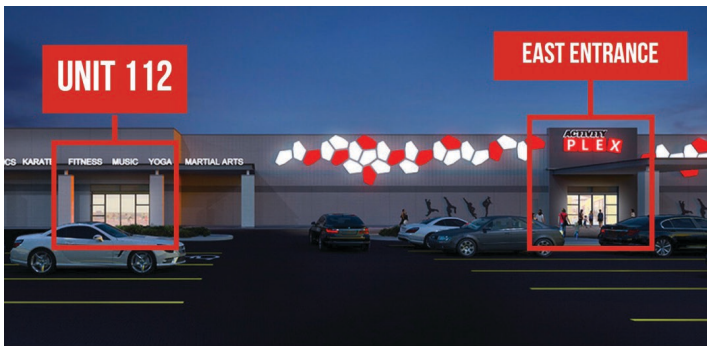


**TYLER DESJARDINE**  
*Sales Representative*  
519 438 5403  
[tyler.desjardine@cushwakeswo.com](mailto:tyler.desjardine@cushwakeswo.com)

**CUSHMAN & WAKEFIELD**  
**SOUTHWESTERN ONTARIO**  
850 Medway Park Dr, Suite 201  
London, Ontario N6G 5C6  
[www.cushwakeswo.com](http://www.cushwakeswo.com)



**FOR LEASE | OFFICE/RETAIL**  
**1305-1319 COMMISSIONERS ROAD EAST**  
*London, ON N6M 0A8*



**TYLER DESJARDINE**  
*Sales Representative*  
519 438 5403  
[tyler.desjardine@cushwakeswo.com](mailto:tyler.desjardine@cushwakeswo.com)

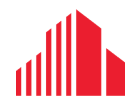
**CUSHMAN & WAKEFIELD**  
**SOUTHWESTERN ONTARIO**  
850 Medway Park Dr, Suite 201  
London, Ontario N6G 5C6  
[www.cushwakeswo.com](http://www.cushwakeswo.com)



# FOR LEASE | OFFICE/RETAIL

1305-1319 COMMISSIONERS ROAD EAST

London, ON N6M 0A8



**CUSHMAN &  
WAKEFIELD**

Southwestern Ontario

## SITE PLAN



**TYLER DESJARDINE**

*Sales Representative*

519 438 5403

tyler.desjardine@cushwakeswo.com

**CUSHMAN & WAKEFIELD**  
**SOUTHWESTERN ONTARIO**

850 Medway Park Dr, Suite 201

London, Ontario N6G 5C6

[www.cushwakeswo.com](http://www.cushwakeswo.com)

# FOR LEASE | OFFICE/RETAIL

1305-1319 COMMISSIONERS ROAD EAST

London, ON N6M 0A8



**CUSHMAN &  
WAKEFIELD**

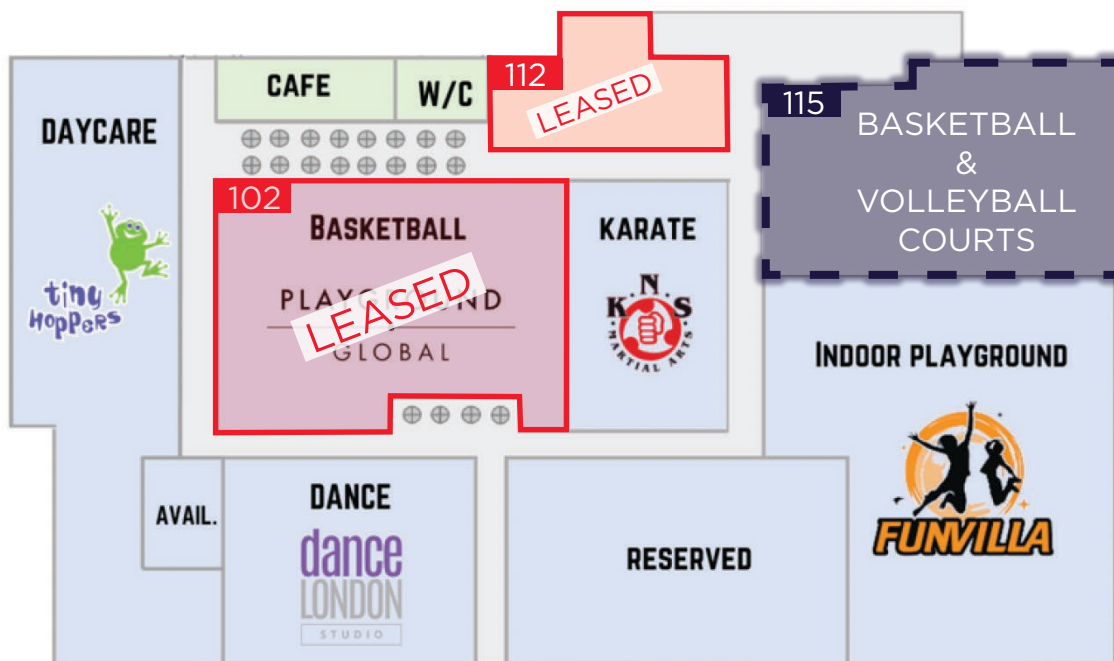
Southwestern Ontario

## FLOOR PLAN | ACTIVITY PLEX

### SECOND FLOOR



### MAIN FLOOR



### ACTIVITYPLEX

	UNIT	AVAILABLE SPACE
LEASED	SUITE 102	APPROX. 11,298 SF
LEASED	SUITE 112	APPROX. 3,648 SF
	SUITE 115	APPROX. 10,724 SF
	SUITE 202	APPROX. 3,300 SF

**TYLER DESJARDINE**

*Sales Representative*

519 438 5403

[tyler.desjardine@cushwakeswo.com](mailto:tyler.desjardine@cushwakeswo.com)

**CUSHMAN & WAKEFIELD  
SOUTHWESTERN ONTARIO**

850 Medway Park Dr, Suite 201

London, Ontario N6G 5C6

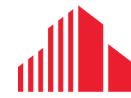
[www.cushwakeswo.com](http://www.cushwakeswo.com)



# FOR LEASE | OFFICE/RETAIL

1305-1319 COMMISSIONERS ROAD EAST

London, ON N6M 0A8



**CUSHMAN &  
WAKEFIELD**

Southwestern Ontario

## PLAZA IMAGES



**TYLER DESJARDINE**

*Sales Representative*

519 438 5403

[tyler.desjardine@cushwakeswo.com](mailto:tyler.desjardine@cushwakeswo.com)

**CUSHMAN & WAKEFIELD  
SOUTHWESTERN ONTARIO**

850 Medway Park Dr, Suite 201

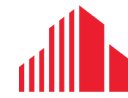
London, Ontario N6G 5C6

[www.cushwakeswo.com](http://www.cushwakeswo.com)

©2025 Cushman & Wakefield Southwestern Ontario, Real Estate Brokerage, Independently Owned and Operated. A Member of the Cushman & Wakefield Alliance. This information has been obtained from sources believed to be reliable but has not been verified. No warranty or representation, express or implied, is made as to the condition of the property (or properties) referenced herein or as to the accuracy or completeness of the information contained herein, and same is submitted subject to errors, omissions, change of price, rental or other conditions, withdrawal without notice, and to any special listing conditions imposed by the property owner(s). Any projections, opinions or estimates are subject to uncertainty and do not signify current or future property performance. All rights reserved.



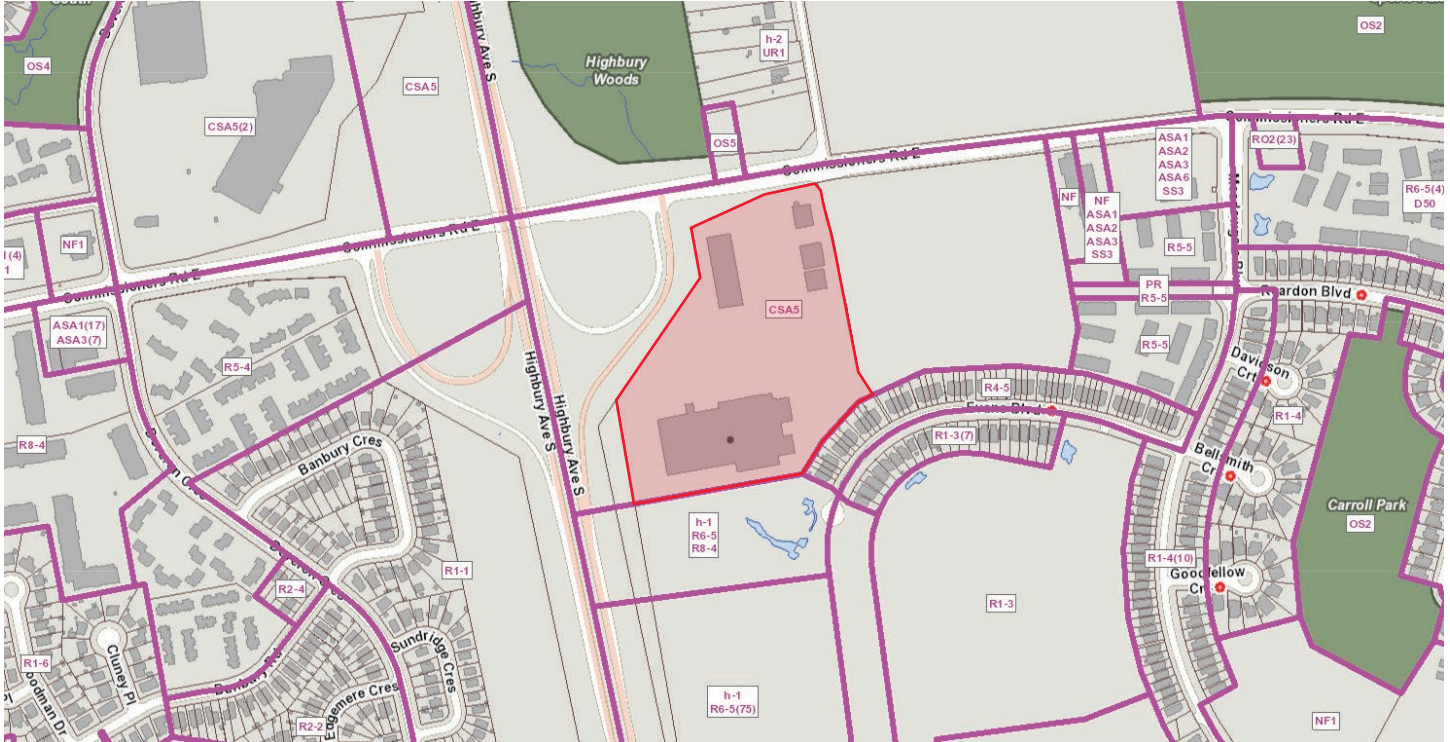
*London, ON N6M 0A8*



**CUSHMAN &  
WAKEFIELD**

## Southwestern Ontario

## ZONING: CSA5 - ASSOCIATED SHOPPING AREA



PERMITTED USES IN THE ASSOCIATED SHOPPING AREA (CSA5) ZONE INCLUDE, BUT ARE NOT LIMITED TO;

Assembly halls	Home and auto supply stores	Service and repair establishments
Automotive uses, restricted	Institutions	Studios
Bake shops	Medical/dental offices	Supermarkets
Clinics	Offices	Taverns
Commercial parking structures and/or lots	Patient testing centre laboratories	Video rental establishments
Commercial recreation establishments	Personal service establishments	Brewing on premises establishment
Day care centres	Private clubs	Cinemas
Duplicating shops	Restaurants	Commercial Schools
Financial institutions	Retail stores	Private Schools

TYLER DESJARDINE

*Sales Representative*

519 438 5403

tyler.desjardine@cushwakeswo.com

**CUSHMAN & WAKEFIELD**  
**SOUTHWESTERN ONTARIO**

850 Medway Park Dr, Suite 201

London, Ontario N6G 5C6

**www.cushwakeswo.com**

©2025 Cushman & Wakefield Southwestern Ontario, Real Estate Brokerage, Independently Owned and Operated. A Member of the Cushman & Wakefield Alliance. This information has been obtained from sources believed to be reliable but has not been verified. No warranty or representation, express or implied, is made as to the condition of the property (or properties) referenced herein or as to the accuracy or completeness of the information contained herein, and same is submitted subject to errors, omissions, change of price, rental or other conditions, withdrawal without notice, and to any special listing conditions imposed by the property owner(s). Any projections, opinions or estimates are subject to uncertainty and do not signify current or future property performance. All rights reserved.



**FOR LEASE | OFFICE/RETAIL**  
**1305-1319 COMMISSIONERS ROAD EAST**  
*London, ON N6M 0A8*



## RESIDENTIAL DEVELOPMENT IN THE AREA



**TYLER DESJARDINE**  
*Sales Representative*  
519 438 5403  
tyler.desjardine@cushwakeswo.com

**CUSHMAN & WAKEFIELD**  
**SOUTHWESTERN ONTARIO**  
850 Medway Park Dr, Suite 201  
London, Ontario N6G 5C6  
[www.cushwakeswo.com](http://www.cushwakeswo.com)