



**FOR SUBLEASE** | PRIME LIGHT INDUSTRIAL/WAREHOUSE SPACE  
Asking Rent: \$13.00 PSF Net | Additional Rent: TBD | Building Area: 6,760 SF

# 47 INDUSTRIAL PARK CRESCENT

*Sault Ste. Marie, ON P6B 5P3*



**CUSHMAN &  
WAKEFIELD**

Southwestern Ontario

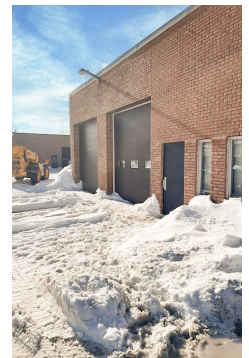
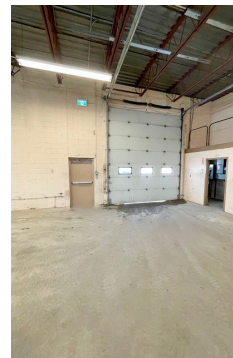
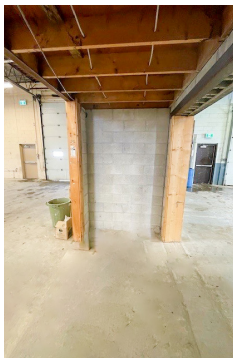
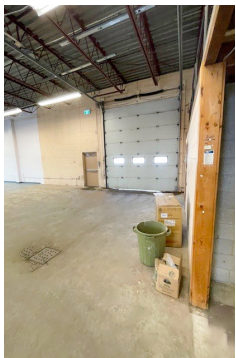
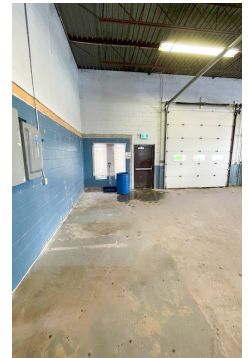
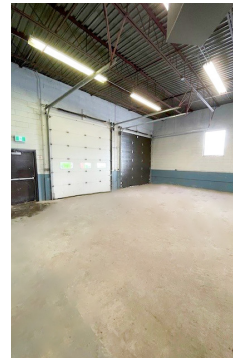
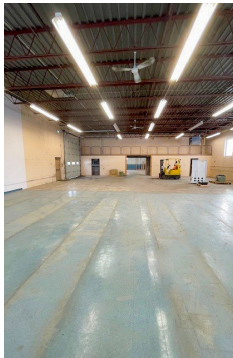
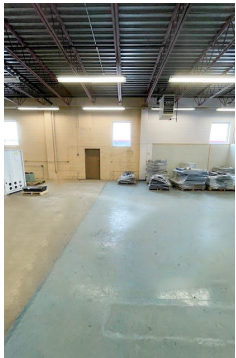
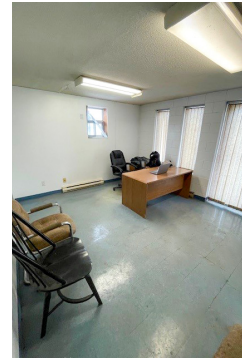


# ABOUT THE PROPERTY

Prime light industrial/warehouse space available for sublease in Sault Ste. Marie. Located directly on Industrial Park Crescent, just west of Great Northern Road.

AVAILABLE SPACE	ASKING RENT	ADDITIONAL RENT
Approx. 6,760 SF	\$13.00 PSF Net (with escalations)	TBD

- **Zoning:** M2
- **Parking:** Plenty of spaces available on-site
- **Grade Loading Doors:** 2
- **Drive in Loading Doors:** 2
- Good ceiling height
- Unit heaters
- Utilities are separately metered in the Tenant's name
- Available Immediately
- Direct exposure to Industrial Park Crescent



**TYLER DESJARDINE**  
Sales Representative  
519 438 5403  
tyler.desjardine@cushwakeswo.com

**CUSHMAN & WAKEFIELD**  
SOUTHWESTERN ONTARIO  
850 Medway Park Dr, Suite 201  
London, Ontario N6G 5C6  
[www.cushwakeswo.com](http://www.cushwakeswo.com)

 **CUSHMAN & WAKEFIELD**  
Southwestern Ontario

©2025 Cushman & Wakefield Southwestern Ontario, Real Estate Brokerage, Independently Owned and Operated. A Member of the Cushman & Wakefield Alliance. This information has been obtained from sources believed to be reliable but has not been verified. No warranty or representation, express or implied, is made as to the condition of the property (or properties) referenced herein or as to the accuracy or completeness of the information contained herein, and same is submitted subject to errors, omissions, change of price, rental or other conditions, withdrawal without notice, and to any special listing conditions imposed by the property owner(s). Any projections, opinions or estimates are subject to uncertainty and do not signify current or future property performance. All rights reserved.