

# 350 HARBOR WAY

SOUTH SAN FRANCISCO, CA

±11,200 - ±24,600 SF

OFFICE/WAREHOUSE SPACE

FOR LEASE



**Matt Squires**

+1 650 401 2136

[matt.squires@cushwake.com](mailto:matt.squires@cushwake.com)

LIC #01248804

©2023 Cushman & Wakefield. All rights reserved. The information contained in this communication is strictly confidential. This information has been obtained from sources believed to be reliable but has not been verified. NO WARRANTY OR REPRESENTATION, EXPRESS OR IMPLIED, IS MADE AS TO THE CONDITION OF THE PROPERTY (OR PROPERTIES) REFERENCED HEREIN OR AS TO THE ACCURACY OR COMPLETENESS OF THE INFORMATION CONTAINED HEREIN, AND SAME IS SUBMITTED SUBJECT TO ERRORS, OMISSIONS, CHANGE OF PRICE, RENTAL OR OTHER CONDITIONS, WITHDRAWAL WITHOUT NOTICE, AND TO ANY SPECIAL LISTING CONDITIONS IMPOSED BY THE PROPERTY OWNER(S). ANY PROJECTIONS, OPINIONS OR ESTIMATES ARE SUBJECT TO UNCERTAINTY AND DO NOT SIGNIFY CURRENT OR FUTURE PROPERTY PERFORMANCE.



# 350 HARBOR WAY

SOUTH SAN FRANCISCO, CA

## PROPERTY HIGHLIGHTS

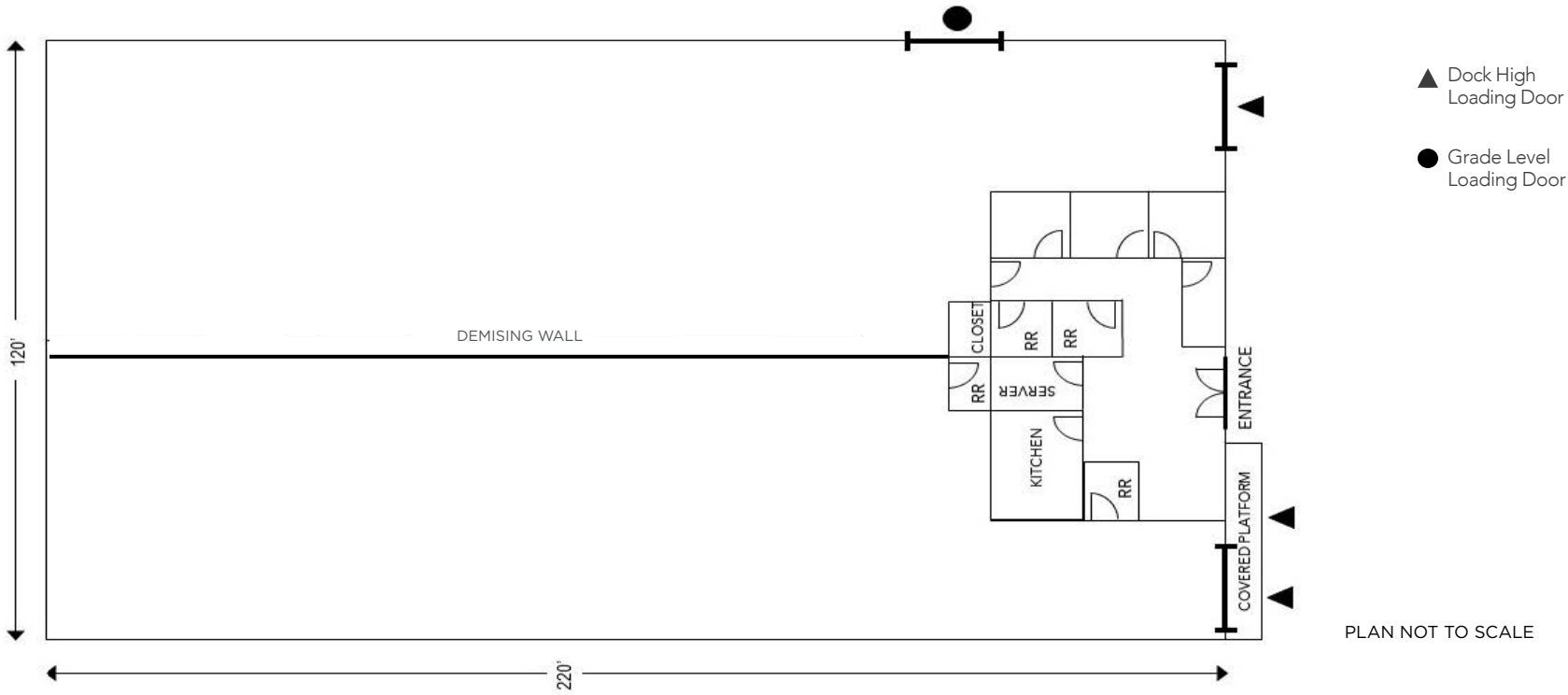
- ±11,200 - ±24,600 SF Total
- ±3,500 SF Office
- 3 Dock-Hi Loading Doors
- 1 Grade-Level Door
- 18' - 19' Clear Height
- 20' X 60' Column Spacing
- 225 AMPS 120/240V Single Phase 3W Power (To Be Verified by Tenant's Electrician)
- Sprinklered
- ±15,000 SF of Secure Yard Space
- Available May 1, 2025

# 350 HARBOR WAY

SOUTH SAN FRANCISCO, CA

## FLOOR PLAN

### 350 HARBOR WAY



# 350 HARBOR WAY

DALY CITY  
SOUTH SAN FRANCISCO, CA



350 HARBOR WAY



- ==== - CALTRAIN ROUTE
- (C) - CALTRAIN STATION



- ==== - BART ROUTE
- (b) - BART STATION





# 350 HARBOR WAY

SOUTH SAN FRANCISCO, CA

**Matt Squires**

+1 650 401 2136

[matt.squires@cushwake.com](mailto:matt.squires@cushwake.com)

LIC #01248804

©2023 Cushman & Wakefield. All rights reserved. The information contained in this communication is strictly confidential. This information has been obtained from sources believed to be reliable but has not been verified. NO WARRANTY OR REPRESENTATION, EXPRESS OR IMPLIED, IS MADE AS TO THE CONDITION OF THE PROPERTY (OR PROPERTIES) REFERENCED HEREIN OR AS TO THE ACCURACY OR COMPLETENESS OF THE INFORMATION CONTAINED HEREIN, AND SAME IS SUBMITTED SUBJECT TO ERRORS, OMISSIONS, CHANGE OF PRICE, RENTAL OR OTHER CONDITIONS, WITHDRAWAL WITHOUT NOTICE, AND TO ANY SPECIAL LISTING CONDITIONS IMPOSED BY THE PROPERTY OWNER(S). ANY PROJECTIONS, OPINIONS OR ESTIMATES ARE SUBJECT TO UNCERTAINTY AND DO NOT SIGNIFY CURRENT OR FUTURE PROPERTY PERFORMANCE.