



FOR SUBLEASE
7150 WINTON DRIVE
Indianapolis, IN 46268

+25,132 SF AVAILABLE



CONTACT US:

RYAN E. BAKER, SIOR, CCIM

Executive Director
Direct +1 317 352 5428
Mobile + 317 979 7182
ryan.baker@cushwake.com

GERRY "SPUD" DICK

Executive Director
+1 317 639 0477
+1 317 514 7858
spud.dick@cushwake.com



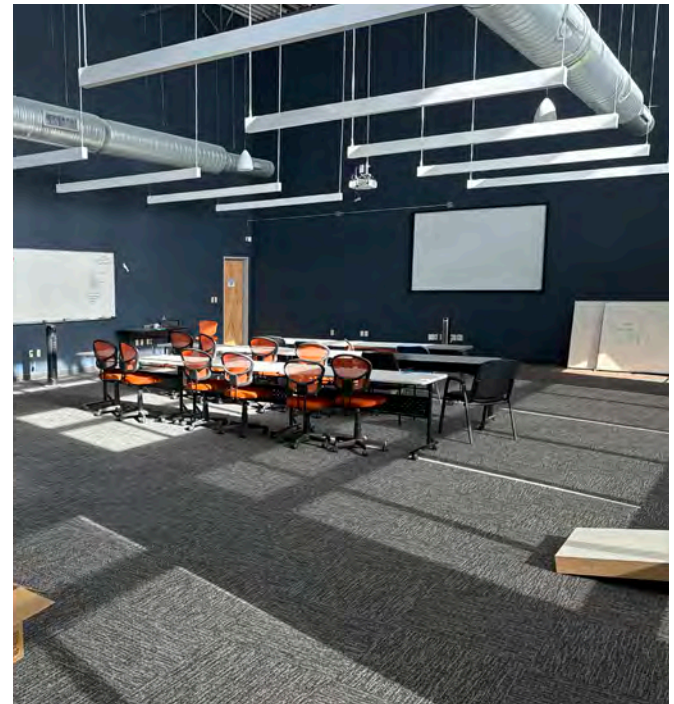
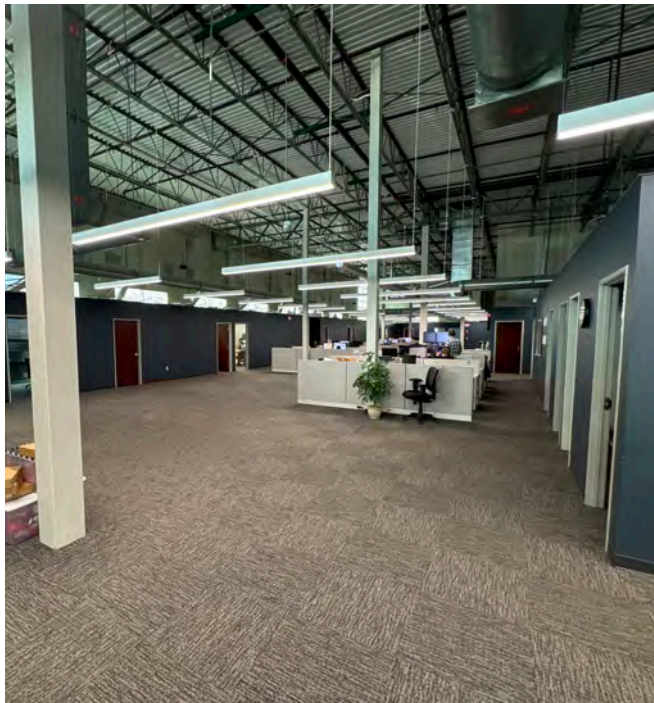


PROPERTY DETAILS

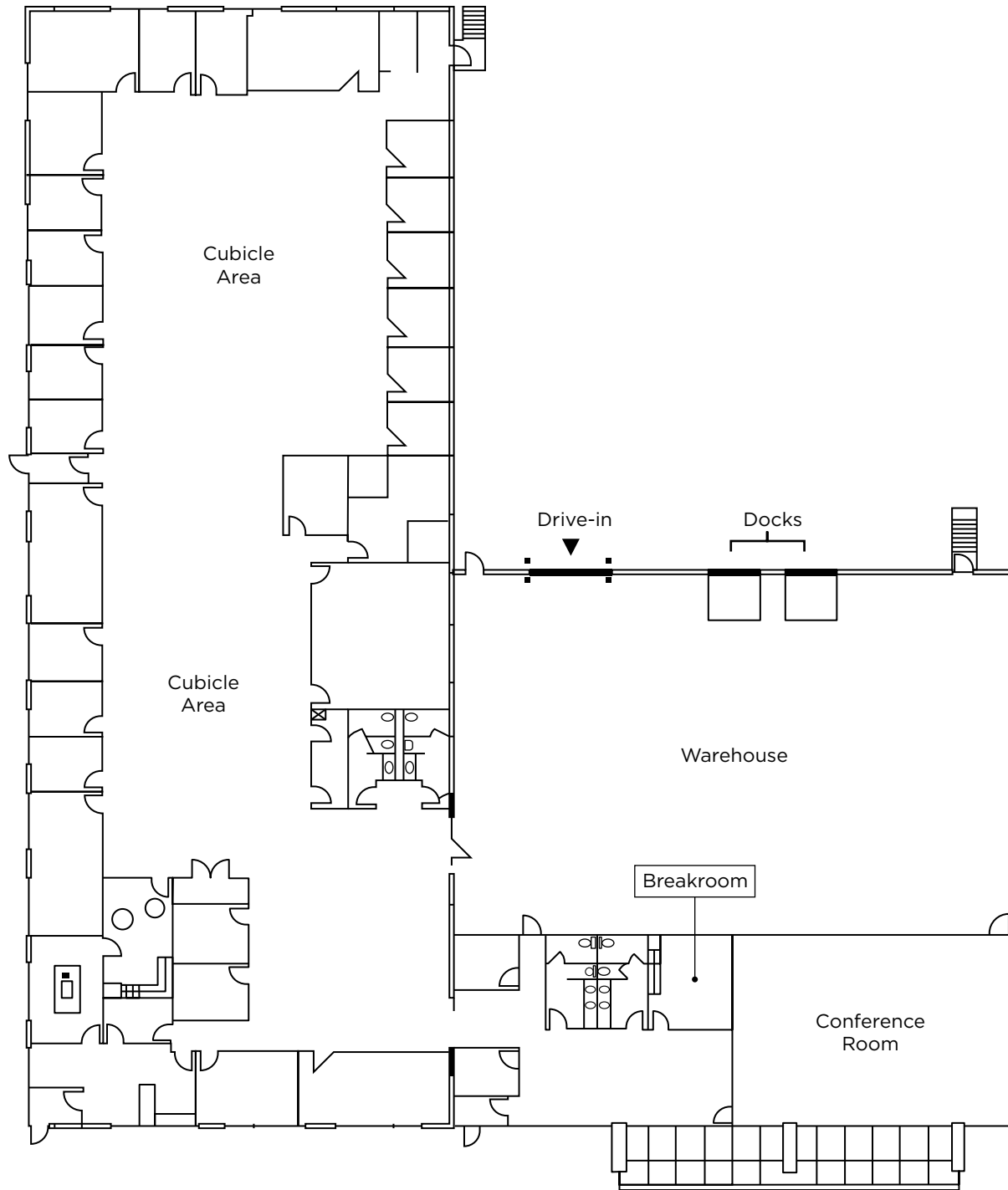
Total SF Available:	+25,132
Site Area:	+6,336 warehouse with the remaining being open office space, individual offices, and conference rooms
Docks:	Two (2)
Drive-In Door:	One (1) 14x14
Clear Height:	24'
Sprinkler:	Yes
Warehouse A/C:	Yes
Zoning:	CS
Sublease Term:	Through August 31, 2026
Asking Rates:	\$15.02/SF NNN through 3/31/2026 \$15.32/SF NNN 3/31/2026 - 8/31/2026
OPEX:	\$2.79/SF



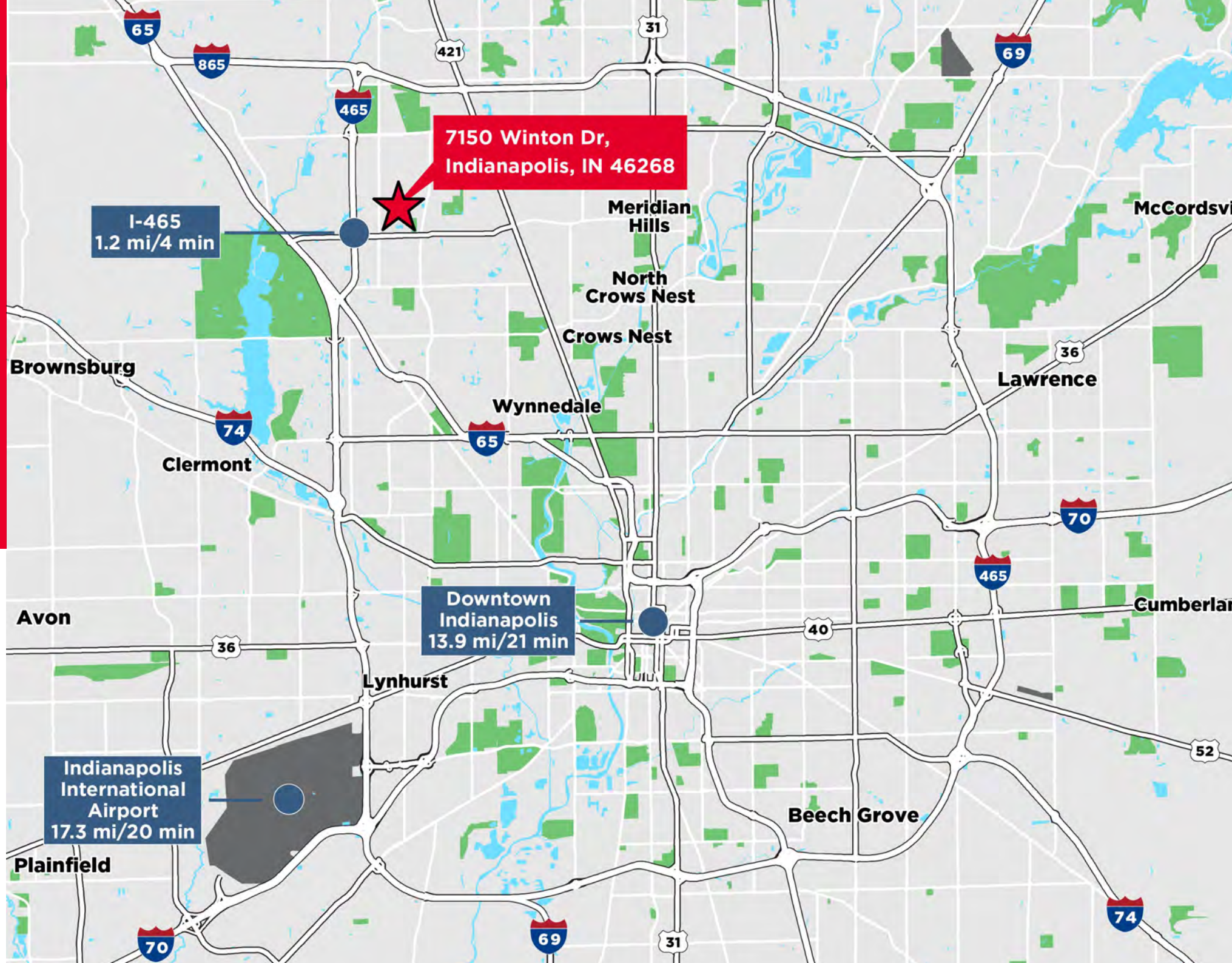
7150 WINTON DIVE



7150 WINTON DRIVE



7150 WINTON DRIVE





CONTACT INFORMATION

RYAN E. BAKER, SIOR, CCIM

Executive Director
Direct +1 317 352 5428
Mobile +1 317 979 7182
ryan.baker@cushwake.com

GERRY "SPUD" DICK

Executive Director
Direct +1 317 639 0477
Mobile +1 317 514 7858
spud.dick@cushwake.com

©2025 Cushman & Wakefield. All rights reserved. The information contained in this communication is strictly confidential. This information has been obtained from sources believed to be reliable but has not been verified. NO WARRANTY OR REPRESENTATION, EXPRESS OR IMPLIED, IS MADE AS TO THE CONDITION OF THE PROPERTY (OR PROPERTIES) REFERENCED HEREIN OR AS TO THE ACCURACY OR COMPLETENESS OF THE INFORMATION CONTAINED HEREIN, AND SAME IS SUBMITTED SUBJECT TO ERRORS, OMISSIONS, CHANGE OF PRICE, RENTAL OR OTHER CONDITIONS, WITHDRAWAL WITHOUT NOTICE, AND TO ANY SPECIAL LISTING CONDITIONS IMPOSED BY THE PROPERTY OWNER(S). ANY PROJECTIONS, OPINIONS OR ESTIMATES ARE SUBJECT TO UNCERTAINTY AND DO NOT SIGNIFY CURRENT OR FUTURE PROPERTY PERFORMANCE.