

SANTA FE BUSINESS CENTER

175 Bosstick Blvd & 2910, 2920, & 2930 Norman Strasse Rd
San Marcos, CA 92069



FOR LEASE
INDUSTRIAL BUSINESS PARK



PROPERTY HIGHLIGHTS



SANTA FE BUSINESS CENTER



Four Industrial
Manufacturing Buildings



Minimal Office Build out with
Restrooms in Each Suite



Grade Level Roll-Up
Loading Doors



Parking Ratio
2.0 / 1,000 SF



Convenient Access to
Highway 78



Built in 1990



Zoning IP; San Marcos



Available Suite Size
1,176 SF

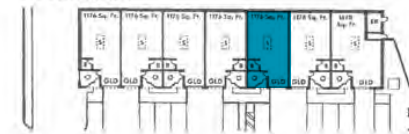
AVAILABILITIES

CURRENT AVAILABILITIES

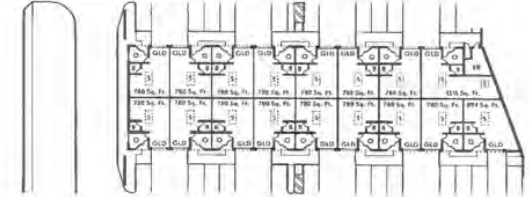
UNIT	SIZE	DESCRIPTION	LEASE RATE	AVAILABLE
175 Bosstick Blvd / 105	1,176 SF	Reception, restroom, and warehouse	\$1.60 / SF + \$0.20 CAM	Now



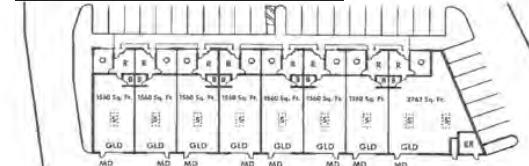
175 Bosstick Blvd



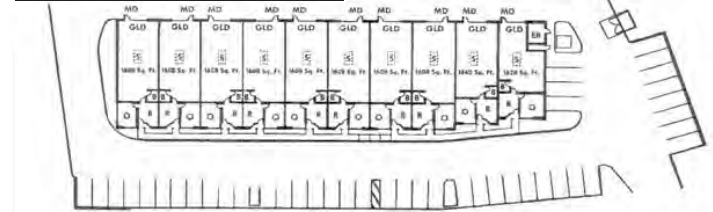
2930 Norman Strasse Rd



2920 Norman Strasse Rd



2910 Norman Strasse Rd



175 BOSSTICK BLVD

105

SUITES AVAILABLE

1,176

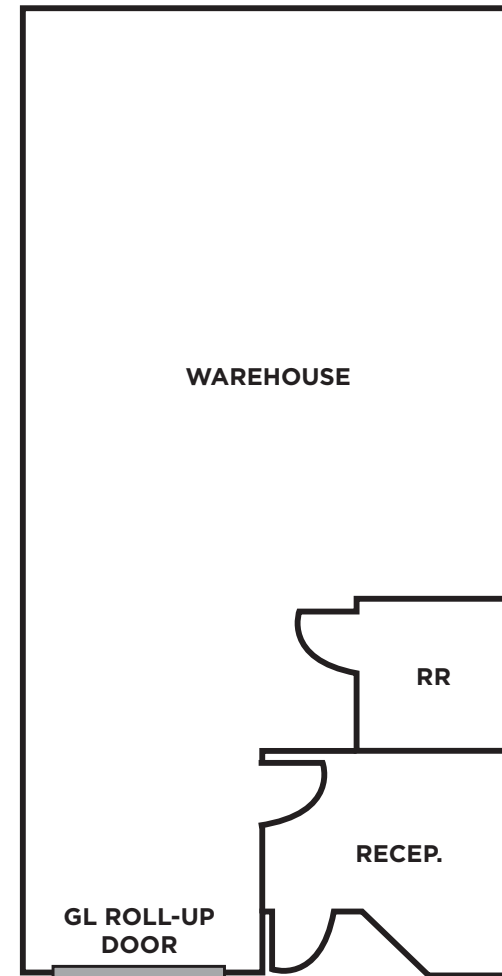
TOTAL SQUARE FEET

\$1.60 / SF

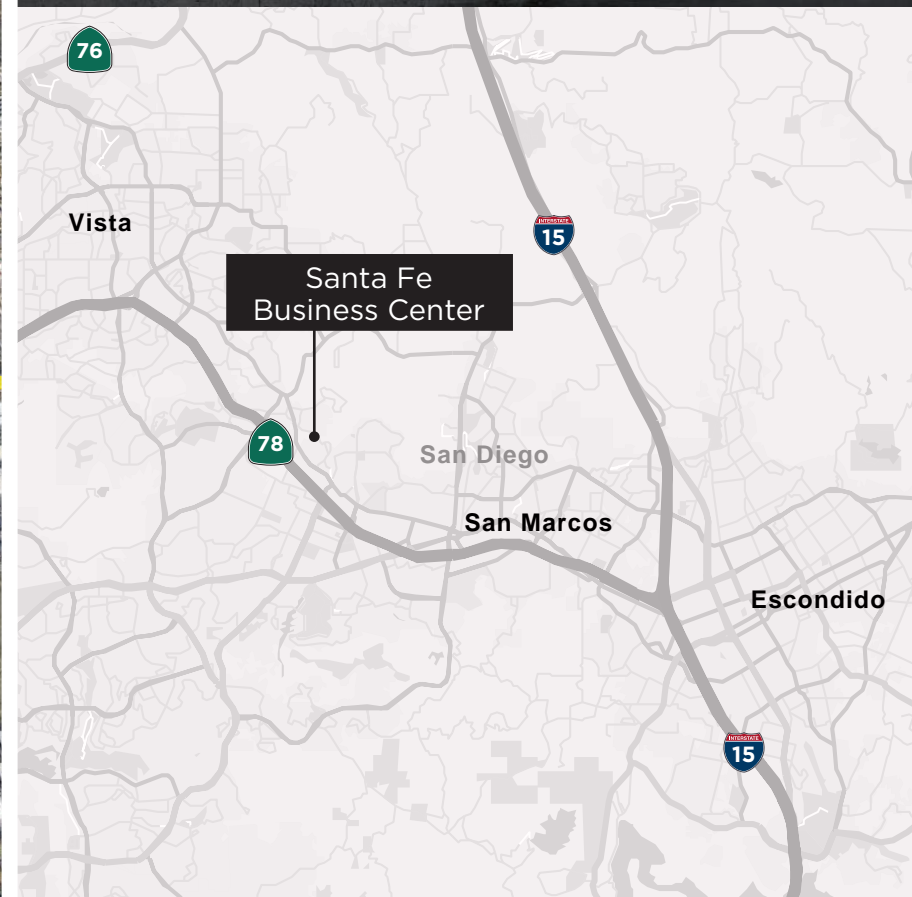
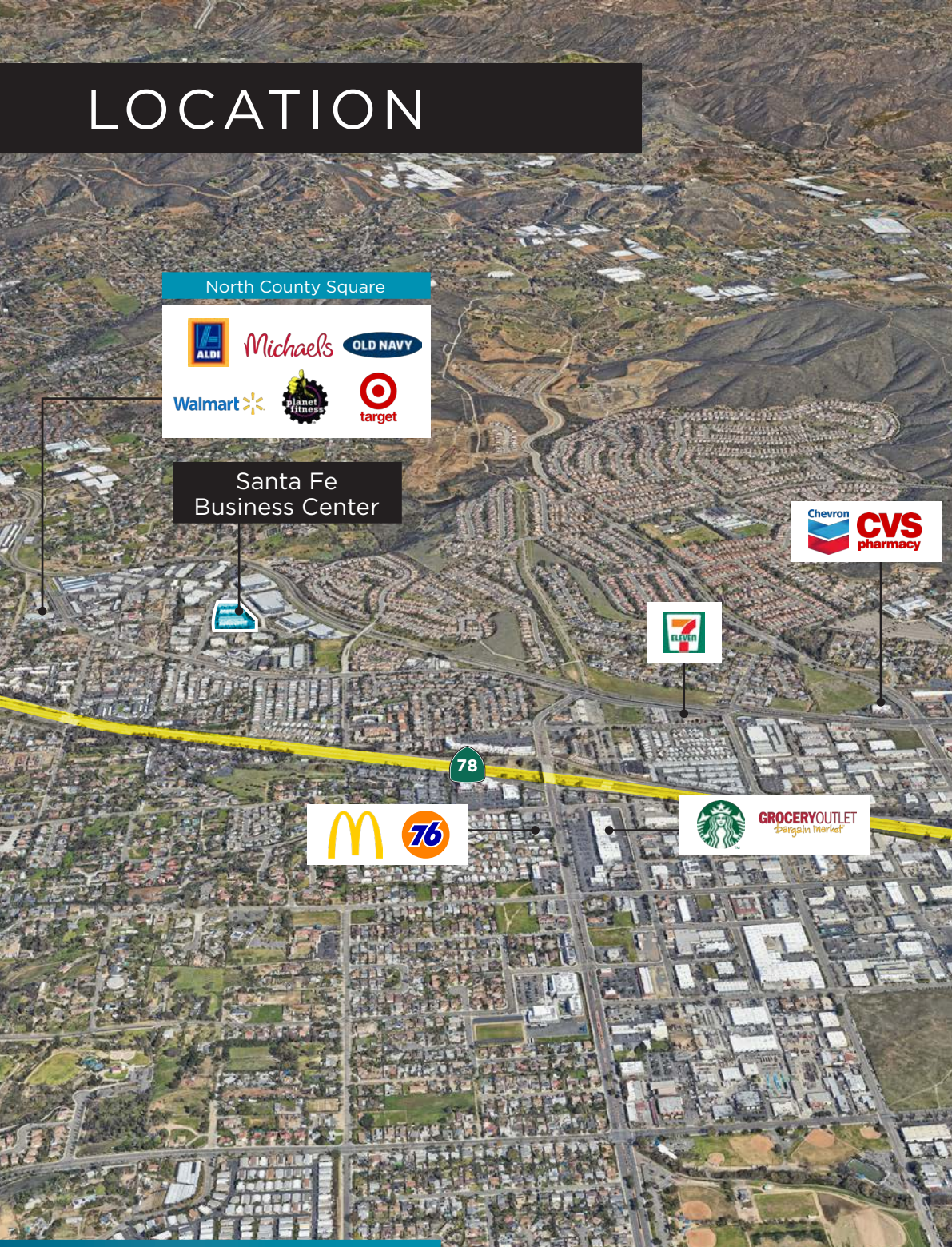
LEASE RATE + \$0.20 CAM

Now

DATE AVAILABLE



LOCATION



**JOE CROTTY**

760.473.1811

joe.crotty@cushwake.com
Lic. No.01369821**CONOR BOYLE**

760.458.5739

conor.boyle@cushwake.com
Lic. No.01813305**TYLER STEMLEY**

760.908.4270

tyler.stemley@cushwake.com
Lic. No.02003867**CARSON ODABASHIAN**

760.431.3836

carson.odabashian@cushwake.com
Lic. No.02207230