

4,850 SF Industrial Facility with 2.5 AC Outdoor Storage

For Lease | 5502 E Schaaf Road, Independence, Ohio 44131





PROPERTY HIGHLIGHTS

- Centrally located industrial property with excellent access to I-77 and I-480
- The property features a fully fenced in yard with 2.5 acres of outside parking and storage area
- Perfect shop space for your growing business featuring a 14'x14' drive-in and a 1-ton overhead crane
- Flexible zoning code allows for a variety of uses
- Minutes from the Rockside Corridor and Valley View which host multiple dining, lodging, and service amenities

LEASE RATE

\$7,500/Month Gross

Building Specifications

Total Building Size: 4,850 SF

Year Built: 1959

Renovated: 2023

Construction: Masonry

Lighting: Fluorescent

Clear Height 14'

Drive-in Doors: One (1) 14'x14'

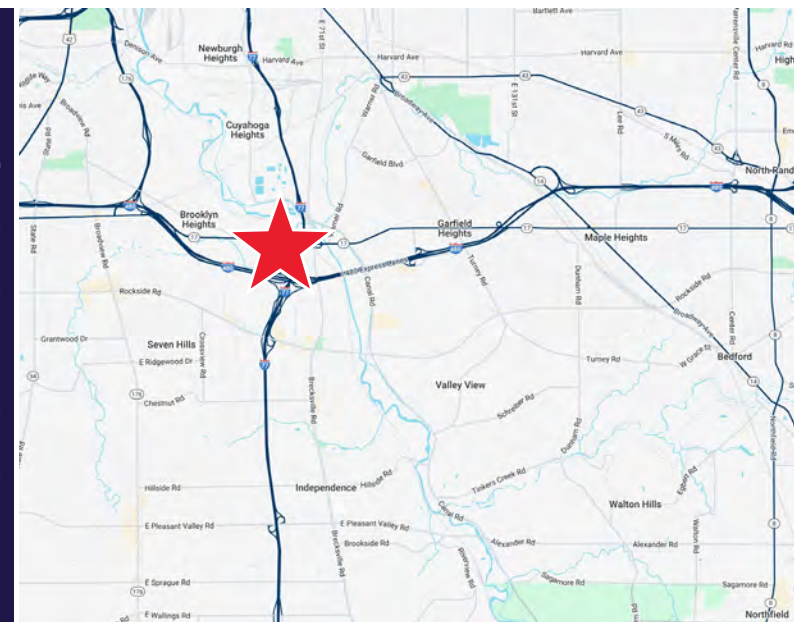
Docks: One (1) Exterior

Heat: Overhead Gas Unit

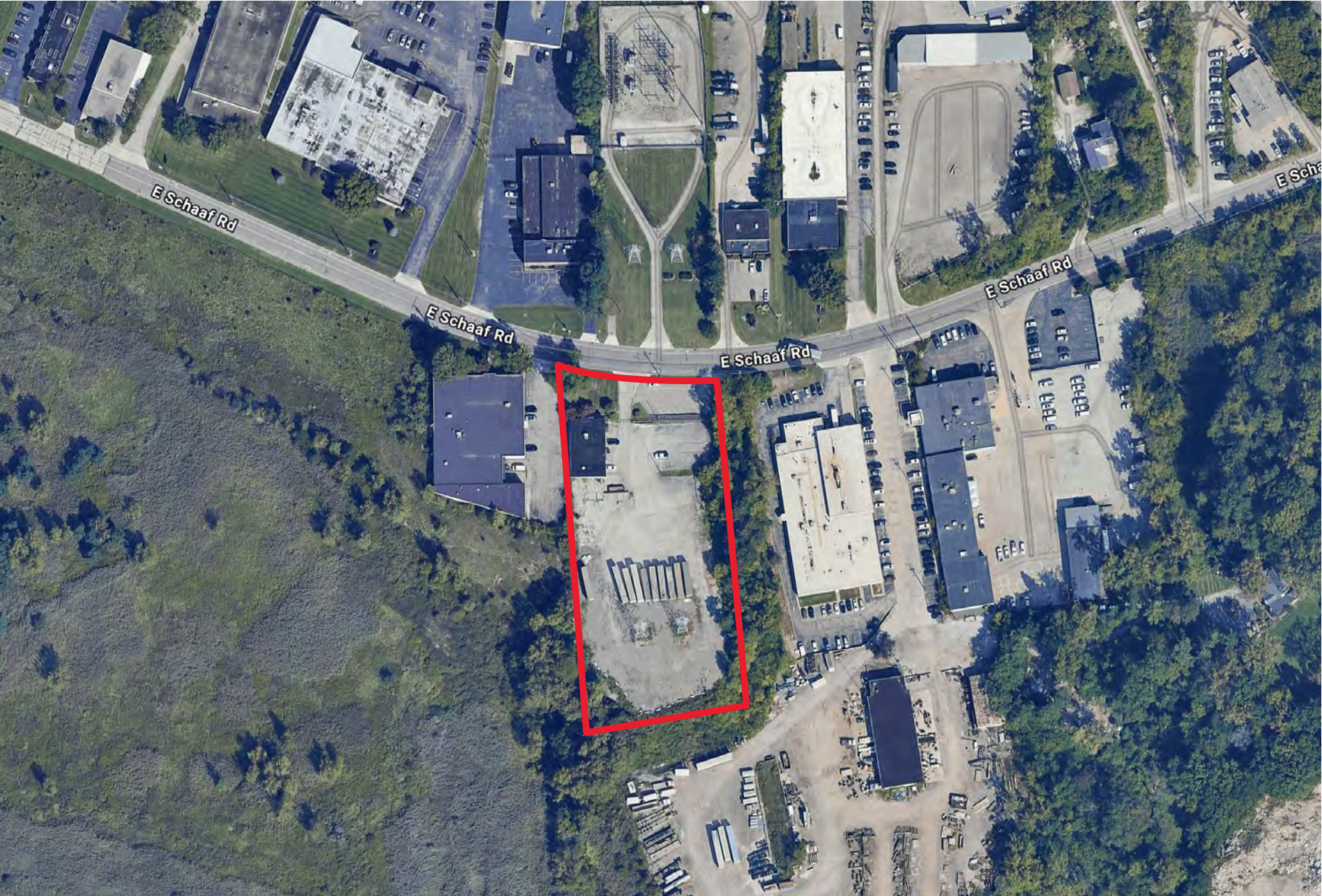
A/C: Office

Parking: Ample

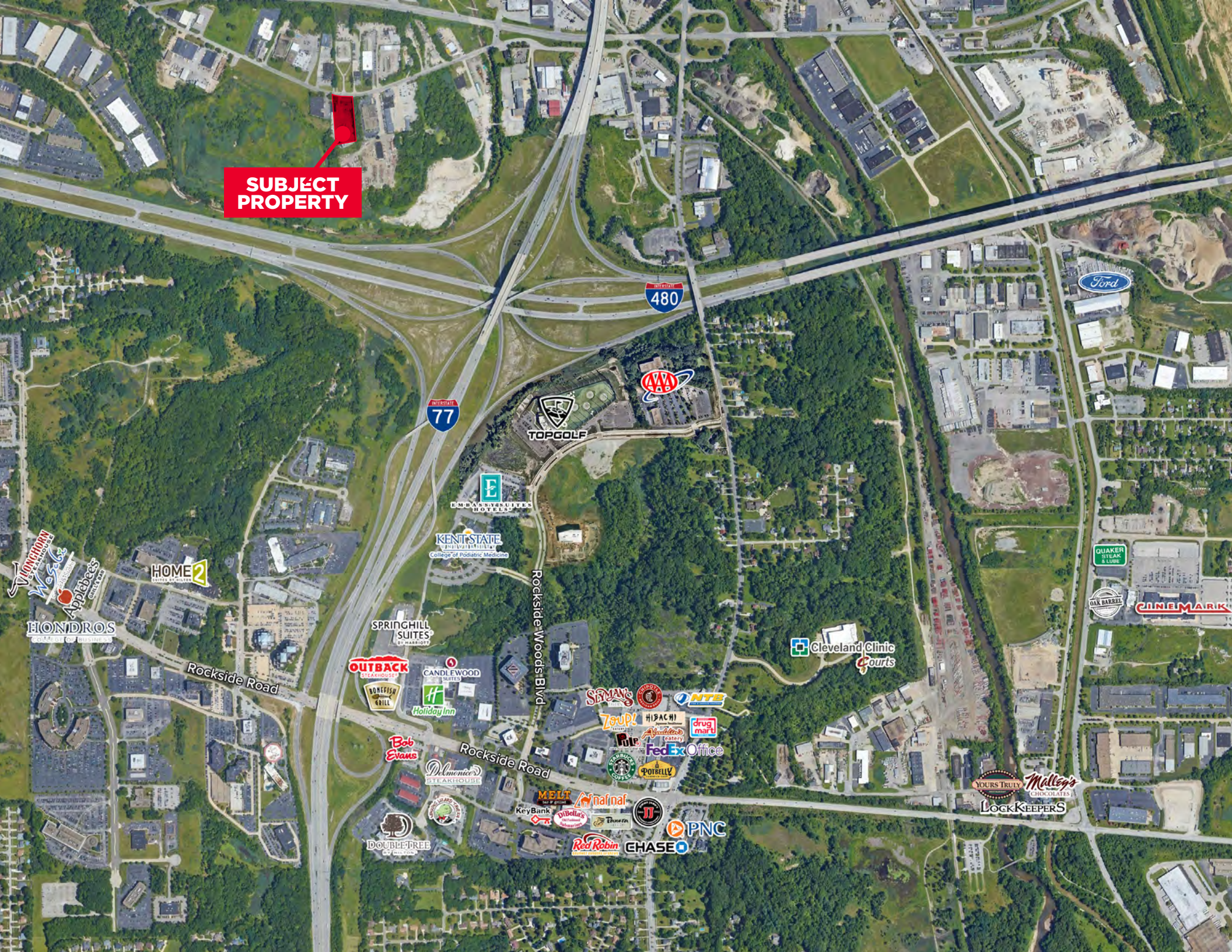
Zoning: U-6 Commercial or Industrial



Parcel Map



**SUBJECT
PROPERTY**





**5502 E SCHAAF ROAD
INDEPENDENCE, OHIO 44131**

CONOR COAKLEY
Senior Vice President
+1 216 232 4102
ccoakley@crescorealestate.com

COLE SORENSON
Associate
+1 216 525 1470
csorenson@crescorealestate.com



Cushman & Wakefield | CRESCO Real Estate
6100 Rockside Woods Blvd, Suite 200
Cleveland, Ohio 44131

crescorealestate.com

©2025 Cushman & Wakefield. All rights reserved. The information contained in this communication is strictly confidential. This information has been obtained from sources believed to be reliable but has not been verified. NO WARRANTY OR REPRESENTATION, EXPRESS OR IMPLIED, IS MADE AS TO THE CONDITION OF THE PROPERTY (OR PROPERTIES) REFERENCED HEREIN OR AS TO THE ACCURACY OR COMPLETENESS OF THE INFORMATION CONTAINED HEREIN, AND SAME IS SUBMITTED SUBJECT TO ERRORS, OMISSIONS, CHANGE OF PRICE, RENTAL OR OTHER CONDITIONS, WITHDRAWAL, WITHOUT NOTICE, AND TO ANY SPECIAL LISTING CONDITIONS IMPOSED BY THE PROPERTY OWNER(S). ANY PROJECTIONS, OPINIONS OR ESTIMATES ARE SUBJECT TO UNCERTAINTY AND DO NOT SIGNIFY CURRENT OR FUTURE PROPERTY PERFORMANCE.