



# 10,702 SF

**PREMIUM PLUG N' PLAY OFFICE OPPORTUNITY**  
SUBLEASE OR DIRECT



**7025 LANGER DR**  
MISSISSAUGA, ON

CUSHMAN & WAKEFIELD

OFFICE



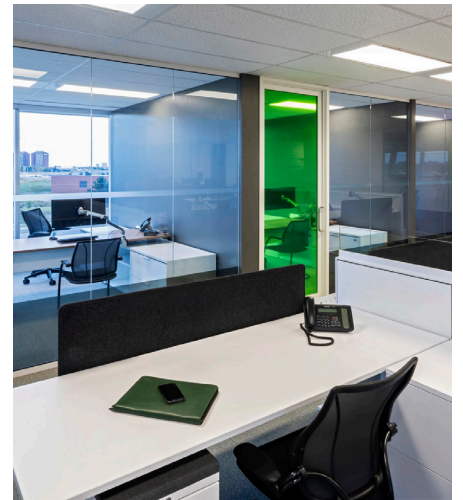
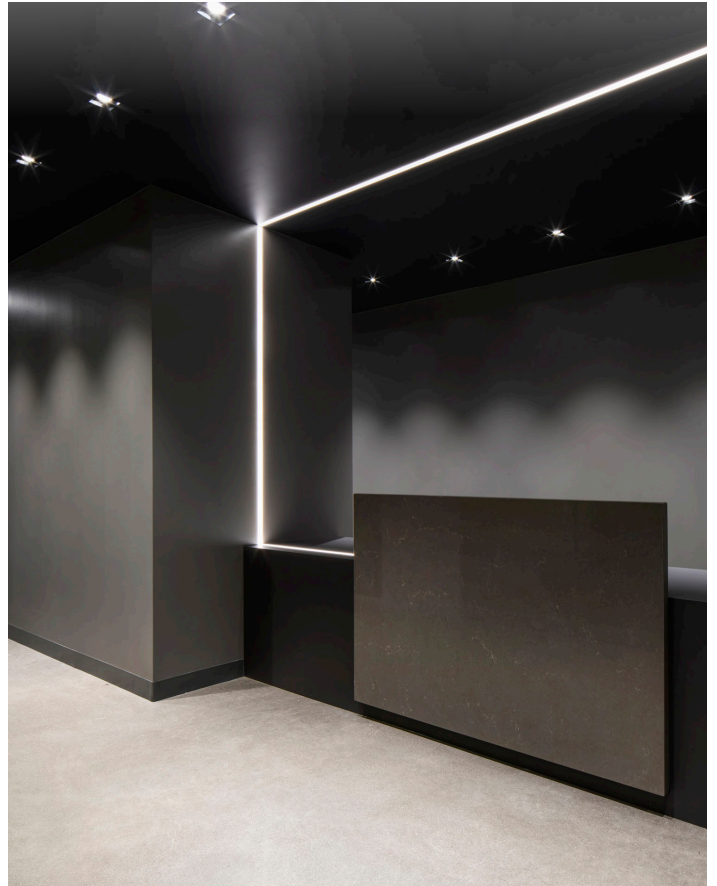
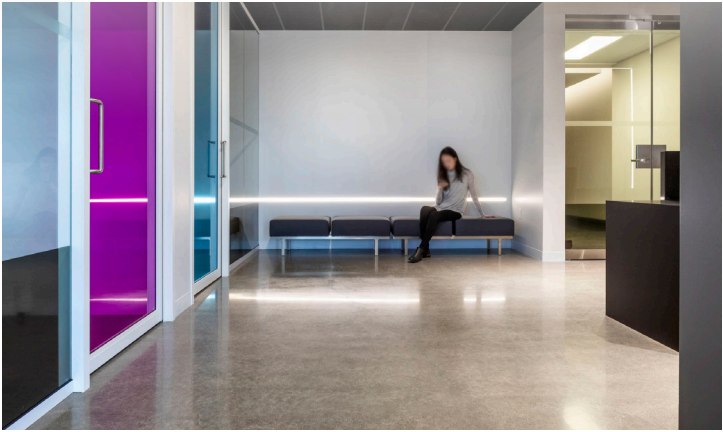


## PROPERTY DETAILS

TYPE	Sublease
LOCATION	7025 Langer Dr., #301, Mississauga, ON L5N 0E8
TOTAL SF	10,702 SF
TERM	Until August 31, 2028
PARKING RATIO	4/1,000 SF
GROSS RENT	Contact broker for more information
AVAILABILITY	Flexible

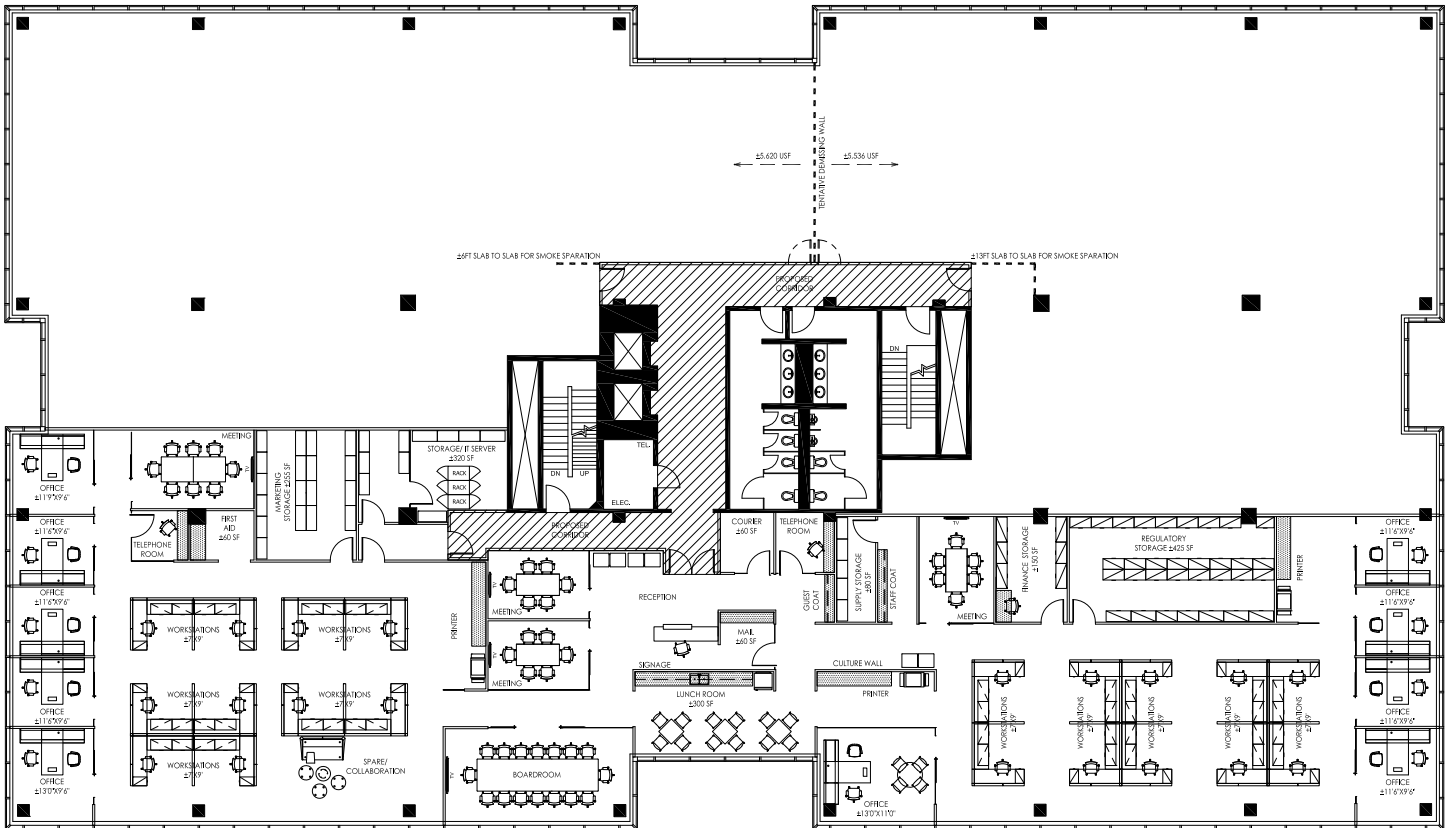


# PHOTO GALLERY



# FLOOR PLAN

Suite 300 - 10,702 SF



USABLE AREA: 9,252 SF  
RENTABLE AREA: 10,702 SF





**For more information, please contact:**

**Craig Trenholm\*\***

Senior Vice President

+1 905 501 6483

[craig.trenholm@ca.cushwake.com](mailto:craig.trenholm@ca.cushwake.com)

**Fay Goveas\*\***

Vice President

+1 905 501 6482

[fay.goveas@ca.cushwake.com](mailto:fay.goveas@ca.cushwake.com)

**Ky Vladymyrenko\***

Client Coordinator

+1 905 501 6416

[ky.vladymyrenko@cushwake.com](mailto:ky.vladymyrenko@cushwake.com)

BROKER \*\* SALES REPRESENTATIVE\*



**CUSHMAN &  
WAKEFIELD**

©2025 CUSHMAN & WAKEFIELD. ALL RIGHTS RESERVED. THE INFORMATION CONTAINED IN THIS COMMUNICATION IS STRICTLY CONFIDENTIAL. THIS INFORMATION HAS BEEN OBTAINED FROM SOURCES BELIEVED TO BE RELIABLE BUT HAS NOT BEEN VERIFIED. NO WARRANTY OR REPRESENTATION, EXPRESS OR IMPLIED, IS MADE AS TO THE CONDITION OF THE PROPERTY (OR PROPERTIES) REFERENCED HEREIN OR AS TO THE ACCURACY OR COMPLETENESS OF THE INFORMATION CONTAINED HEREIN, AND SAME IS SUBMITTED SUBJECT TO ERRORS, OMISSIONS, CHANGE OF PRICE, RENTAL OR OTHER CONDITIONS, WITHDRAWAL WITHOUT NOTICE, AND TO ANY SPECIAL LISTING CONDITIONS IMPOSED BY THE PROPERTY OWNER(S). ANY PROJECTIONS, OPINIONS OR ESTIMATES ARE SUBJECT TO UNCERTAINTY AND DO NOT SIGNIFY CURRENT OR FUTURE PROPERTY PERFORMANCE.

\*\* BROKER, \*SALES REPRESENTATIVE