

# 2495

Boulevard of the Generals  
NORRISTOWN, PENNSYLVANIA

**AVAILABLE  
FOR LEASE**



Suite 800

# ±6,669<sub>SF</sub>



**Christopher Butera**  
Director  
215 963 4011  
chris.butera@cushwake.com

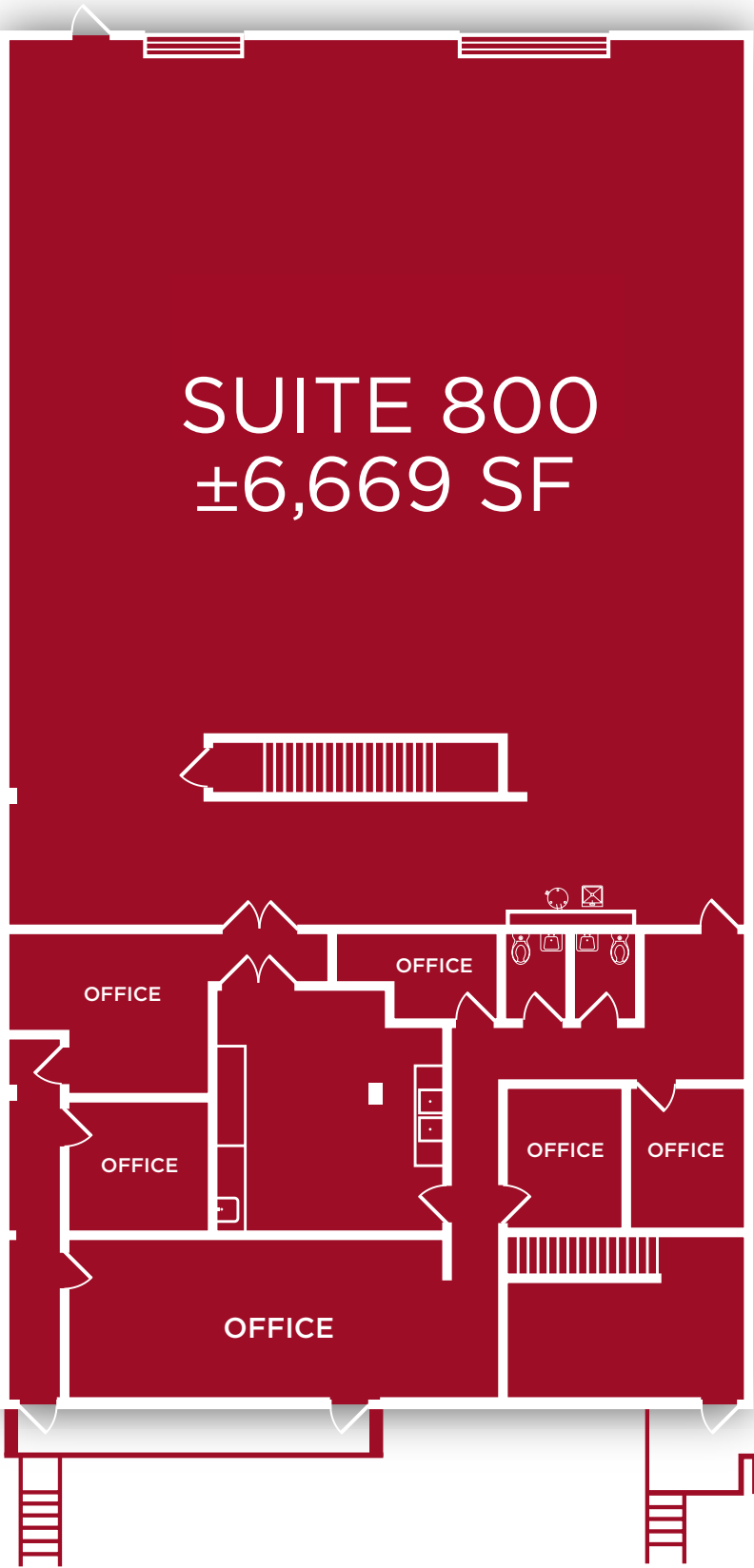
**Jonas Skovdal**  
Executive Managing Director  
610 772 2005  
jonas.skovdal@cushwake.com





# LOCAL ACCESS





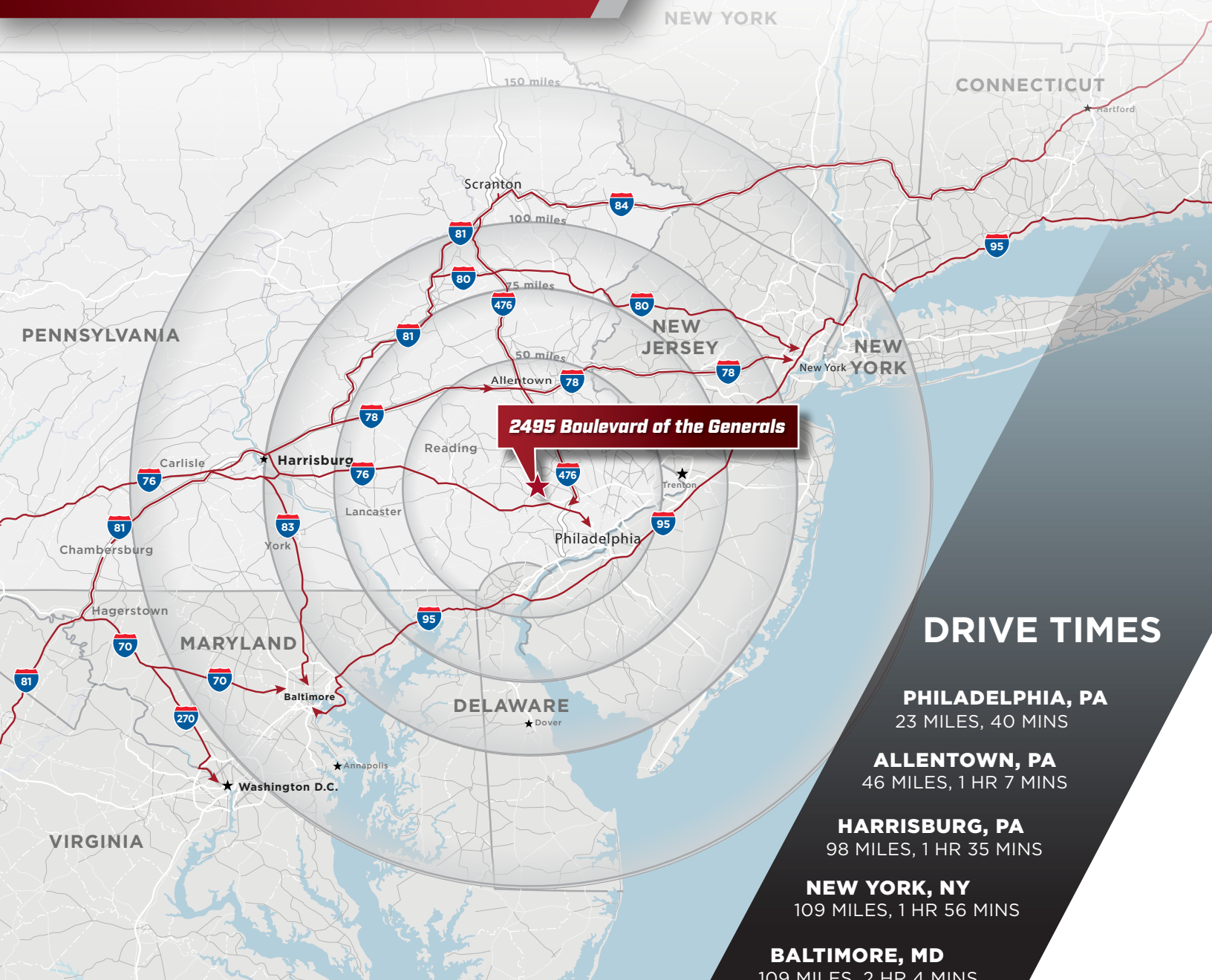
SUITE 800  
±6,669 SF

Total Building SF	±65,273 SF
Available SF	±6,669 SF
Office	2,180 SF (2-Story)
Loading:	±1 Loading Dock ±1 Drive-in Door
Clear Height	18'
Lighting	T-5 and T-12
Power	400 amps
Fire Protection	Wet System



# REGIONAL MAP

FOR LEASE



2495 Boulevard of the Generals

## DRIVE TIMES

**PHILADELPHIA, PA**  
23 MILES, 40 MINS

**ALLENTOWN, PA**  
46 MILES, 1 HR 7 MINS

**HARRISBURG, PA**  
98 MILES, 1 HR 35 MINS

**NEW YORK, NY**  
109 MILES, 1 HR 56 MINS

**BALTIMORE, MD**  
109 MILES, 2 HR 4 MINS

**WASHINGTON, D.C.**  
147 MILES, 2 HR 58 MINS

**BOSTON, MA**  
332 MILES, 5 HR 46 MINS

Cushman & Wakefield of Pennsylvania, LLC.  
1650 Market Street, 48th Floor | Philadelphia, PA 19103  
+1 215 963 4000

[cushmanwakefield.com](http://cushmanwakefield.com)

For More Information, Please Contact:

**Chris Butera**  
Director  
+1 610 909 4684  
[chris.butera@cushwake.com](mailto:chris.butera@cushwake.com)

**Jonas Skovdal**  
Executive Managing Director  
+1 267 939 1887  
[jonas.skovdal@cushwake.com](mailto:jonas.skovdal@cushwake.com)

Cushman & Wakefield of Pennsylvania, LLC is the Owner's exclusive agent for the property.

Cushman & Wakefield Copyright 2024. No warranty or representation, express or implied, is made to the accuracy or completeness of the information contained herein, and same is submitted subject to errors, omissions, change of price, rental or other conditions, withdrawal without notice, and to any special listing conditions imposed by the property owner(s). As applicable, we make no representation as to the condition of the property (or properties) in question.

  
**Endurance**<sup>TM</sup>  
Real Estate Group, LLC

 **CUSHMAN & WAKEFIELD**