



WOLFE
S Q U A R E

10050 / 10080 NORTH WOLFE ROAD | TOTAL ±118,729 SF



CUSHMAN &
WAKEFIELD

J.P.Morgan

AVAILABILITIES

APRIL 2025 EDITION

CURRENT AVAILABILITIES (<3 MONTHS)

SUITE	AVAILABLE	SIZE	SUITE NOTES
10050-S160	07/25	±2,879 SF	
10050-S272	NOW	±5,126 SF	LEASE PENDING
10080-S280	NOW	±5,280 SF	LEASE PENDING
10080-S190	NOW	±8,842 SF	PLUG-&-PLAY



REQUEST FLOOR PLANS

CLICK TO EMAIL REQUIREMENT DETAILS AND
RECEIVE MATCHING FLOOR PLANS



FOR MORE INFORMATION CONTACT:

BOB SIMPSON
408.406.4334
bob.simpson@cushwake.com
Lic. 01240540

ERIK HALLGRIMSON
408.615.3435
erik.hallgrimson@cushwake.com
Lic. 01274540

RESOURCES

WOLFE SQUARE, CUPERTINO

RESOURCES DOWNLOADS



AVAILABILITY UPDATE



PROJECT HIGHLIGHTS



AREA HIGHLIGHTS



AMENITIES MAP



HI-RESOLUTION PHOTOS (ZIP FILE)

RESOURCES LINKS



VIRTUAL SLIDESHOW



GOOGLE MAP / AERIAL



HOTEL BOOKING



VTA SCHEDULE



MAIN STREET WEBSITE



CITY OF CUPERTINO WEBSITE



NEED MORE INFORMATION?

SCAN OR CLICK THIS QR CODE TO
ACCESS THE PROPERTY RESOURCES



HIGHLIGHTS

WOLFE SQUARE, CUPERTINO



HIGH-IMAGE

TWO CLASS "A" OFFICE BUILDINGS
TOTALING 118,729 SF



IDENTITY

PROMINENT CUPERTINO LOCATION
WITH EXCELLENT IDENTITY



MODERN UPGRADES

NEWLY IMPROVED INTERIORS WITH
CONTEMPORARY FINISHES



COLLABORATION

ENERGIZED OUTDOOR COLLABORATION
AREAS WITH PRIVATE ATMOSPHERE



PROXIMITY

EXCELLENT PROXIMITY TO NEW
CUPERTINO APPLE CAMPUS



ON-SITE PARKING

3.3/1,000 PARKING RATIO WITH VALET AND
DEDICATED PARKING GARAGES



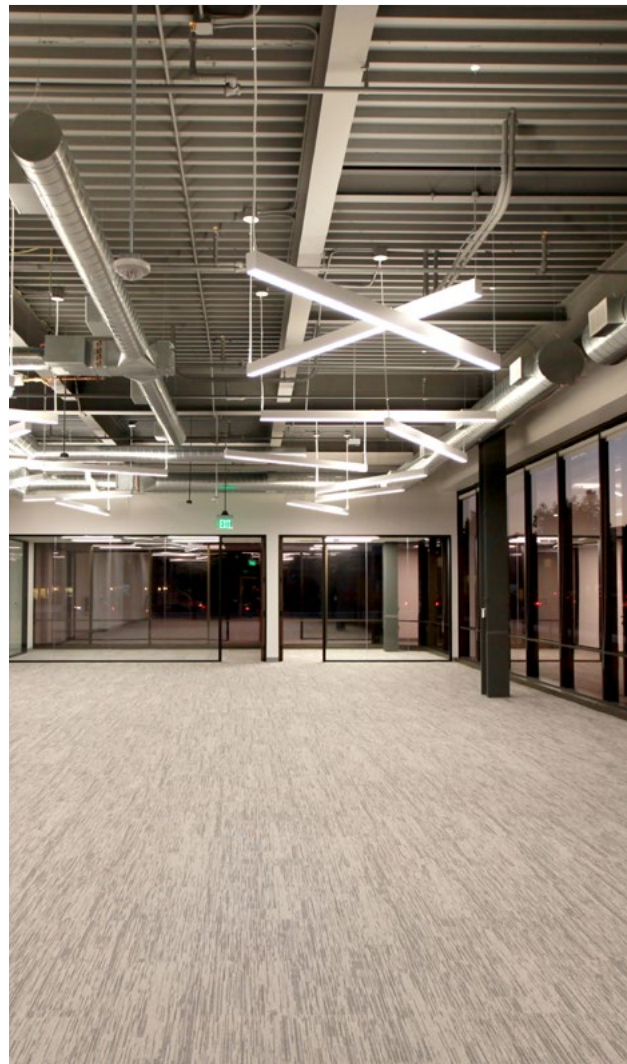
SECURITY

BUILDING CARD-KEY ACCESS AND
ONSITE PROPERTY MANAGEMENT



NEED MORE INFORMATION?

SCAN OR CLICK THIS QR CODE TO
OBTAIN THE RESOURCES PAGE



AREA HIGHLIGHTS

WITHIN FIVE MINUTES



72+

RESTAURANTS & EATERIES



17+

CAFES



6+

HOTELS



18+

RESIDENTIAL PROJECTS



9+

POINTS OF INTEREST



3+

ARTS & ENTERTAINMENT



16+

FITNESS CENTERS



8+

BARS & SOCIAL VENUES



AMENITIES MAP

WITHIN WALKING DISTANCE



11+

FINE DINING



24+

CASUAL DINING



5+

CAFES



3+

HOTELS



3+

APARTMENT PROJECTS



5+

PARKING GARAGES

