



3.27 ACRES

Land at Allison Pointe
8560 Allison Pointe Blvd
Indianapolis, IN 46250

PROPERTY HIGHLIGHTS

3.27 Acre Land Parcel

Lakefront property with I-465
Visibility

Zoned CS



MATT KITE

Director

+1 317 616 3981

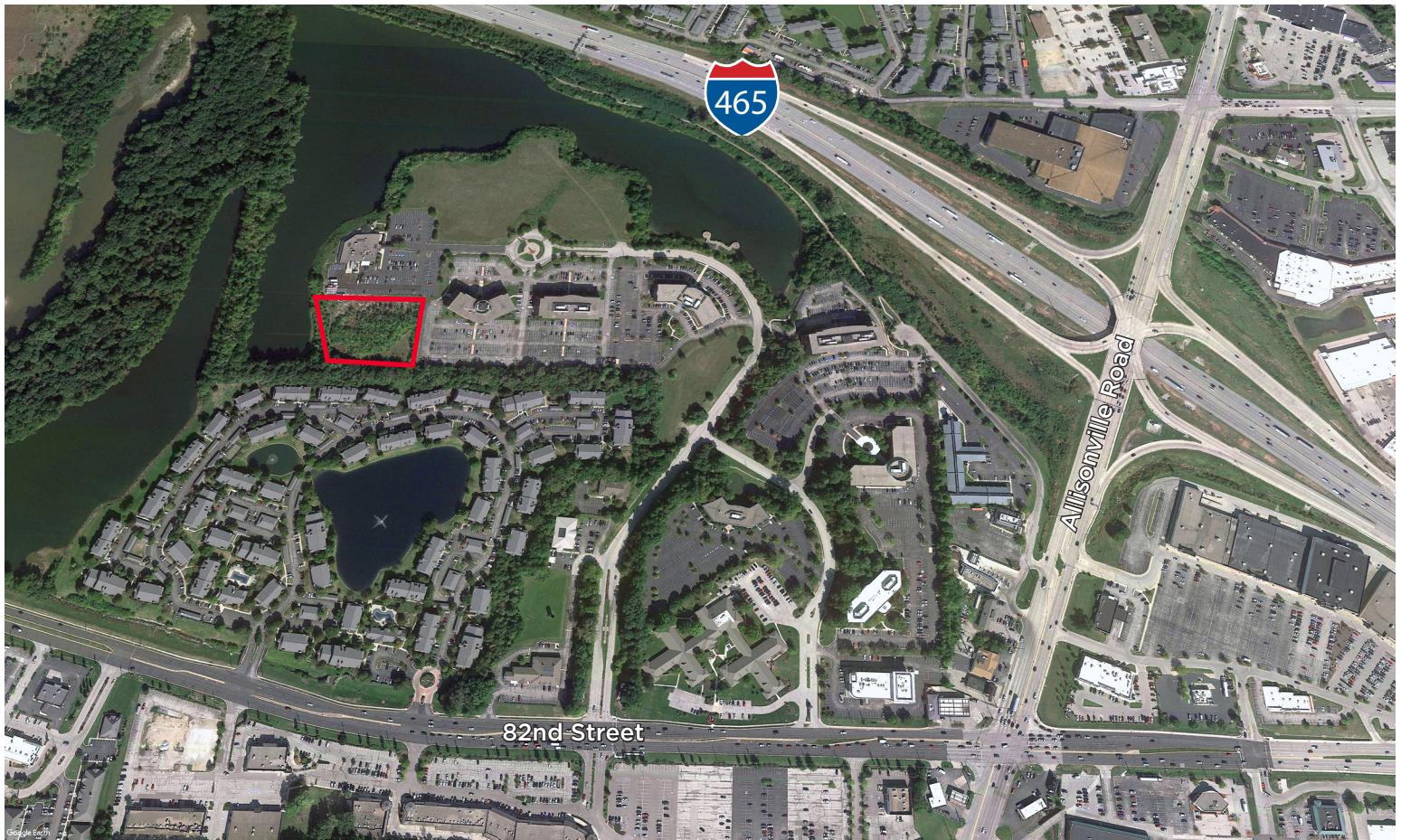
matt.kite@cushwake.com

One American Square, Suite 1800 | Indianapolis, IN 46282
Main +1 317 639 0515 | Fax +1 317 639 0504
cushmanwakefield.com

©2025 Cushman & Wakefield. All rights reserved. The information contained in this communication is strictly confidential. This information has been obtained from sources believed to be reliable but has not been verified. No warranty or representation, express or implied, is made as to the condition of the property (or properties) referenced herein or as to the accuracy or completeness of the information contained herein, and same is submitted subject to errors, omissions, change of price, rental or other conditions, withdrawal without notice, and to any special listing conditions imposed by the property owner(s). Any projections, opinions or estimates are subject to uncertainty and do not signify current or future property performance.

3.27 ACRES

Land at Allison Pointe
8560 Allison Pointe Blvd
Indianapolis, IN 46250



Demographics

	1 Mile	3 Mile	5 Mile
Population	6,354	57,854	168,459
AVG. HH Income	\$97,429	\$112,555	\$126,958
Daytime Population	11,966	81,595	193,480

Traffic Counts

82nd Street	23,091 AADT
Allisonville Road	40,417 AADT
I-465	146,410 AADT

MATT KITE

Director
+1 317 616 3981
matt.kite@cushwake.com

One American Square, Suite 1800
Indianapolis, IN 46282
Main +1 317 639 0515
Fax +1 317 639 0504
cushmanwakefield.com