

FOR LEASE OFFICE SPACE

2191 THURSTON DR.

OTTAWA, ON





# PROPERTY FEATURES



## BUILDING SIZE

27,800 SF



## YEAR BUILT

1989



## RENOVATED

2021



## SPACE AVAILABLE

2,705 SF



## PARKING

3:1,000



## FURNITURE

Available



## LEASE RATE

\$12.00 PSF NNN

## ADDITIONAL RENT

\$9.75 PSF

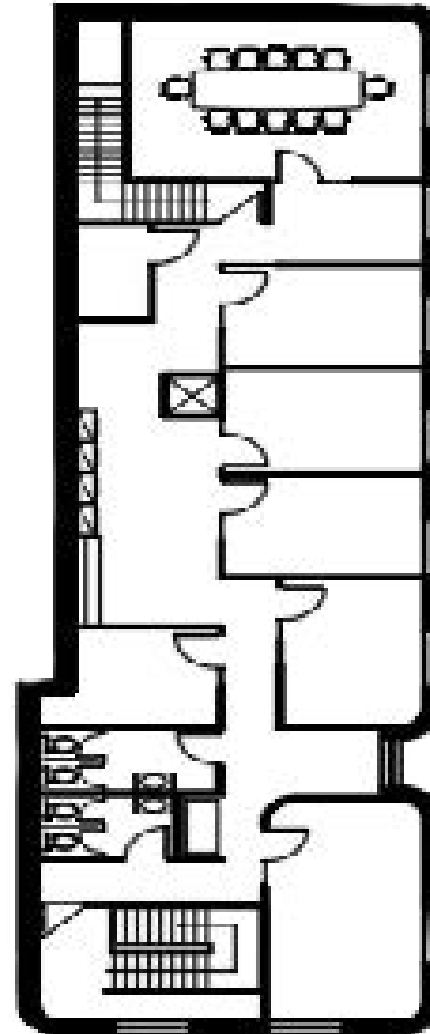
“

Nestled within the prestigious Ottawa Business Park, this office/warehouse facility offers superior features for your business needs.

”

# FLOOR PLAN

2,705 SF of 2<sup>nd</sup> floor office space









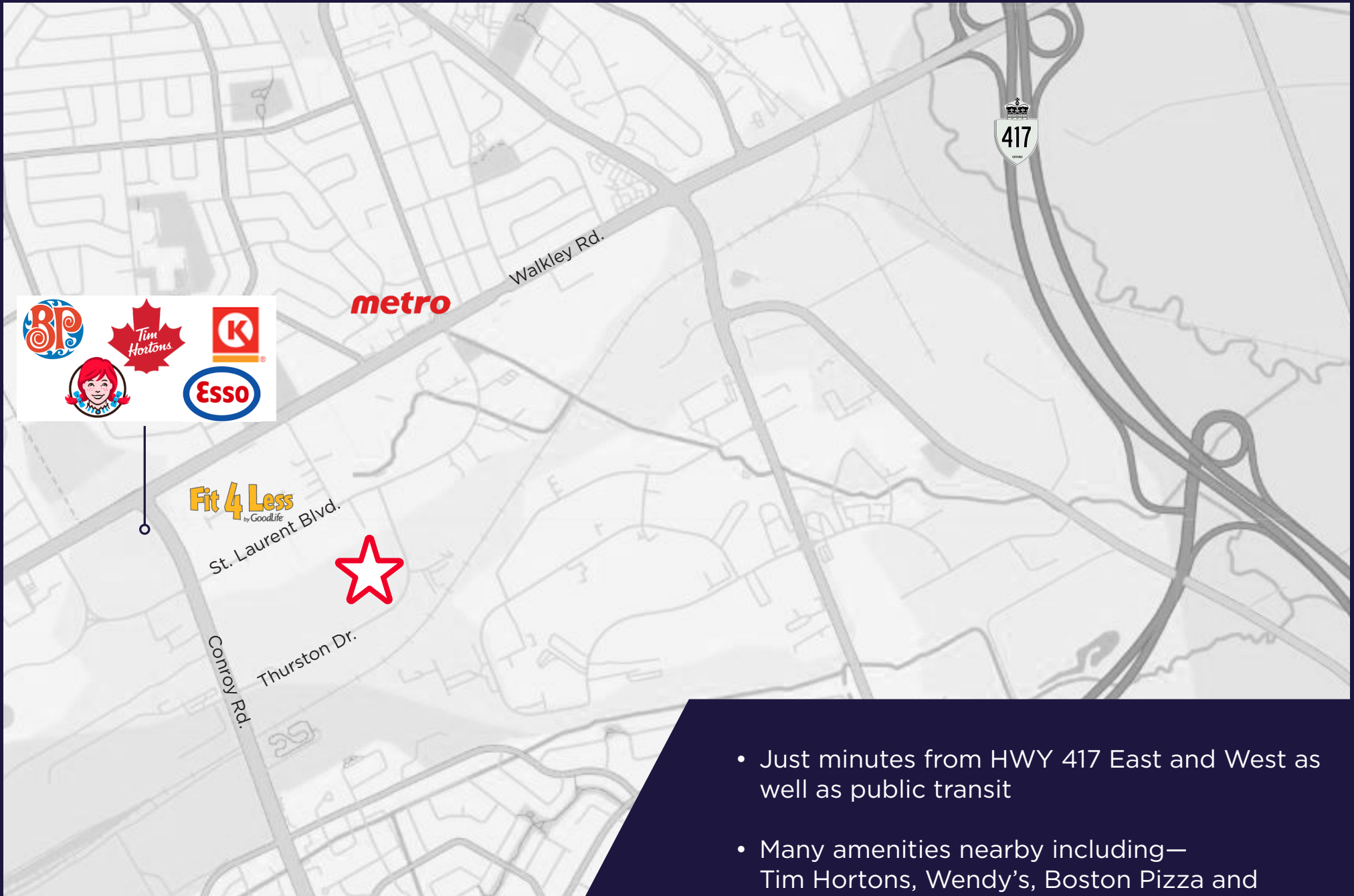








# LOCAL AMENITIES



- Just minutes from HWY 417 East and West as well as public transit
- Many amenities nearby including—  
Tim Hortons, Wendy's, Boston Pizza and Fit4Less



# CONTACT

**NEIL MASON**  
**Vice President**

**Sales Representative**

+1 613 780 1571

[nmason@cwottawa.com](mailto:nmason@cwottawa.com)

**ALEX LEFEBVRE**

**Sales Representative**

+1 613 780 1586

[alefebvre@cwottawa.com](mailto:alefebvre@cwottawa.com)

©2025 Cushman & Wakefield Ottawa. Brokerage Independently Owned and Operated. All rights reserved. The material in this presentation has been prepared solely for information purposes, and is strictly confidential. Any disclosure, use, copying or circulation of this presentation (or the information contained within it) is strictly prohibited, unless you have obtained Cushman & Wakefield's prior written consent. The views expressed in this presentation are the views of the author and do not necessarily reflect the views of Cushman & Wakefield. Neither this presentation nor any part of it shall form the basis of, or be relied upon in connection with any offer, or act as an inducement to enter into any contract or commitment whatsoever. NO REPRESENTATION OR WARRANTY IS GIVEN, EXPRESS OR IMPLIED, AS TO THE ACCURACY OF THE INFORMATION CONTAINED WITHIN THIS PRESENTATION, AND CUSHMAN & WAKEFIELD IS UNDER NO OBLIGATION TO SUBSEQUENTLY CORRECT IT IN THE EVENT OF ERRORS.