

FOR SALE

**±5,376 SF AVAILABLE**



2301 WEST MARKET STREET

**LOUISVILLE, KY 40212**

*FREESTANDING RETAIL BUILDING*

# PROPERTY HIGHLIGHTS

## Retail building in Louisville, KY for sale!

- Freestanding retail building
- 15' x 18' Vault
- 15- 18 parking spaces
- Corner Lot on Market Street
- Excellent Visibility

Building Size: 5,376 sf

Parcel #: 003L00130000

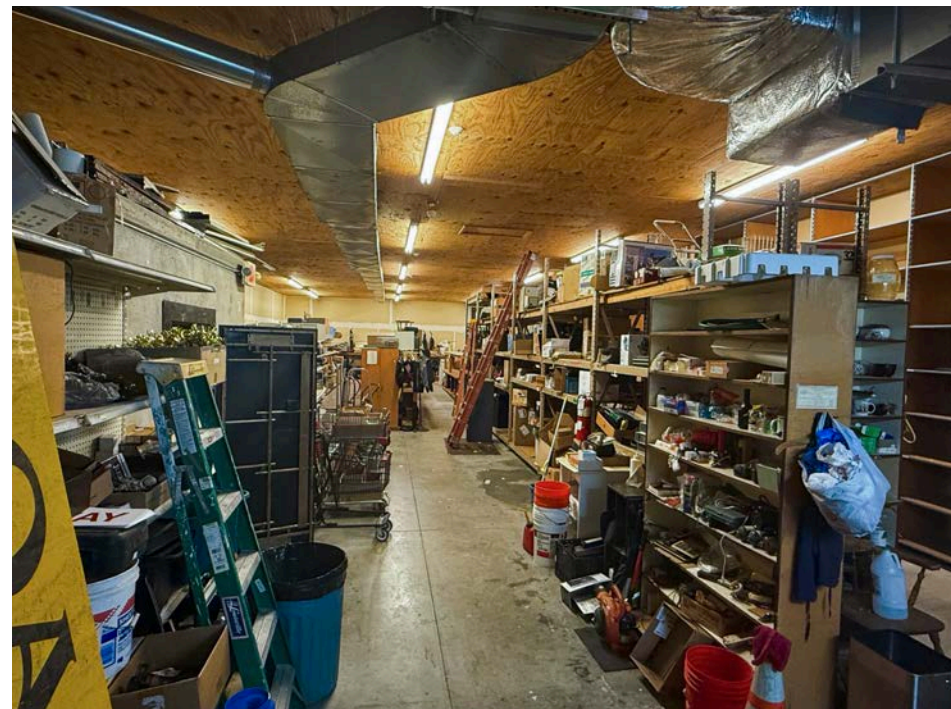
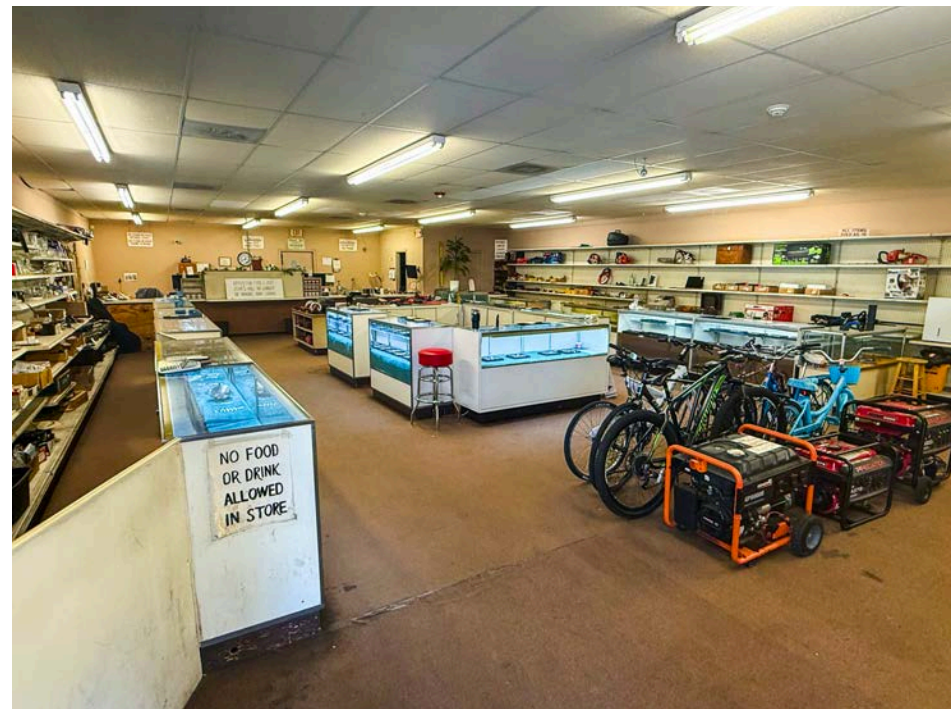
Zoning: C-1

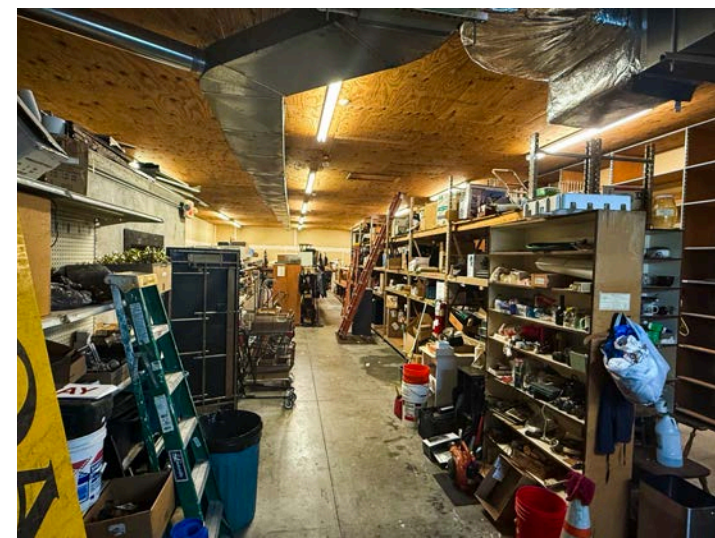
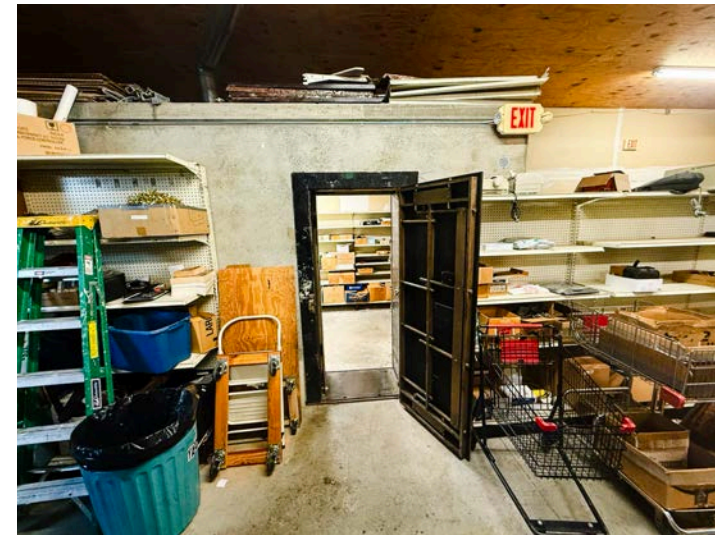
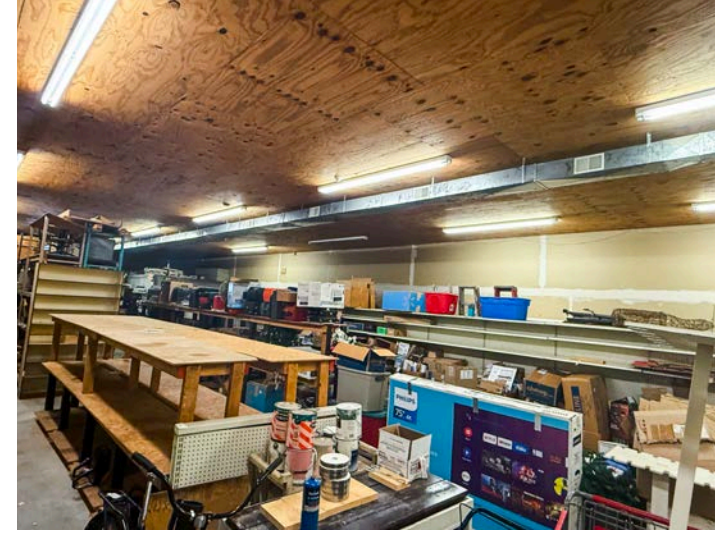
Year Built: 1993

Parking Spaces: 15-18

Parking Ratio: 3/1

Population Demographics: 1-Mile 13,375  
3-Miles 98,462







**2301 W. Market St.**

**EASY ACCESS TO INTERSTATES**

**1.6 MILES**

TO INTERSTATE I-264



**15.1 MILES**

TO UPS WORLDPORT/  
AIRPORT



**12.0 MILES**

TO FORD ASSEMBLY PLANT



**15.1 MILES**

TO GE APPLIANCE PARK



**16.4 MILES**

TO FEDEX FREIGHT



# CONTACT INFORMATION

## **CRAIG COLLINS**

**Senior Director**

ccollins@commercialkentucky.com

+1 502 719 3221

## **AUSTIN ENGLISH**

**Senior Associate**

aenglish@commercialkentucky.com

+1 502 719 3258



©2025 Cushman & Wakefield. All rights reserved. The information contained in this communication is strictly confidential. This information has been obtained from sources believed to be reliable but has not been verified. NO WARRANTY OR REPRESENTATION, EXPRESS OR IMPLIED, IS MADE AS TO THE CONDITION OF THE PROPERTY (OR PROPERTIES) REFERENCED HEREIN OR AS TO THE ACCURACY OR COMPLETENESS OF THE INFORMATION CONTAINED HEREIN, AND SAME IS SUBMITTED SUBJECT TO ERRORS, OMISSIONS, CHANGE OF PRICE, RENTAL OR OTHER CONDITIONS, WITHDRAWAL WITHOUT NOTICE, AND TO ANY SPECIAL LISTING CONDITIONS IMPOSED BY THE PROPERTY OWNER(S). ANY PROJECTIONS, OPINIONS OR ESTIMATES ARE SUBJECT TO UNCERTAINTY AND DO NOT SIGNIFY CURRENT OR FUTURE PROPERTY PERFORMANCE.

Independently Owned & Operated / A Member of the Cushman & Wakefield Alliance