

FOR SUBLEASE
10,269 SF OFFICE SPACE



10 **WEST END**
Minneapolis, MN



10 WEST END

Minneapolis, MN

SUBLEASE FEATURES

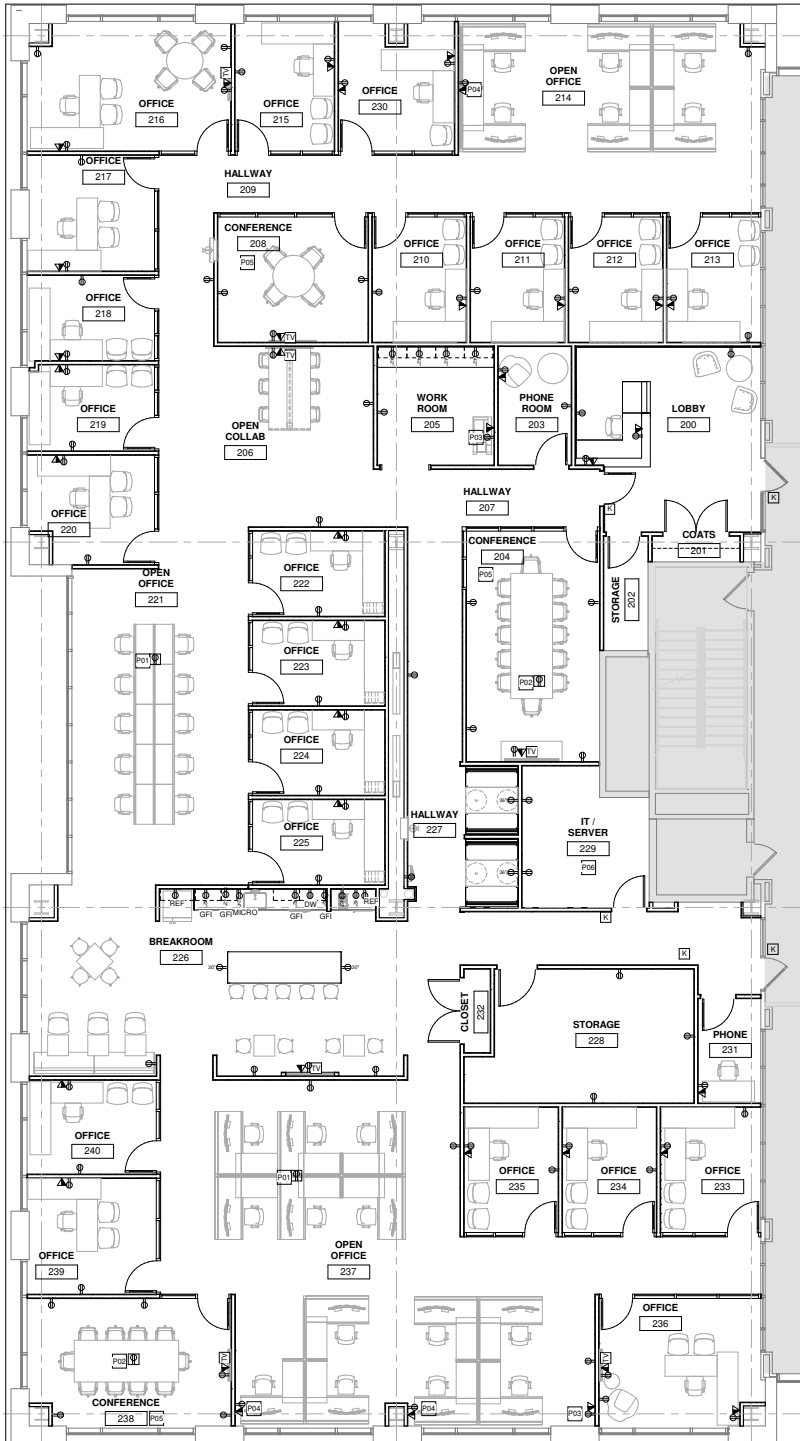
- 10,269 SF Available
- Sublease term through May 31, 2033
- High quality modern buildout
- Furniture included

PROPERTY HIGHLIGHTS

- Sky lounge with views of Downtown Minneapolis skyline
- Fitness center with lockers and showers
- Conference Center
- Bike room
- Green and The Grain Café
- Grab n' Go Market
- Free covered parking in attached ramp
- Garage parking
- Wellness room
- On-site Property management and engineering team
- Walkability to numerous hotels, restaurants, shopping, and high-quality apartments
- Easy access to major freeways: I-394 and Hwy 100
- Extensive mass transit
- 5 miles from Downtown Minneapolis

10 WEST END

Minneapolis, MN



10,269 SF SUITE 211

- 21 offices
- Open collaboration areas
- Modern kitchen/ breakroom
- Large conference room
- Medium conference room
- Small conference room
- 8 Existing workstations with room for 14 more
- Large storage room
- Server Room
- Phone Room



• The majority of the furniture shown on this plan is accurate, however there is some furniture that is no longer available

For more information, contact:

BILL ROTHSTEIN
Executive Director
(952) 893 8214
bill.rothstein@cushwake.com





10 WEST END Minneapolis, MN

©2025 Cushman & Wakefield. All rights reserved. The information contained in this communication is strictly confidential. This information has been obtained from sources believed to be reliable but has not been verified. NO WARRANTY OR REPRESENTATION, EXPRESS OR IMPLIED, IS MADE AS TO THE CONDITION OF THE PROPERTY (OR PROPERTIES) REFERENCED HEREIN OR AS TO THE ACCURACY OR COMPLETENESS OF THE INFORMATION CONTAINED HEREIN, AND SAME IS SUBMITTED SUBJECT TO ERRORS, OMISSIONS, CHANGE OF PRICE, RENTAL OR OTHER CONDITIONS, WITHDRAWAL WITHOUT NOTICE, AND TO ANY SPECIAL LISTING CONDITIONS IMPOSED BY THE PROPERTY OWNER(S). ANY PROJECTIONS, OPINIONS OR ESTIMATES ARE SUBJECT TO UNCERTAINTY AND DO NOT SIGNIFY CURRENT OR FUTURE PROPERTY PERFORMANCE. COE-PM-West-04.10.2025

For more information, contact:

BILL ROTHSTEIN
Executive Director
(952) 893 8214
bill.rothstein@cushwake.com

