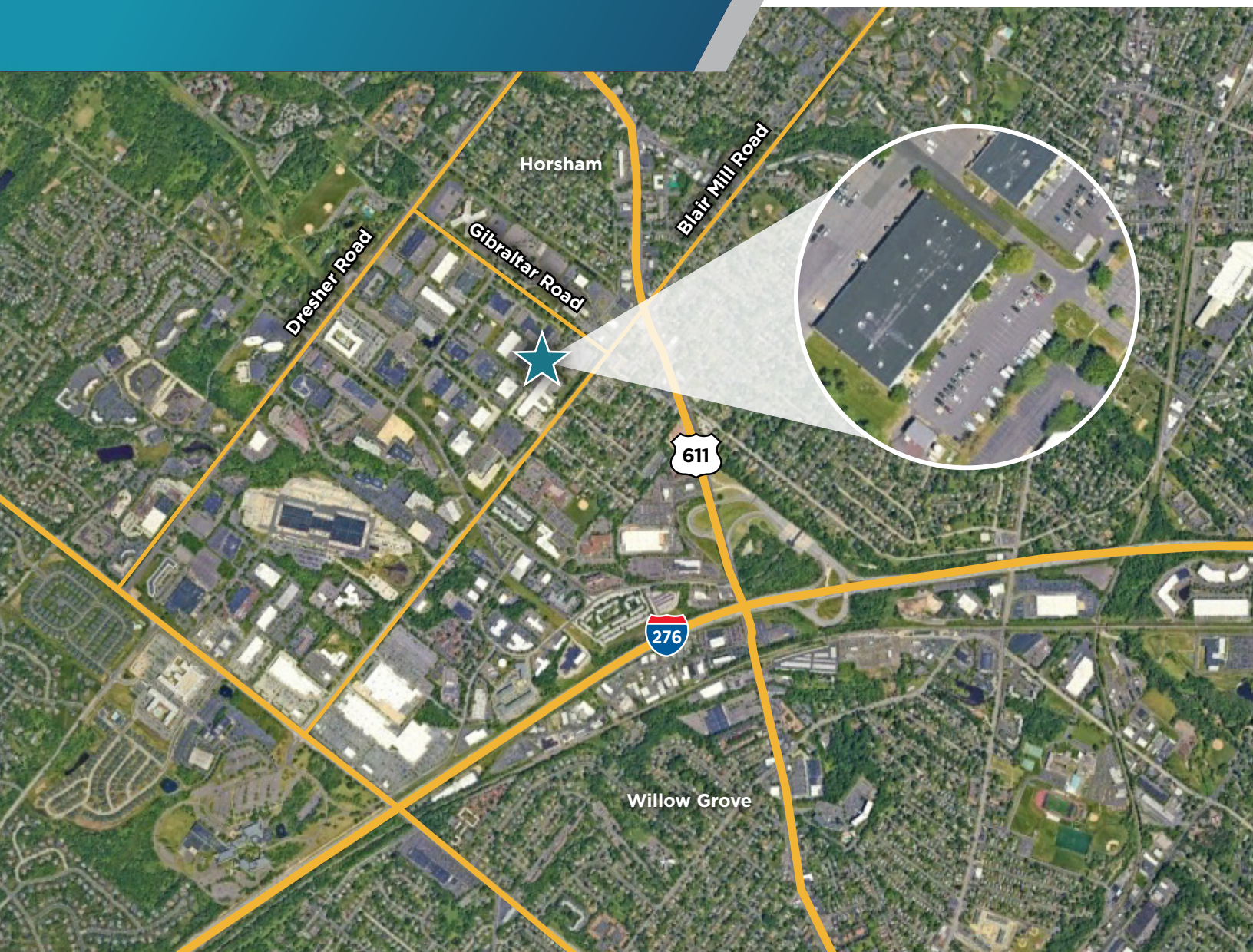


103-109

GIBRALTAR ROAD
HORSHAM, PENNSYLVANIA

FOR SUBLEASE
TERM THROUGH 5/2027



±18,000 SF AVAILABLE

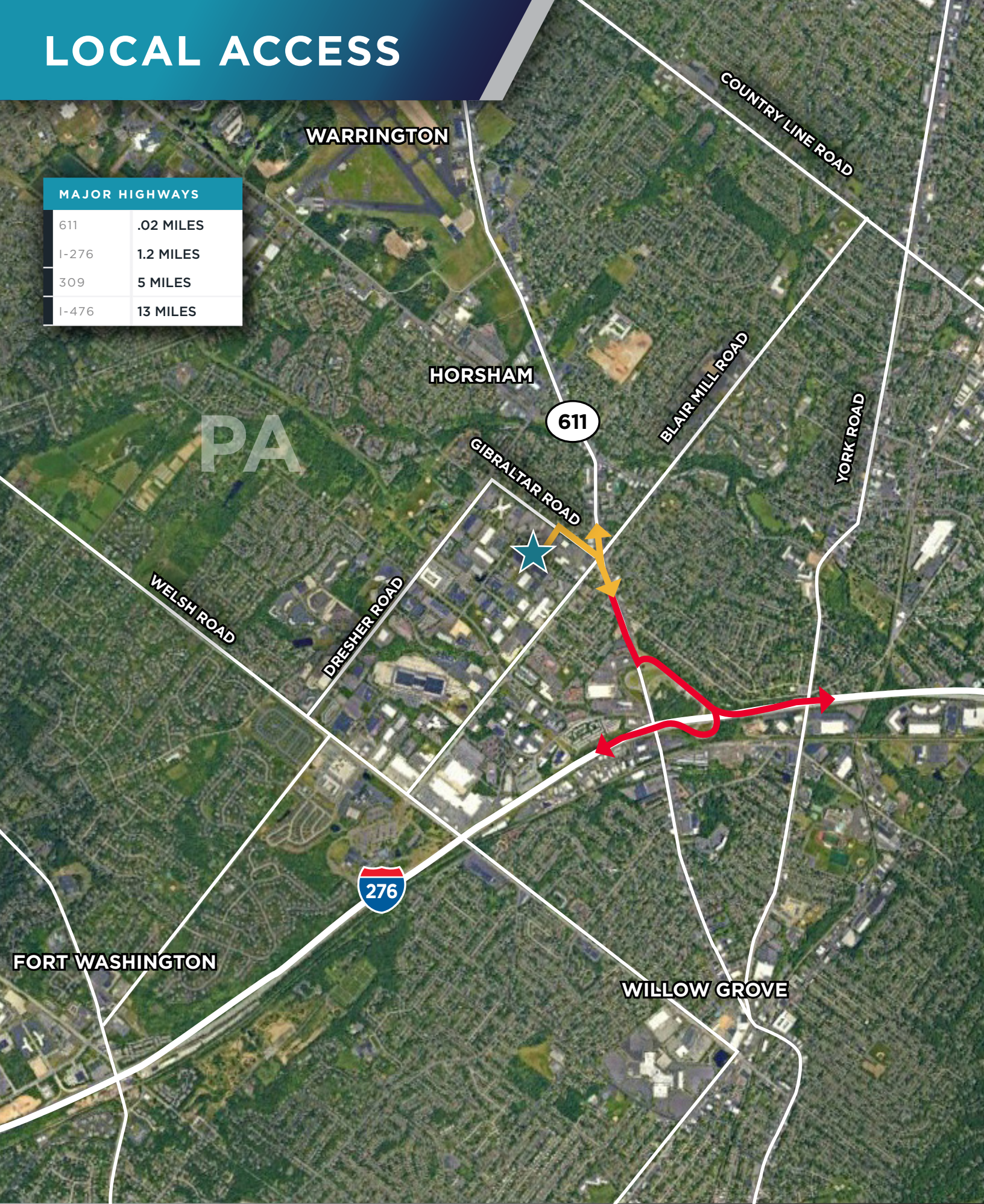
Raquel Perry
Director
215 963 4070
raquel.perrycushwake.com

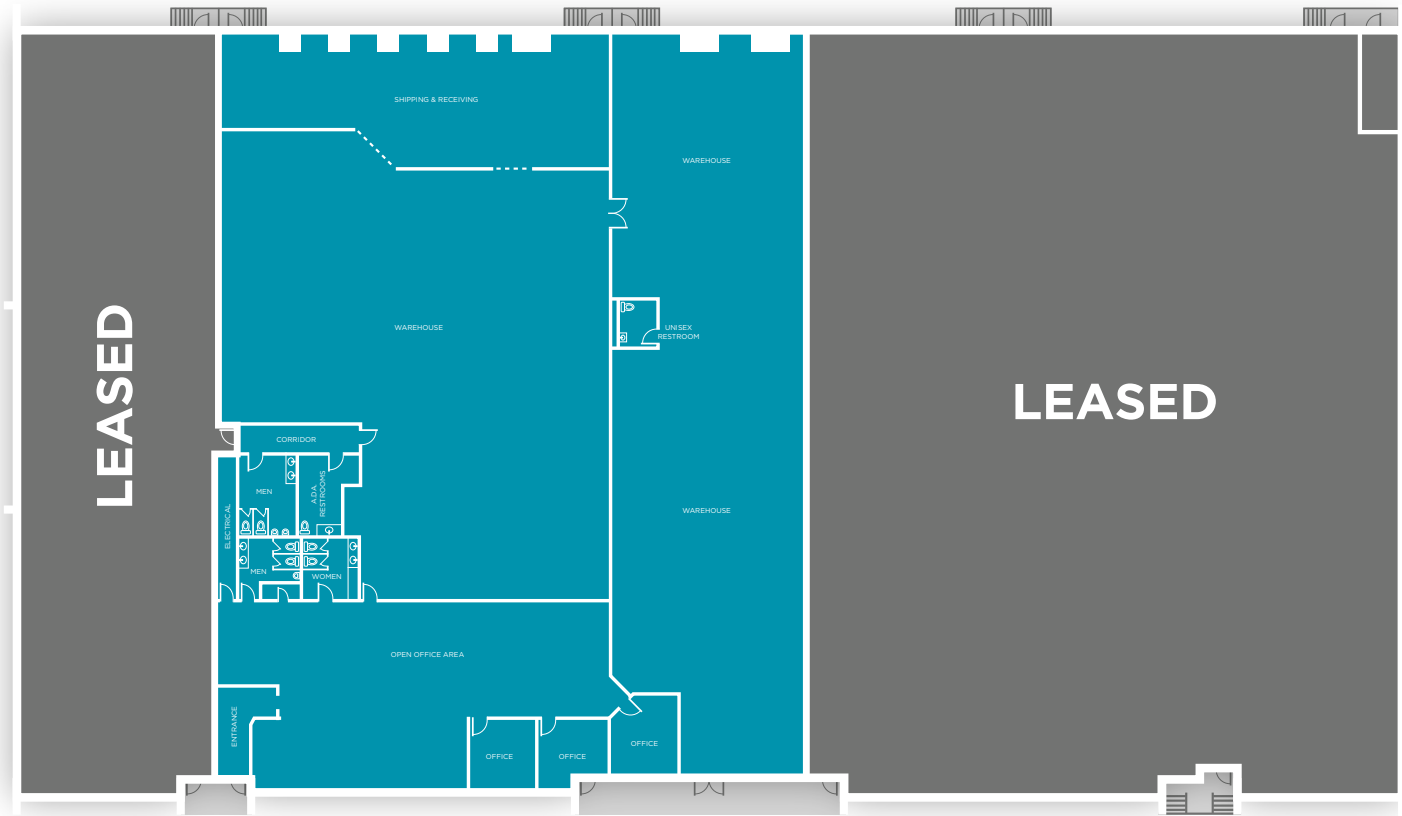
Christopher Butera
Director
215 963 4011
chris.butera@cushwake.com



LOCAL ACCESS

MAJOR HIGHWAYS	
611	.02 MILES
I-276	1.2 MILES
309	5 MILES
I-476	13 MILES

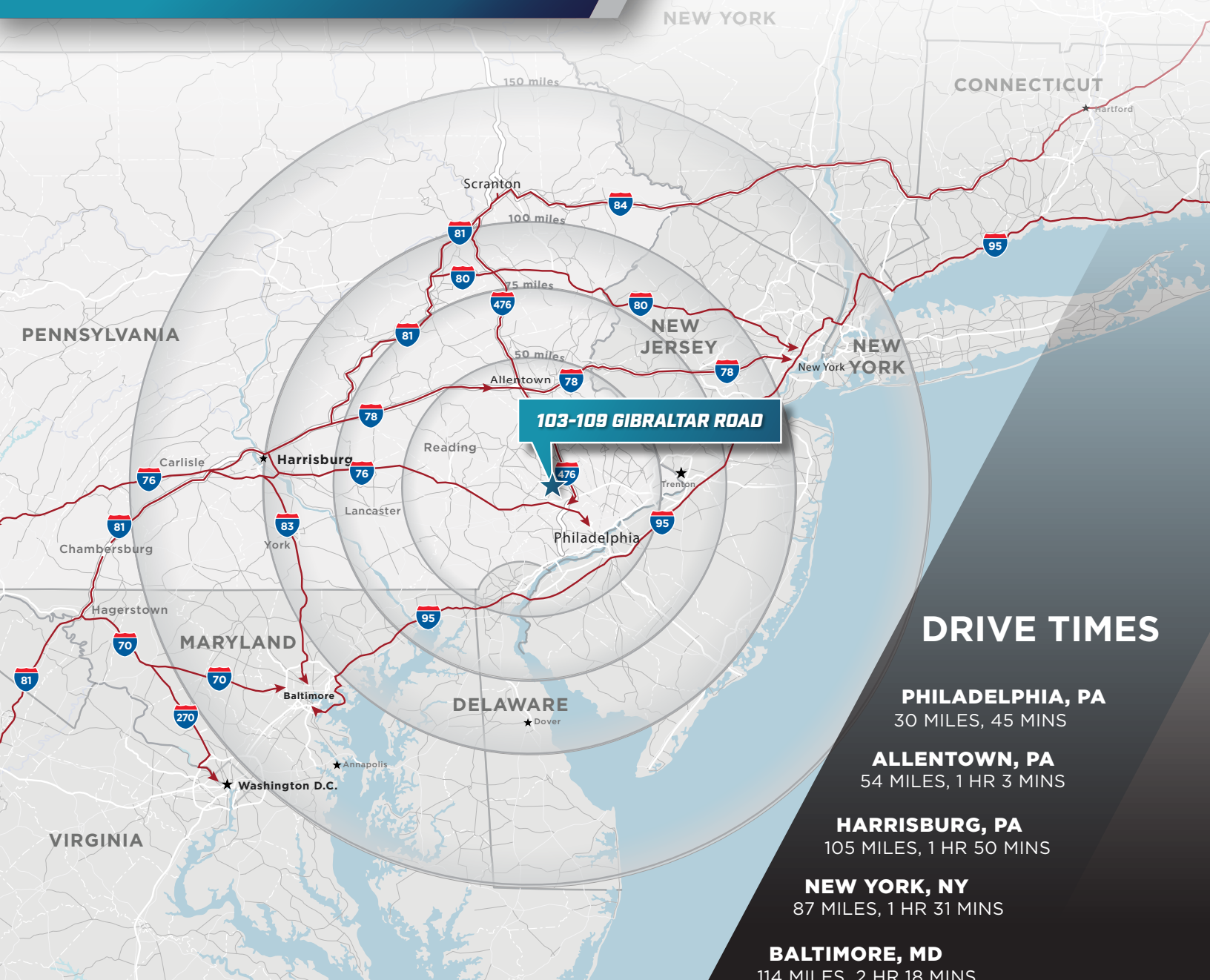




Total Building SF	±42,000 SF	Township	Horsham
Available SF	±18,000 SF	Power	200 AMPS, 120/208V
Loading	3 Dock Height Doors 4 Van Height Doors	Lighting	LED
Clear Height	16'	Fire Protection	Wet System

REGIONAL MAP

FOR SUBLEASE



DRIVE TIMES

PHILADELPHIA, PA
30 MILES, 45 MINS

ALLENTOWN, PA
54 MILES, 1 HR 3 MINS

HARRISBURG, PA
105 MILES, 1 HR 50 MINS

NEW YORK, NY
87 MILES, 1 HR 31 MINS

BALTIMORE, MD
114 MILES, 2 HR 18 MINS

WASHINGTON, D.C.
153 MILES, 3 HR 19 MINS

BOSTON, MA
300 MILES, 5 HR 22 MINS

Cushman & Wakefield of Pennsylvania, LLC.
1650 Market Street, 48th Floor | Philadelphia, PA 19103
+1 215 963 4000

cushmanwakefield.com

For More Information, Please Contact:

Raquel Perry
Director
215 963 4070
raquel.perrycushwake.com

Christopher Butera
Director
215 963 4011
chris.butera@cushwake.com

Cushman & Wakefield of Pennsylvania, LLC is the Owner's exclusive agent for the property.

Cushman & Wakefield Copyright 2024. No warranty or representation, express or implied, is made to the accuracy or completeness of the information contained herein, and same is submitted subject to errors, omissions, change of price, rental or other conditions, withdrawal without notice, and to any special listing conditions imposed by the property owner(s). As applicable, we make no representation as to the condition of the property (or properties) in question.

