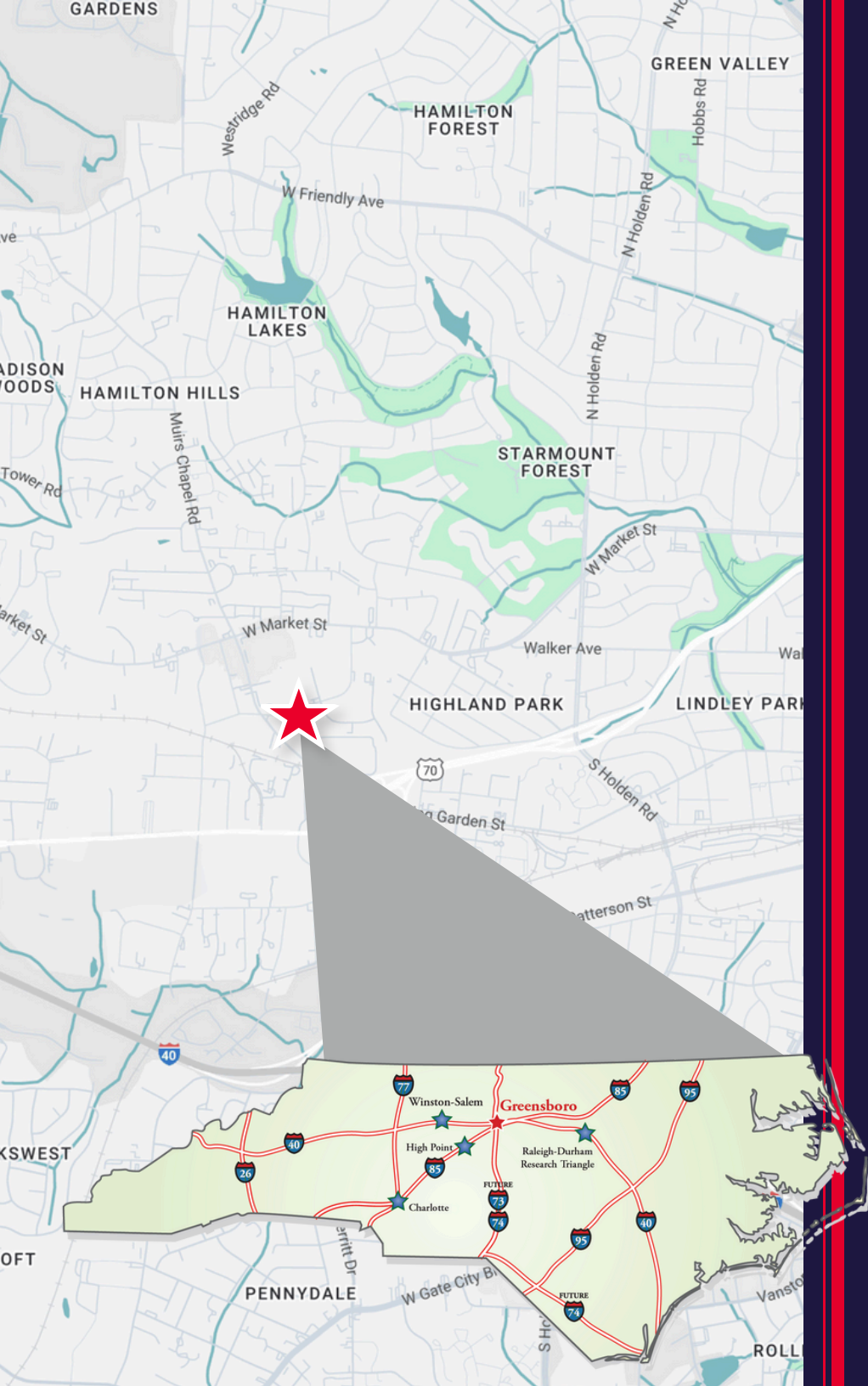


FLEX SPACE FOR LEASE

307 POMONA DR

GREENSBORO, NC 27401





PROPERTY HIGHLIGHTS

- +/- 2,568 - SF Flex Space Available
- Attractive single-story brick buildings
- Functional floor plans
- Excellent access to Wendover Avenue
- Located within Pomona Park

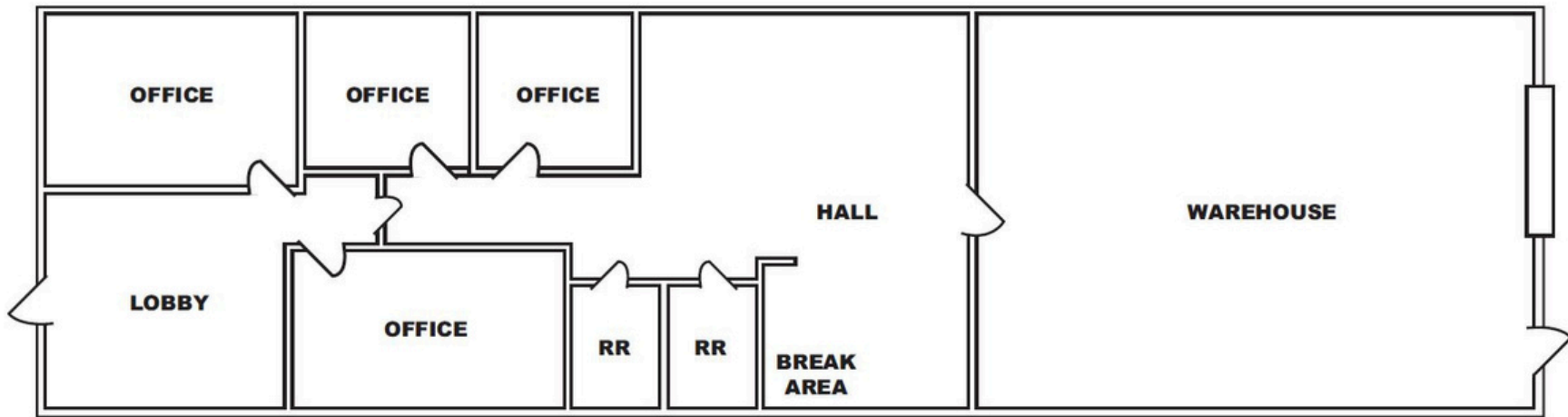
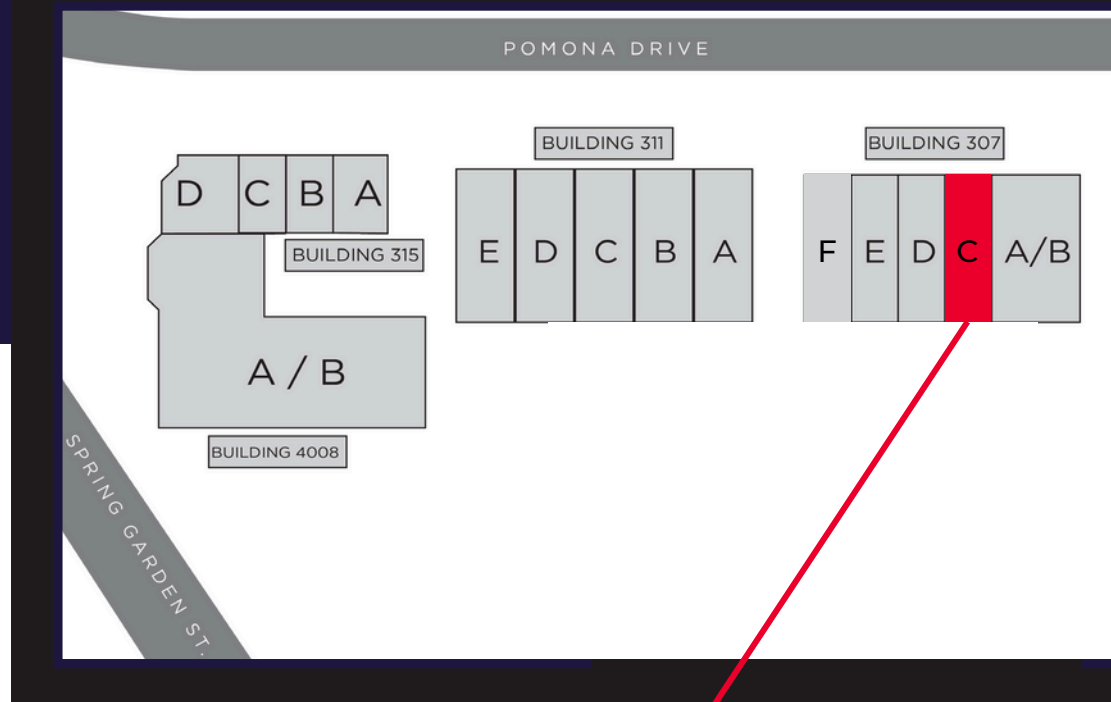


FLOORPLAN / SITE PLAN

BUILDING 307 | SUITE C

±2,568 RSF FLEX

OFFICE / WAREHOUSE AVAILABLE





Ryan Gioffre
Senior Director
+1 336 601 3488
ryan.gioffre@cushwake.com

628 Green Valley Rd,
Suite 202,
Greensboro NC 27408

©2025 Cushman & Wakefield. All rights reserved. The information contained in this communication is strictly confidential. This information has been obtained from sources believed to be reliable but has not been verified. NO WARRANTY OR REPRESENTATION, EXPRESS OR IMPLIED, IS MADE AS TO THE CONDITION OF THE PROPERTY (OR PROPERTIES) REFERENCED HEREIN OR AS TO THE ACCURACY OR COMPLETENESS OF THE INFORMATION CONTAINED HEREIN, AND SAME IS SUBMITTED SUBJECT TO ERRORS, OMISSIONS, CHANGE OF PRICE, RENTAL OR OTHER CONDITIONS, WITHDRAWAL WITHOUT NOTICE, AND TO ANY SPECIAL LISTING CONDITIONS IMPOSED BY THE PROPERTY OWNER(S). ANY PROJECTIONS, OPINIONS OR ESTIMATES ARE SUBJECT TO UNCERTAINTY AND DO NOT SIGNIFY CURRENT OR FUTURE PROPERTY PERFORMANCE.