



BOUTIQUE WATERFRONT BUILDING WITH BAY VIEWS

# 100 EMBARCADERO

SAN FRANCISCO, CA

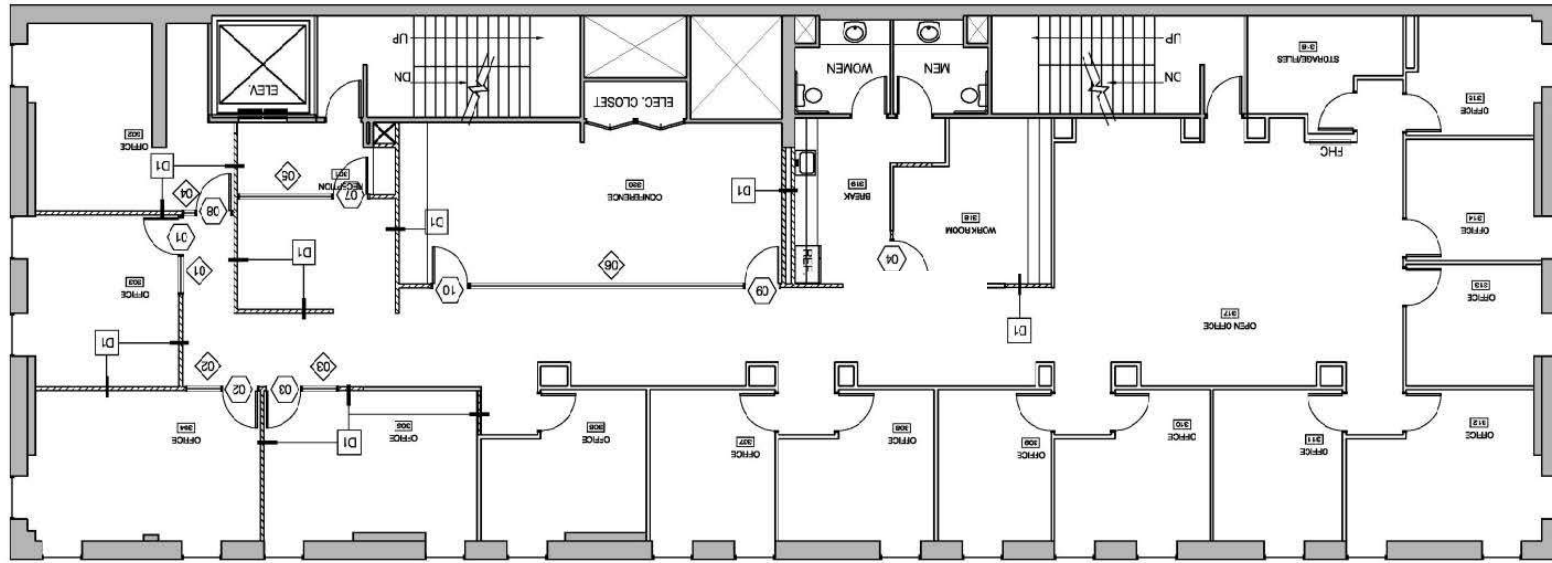


**Brad Werner**  
Senior Director  
+1 415 377 2205  
brad.werner@cushwake.com  
Lic #: 00849822

**Danny Pickard**  
Director  
+1 415 773 3572  
Danny.Pickard@cushwake.com  
Lic #: 01975977

**AVAILABLE FOR LEASE**

# Suite 300



**High-end office intensive space, great for law firm, VC, or professional services**

- 14 Window Lines
- 1 Large Congerence Room
- Break Area
- Storage
- Bay Views
- Prime Location
- High Quality Improvements
- Available in 30 days



**± 5,812**

Available SF



**5/1/26**

Date Available  
(Potentially Sooner)

**Brad Werner**  
Senior Director  
+1 415 377 2205  
brad.werner@cushwake.com  
Lic #: 00849822

**Danny Pickard**  
Director  
+1 415 773 3572  
Danny.Pickard@cushwake.com  
Lic #: 01975977



# Suite 300



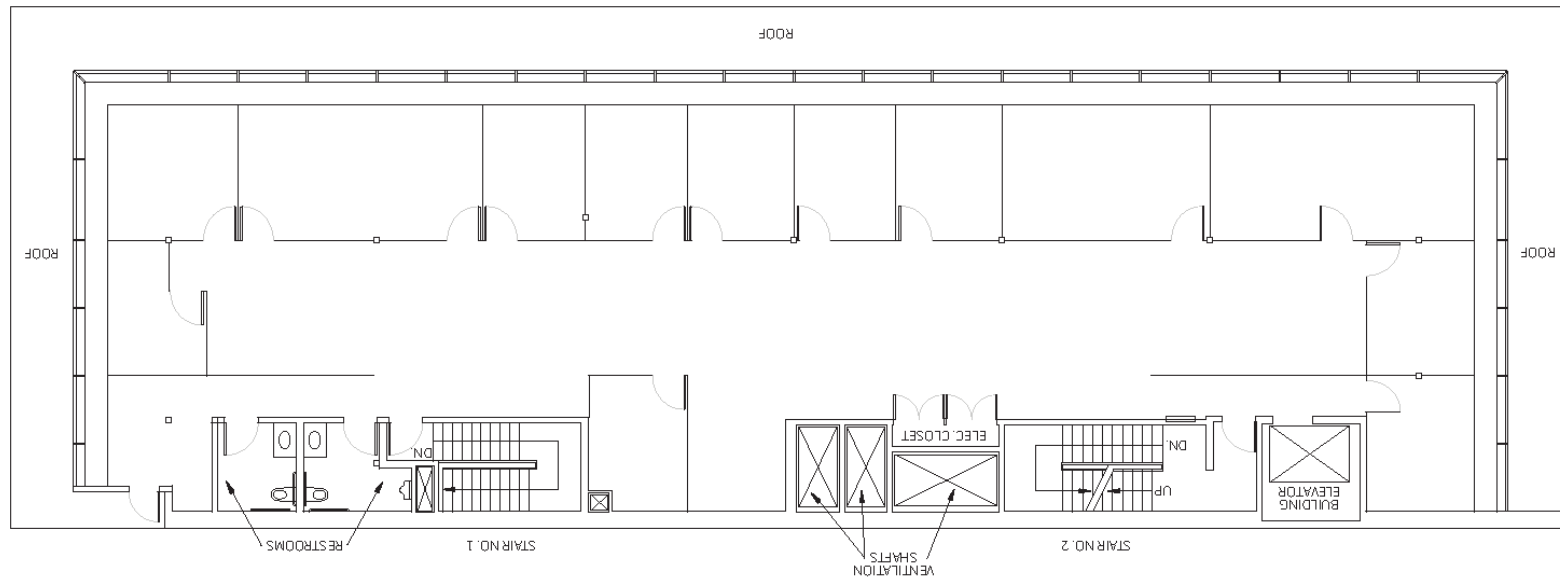
**Brad Werner**  
Senior Director  
+1 415 377 2205  
brad.werner@cushwake.com  
Lic #: 00849822

**Danny Pickard**  
Director  
+1 415 773 3572  
Danny.Pickard@cushwake.com  
Lic #: 01975977





# Suite 400



**Penthouse floor, office intensive buildout great for law firm, VC, or professional services**

- Abundant Natural Light
- Bay Views
- Penthouse Suite
- Prime Location
- High Quality Improvements



**± 4,942**

Available SF



**6/1/25**

Date Available  
(Subject to 30 day  
advance notice)

**Brad Werner**  
Senior Director  
+1 415 377 2205  
brad.werner@cushwake.com  
Lic #: 00849822

**Danny Pickard**  
Director  
+1 415 773 3572  
Danny.Pickard@cushwake.com  
Lic #: 01975977



## NEIGHBORING RESTAURANTS/BARS

- 1 Barcha Restaurant
- 2 Sweetgreen
- 3 Red's Java House
- 4 Waterbar Restaurant
- 5 Fogo de Chão Brazilian Steakhouse
- 6 Town's End Brunch
- 7 21st Amendment Brewery & Restaurant
- 8 Garaje
- 9 Black Hammer Brewing Company
- 10 Brickhouse Cafe & Bar
- 11 Pinecrest Diner
- 12 Wayfare Tavern

## ATTRACTION

- 13 Chase Center
- 14 The Bay Bridge
- 15 Safeway
- 16 Oracle Park
- 17 San Francisco Museum of Modern Art
- 18 Yerba Buena Center for the Arts
- 19 Salesforce Park

## HOTELS

- 20 Club Quarters Hotel Embarcadero
- 21 Hyatt Place San Francisco/Downtown
- 22 LUMA Hotel
- 23 Hyatt Regency
- 24 Hampton Inn

## GYMS/FITNESS CENTERS

- 25 COR Fitness by Kinema Fitness
- 26 FITNESS SF - Transbay
- 27 FITNESS SF - Embarcadero
- 28 Bakar Fitness & Recreation Center







**For more information, please contact:**

**Brad Werner**

Senior Director

+1 415 377 2205

[brad.werner@cushwake.com](mailto:brad.werner@cushwake.com)

Lic #: 00849822

**Danny Pickard**

Director

+1 415 773 3572

[Danny.Pickard@cushwake.com](mailto:Danny.Pickard@cushwake.com)

Lic #: 01975977

©2025 Cushman & Wakefield. All rights reserved. The information contained in this communication is strictly confidential. This information has been obtained from sources believed to be reliable but has not been verified. NO WARRANTY OR REPRESENTATION, EXPRESS OR IMPLIED, IS MADE AS TO THE CONDITION OF THE PROPERTY (OR PROPERTIES) REFERENCED HEREIN OR AS TO THE ACCURACY OR COMPLETENESS OF THE INFORMATION CONTAINED HEREIN, AND SAME IS SUBMITTED SUBJECT TO ERRORS, OMISSIONS, CHANGE OF PRICE, RENTAL OR OTHER CONDITIONS, WITHDRAWAL WITHOUT NOTICE, AND TO ANY SPECIAL LISTING CONDITIONS IMPOSED BY THE PROPERTY OWNER(S). ANY PROJECTIONS, OPINIONS OR ESTIMATES ARE SUBJECT TO UNCERTAINTY AND DO NOT SIGNIFY CURRENT OR FUTURE PROPERTY PERFORMANCE.

