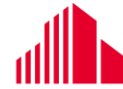


# 2910/3014 E HIGHWAY 146

LaGrange, KY 40031

38.425793, -85.343649 Coordinates

+/- 56 Acres



**CUSHMAN &  
WAKEFIELD**

Commercial Kentucky

**FOR SALE**



Google Earth

**+/- 56 AC**

**+/- 475,000 SF**  
POTENTIAL INDUSTRIAL  
DEVELOPMENT

**ZONED  
INDUSTRIAL**

**FAST  
GROWING  
AREA**

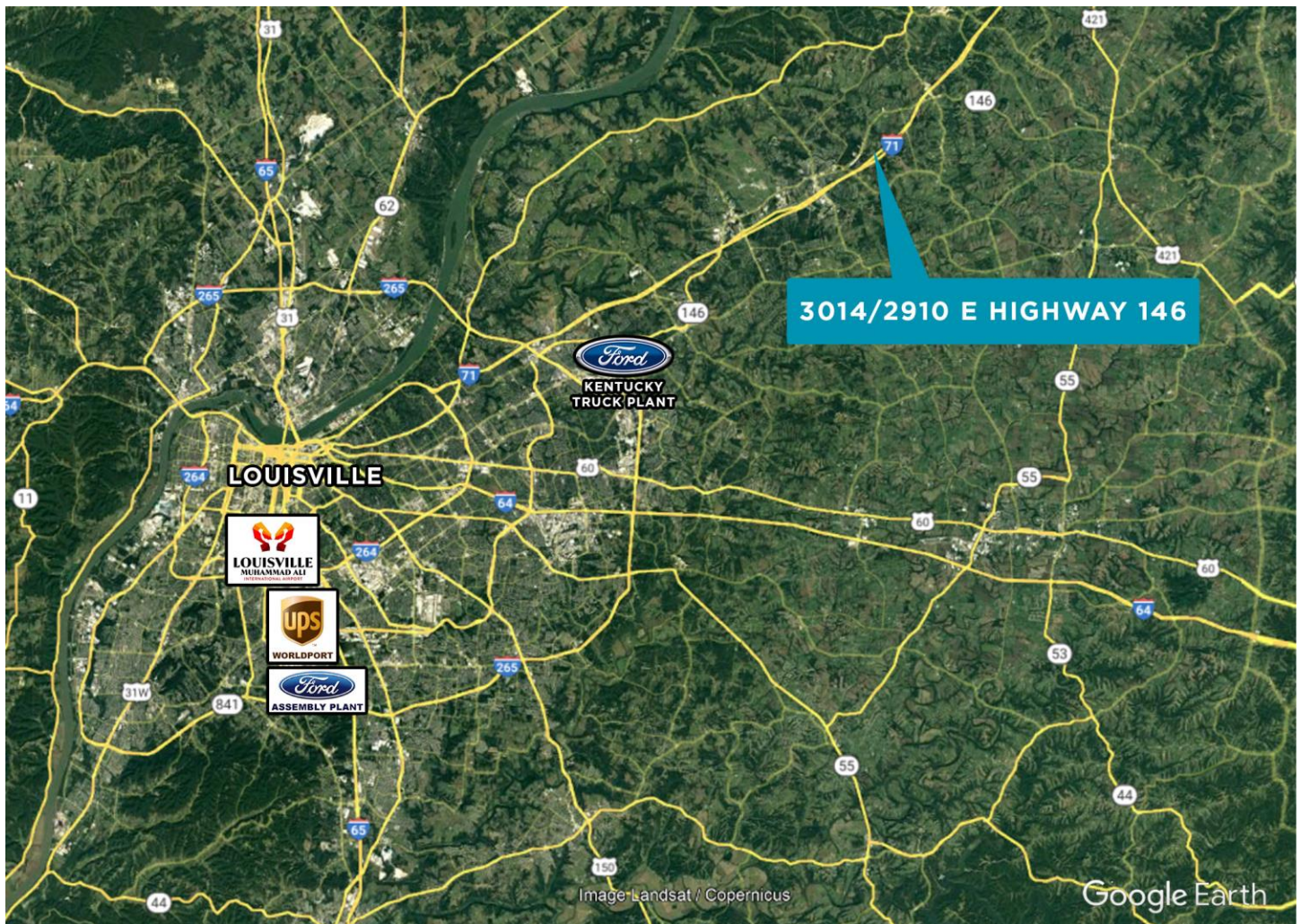
For more information, please contact:

**ROBERT B. WALKER, SIOR, CCIM**  
Senior Director  
1+ 502 719 3254  
rwalker@commercialkentucky.com

**GREG CHARMOLI**  
Senior Director  
1+ 502 719 3238  
gcharmoli@commercialkentucky.com

**JAKE F. MILLS**  
Senior Associate  
1+ 502 719 3252  
jmills@commercialkentucky.com





## SITE TRANSPORTATION:



**I-71 – 3 miles**

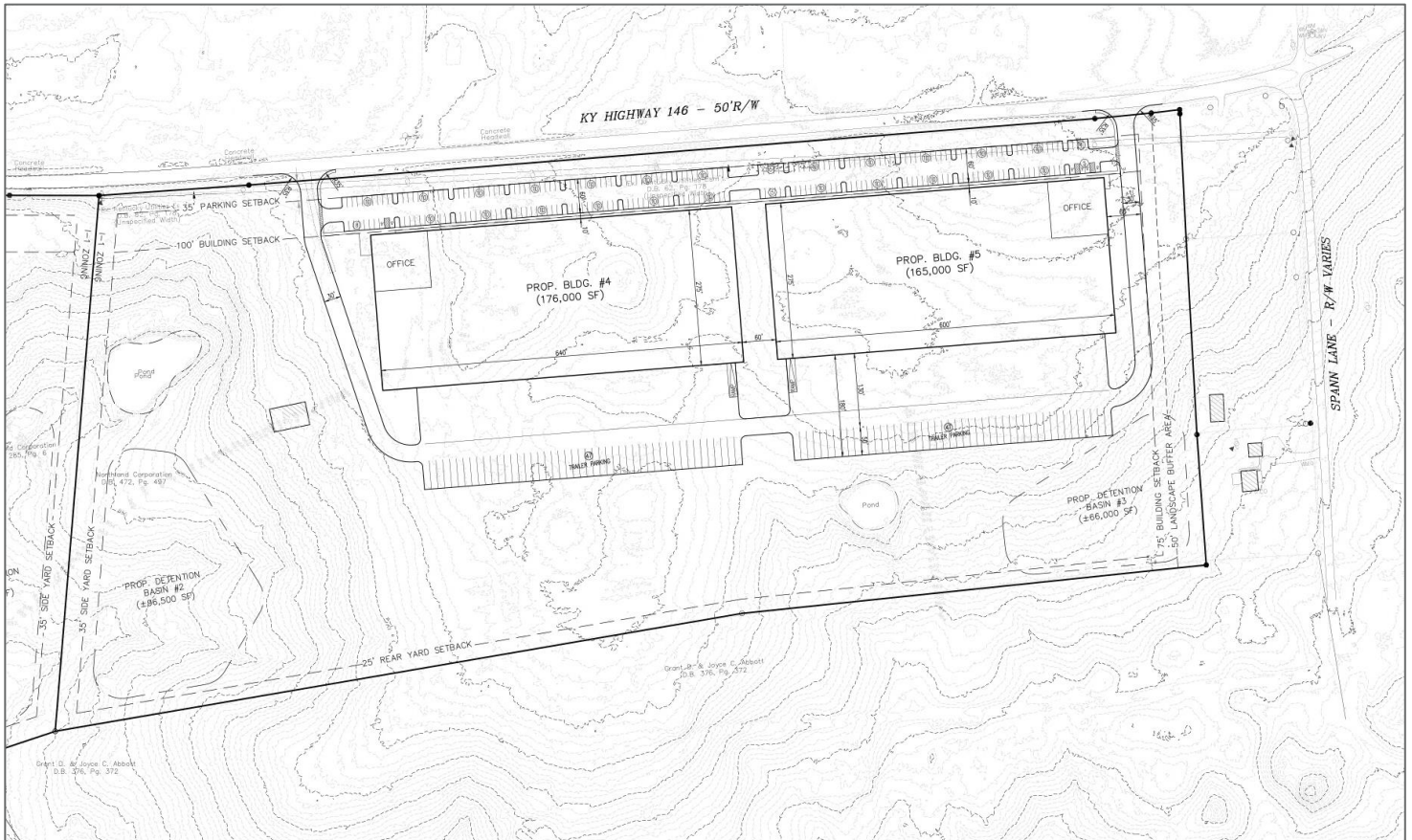
**Ford KTP (Kentucky Truck Plant) – 21 miles**

**UPS Worldport (including Muhammad Ali International Airport) – 32 miles**

**Ford LAP (Louisville Assembly Plant) – 35 miles**



# SITE PLAN



*Potential site plan subject to approvals.*

For more information, please contact:

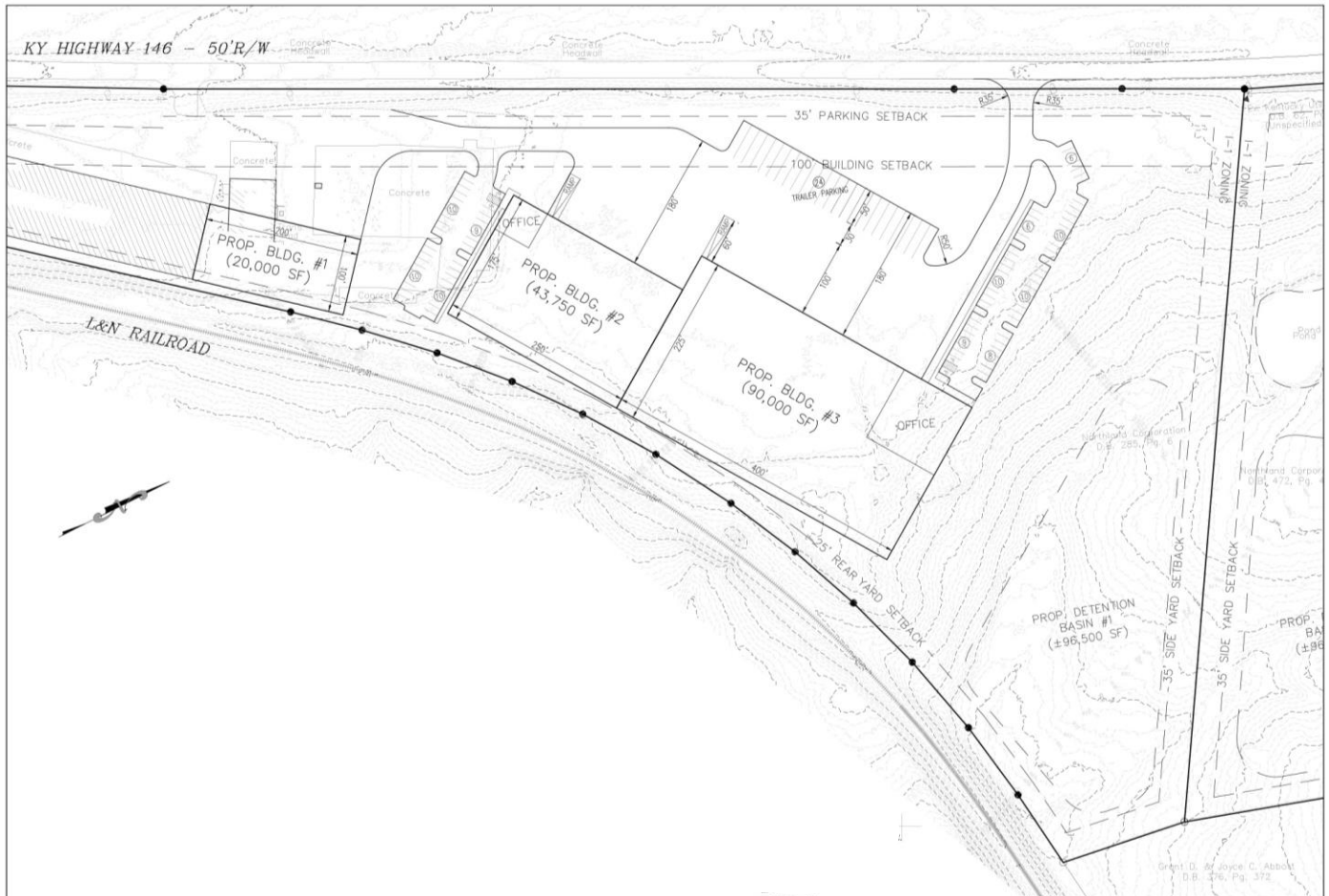
**ROBERT B. WALKER, SIOR, CCIM**  
Senior Director  
1+ 502 719 3254  
rwalker@commercialkentucky.com

**GREG CHARMOLI**  
Senior Director  
1+ 502 719 3238  
gcharmoli@commercialkentucky.com

**JAKE F. MILLS**  
Senior Associate  
1+ 502 719 3252  
jmills@commercialkentucky.com

Cushman & Wakefield | Commercial Kentucky  
333 E. Main Street, Suite 510  
Louisville, Kentucky 40202  
+1 502 589 5150  
www.commercialkentucky.com

# SITE PLAN



*Potential site plan subject to approvals.*

For more information, please contact:

**ROBERT B. WALKER, SIOR, CCIM**  
Senior Director  
1+ 502 719 3254  
rwalker@commercialkentucky.com

**GREG CHARMOLI**  
Senior Director  
1+ 502 719 3238  
gcharmoli@commercialkentucky.com

**JAKE F. MILLS**  
Senior Associate  
1+ 502 719 3252  
jmills@commercialkentucky.com

Cushman & Wakefield | Commercial Kentucky  
333 E. Main Street, Suite 510  
Louisville, Kentucky 40202  
+1 502 589 5150  
www.commercialkentucky.com

©2024 Cushman & Wakefield. All rights reserved. The information contained in this communication is strictly confidential. This information has been obtained from sources believed to be reliable but has not been verified. NO WARRANTY OR REPRESENTATION, EXPRESS OR IMPLIED, IS MADE AS TO THE CONDITION OF THE PROPERTY (OR PROPERTIES) REFERENCED HEREIN OR AS TO THE ACCURACY OR COMPLETENESS OF THE INFORMATION CONTAINED HEREIN, AND SAME IS SUBMITTED SUBJECT TO ERRORS, OMISSIONS, CHANGE OF PRICE, RENTAL OR OTHER CONDITIONS, WITHDRAWAL WITHOUT NOTICE, AND TO ANY SPECIAL LISTING CONDITIONS IMPOSED BY THE PROPERTY OWNER(S). ANY PROJECTIONS, OPINIONS OR ESTIMATES ARE SUBJECT TO UNCERTAINTY AND DO NOT SIGNIFY CURRENT OR FUTURE PROPERTY PERFORMANCE.