

FOR SUBLEASE

6967 South River Gate Drive
Midvale, Utah



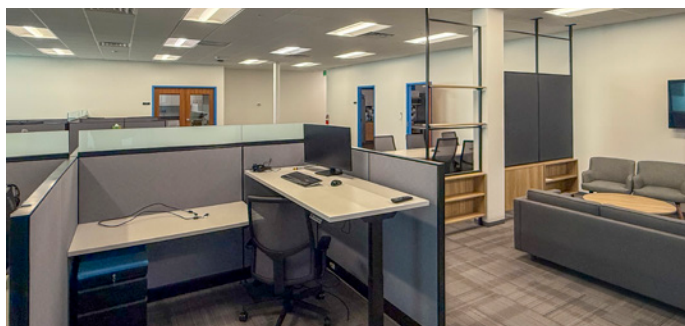
CUSHMAN &
WAKEFIELD



SUITE 100 - 6,196 SF AVAILABLE

Property Highlights

- \$28.00 Full Service
- Plug-N-Play with Furniture Available
- Class A Finishes
- Lab Space
- Walking Distance to Numerous Amenities
- LED 6/30/2029



Contact

JESSE MANGUM

Managing Director

+1 801 303 5547

jesse.mangum@cushwake.com

MELINA MIRAMONTES

Director

+1 801 303 5435

melina.miramontes@cushwake.com

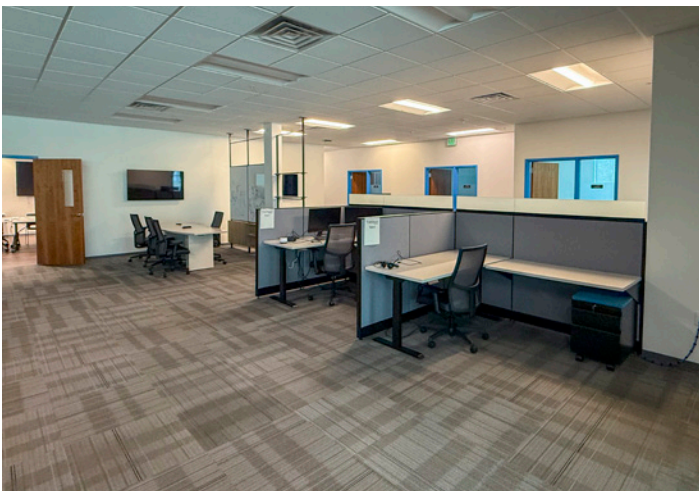
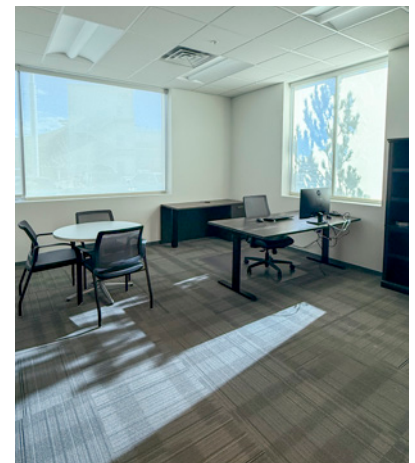
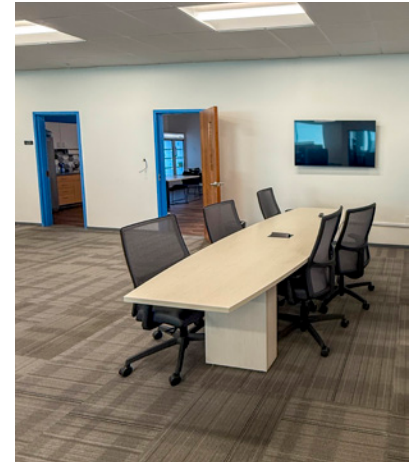
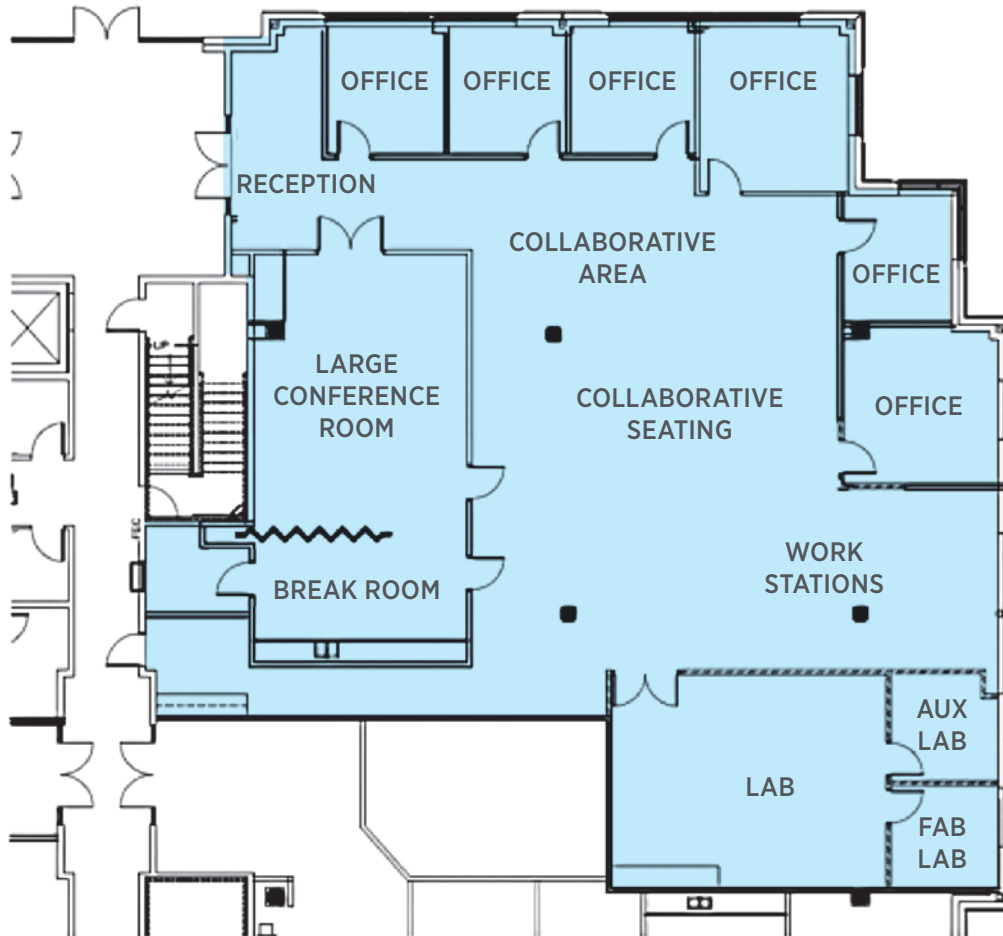
170 South Main Street, Suite 1600

Salt Lake City, UT 84101

+1 801 322 2000

cushmanwakefield.com

Suite 100



Contact

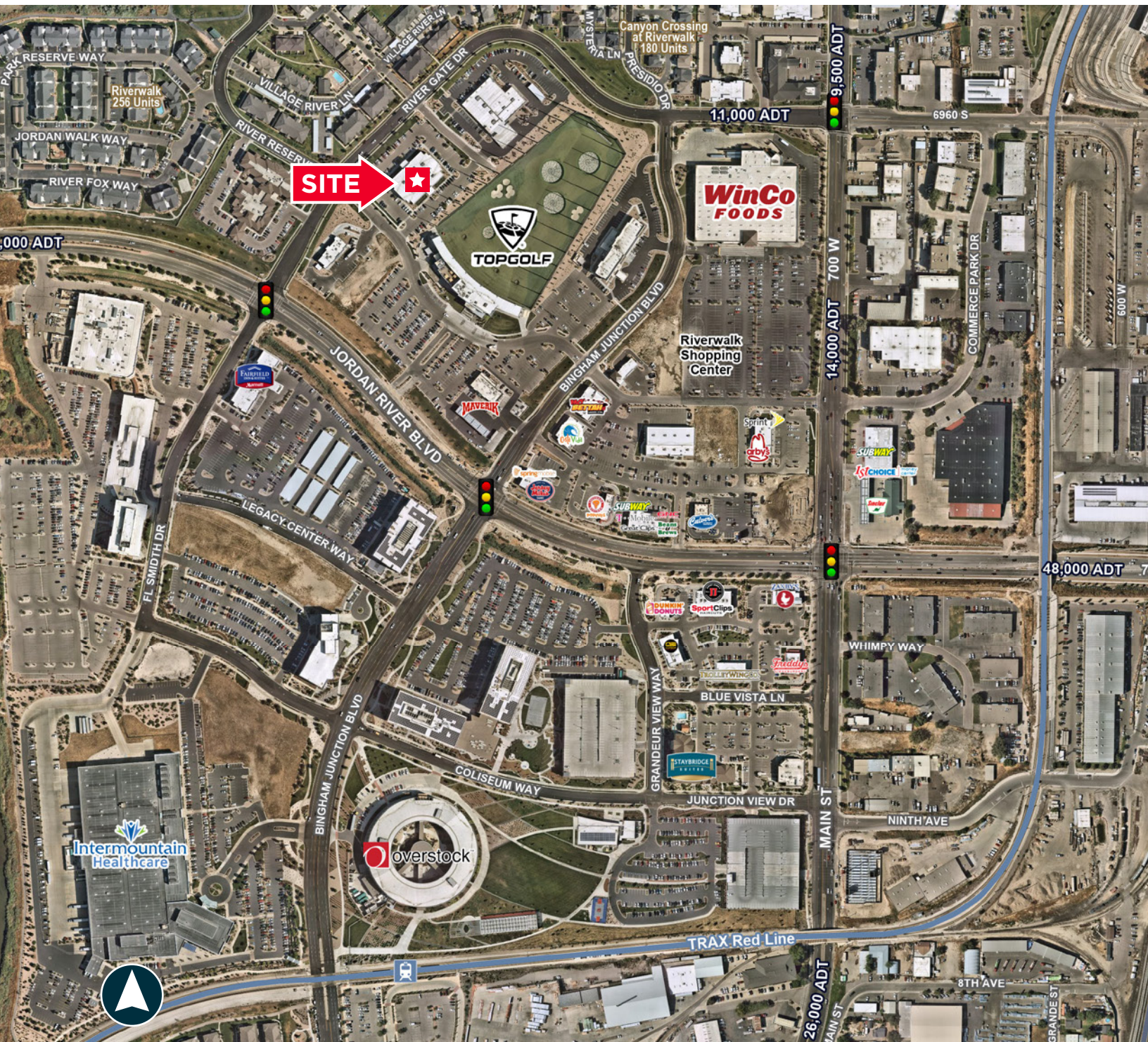
JESSE MANGUM
Managing Director
+1 801 303 5547
jesse.mangum@cushwake.com

MELINA MIRAMONTES
Director
+1 801 303 5435
melina.miramontes@cushwake.com

170 South Main Street, Suite 1600
Salt Lake City, UT 84101
+1 801 322 2000
cushmanwakefield.com

Cushman & Wakefield Copyright 2021. No warranty or representation, express or implied, is made to the accuracy or completeness of the information contained herein, and same is submitted subject to errors, omissions, change of price, rental or other conditions, withdrawal without notice, and to any special listing conditions imposed by the property owner(s). As applicable, we make no representation as to the condition of the property (or properties) in question. (path: G:\SL1\Shared\Apps\Gigas\1 - Projects\Mangum_Jesse\1 - Flyers\6967SouthRiverGateDrive.SUBLEASE)

Location Aerial



Contact

JESSE MANGUM
Managing Director
+1 801 303 5547
jesse.mangum@cushwake.com

MELINA MIRAMONTES
Director
+1 801 303 5435
melina.miramontes@cushwake.com

170 South Main Street, Suite 1600
Salt Lake City, UT 84101
+1 801 322 2000
cushmanwakefield.com

Cushman & Wakefield Copyright 2021. No warranty or representation, express or implied, is made to the accuracy or completeness of the information contained herein, and same is submitted subject to errors, omissions, change of price, rental or other conditions, withdrawal without notice, and to any special listing conditions imposed by the property owner(s). As applicable, we make no representation as to the condition of the property (or properties) in question. (path: G:\SL1\Shared\Apps\Gigas\1 - Projects\Mangum_Jesse\1 - Flyers\6967SouthRiverGateDrive-SUBLEASE)