

FOR LEASE

2,848 SF - 6,586 SF

125% FEE ON QUALIFYING DEALS &
\$50 SHOWING BONUS

LAKEVIEW BUSINESS CENTER

10901-10925 VALLEY VIEW RD
EDEN PRAIRIE, MN



PROPERTY INFORMATION

- NEWLY RENOVATED
- **FREE UNDERGROUND EXECUTIVE PARKING**
- LOCATED ON LAKE SMETANA
- **DIRECT ACCESS TO WALKING TRAIL AROUND LAKE**
- EXCELLENT LOCATION WITH EASY ACCESS TO RESTAURANTS, HOTELS AND SHOPPING

Address 10901-10925 Valley View Rd
Eden Prairie, MN

Lease Rates Negotiable

Building Size 50,000 SF

Available Space	Suite 10907	Suite 10921
	2,419 SF Office	4,611 SF Office
	<u>429 SF Warehouse</u>	<u>1,975 SF Tech</u>
	2,848 SF Total	6,586 SF Total

Year Built 1988

Clear Height 9' - 14'

HVAC Fully air-conditioned

Total Tax/CAM \$5.10

Other Furniture included - Suite 10907

JOHN MCKENNA

Director
+1 612 347 9314
john.mckenna@cushwake.com

DANNY MCNAMARA

Senior Director
+1 952 893 8895
danny.mcnamara@cushwake.com



PROPERTY PHOTOS

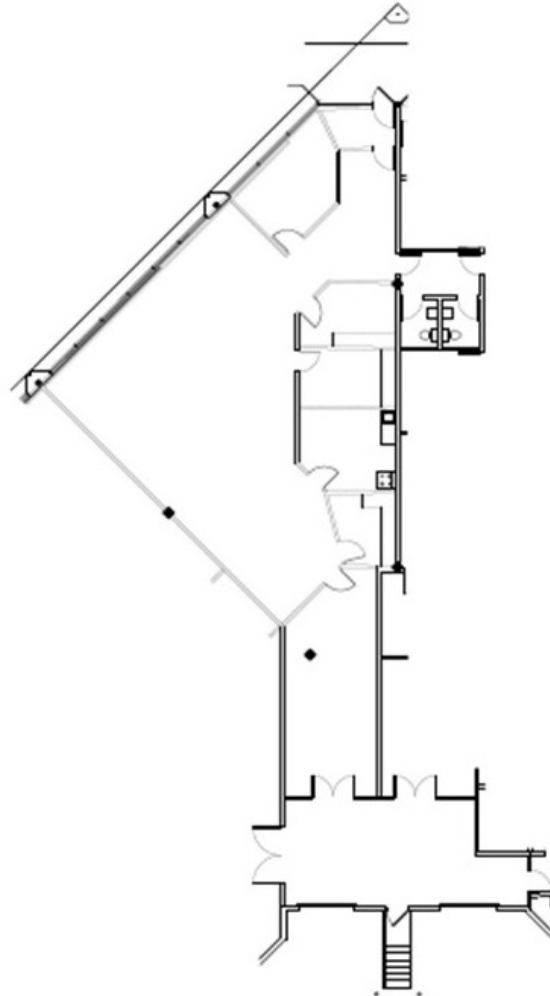


FLOOR PLAN

SUITE 10907

2,419 SF Office
429 SF Warehouse
2,848 SF Total

1 dock



KEY PLAN

NOT TO SCALE



FLOOR PLAN

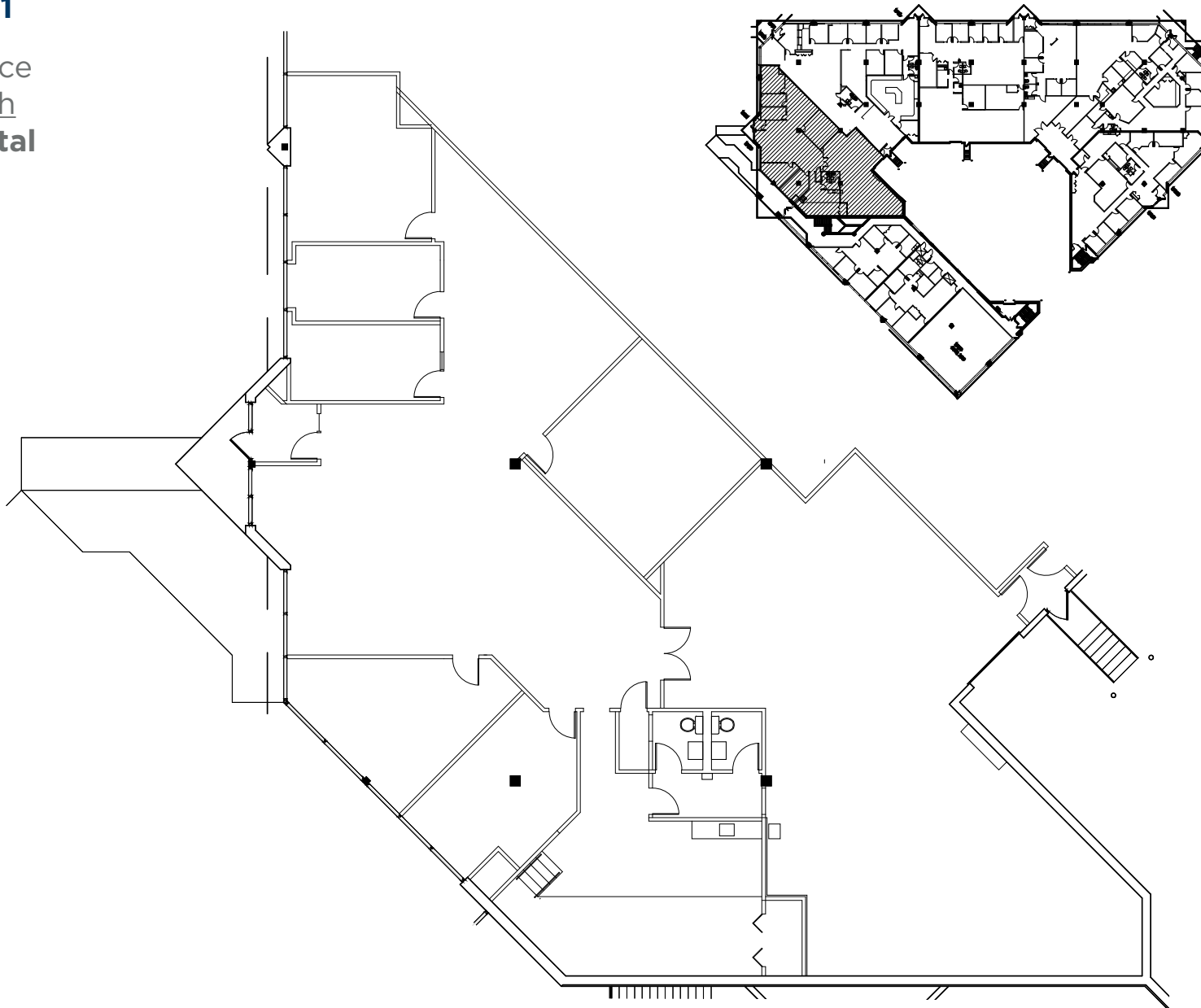
SUITE 10921

4,611 SF Office

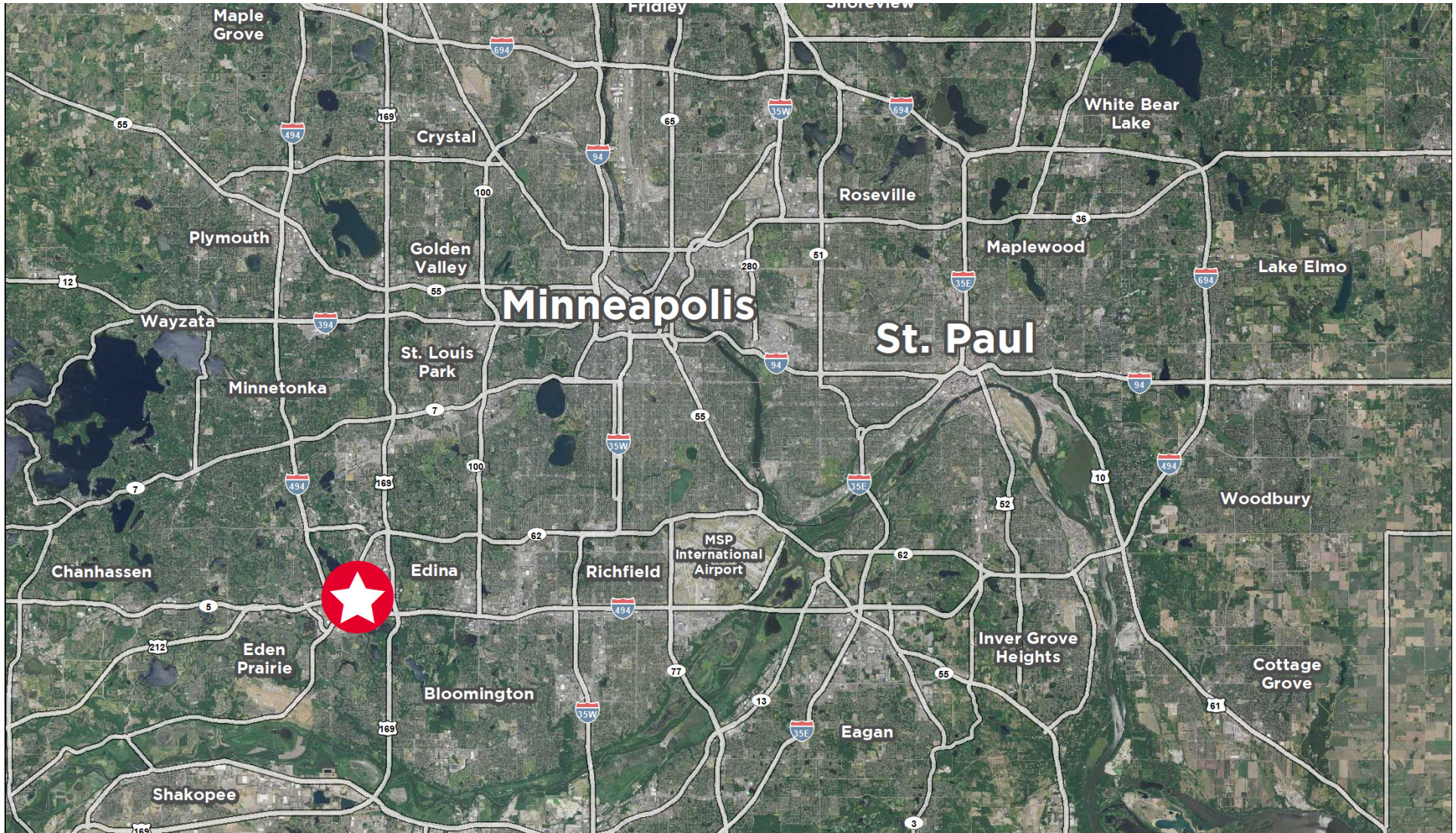
1,975 SF Tech

6,586 SF Total

1 dock







JOHN MCKENNA

Director
+1 612 347 9314
john.mckenna@cushwake.com

DANNY MCNAMARA

Senior Director
+1 952 893 8895
danny.mcnamara@cushwake.com

3500 American Blvd W, Suite 200
Minneapolis, MN 55431
952 831 1000
industrialmn.com