

FOR LEASE

Owned and Operated by



2260 S. Archibald Ave

ONTARIO, CALIFORNIA

UNIT F : ±6,080 SF Industrial Space



**LEASING INFO
& CONTACT**

Chris Pimentel

909 942 4600
chris.pimentel@cushwake.com
CA License #02207362

Tim Pimentel, SIOR

909 942 4647
tim.pimentel@cushwake.com
CA License #01421452

Brice Larson

909 942 4642
brice.larson@cushwake.com
CA License #02056356



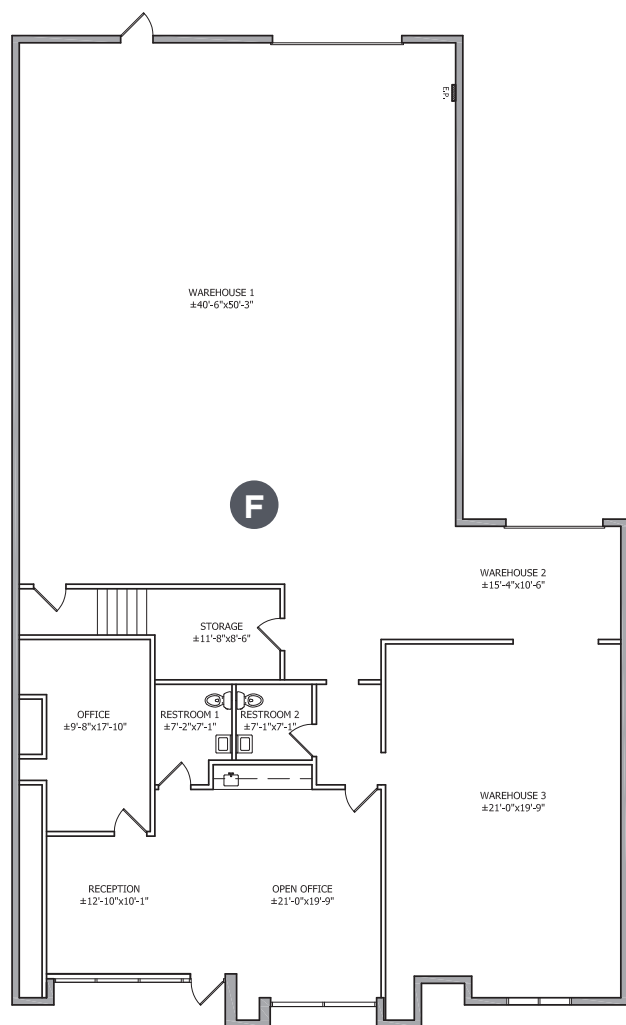
901 Via Piemonte, Suite 200
Ontario, California 91764
www.cushwake.com

This is not an offer or acceptance of an offer to lease space. A lease will only be offered or made in a written agreement signed by landlord. No representation or warranty of any is made by landlord unless set forth in a written definitive lease executed by the landlord.

SITE PLAN

AVAILABLE NOW

2260 S. ARCHIBALD AVE | UNIT F
±6,080 SF

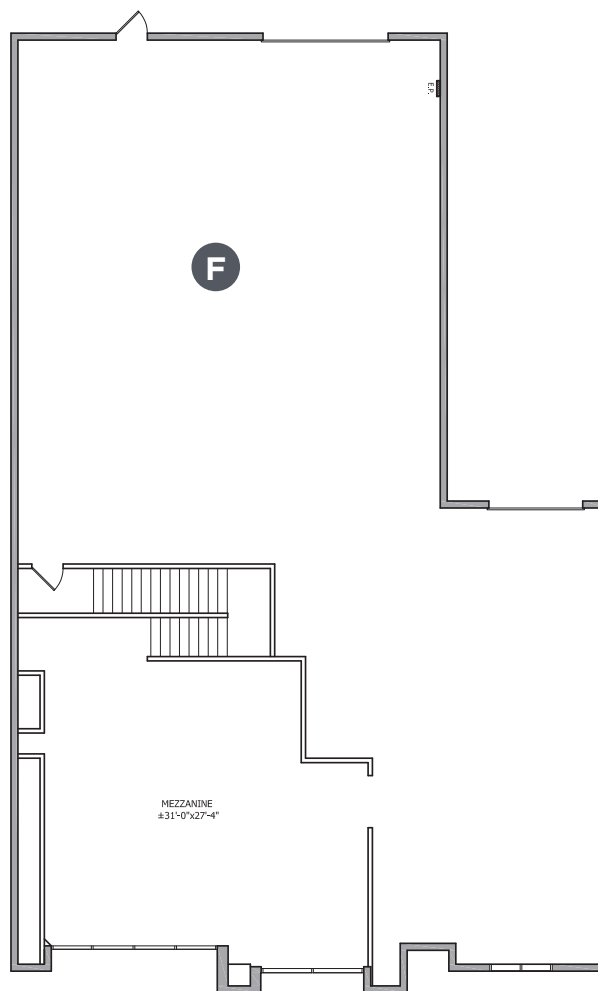


FIRST FLOOR

PROPERTY FEATURES

- » 24' Minimum Clear Height
- » ±6,080 SF
- » +2,236 Office Area
- » Restrooms
- » Fully Sprinklered
- » 1 Dock High / 1 Ground Level Door
- » 200 amp, 120/208v Electrical
- » Excellent Access to SR-60 Freeway

SECOND FLOOR



LEASING INFO & CONTACT

Chris Pimentel
909 942 4600
chris.pimentel@cushwake.com
CA License #02207362

Tim Pimentel, SIOR
909 942 4647
tim.pimentel@cushwake.com
CA License #01421452

Brice Larson
909 942 4642
brice.larson@cushwake.com
CA License #02056356



**CUSHMAN &
WAKEFIELD**

901 Via Piemonte, Suite 200
Ontario, California 91764
www.cushwake.com

This is not an offer or acceptance of an offer to lease space. A lease will only be offered or made in a written agreement signed by landlord. No representation or warranty of any is made by landlord unless set forth in a written definitive lease executed by the landlord.



KEY DISTANCES

SR-60	±0.3 Miles
Ontario International Airport	±1.0 Miles
I-15	±2.2 Miles
I-10	±3.2 Miles
I-215	±16.0 Miles
Downtown LA	±32.0 Miles

