

FOR SUBLEASE

30240 Oak Creek Drive

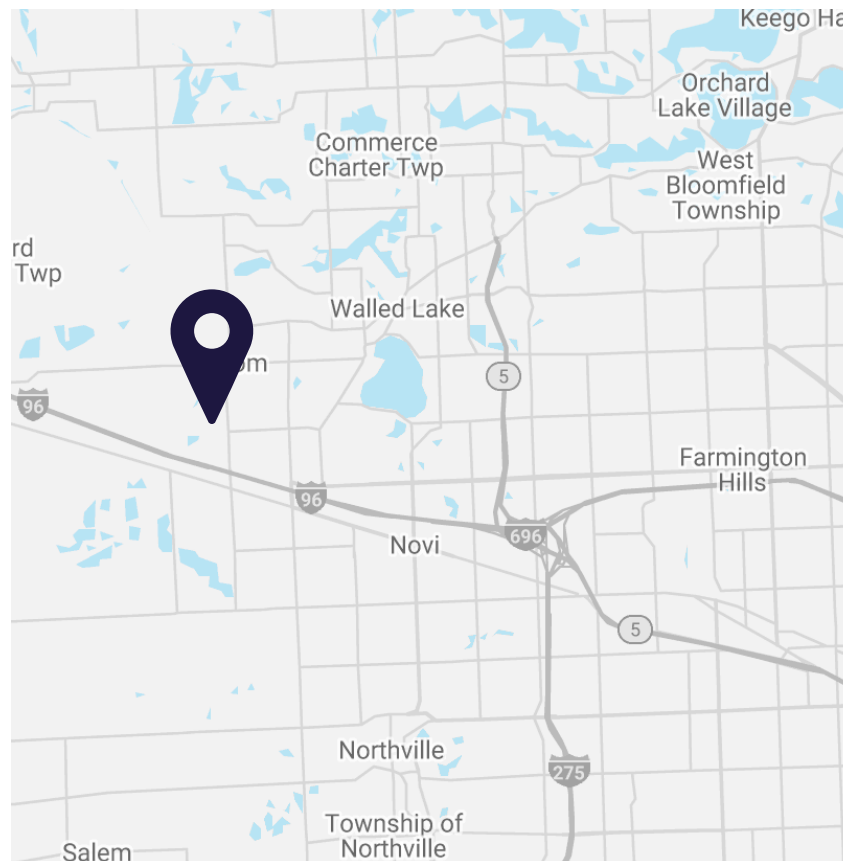
Wixom, Michigan 48393

202,500 SF



Industrial Building Available for Sublease

- 202,500 SF available can be demised to +/-101,250 SF
- Two high image office areas of 9,000 & 13,000 SF (can be reduced)
- (6) docks, (1) (12'x14') grade door
- 45' x 50' column spacing
- 22' clear height, with ESFR sprinklers
- 50% of shop and full warehouse has HVAC
- 2000amp/480V/3P (primary available)
- 22' clear height, w/ ESFR sprinklers
- Existing lease expires 5/31/29, longer or shorter term possible



Contact

Tony Avendt

Executive Director
+1 248 358 6115
tony.avendt@cushwake.com

Garrett Keais

Executive Managing Director
+1 248 358 6112
garrett.keais@cushwake.com



**CUSHMAN &
WAKEFIELD**

cushmanwakefield.com

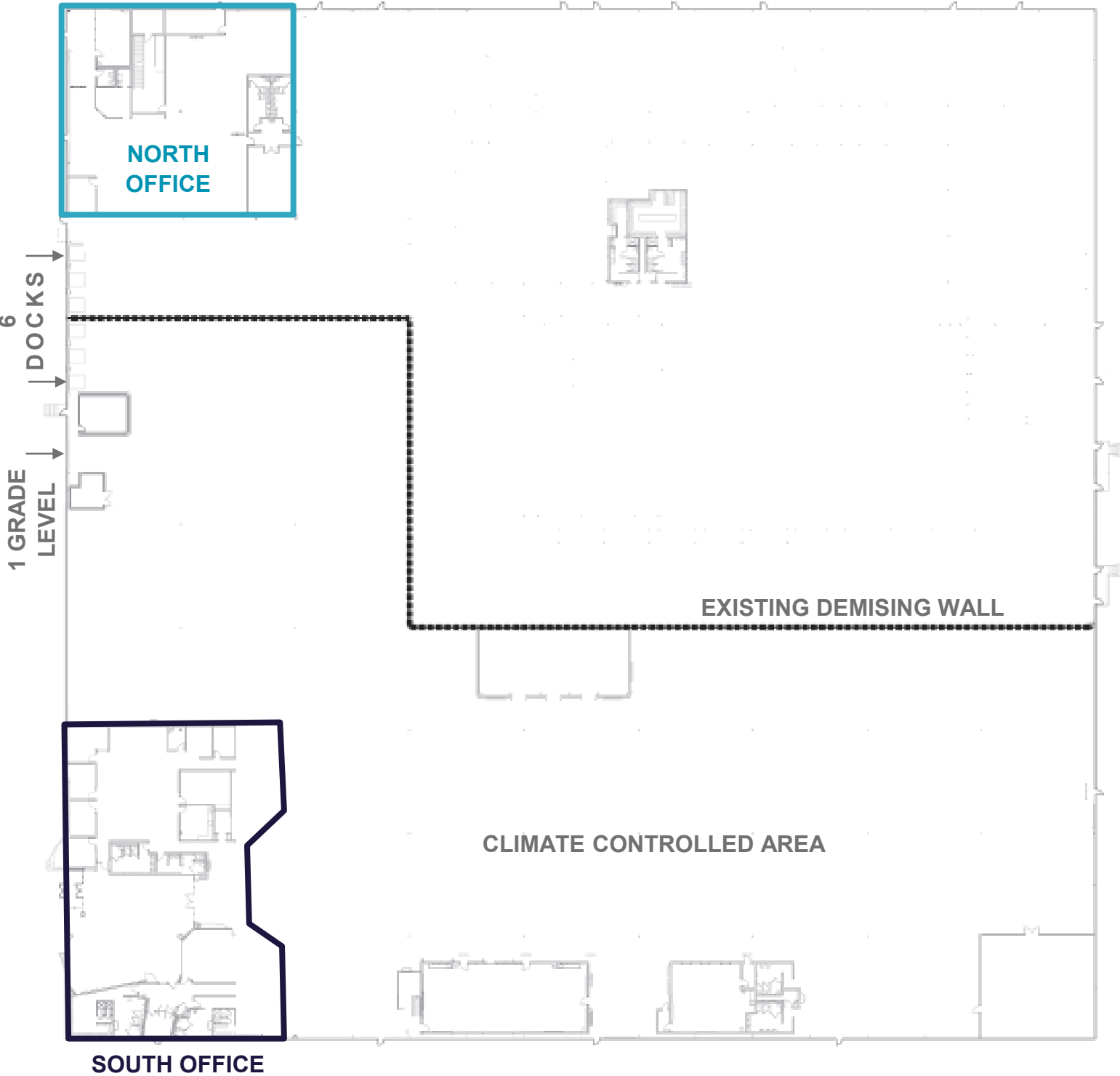
FOR SUBLEASE

30240 Oak Creek Drive

Wixom, Michigan 48393

202,500 SF

FLOOR PLAN



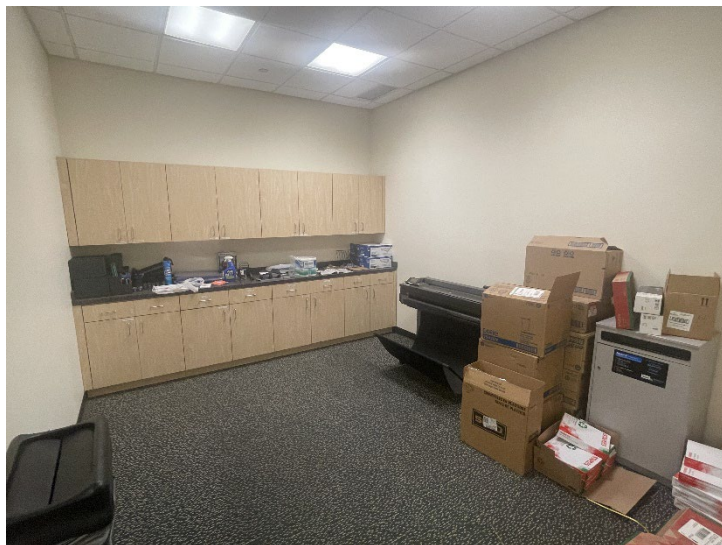
FOR SUBLEASE

30240 Oak Creek Drive

Wixom, Michigan 48393

202,500 SF

Office Photos



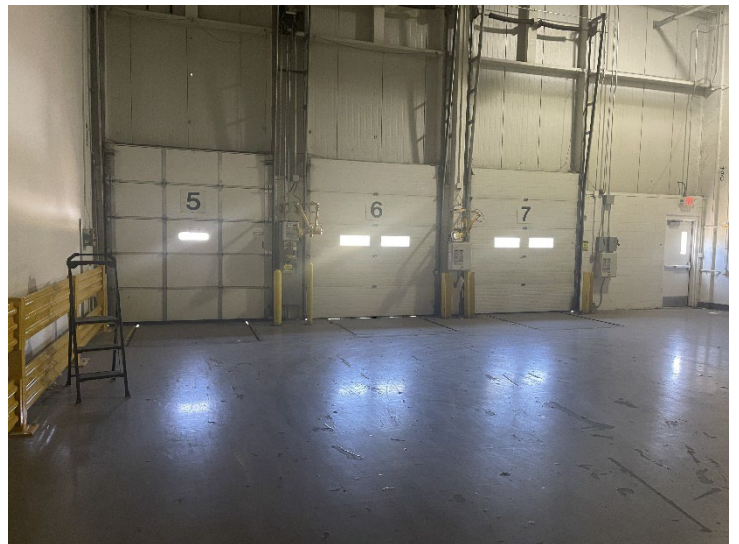
FOR SUBLEASE

30240 Oak Creek Drive

Wixom, Michigan 48393

202,500 SF

Warehouse Photos



30240 Oak Creek Drive

Wixom, Michigan 48393

202,500 SF

GENERAL INFORMATION

Address	30240 Oak Creek Dr, Wixom, MI 48393
Total Area	202,500 SF
Office Area	9,000 & 13,000 SF (can be reduced)
Industrial Area	180,500 SF
Divisible To	+/-101,250 SF
Primary Use	Industrial
Property Class	C
Year Built	1993
Construction Type	Steel
Stories	One (1)
Roof	EPDM

SITE DETAILS

Total Acreage	9.29 acres
Zoning	M-1: Light Industrial
Parcel ID	22-06-400-022
Complex Auto Parking	170 surface spaces
Complex Trailer Parking	N/A
Outside Storage	No
Site Fencing	No
Major Crossroads	Wixom Rd & Pontiac Trail

BUILDING AMENITIES

Ceiling Clearance	22'
Bay Size / Column Spacing	45'x50'
Docks/Wells	Six (6)
Dock Equipment	Levelers, locks, & shelters
Grade Doors	One (1) (12'x14')
Industrial Area HVAC	50% of shop Office has full HVAC
Industrial Area Lighting	LED
Floor Thickness	6"
Floor Drains	N/A
Fire Suppression	ESFR
Power	2000amp/480v/3p
Air Lines	Yes
Lunch/Break Room	Yes
Rail Served	No
Building Expandable	No

PRICING

Sublease Rate	\$7.25/SF NNN
Lease Type	Sublease
Desired Term	Lease expires 5/31/29 (Longer/shorter term possible)
Est. Opex	
Taxes	\$0.62/SF
Insurance	TBD
CAM	\$0.25/SF

LISTING AGENTS

Tony Avendt

Executive Director
+1 248 358 6115
tony.avendt@cushwake.com

Garrett Keais

Executive Managing Director
+1 248 358 6112
garrett.keais@cushwake.com

27777 Franklin Road, Suite 1050
Southfield, Michigan 48034
Main +1 248 358 6100
cushmanwakefield.com



**CUSHMAN &
WAKEFIELD**

cushmanwakefield.com