



**CUSHMAN &
WAKEFIELD**

Commercial Kentucky



FOR LEASE | 19,000 SF AVAILABLE

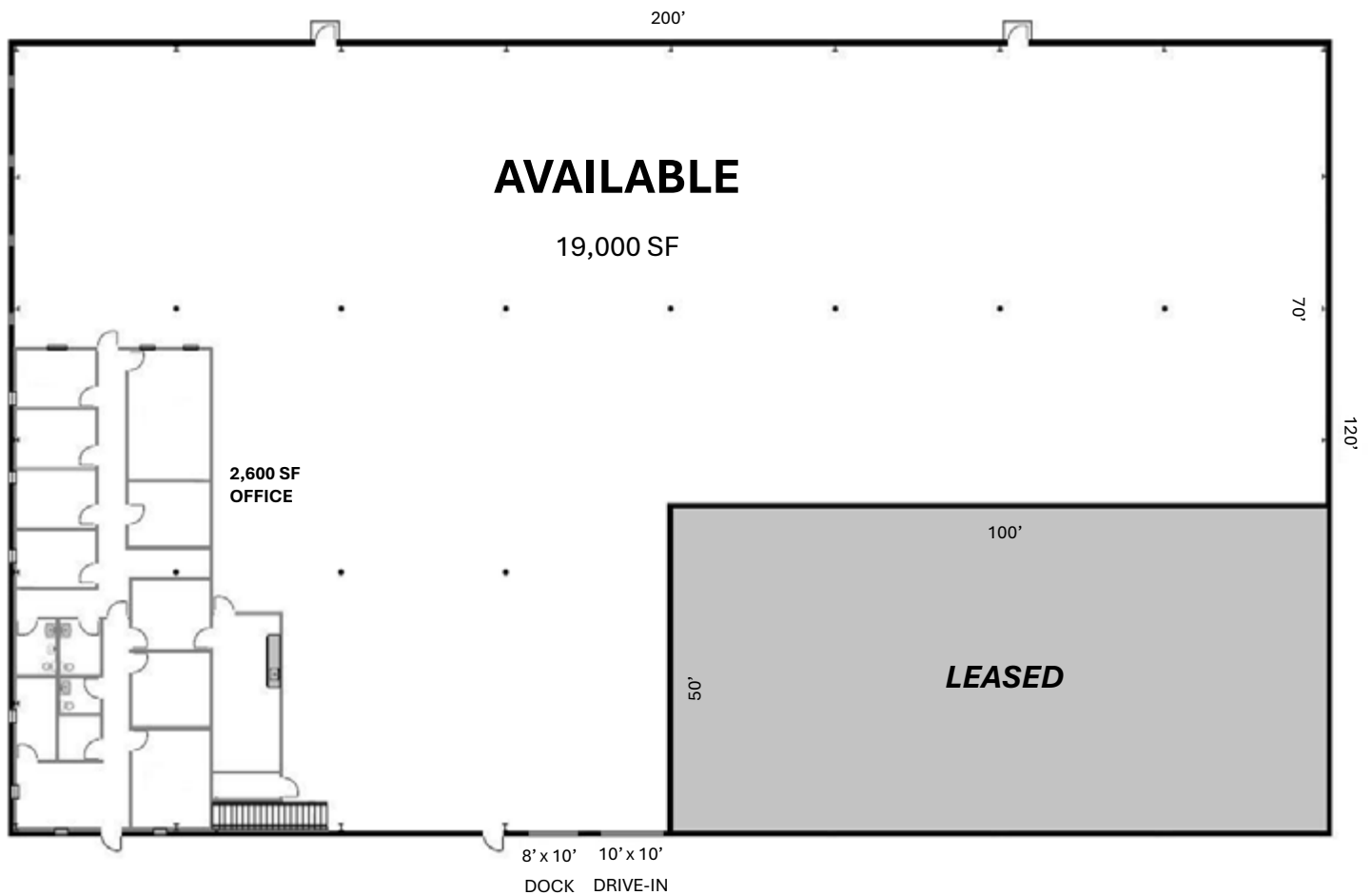
**5680
SHEPHERDSVILLE RD**

Louisville, KY 40228

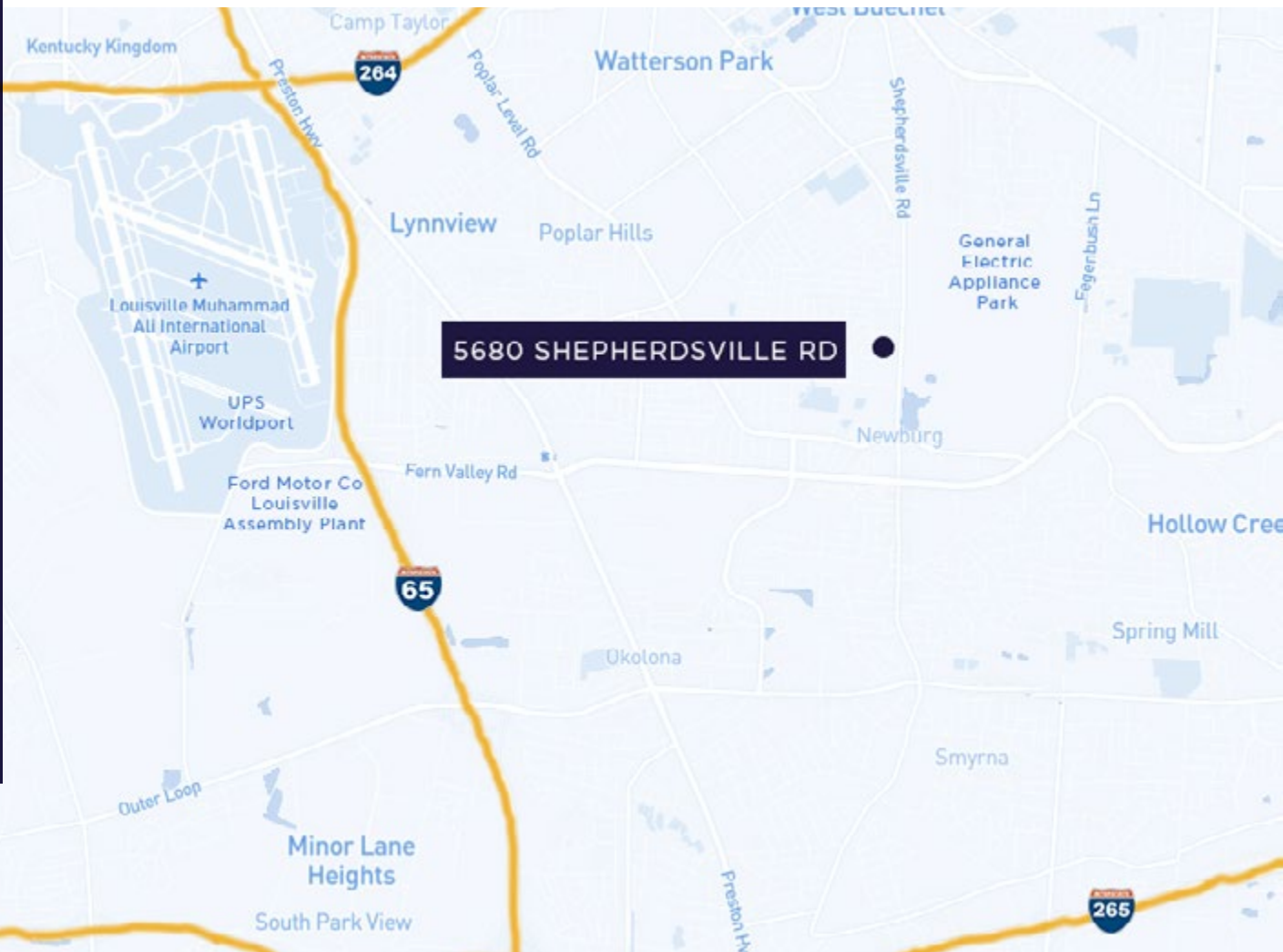
PROPERTY HIGHLIGHTS

Development:	Park Jefferson
Available:	19,000 sf
Office Area:	2,600 sf
Zoning:	M-2
Clear Height:	19' - 22'
Lighting:	LED
Power:	400 amp, 120/208 volt, 3-phase
Dock Doors:	One (1) - 8' x 10' door w/ EOD leveler
Drive-in Doors:	One (1) - 10' x 10' door



FLOOR PLAN



LOCATION MAP



DEMOGRAPHICS

	1 Mile	3 Miles	5 Miles
 Population:	12,005	87,387	215,343
 Employees:	3,399	54,970	108,270

TRAFFIC COUNTS



Shepherdsville Road:
23,754 VPD



CONTACT

GREG CHARMOLI
Senior Director
+1 502 719 3238
gcharmoli@commercialkentucky.com

©2024 Cushman & Wakefield. All rights reserved. The material in this presentation has been prepared solely for information purposes, and is strictly confidential. Any disclosure, use, copying or circulation of this presentation (or the information contained within it) is strictly prohibited, unless you have obtained Cushman & Wakefield's prior written consent. The views expressed in this presentation are the views of the author and do not necessarily reflect the views of Cushman & Wakefield. Neither this presentation nor any part of it shall form the basis of, or be relied upon in connection with any offer, or act as an inducement to enter into any contract or commitment whatsoever. NO REPRESENTATION OR WARRANTY IS GIVEN, EXPRESS OR IMPLIED, AS TO THE ACCURACY OF THE INFORMATION CONTAINED WITHIN THIS PRESENTATION, AND CUSHMAN & WAKEFIELD IS UNDER NO OBLIGATION TO SUBSEQUENTLY CORRECT IT IN THE EVENT OF ERRORS.



Independently Owned & Operated / A Member of the Cushman & Wakefield Alliance