



FOR LEASE

1350 Pear Avenue
Mountain View, California



PROPERTY HIGHLIGHTS

Multi-Tenant Industrial/R&D Spaces Available

Suite C: ±2,000 SF

Suite H/J: ±2,000 SF

- Prominent Shoreline Location
- Adjacent to Retail Center
- Immediate Access to Highway 101

Colin Feichtmeir
Executive Director
P +1 408 615 3443
colin.feichtmeir@cushwake.com
LIC #01298061

300 Santana Row, Fifth Floor
San Jose, CA 95128
main +1 408 615 3400
cushmanwakefield.com

Cushman & Wakefield Copyright 2025. No warranty or representation, express or implied, is made to the accuracy or completeness of the information contained herein, and same is submitted subject to errors, omissions, change of price, rental or other conditions, withdrawal without notice, and to any special listing conditions imposed by the property owner(s). As applicable, we make no representation as to the condition of the property (or properties) in question.



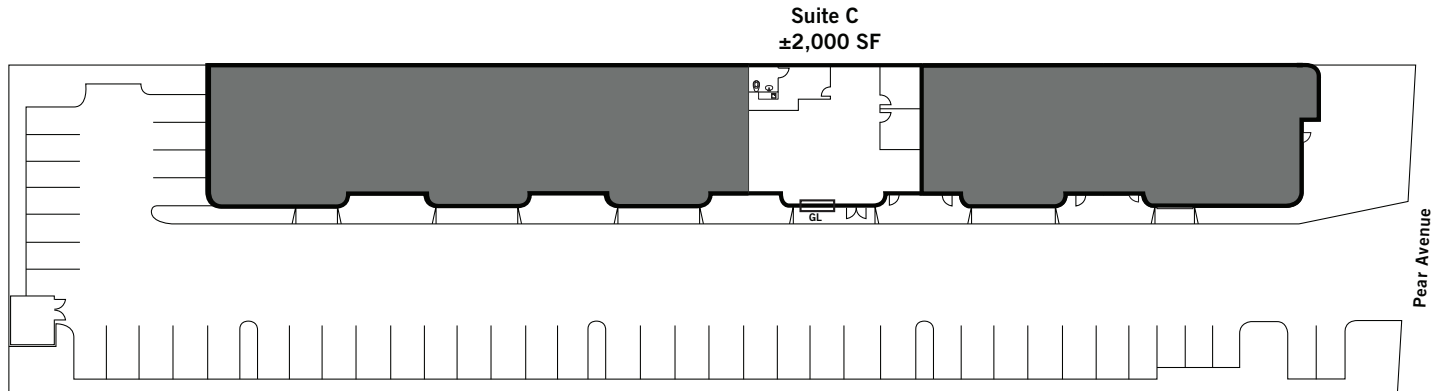
**CUSHMAN &
WAKEFIELD**

FOR LEASE

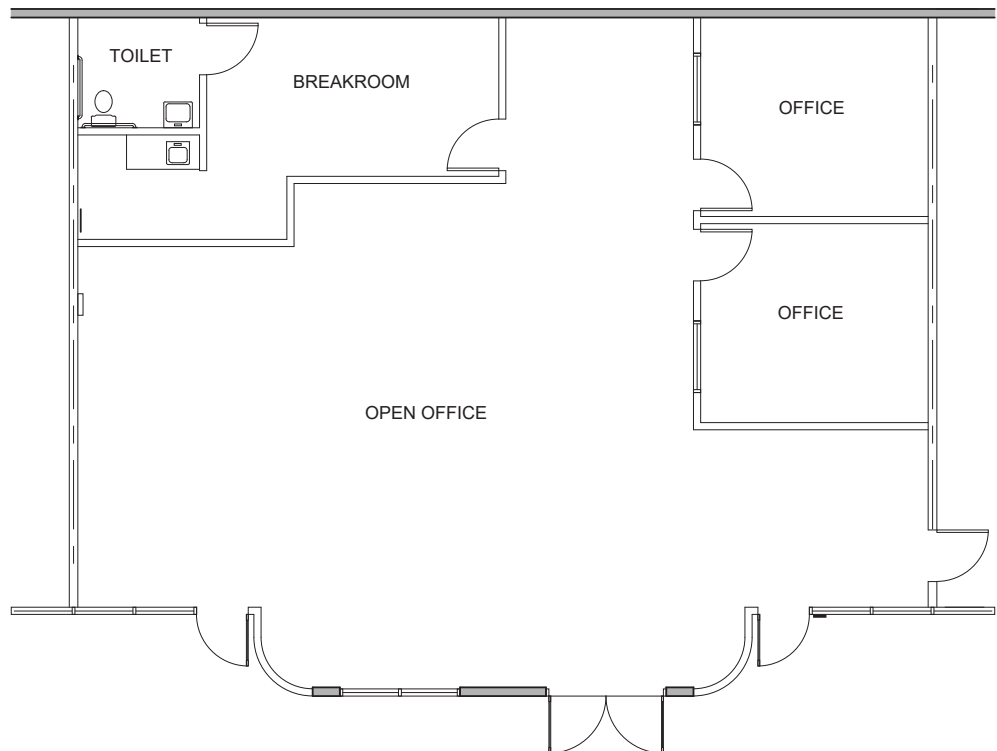
1350 Pear Avenue
Mountain View, California

FLOOR PLAN

Suite C | $\pm 2,000$ SF



- 100% HVAC
- 100% Drop Ceiling
- Grade Level Access



Colin Feichtmeir
Executive Director
P +1 408 615 3443
colin.feichtmeir@cushwake.com
LIC #01298061

300 Santana Row, Fifth Floor
San Jose, CA 95128
main +1 408 615 3400
cushmanwakefield.com



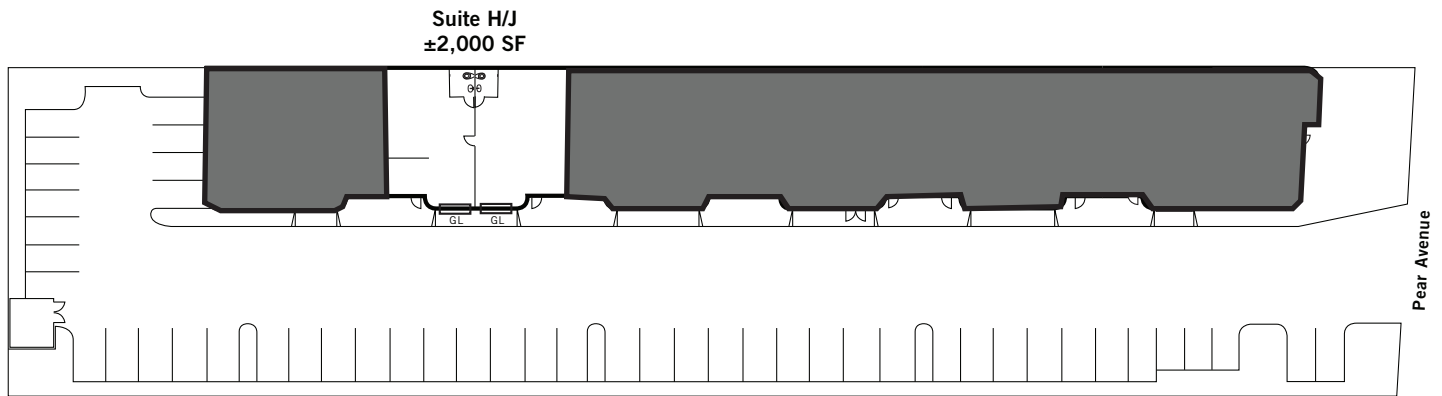
**CUSHMAN &
WAKEFIELD**

FOR LEASE

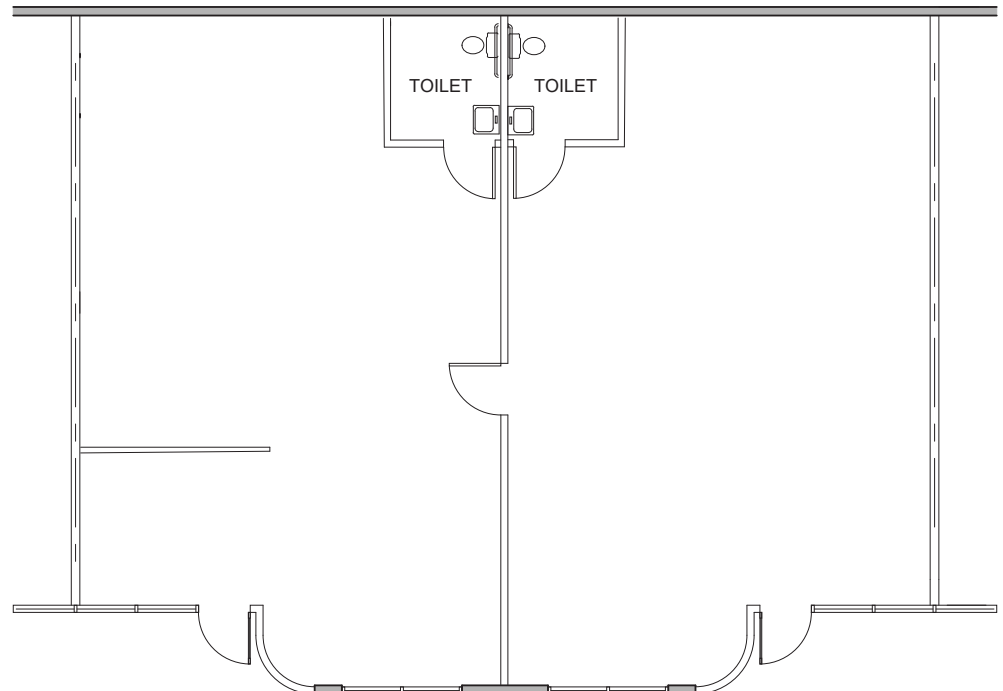
1350 Pear Avenue
Mountain View, California

FLOOR PLAN

Suite H/J | $\pm 2,000$ SF



- 100% HVAC
- Open Ceiling
- 2 Grade Level Doors



Colin Feichtmeir
Executive Director
P +1 408 615 3443
colin.feichtmeir@cushwake.com
LIC #01298061

300 Santana Row, Fifth Floor
San Jose, CA 95128
main +1 408 615 3400
cushmanwakefield.com



FOR LEASE

1350 Pear Avenue
Mountain View, California

LOCATION MAP



Colin Feichtmeir
Executive Director
P +1 408 615 3443
colin.feichtmeir@cushwake.com
LIC #01298061

300 Santana Row, Fifth Floor
San Jose, CA 95128
main +1 408 615 3400
cushmanwakefield.com