



CITY CENTRE

175 EAST 400 SOUTH • SALT LAKE CITY, UTAH 84111



CUSHMAN &
WAKEFIELD

4TH FLOOR COMMON PATIO AREA

- Multiple Seating Options
- Downtown Views
- Shade

Several large, open-air, collaborative work spaces located inside and outside the building with a variety of seating options.

CITYCENTRE

175 EAST 400 SOUTH
SALT LAKE CITY, UTAH 84111

CLASS "A" OFFICE SPACE
IN SALT LAKE CITY'S CENTRAL BUSINESS DISTRICT

WORK-LIFE RE-IMAGINED

- 257,000 SF
- 10 stories
- Large and efficient floor plates, attractive window line and generous deck spaces
- Signage opportunity for two-floor tenant

OUTDOOR WORK/PLAY SPACE

- Fire Pit
- Ping Pong Table
- Cornhole Game



CITY CENTRE

CLASS "A" OFFICE SPACE

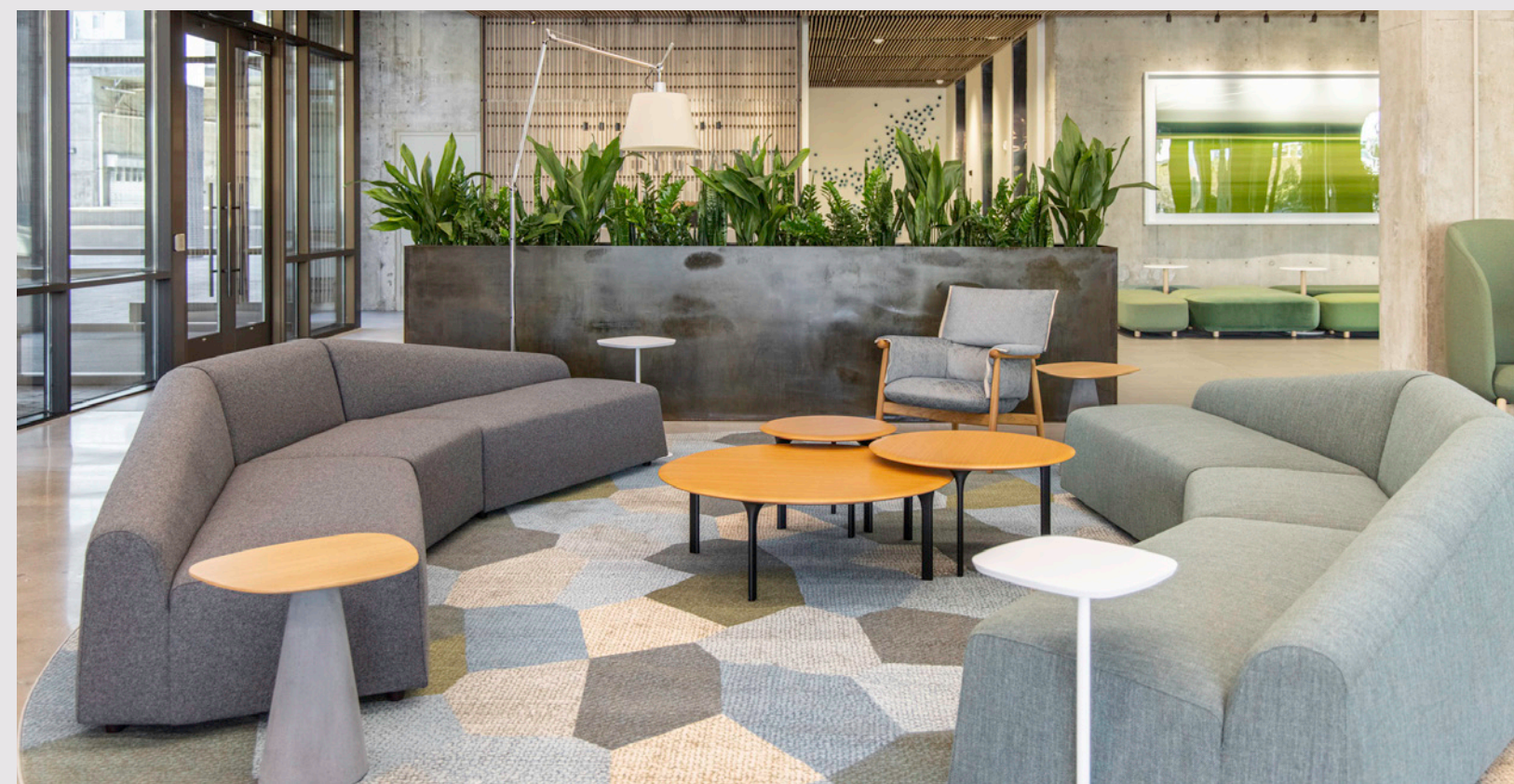
AMENITIES

- Modern office alternative workspaces, common conference rooms and tenant lounge
- Large lobby with sitting area
- Tenant courtyard with fire pit
- Large, redesigned deck space with abundant seating
- On-site surface and covered parking available
- Secured Bicycle Room
- On-site Security
- On-site Gym and Fitness Club (Planet Fitness)



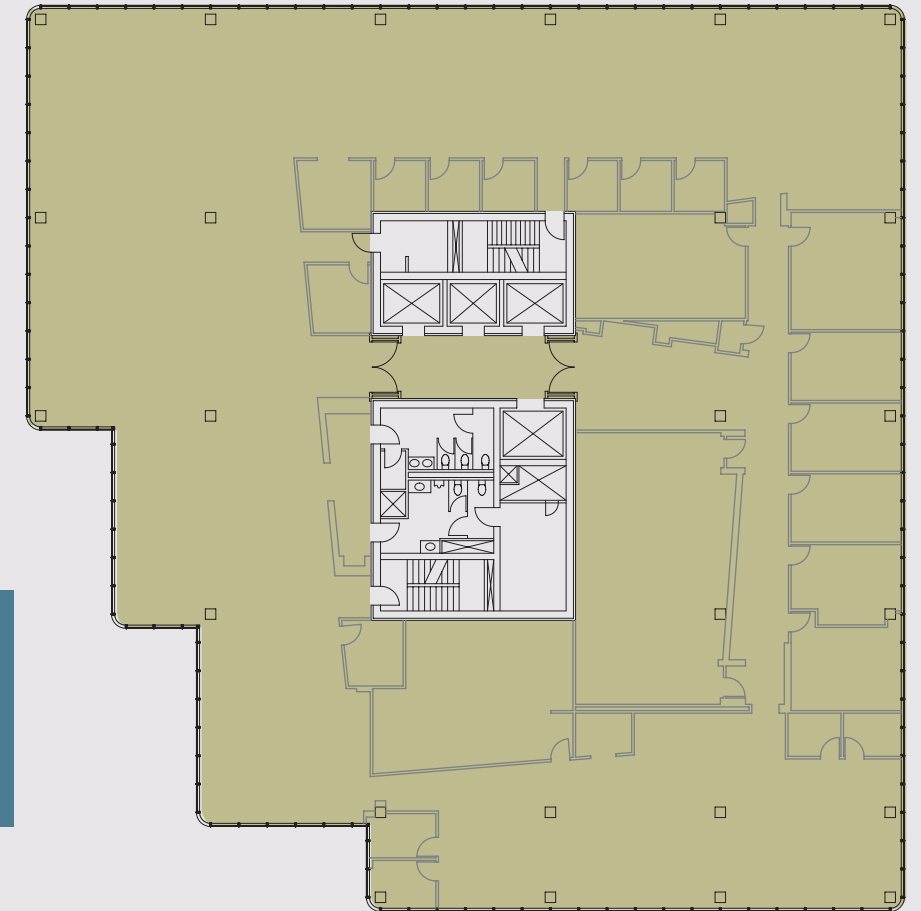
CONFERENCE ROOMS

- No-Cost Use for Tenants
- 6 and 14 Seat Capacity
- TV Screen
- Audio Conferencing

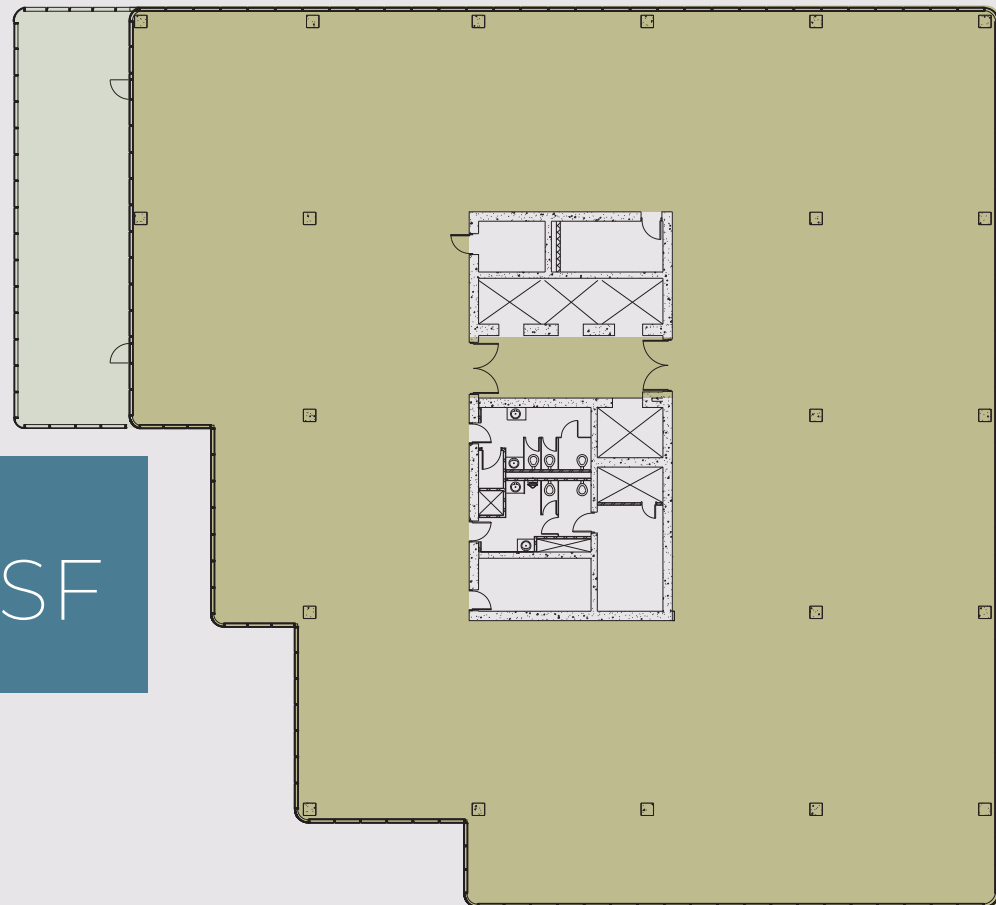




SUITE 500
 20,509 RSF
 Exclusive Patio



SUITE 700
 18,436 RSF



SUITE 600
 19,754 RSF
 Exclusive Patio



BIG-BLOCK OPPORTUNITY
 THREE FLOORS / ~58,000 SF OF
 CONTIGUOUS SPACE

CITYCENTRE

CLASS "A" OFFICE SPACE

CONVENIENT ACCESS

- Nearby UTA Trax stations
- Main bus routes
- Salt Lake City Library
- Federal and State Courthouses



70+

RESTAURANTS WITHIN WALKING DISTANCE

2

TRAX STATIONS WITHIN THREE BLOCKS

18+

BANKS WITHIN WALKING DISTANCE

3

BLOCKS TO THE NEW ECCLES THEATRE

4

BLOCKS TO CITY CREEKS RETAIL CENTER

11

MINUTES TO SALT LAKE CITY INTERNATIONAL AIRPORT

CITYCENTRE

EXIT

MARKETED BY

DANA BAIRD, CCIM
Executive Managing Director
801 303 5526
dana.baird@cushwake.com

MIKE RICHMOND
Executive Managing Director
801 303 5434
mike.richmond@cushwake.com

HANNAH KING
Associate
801 303 5440
hannah.king1@cushwake.com



**CUSHMAN &
WAKEFIELD**