

**FOR LEASE**

# 6847 ASHFIELD DRIVE

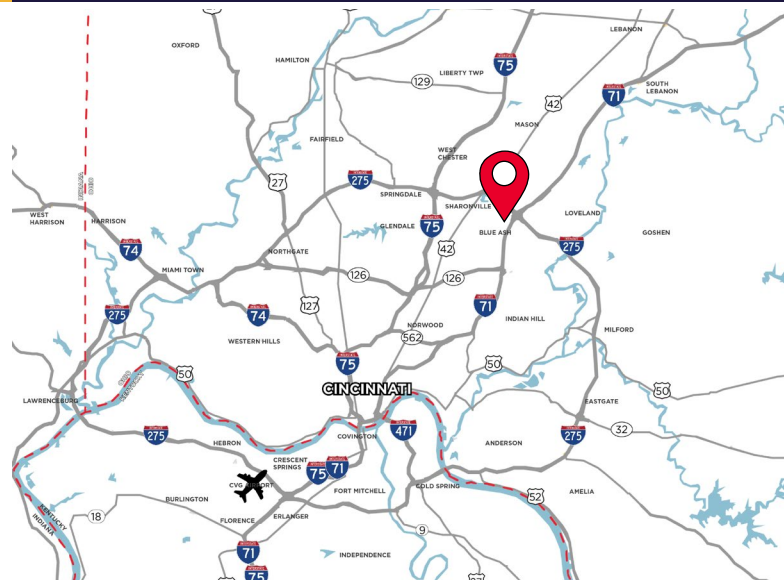
BLUE ASH, OH 45242



**OFFICE/WAREHOUSE**

**LEASE RATE: \$9.95 GROSS**

- 2,960 SF Total Available
- 1,200 SF Office
- 1,760 SF Warehouse
- 1 (8' x 8') Dock Door



**For more information, contact:**

**LINDSAY HARTMANN**  
+1 513 322 0898  
lindsay.hartmann@cushwake.com

**TOM MCCORMICK**  
+1 513 763 3025  
tom.mccormick@cushwake.com

201 E. Fourth Street, Suite 1800  
Cincinnati, OH 45202  
P: +1 513 421 4884  
cushmanwakefield.com



**FOR LEASE**

# 6847 ASHFIELD DRIVE

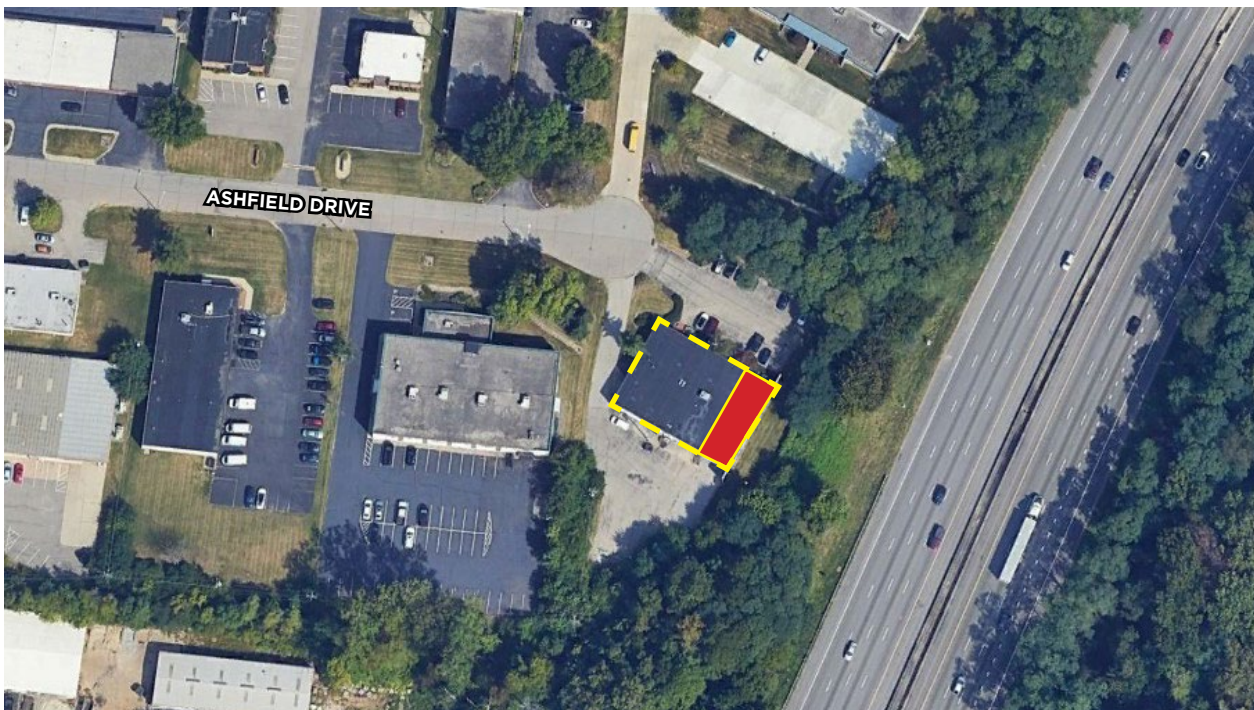
BLUE ASH, OH 45242



LOCATION	Blue Ash, OH
AVAILABLE SIZE	2,960 SF
WAREHOUSE SIZE	1,760 SF
OFFICE SIZE	1,200 SF
YEAR BUILT	1978
ZONING	M-4
CLEAR HEIGHT	12.5'
CONSTRUCTION	Masonry

DOCKS	1 (8' x 8') Dock Door
ROOF	Rubber Membrane
ELECTRIC	200 amps, 280V, 3 Phase
UTILITIES	
ELECTRIC	<a href="http://www.duke-energy.com">www.duke-energy.com</a>
GAS	<a href="http://www.duke-energy.com">www.duke-energy.com</a>
WATER	<a href="http://www.cincinnati-oh.gov.com">www.cincinnati-oh.gov.com</a>
SEWER	<a href="http://www.cincinnati-oh.gov.com">www.cincinnati-oh.gov.com</a>

## AERIAL



**FOR LEASE**

**6847 ASHFIELD DRIVE**

BLUE ASH, OH 45242



## PHOTOS





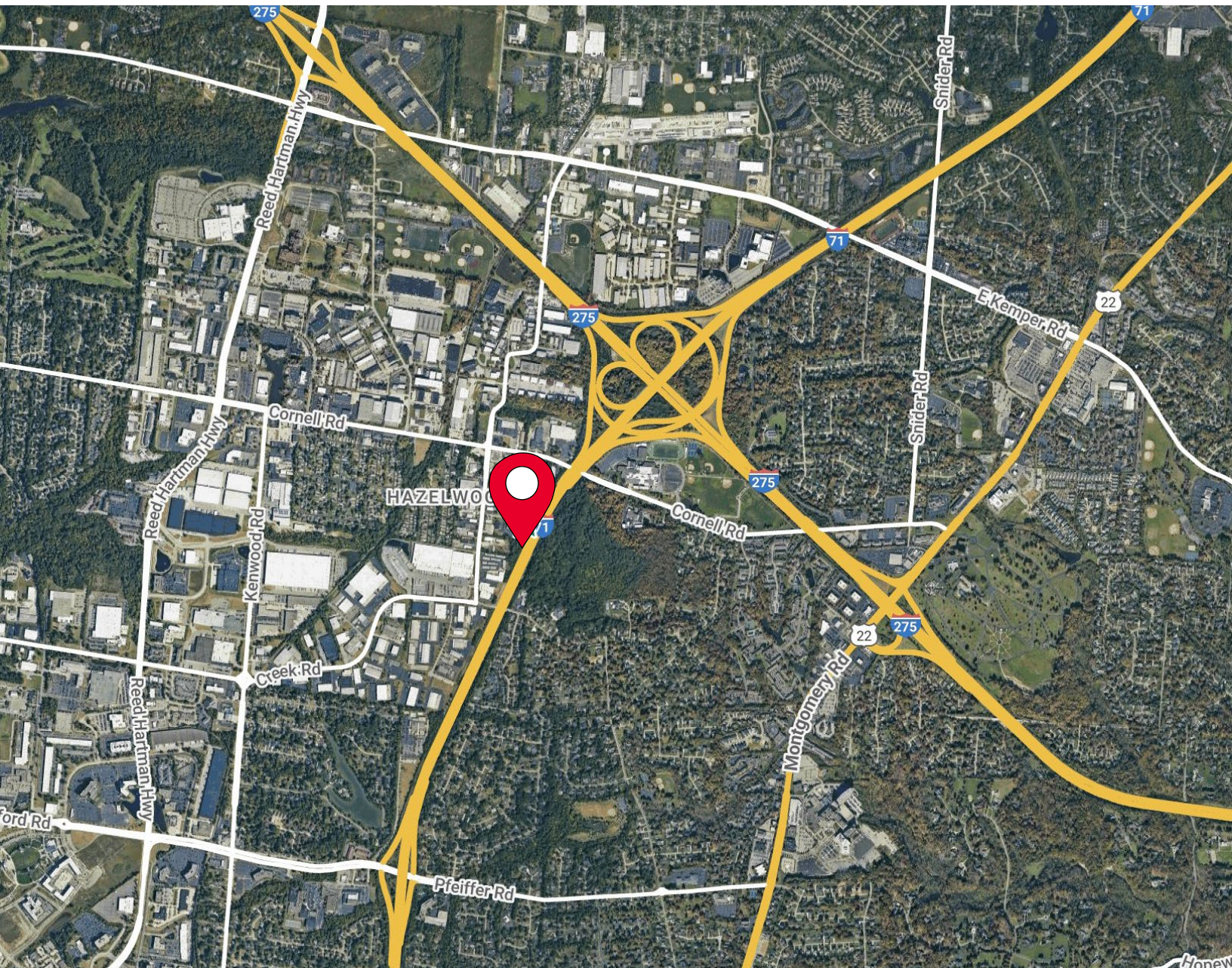
**FOR LEASE**

# 6847 ASHFIELD DRIVE

BLUE ASH, OH 45242



## AERIAL LOCATION



**For more information, contact:**

**LINDSAY HARTMANN**  
+1 513 322 0898

[lindsay.hartmann@cushwake.com](mailto:lindsay.hartmann@cushwake.com)

**TOM MCCORMICK**  
+1 513 763 3025

[tom.mccormick@cushwake.com](mailto:tom.mccormick@cushwake.com)

201 E. Fourth Street, Suite 1800  
Cincinnati, OH 45202  
P: +1 513 421 4884  
[cushmanwakefield.com](http://cushmanwakefield.com)

©2024 Cushman & Wakefield. All rights reserved. The information contained in this communication is strictly confidential. This information has been obtained from sources believed to be reliable but has not been verified. NO WARRANTY OR REPRESENTATION, EXPRESS OR IMPLIED, IS MADE AS TO THE CONDITION OF THE PROPERTY (OR PROPERTIES) REFERENCED HEREIN OR AS TO THE ACCURACY OR COMPLETENESS OF THE INFORMATION CONTAINED HEREIN, AND SAME IS SUBMITTED SUBJECT TO ERRORS, OMISSIONS, CHANGE OF PRICE, RENTAL OR OTHER CONDITIONS, WITHDRAWAL WITHOUT NOTICE, AND TO ANY SPECIAL LISTING CONDITIONS IMPOSED BY THE PROPERTY OWNER(S). ANY PROJECTIONS, OPINIONS OR ESTIMATES ARE SUBJECT TO UNCERTAINTY AND DO NOT SIGNIFY CURRENT OR FUTURE PROPERTY PERFORMANCE.