



**CUSHMAN &  
WAKEFIELD**

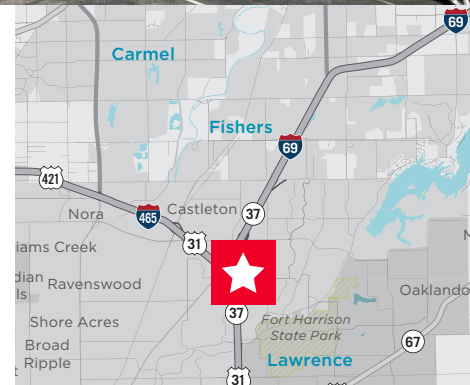
FOR LEASE

**7950 North Shadeland**  
Indianapolis, IN 46250



## Property Highlights

- Single-story professional building with to-your-door parking and exterior backlit signage
- Prominently located in the Northeast submarket via I-465 and I-69 at the 82nd Street interchange across from Community Hospital
- Two medical suites available consisting of 2,460 sf and 3,920 sf
- Larger suite was a former medical practice that outgrew the building
- Smaller suite was a former dental practice the medical practice expanded into
- Rental rate is \$23.00/SF plus janitorial & utilities



For more information, contact:

**Darrin L. Boyd, SIOR, CCIM**  
+1 317 590 8490  
darrin.boyd@cushwake.com

**David A. Moore, SIOR, CCIM**  
+1 317 690 0617  
david.moore@cushwake.com

One American Square, Suite 1800  
Indianapolis, IN 46282  
+1 317 639 0515

IndyOfficeSpace.com  
cushmanwakefield.com

Cushman & Wakefield Copyright 2022. No warranty or representation, express or implied, is made to the accuracy or completeness of the information contained herein, and same is submitted subject to errors, omissions, change of price, rental or other conditions, withdrawal without notice, and to any special listing conditions imposed by the property owner(s). As applicable, we make no representation as to the condition of the property (or properties) in question.



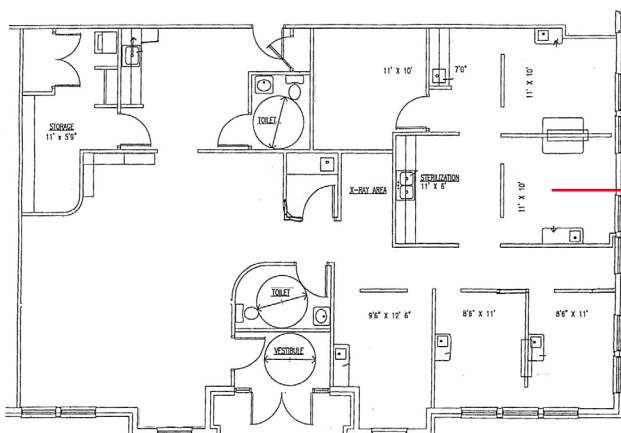
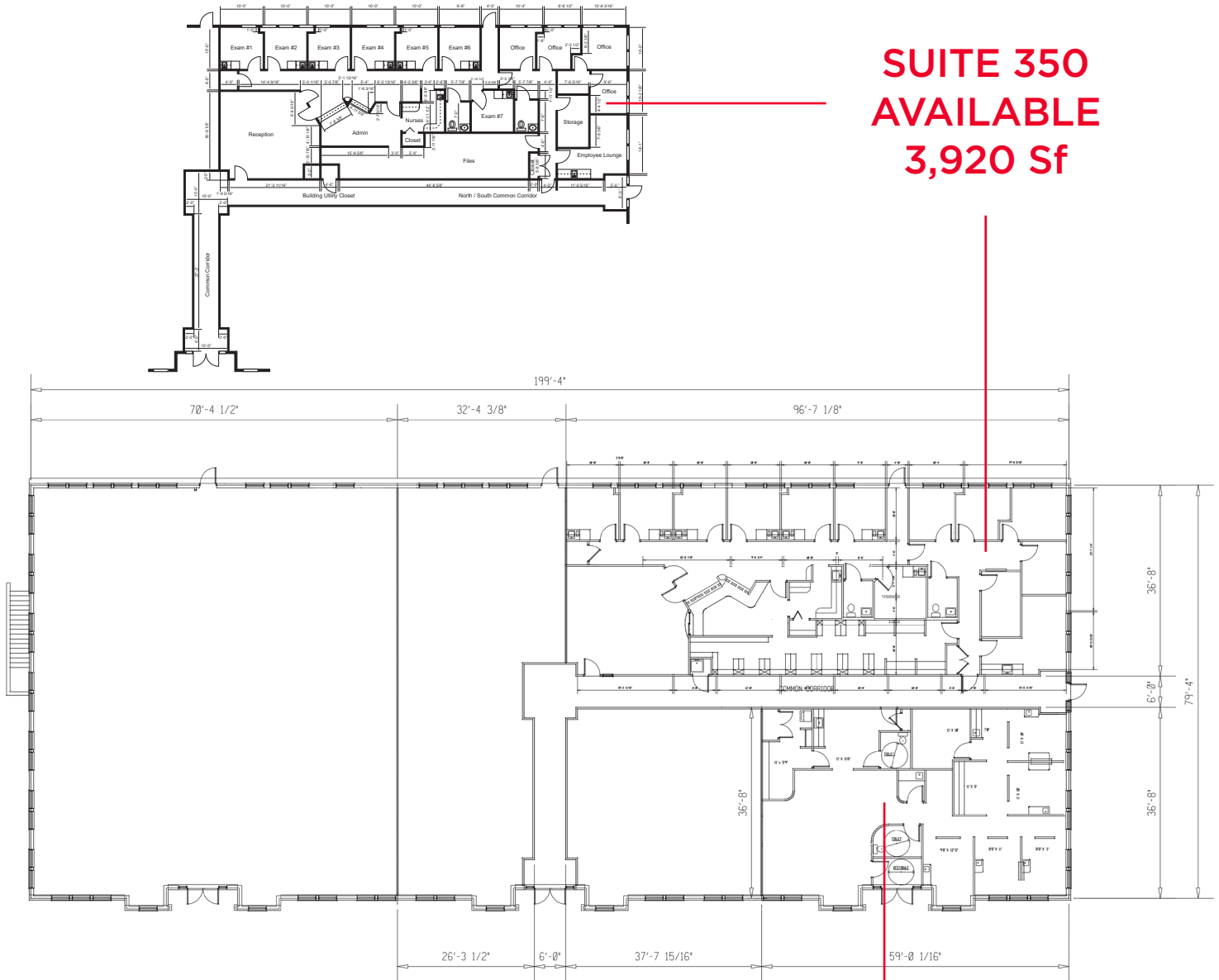
**CUSHMAN &  
WAKEFIELD**

FOR LEASE

**7950 North Shadeland**

Indianapolis, IN 46250

**SUITE 350  
AVAILABLE  
3,920 Sf**



**SUITE 400  
AVAILABLE  
2,406 Sf**





**CUSHMAN &  
WAKEFIELD**

FOR LEASE

**7950 North Shadeland**  
Indianapolis, IN 46250

