



FOR LEASE | OFFICE SPACE

Asking Rent: \$1,500 Per Month | Office Area: 750 SF

1478 SEAGULL
ROAD
UNIT 1

London, ON N6H 5L9



**CUSHMAN &
WAKEFIELD**

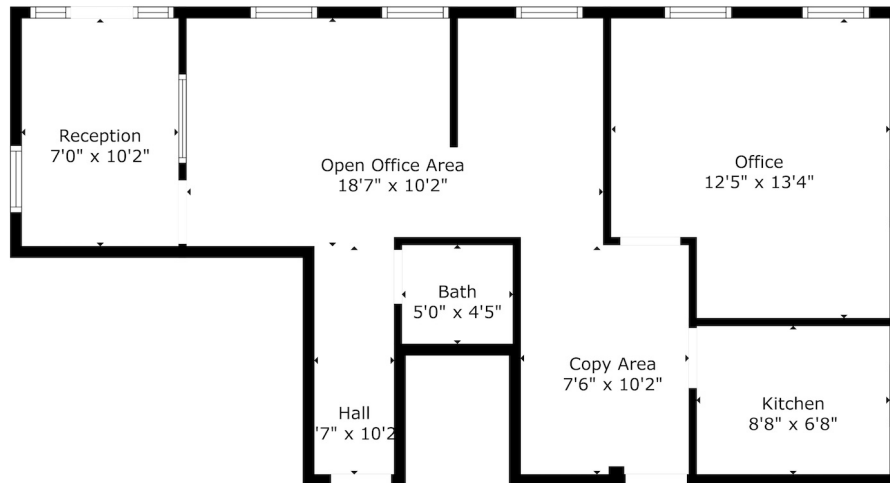
Southwestern Ontario
Littlewood

ABOUT THE PROPERTY

Exceptional small office space in Hyde Park industrial area. This rare and unique office space offers a well-designed layout, including a reception area, private office, open work area, kitchenette, copier station, and bathroom.

UNIT	AVAILABLE SPACE	ASKING RENT
1	750 SF	\$1,500 per month + HST*
*Inclusive of property taxes and utilities		

- **Zoning:** LI1(3)
- **Parking:** Free on-site parking



JAMESON LAKES

Sales Representative

519 438 8548

jameson.lake@cushwakeswo.com

CUSHMAN & WAKEFIELD SOUTHWESTERN ONTARIO

850 Medway Park Dr, Suite 201

London, Ontario N6G 5C6

www.cushwakeswo.com



CUSHMAN & WAKEFIELD

Southwestern Ontario

©2025 Cushman & Wakefield Southwestern Ontario, Real Estate Brokerage, Independently Owned and Operated. A Member of the Cushman & Wakefield Alliance. This information has been obtained from sources believed to be reliable but has not been verified. No warranty or representation, express or implied, is made as to the condition of the property (or properties) referenced herein or as to the accuracy or completeness of the information contained herein, and same is submitted subject to errors, omissions, change of price, rental or other conditions, withdrawal without notice, and to any special listing conditions imposed by the property owner(s). Any projections, opinions or estimates are subject to uncertainty and do not signify current or future property performance. All rights reserved.