



8953

E STARFIRE
AVENUE #103
PHOENIX, AZ

±25,983 SF
AVAILABLE FOR LEASE



BUILDING FEATURES

AVAILABLE SF
±25,983 SF

OFFICE SF
±2,000 SF

CLEAR HEIGHT
30'



AVAILABLE SF ±25,983 SF



OFFICE SF ±2,000 SF



CLEAR HEIGHT 30'



DOCK DOORS 6 Dock Doors



GRADE LEVEL DOORS 2



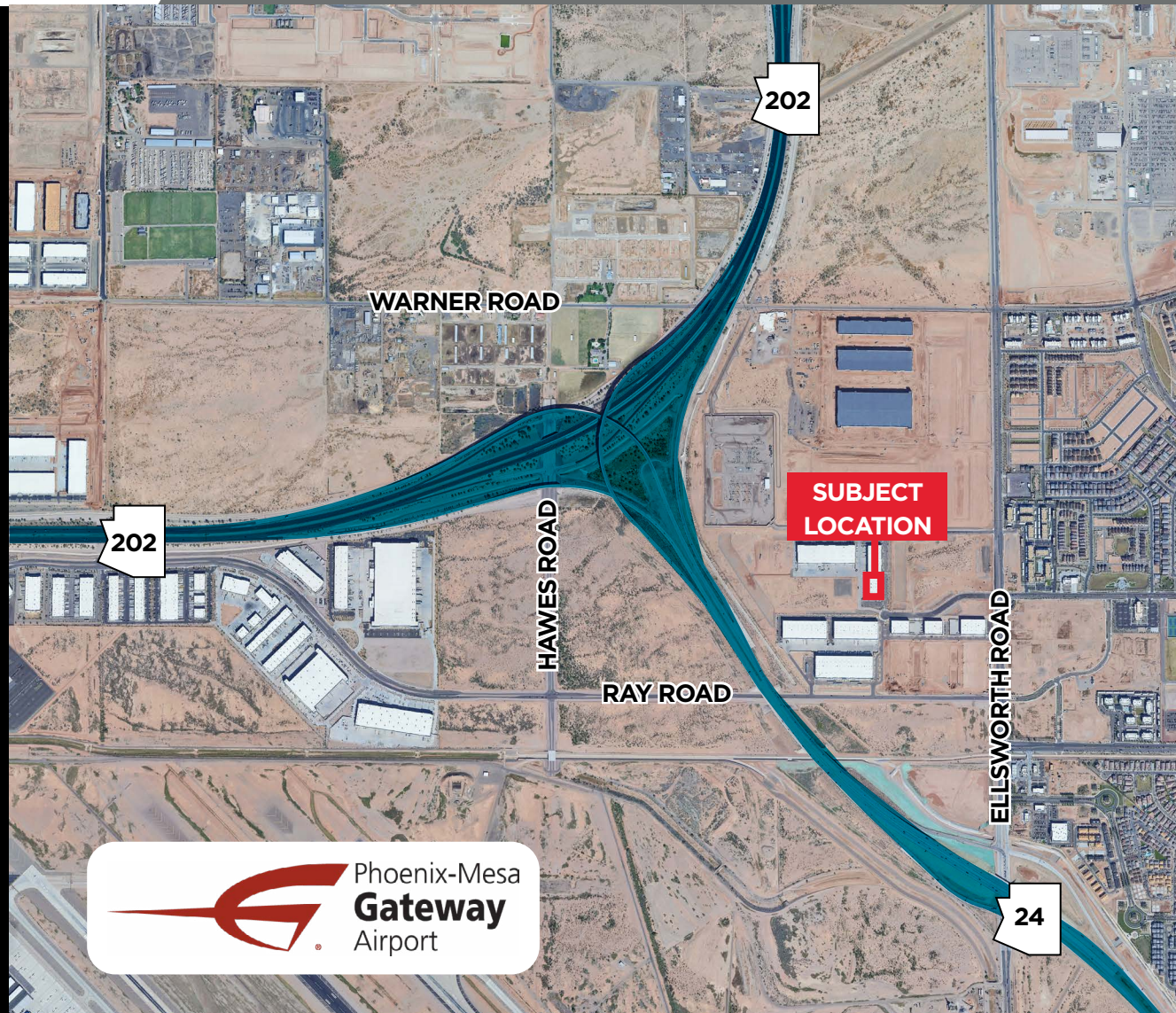
INSULATION R-38



SPRINKLERS ESFR



BUILDING DEPTH 160'



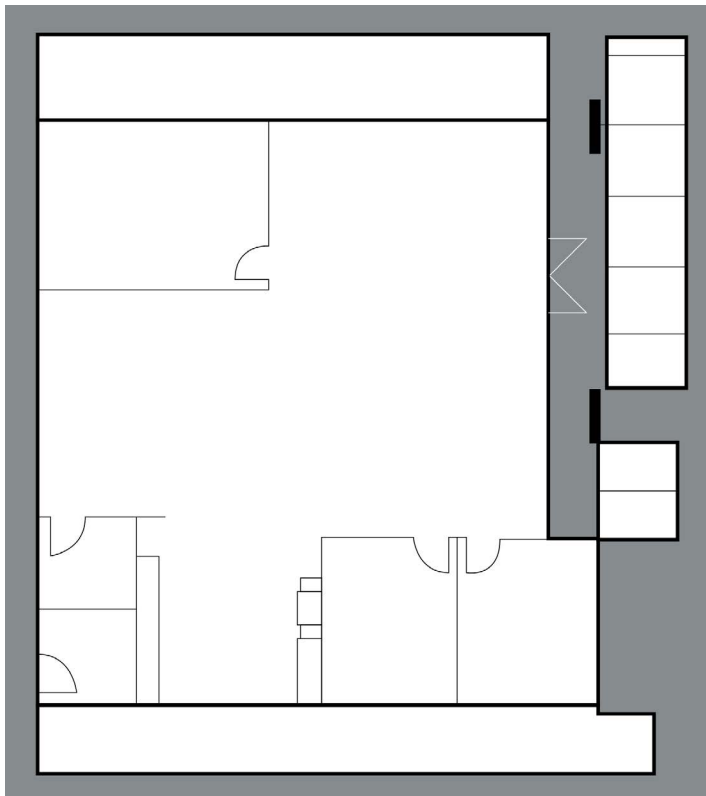
BUILDING FEATURES

AVAILABLE SF
±25,983 SF

OFFICE SF
±2,000 SF

CLEAR HEIGHT
30'

EXHIBIT A-2 PREMISES



FULL BUILDING VIEW



PROPERTY

PHOTOS



BUILD-OUT

SPECIFICATIONS

- $\pm 2,000$ SF of Office Suite
- LED Lighting
- EVAP Cooled Warehouse
- Three (3) Dock Levelers
- 600 Amps 277/480 Volt Power



8953

E STARFIRE
AVENUE #103
PHOENIX, AZ



For more information, please contact:

MIKE HAENEL

Executive Vice Chair

+1 602 224 4404

michael.haenel@cushwake.com

PHIL HAENEL

Vice Chair

+1 602 224 4409

phil.haenel@cushwake.com

JUSTIN SMITH

Senior Associate

+1 602 586 5938

justin.p.smith@cushwake.com

2555 E Camelback Rd., Suite 400 | Phoenix, AZ 85016 | PH: +1 602 954 9000 | FX: +1 602 253 0528 | cushmanwakefield.com

©2025 Cushman & Wakefield. All rights reserved. The information contained in this communication is strictly confidential. This information has been obtained from sources believed to be reliable but has not been verified. NO WARRANTY OR REPRESENTATION, EXPRESS OR IMPLIED, IS MADE AS TO THE CONDITION OF THE PROPERTY (OR PROPERTIES) REFERENCED HEREIN OR AS TO THE ACCURACY OR COMPLETENESS OF THE INFORMATION CONTAINED HEREIN, AND SAME IS SUBMITTED SUBJECT TO ERRORS, OMISSIONS, CHANGE OF PRICE, RENTAL OR OTHER CONDITIONS, WITHDRAWAL WITHOUT NOTICE, AND TO ANY SPECIAL LISTING CONDITIONS IMPOSED BY THE PROPERTY OWNER(S). ANY PROJECTIONS, OPINIONS OR ESTIMATES ARE SUBJECT TO UNCERTAINTY AND DO NOT SIGNIFY CURRENT OR FUTURE PROPERTY PERFORMANCE.