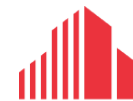




**FOR LEASE UNIT 6: 1,950 SF**

**247 WESTBROOK ROAD**

**OTTAWA, ON**



**CUSHMAN &  
WAKEFIELD**  
Ottawa



# 247 WESTBROOK ROAD

## OTTAWA, ON

### Property Features

Well situated, clean, industrial space. Located in Carp, Ontario approximately 30 minutes or 33 kilometers west of downtown Ottawa and just minutes from Kanata.

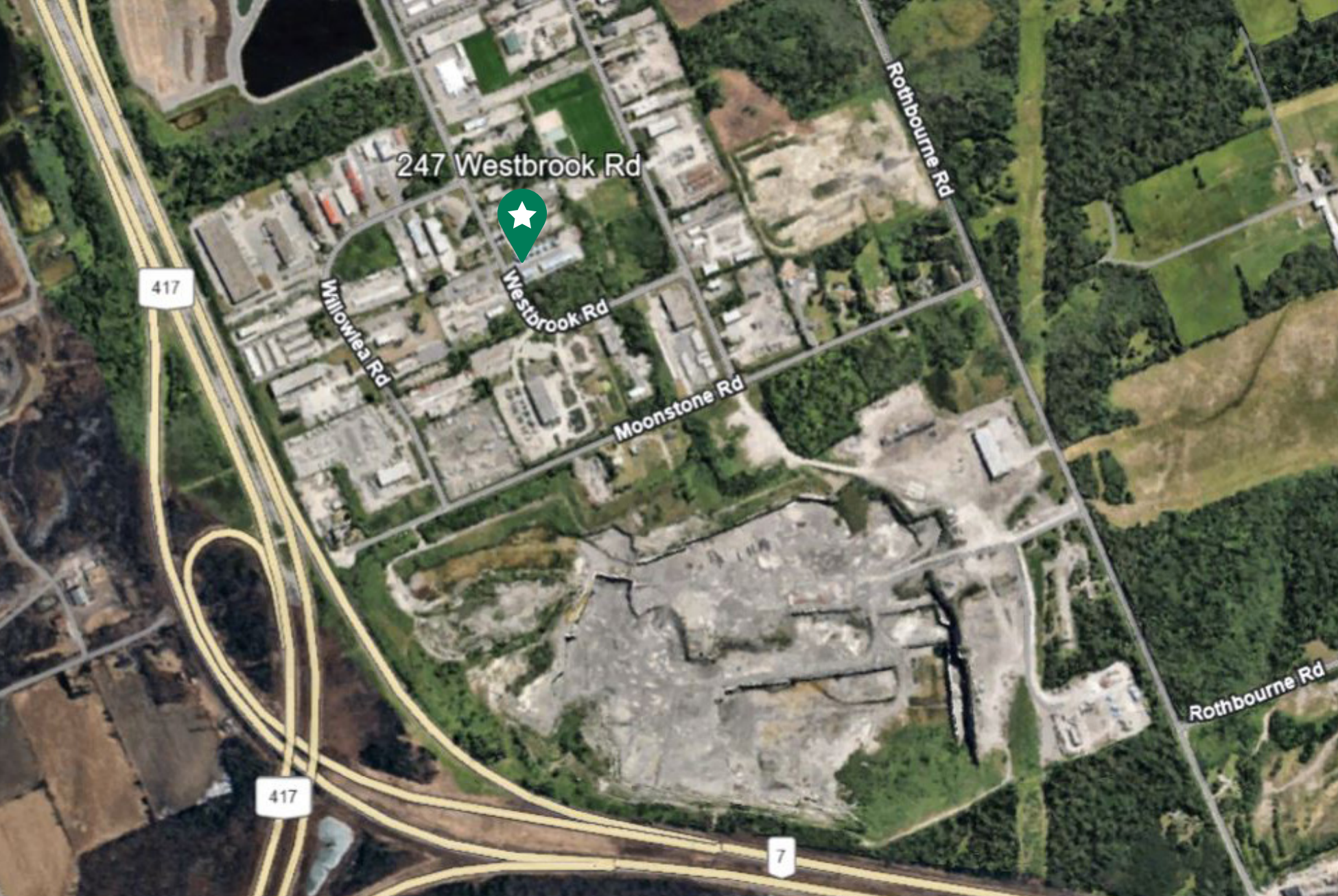
Available—July 1<sup>st</sup>, 2025

Space Available:	Unit 6—1,950 SF (sizeable yard adjacent to the unit for use by the tenant)
Loading:	One (1) grade level door
Parking:	On-site
Lease Rate:	\$21.00 PSF
Additional Rent:	\$8.00 PSF





**247 WESTBROOK ROAD**  
**OTTAWA, ON**







## FOR MORE INFORMATION, CONTACT:

### NEIL MASON

Associate Vice President  
Sales Representative  
+1 613 780 1571  
nmason@cwottawa.com

©2025 Cushman & Wakefield Ottawa. Brokerage Independently Owned and Operated. All rights reserved. The information contained in this communication is strictly confidential. This information has been obtained from sources believed to be reliable but has not been verified. NO WARRANTY OR REPRESENTATION, EXPRESS OR IMPLIED, IS MADE AS TO THE CONDITION OF THE PROPERTY (OR PROPERTIES) REFERENCED HEREIN OR AS TO THE ACCURACY OR COMPLETENESS OF THE INFORMATION CONTAINED HEREIN, AND SAME IS SUBMITTED SUBJECT TO ERRORS, OMISSIONS, CHANGE OF PRICE, RENTAL OR OTHER CONDITIONS, WITHDRAWAL WITHOUT NOTICE, AND TO ANY SPECIAL LISTING CONDITIONS IMPOSED BY THE PROPERTY OWNER(S). ANY PROJECTIONS, OPINIONS OR ESTIMATES ARE SUBJECT TO UNCERTAINTY AND DO NOT SIGNIFY CURRENT OR FUTURE PROPERTY PERFORMANCE.

