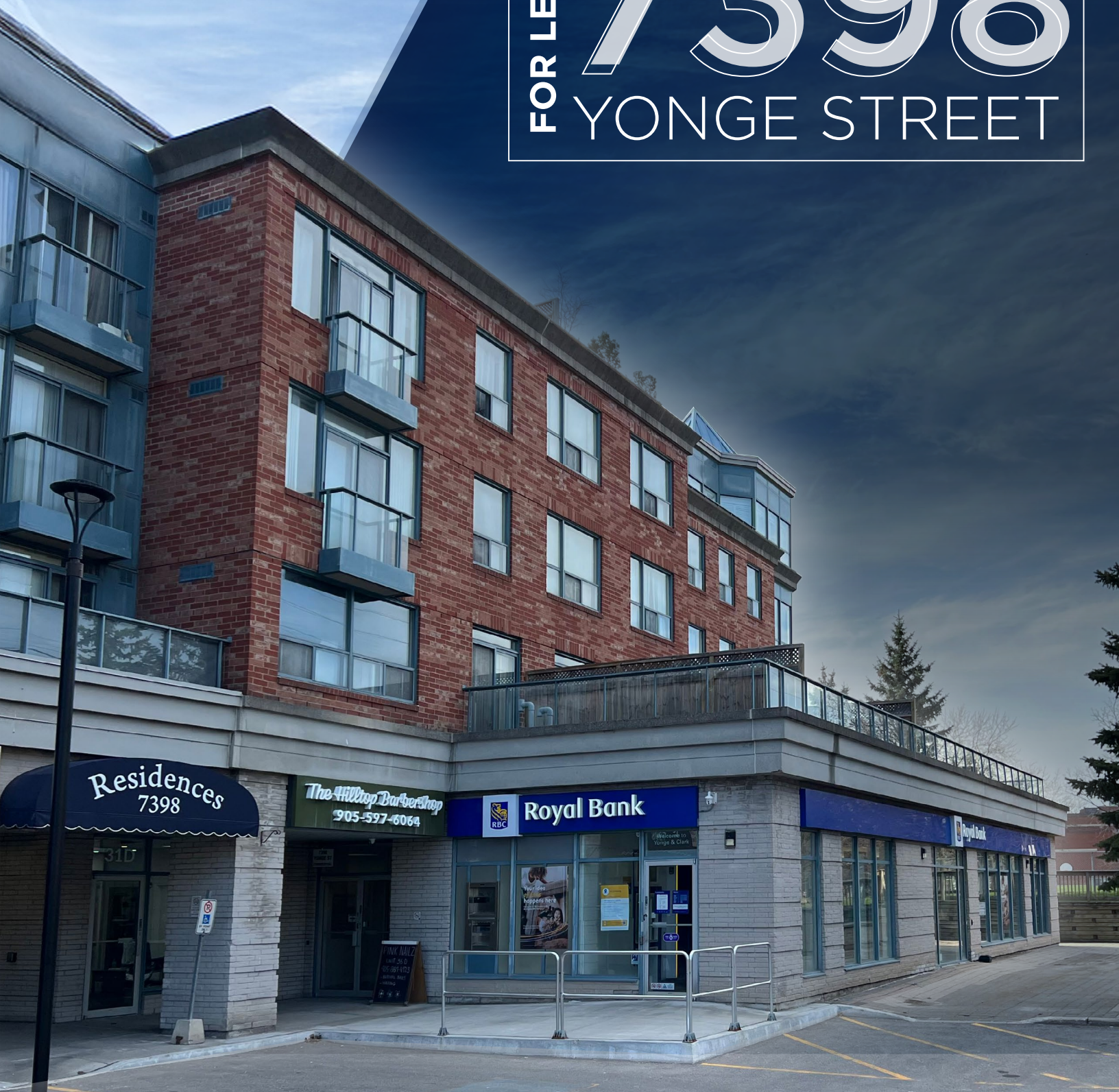


FOR LEASE **7398**
YONGE STREET



ENDCAP RETAIL UNIT IN BUSY YONGE STREET PLAZA

PROPERTY DETAILS

LOCATION:	Yonge Street, just north of Steeles between Clarke & Centre
SIZE:	5,979 SF
NET RENT:	\$47.00 PSF NET
ADDITIONAL RENT:	\$12.98 PSF NET (2025 Est.)
TERM:	5-20 Years (no redevelopment provisions of any kind)
AVAILABLE:	November 1, 2025

OPPORTUNITY HIGHLIGHTS

- Fully turn key bank branch with numerous improvements in place
- Excellent exposure to Yonge St, located on mixed use / plaza end cap
- Total of 18 designated parking spaces
- Great open floor plate with numerous improvements / recently renovated.
- Suitable for financial, professional service, and clean use retail uses
- F&B uses are not permitted

DEMOGRAPHICS



TOTAL POPULATION
97,602
3km radius



DAYTIME POPULATION
100,463
3km radius

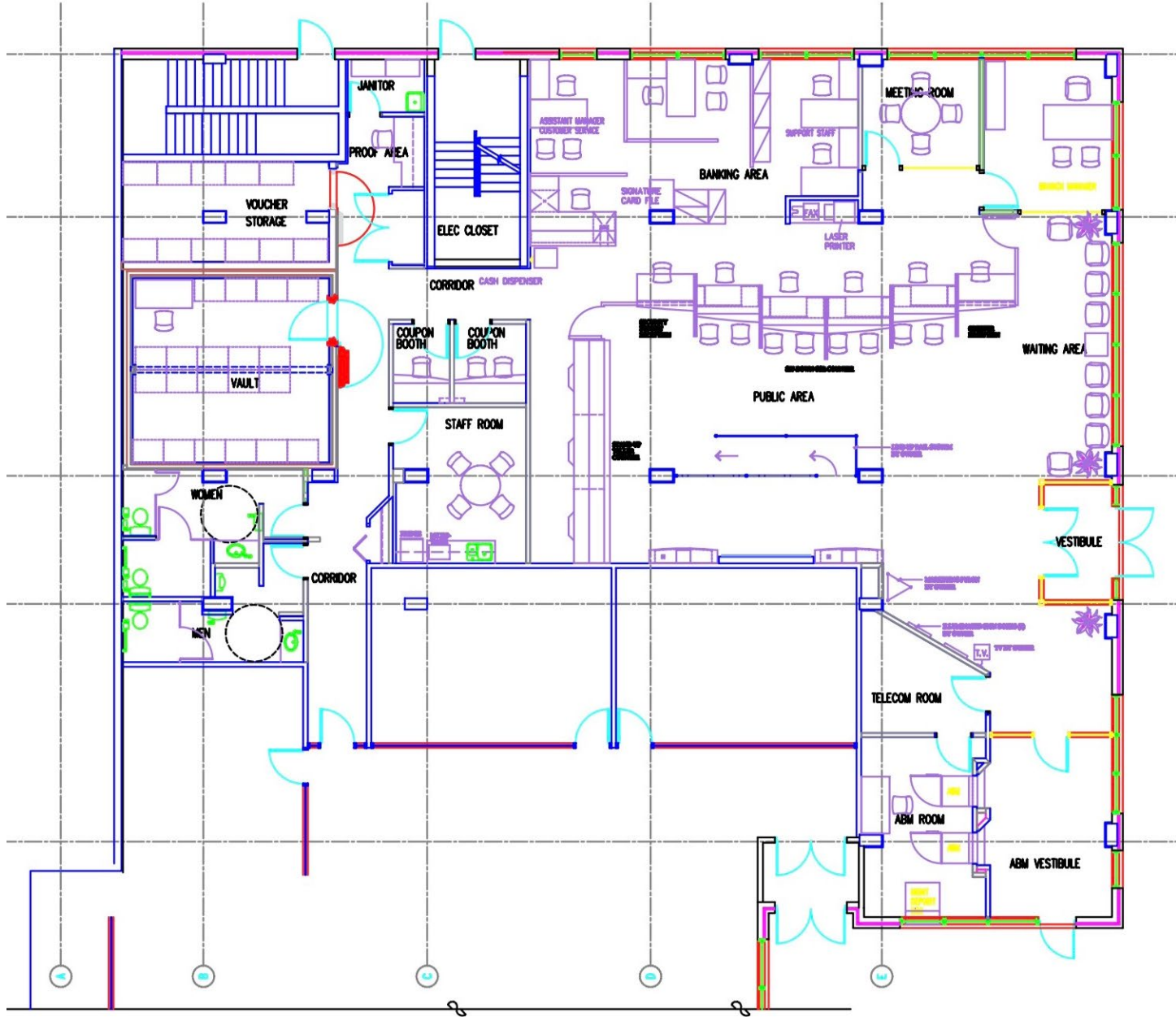


HOUSEHOLD INCOME
\$123,334
3km radius



MEDIAN AGE
45.7 YEARS
3km radius

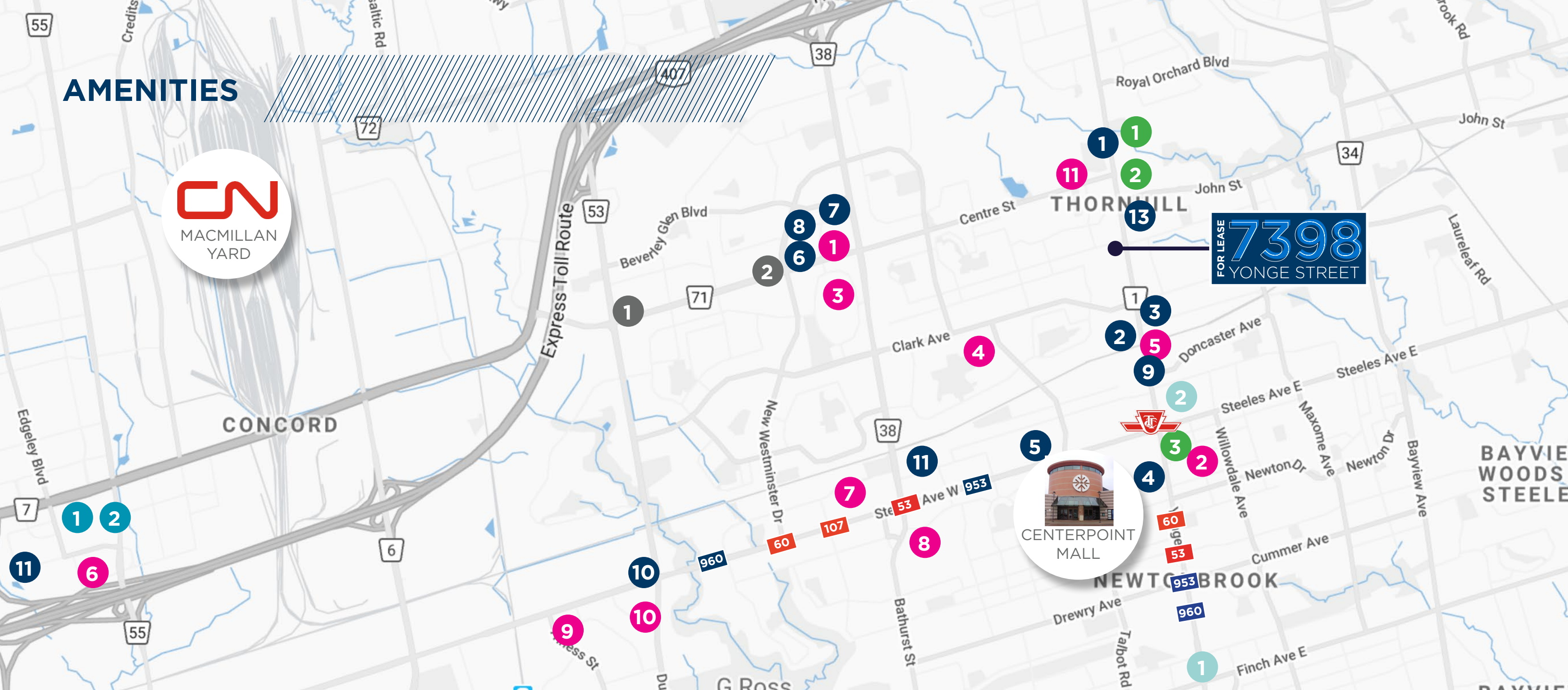
FLOORPLAN



AMENITIES



FOR LEASE
7398
YONGE STREET



RESTAURANT	GROCERY / RETAIL	BANKS	GYM
1 Starbucks	1 Walmart	1 CIBC	1 GoodLife Fitness
2 Red Lobster	2 NoFrills	2 Scotiabank	2 Fit4Less
3 Mymy Chicken	3 T&T Supermarket	3 BMO	
4 Congee Queen	4 Sobeyes		
5 McDonalds	5 Seasons Foodmart		
6 Wingstop	6 Costco		
7 Subway	7 FreshCo		
8 Copper Branch	8 Metro		
9 Popeyes	9 The Home Depot		
10 168 Sushi Buffet	10 Winners		
11 Dave and Busters	11 Mr. Lube		
12 A&W			
13 The Octagon			

EXPRESS/REGULAR BUS



MICHAEL BETEL*

Vice President

416 359 2706

Mike.Betel@ca.cushwake.com

SIMON LEFAVE*

Associate

647 284 8802

simon.lefave@cushwake.com

*Sales Representative

