

FOR SALE 63,300 SF



KENSINGTON BUSINESS CENTER

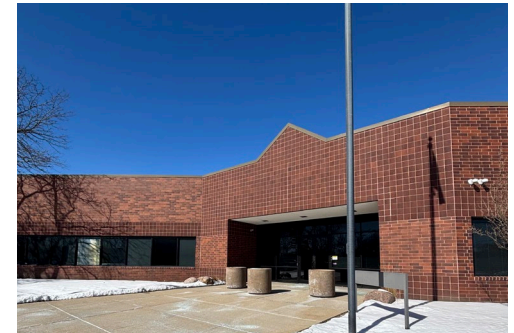
852 FEEHANVILLE DRIVE, MOUNT PROSPECT, IL



KENSINGTON BUSINESS CENTER

852 Feehanville Drive, Mount Prospect, IL

BUILDING & SITE INFORMATION



Building Size:	63,300 SF Office: Approx. 61,000 SF Warehouse: Approx. 2,000 SF
-----------------------	---

Year Built:	1985
--------------------	------

Construction Type:	Masonry
---------------------------	---------

Clear Height:	16'
----------------------	-----

Power:	2 panels: 600 amps / 800 amps @ 480 volts, plus back-up generator
---------------	---

Loading:	2 drive-in doors (12' x 14') 1 drive-in door with hydraulic leveler
-----------------	---

Real Estate Taxes (2023):	\$5.40 PSF
----------------------------------	------------

Site Size:	7.67 acres
-------------------	------------

Zoning:	I-1
----------------	-----

Parking Space:	200+ car parking
-----------------------	------------------

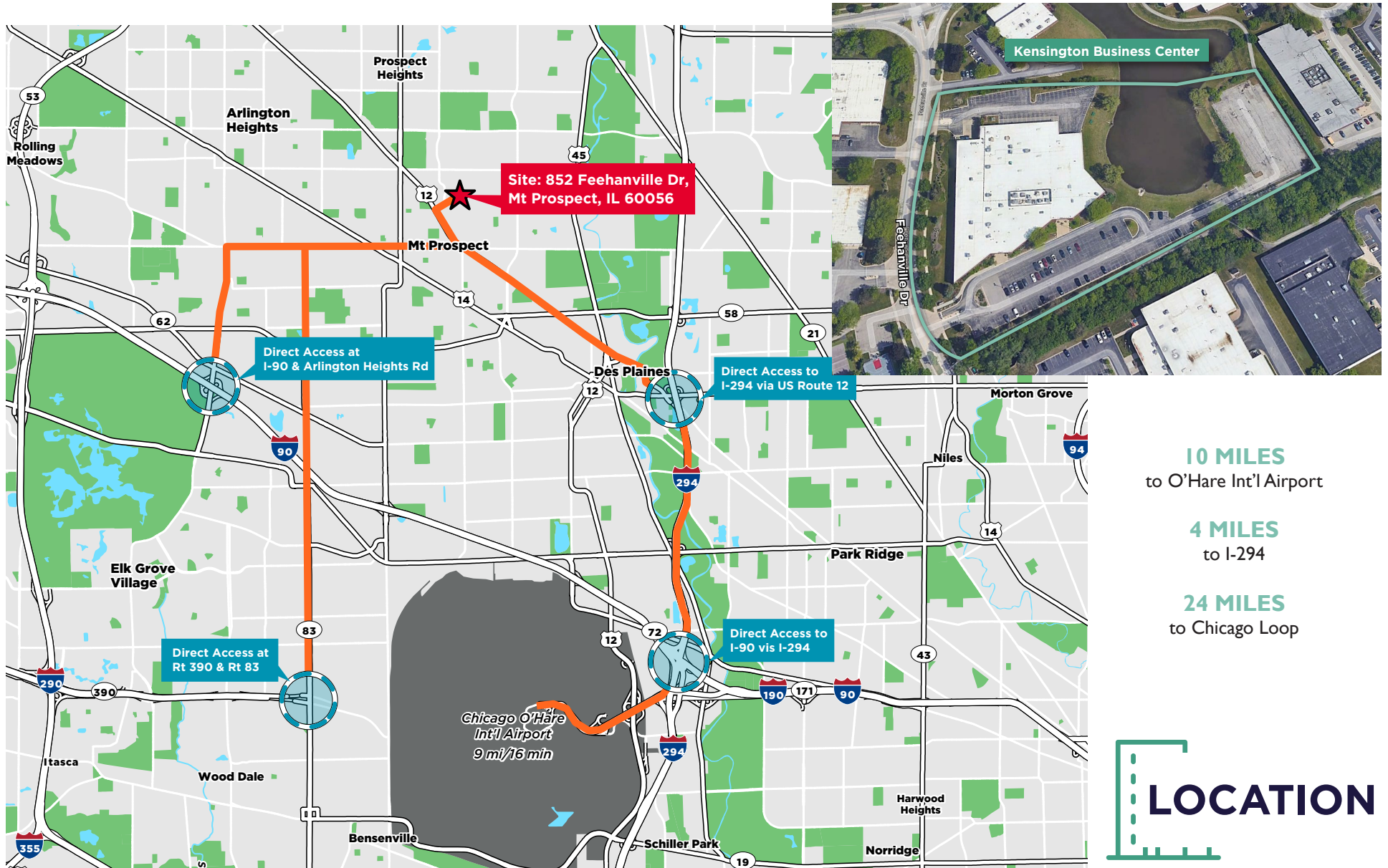
Highest & Best Use:	Ideal for showroom, engineering, design, call centers, services type industries, lab tech users, research companies
--------------------------------	---

Sale Price:	\$6,647,000 (\$105.00 psf)
--------------------	----------------------------

Comments:	High end flex property Corporate setting
------------------	---

KENSINGTON BUSINESS CENTER

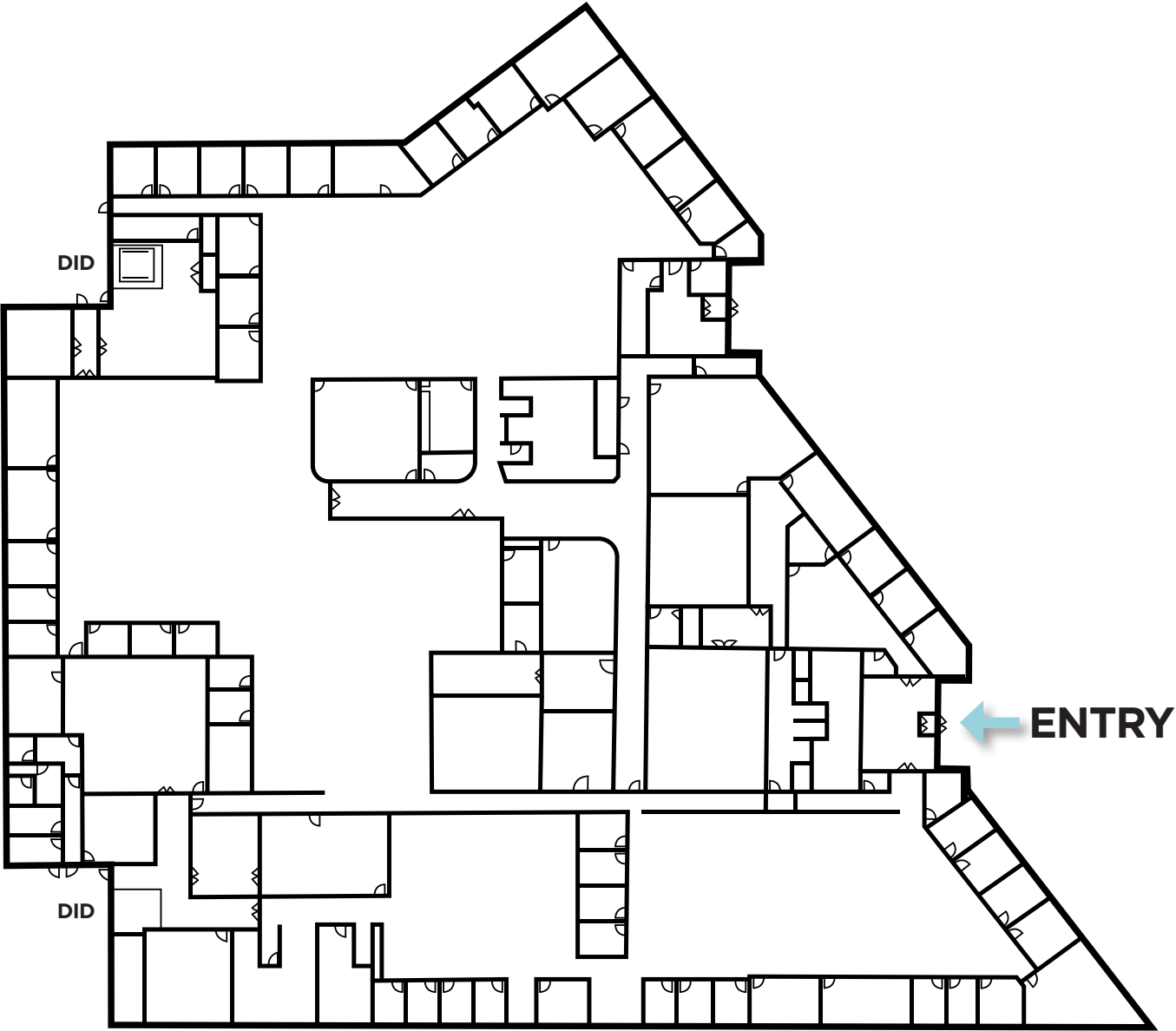
852 Feehanville Drive, Mount Prospect, IL



KENSINGTON BUSINESS CENTER

852 Feehanville Drive,
Mount Prospect, IL

FLOOR
PLAN



KENSINGTON BUSINESS CENTER

852 Feehanville Drive, Mount Prospect, IL



OPEN AREAS



SHOWROOM



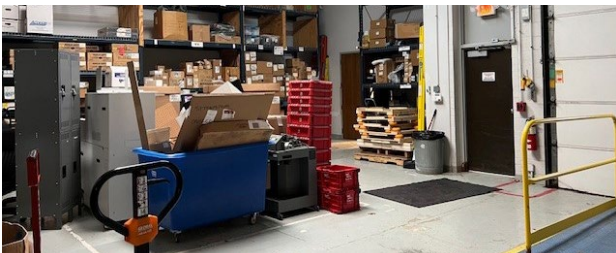
PRIVATES



KITCHEN



WAREHOUSE

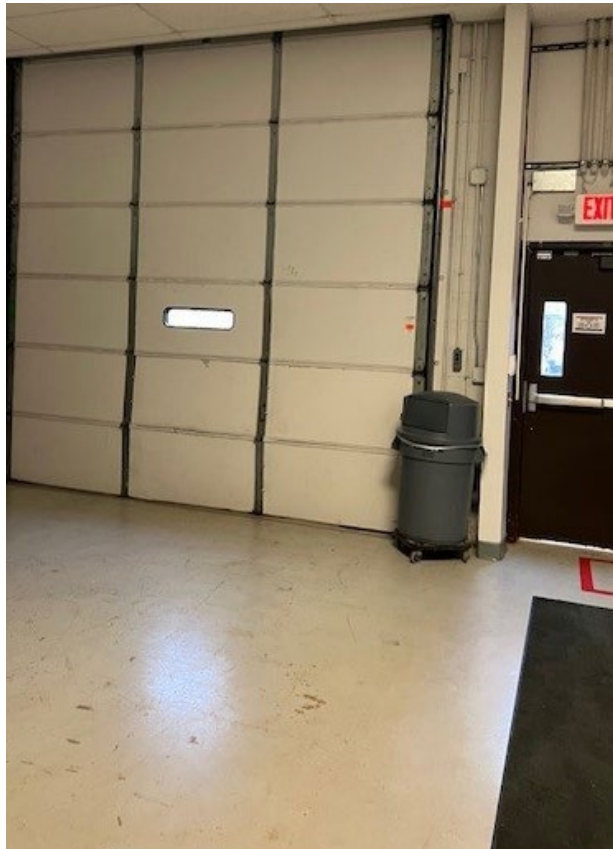


KENSINGTON BUSINESS CENTER

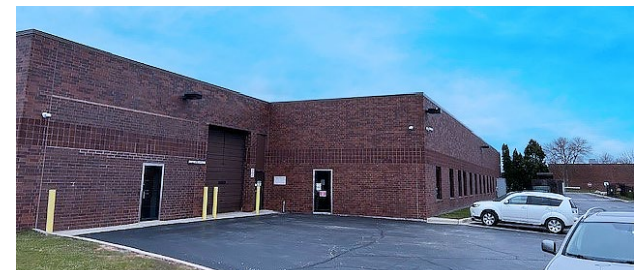
852 Feehanville Drive, Mount Prospect, IL



LOADING AREAS



MAIN ENTRANCE





FOR MORE INFORMATION, CONTACT:

AL CARUANA

Executive Manager Director
D: +1 847 720 1326
M: +1 847 456 8417
al.caruana@cushwake.com

BRITT CASEY

Executive Vice Chairman
D: +1 847 518 3280
M: +1 847 456 7545
britt.casey@cushwake.com

MICHAEL LABEK

Senior Associate
D: +1 312 470 2309
M: +1 773 315 0233
michael.labek@cushwake.com



**CUSHMAN &
WAKEFIELD**

ELIZABETH SCHOENHEIDER

Associate
D: +1 312 420 1328
M: +1 224 300 8199
elizabeth.schoenheider@cushwake.com

©2025 Cushman & Wakefield. All rights reserved. The information contained in this communication is strictly confidential. This information has been obtained from sources believed to be reliable but has not been verified. NO WARRANTY OR REPRESENTATION, EXPRESS OR IMPLIED, IS MADE AS TO THE CONDITION OF THE PROPERTY (OR PROPERTIES) REFERENCED HEREIN OR AS TO THE ACCURACY OR COMPLETENESS OF THE INFORMATION CONTAINED HEREIN, AND SAME IS SUBMITTED SUBJECT TO ERRORS, OMISSIONS, CHANGE OF PRICE, RENTAL OR OTHER CONDITIONS, WITHDRAWAL WITHOUT NOTICE, AND TO ANY SPECIAL LISTING CONDITIONS IMPOSED BY THE PROPERTY OWNER(S). ANY PROJECTIONS, OPINIONS OR ESTIMATES ARE SUBJECT TO UNCERTAINTY AND DO NOT SIGNIFY CURRENT OR FUTURE PROPERTY PERFORMANCE.