

# 2105 S. BASCOM AVENUE

CAMPBELL | ±3,504 SF AVAILABLE FOR SUBLEASE



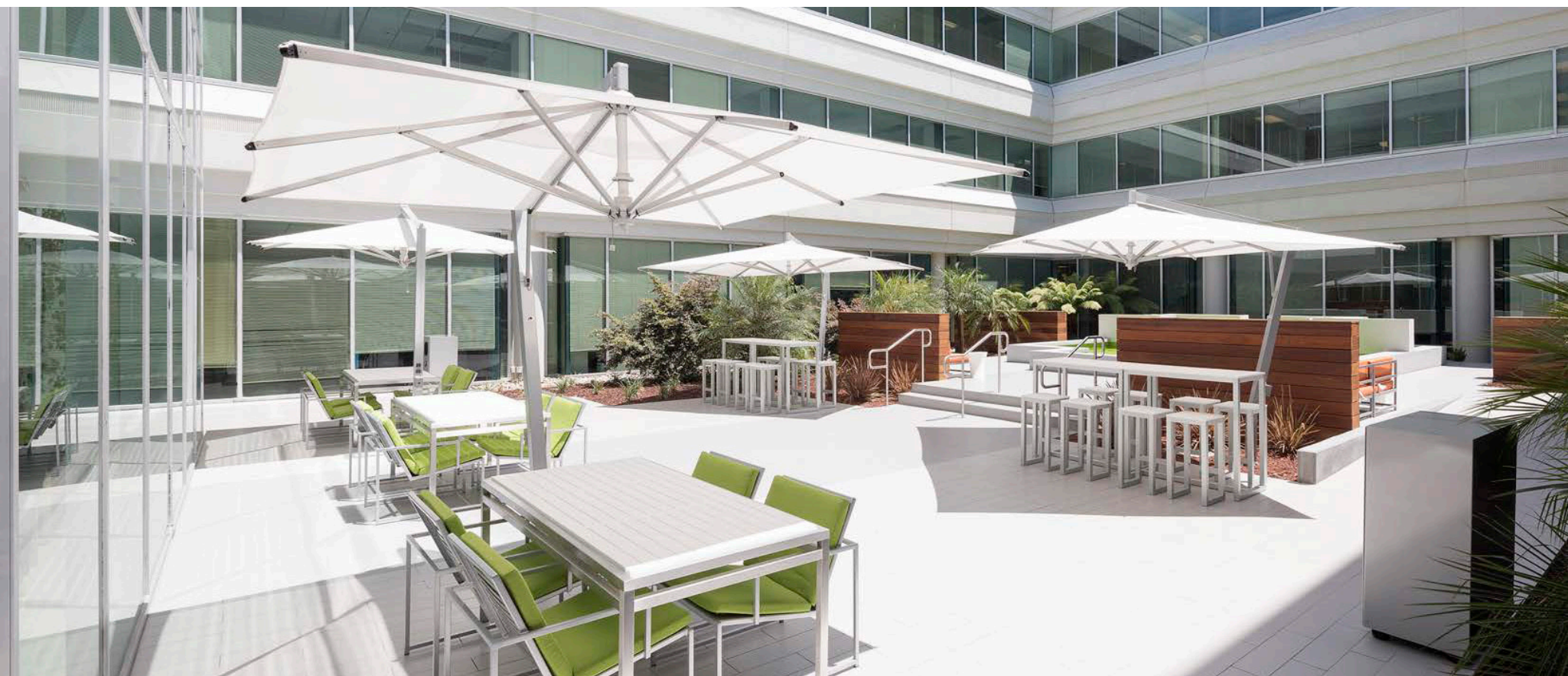
CARRICK YOUNG | P +1 408 836 2878 | [carrick.young@cushwake.com](mailto:carrick.young@cushwake.com) | LIC #02018252



Cushman & Wakefield Copyright 2019. No warranty or representation, express or implied, is made to the accuracy or completeness of the information contained herein, and same is submitted subject to errors, omissions, change of price, rental or other conditions, withdrawal without notice, and to any special listing conditions imposed by the property owner(s). As applicable, we make no representation as to the condition of the property (or properties) in question.



# 2105 S. BASCOM AVENUE



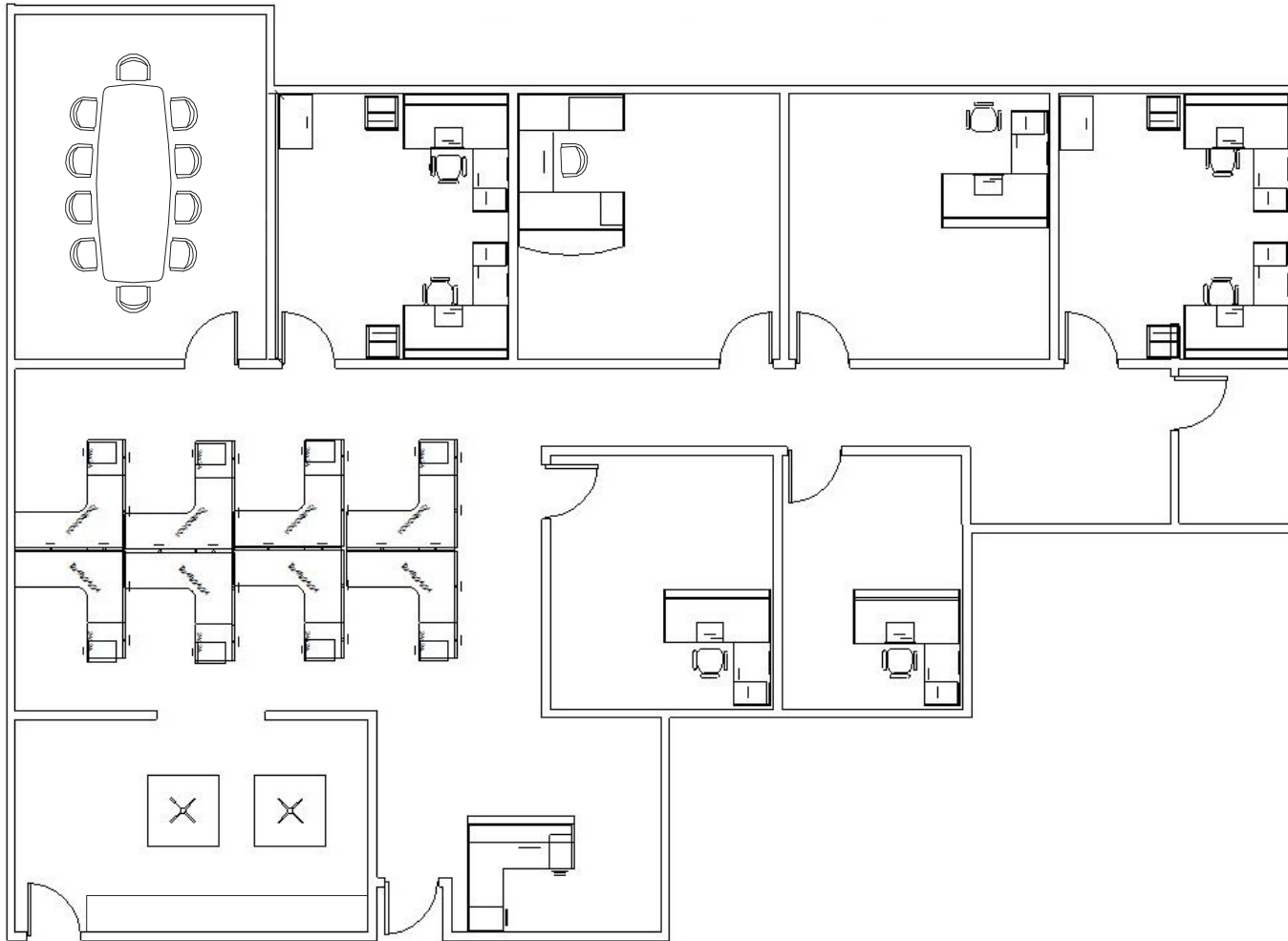
## PROPERTY HIGHLIGHTS

- Suite 200: ±3,504 SF
- Extensive Glassline
- Courtyard with Fountain & Seating Areas
- Common Conference Room
- 4/1,000 Parking Ratio
- Furniture and Cabling Available
- Access to Highways 17, 85, 280 & 880
- Walking Distance to Restaurants, Lodging & Retail Amenities
- 5 Minute Drive to Downtown Campbell & Hamilton Light Rail Stations
- LED: 1/31/2020

# 2105 S. BASCOM AVENUE

## FLOOR PLAN

Suite 200:  $\pm 3,504$  SF





## AMENITIES MAP

