

AVAILABLE FOR SALE

100 Maxine Road
121 Maxine Road
38 Doolittle Street

DANVILLE, VA 24541



Three (3) Buildings totaling ±200,000 SF ON 16.13 Acres
Former Wood Products Manufacturing Facility

Property Site- Facilities Overview



Properties

100 Maxine Road
38 Doolittle Street
121 Maxine Road

Size

116,458 SF
80,258 SF
5,880 SF

Docks

8
1
1 (10' x 10')

Clear Height

±21' - 23'
±15'7" - 28'7"
±18' center, 15'6" eaves

Total Size

202,596 SF

Asking Price: \$5,400,000 (\$26.65 psf)

100 Maxine Road



PROPERTY HIGHLIGHTS

 SIZE
116,438 SF

 COLUMN SPACING
Varies

 CEILING HEIGHT
21' -23'

 SPRINKLER
Wet System

 LIGHTING
T5

 ELECTRICAL
**Multiple transformers;
2500 KVA, 2500 KVA,
1500 KVA, 750 KVA**

PROPERTY SUMMARY



ADDRESS

100 Maxine Road,
Danville, VA 24541



COUNTY

Independent (Pittsylvania)



PARCEL ID#

56801



SQUARE FOOT

116,458 SF



LAND AREA

10.64 Acres



PRODUCT TYPE

Warehouse / Manufacturing



CONSTRUCTION

Metal



HVAC

In Office and CNC Room



YEAR BUILT

1952 & 1989



ZONING

IM Manufacturing District



RAIL

Site previously had a
dedicated spur and is located
along a secondary line



CEILING HEIGHT

21' - 23'



PARKING

±64 Paved Parking Spaces



ROOF

Multiple types
(mostly metal-age unknown)



SPRINKLER

Wet system



LOADING

4 Dock-Height Door and
2 Drive-In Doors



EQUIPMENT

Existing, in-place wood dust
collection system & silos to
remain as pictured through-out
and in "as is" condition without
any warranty as to operating
condition



Comments:

- Good Location near US Hwy 29
- Well-maintained
- Building located in established industrial area
- Excess land for potential expansion
- Legacy manufacturing market with abundant labor supply

38 Doolittle Street



PROPERTY HIGHLIGHTS

SIZE
80,258 SF

COLUMN SPACING
Varies

CEILING HEIGHT
15'7" - 28'7"

SPRINKLER
Wet System

LIGHTING
T5

ELECTRICAL
**1,000 KVA, 500 KVA
transformers**

PROPERTY SUMMARY



ADDRESS

38 Doolittle Street,
Danville, VA 24541



COUNTY

Independent (Pittsylvania)



PARCEL ID#

53504



SQUARE FOOT

80,258 SF



LAND AREA

3.44 Acres



PRODUCT TYPE

Warehouse / Manufacturing



CONSTRUCTION

Metal



HVAC

In Office



YEAR BUILT

1952 & 1989



ZONING

IM Manufacturing District



RAIL

Site previously had a
dedicated spur and is
located along a secondary
line



CEILING HEIGHT

±20'



PARKING

28 Paved Parking Spaces



ROOF

Multiple types
(mostly metal-age unknown)



SPRINKLER

Wet system



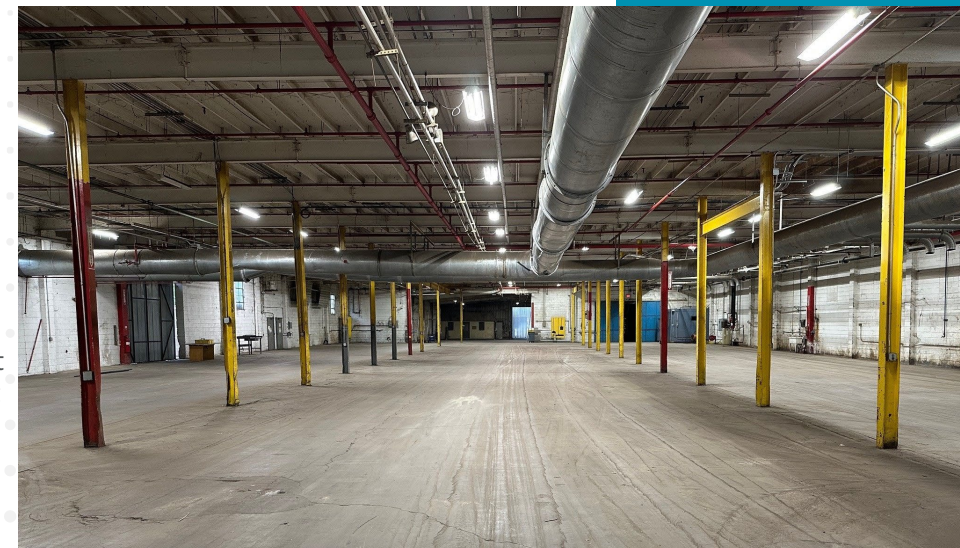
LOADING

1 Dock-Height Door and
3 Drive-In Doors



EQUIPMENT

Existing, in-place wood dust
collection system & silos to
remain as pictured through-out
and in “as is” condition without
any warranty as to operating
condition



Comments:

- Good Location near US Hwy 29
- Well-maintained
- Building located in established industrial area
- Legacy manufacturing market with abundant labor supply

121 Maxine Road



PROPERTY HIGHLIGHTS

 SIZE
5,880 SF

 COLUMN SPACING
N/A

 CEILING HEIGHT
18' Center
15'6" Eaves

 SPRINKLER
Wet System

 LIGHTING
LED

 ELECTRICAL
TBD

PROPERTY SUMMARY



ADDRESS

121 Maxine Road,
Danville, VA 24541



COUNTY

Independent (Pittsylvania)



PARCEL ID#

55426



SQUARE FOOT

5,880 SF



LAND AREA

2.08 Acres



PRODUCT TYPE

Warehouse / Manufacturing



CONSTRUCTION

Brick



YEAR BUILT/RENO

1967 & 2020



ZONING

IM Manufacturing District



RAIL

Potential



CEILING HEIGHT

18' Center
15'6" Eaves



PARKING

±112 Paved Parking Spaces



ROOF

Metal



SPRINKLER

Wet system



HVAC

In Office and CNC Room



LOADING

1 Dock-Height Door and
0 Drive-In Doors

Comments:

- Good Location near US Hwy 29
- Well-maintained
- Building located in established industrial area
- Excess land for outside storage
- Legacy manufacturing market with abundant labor supply



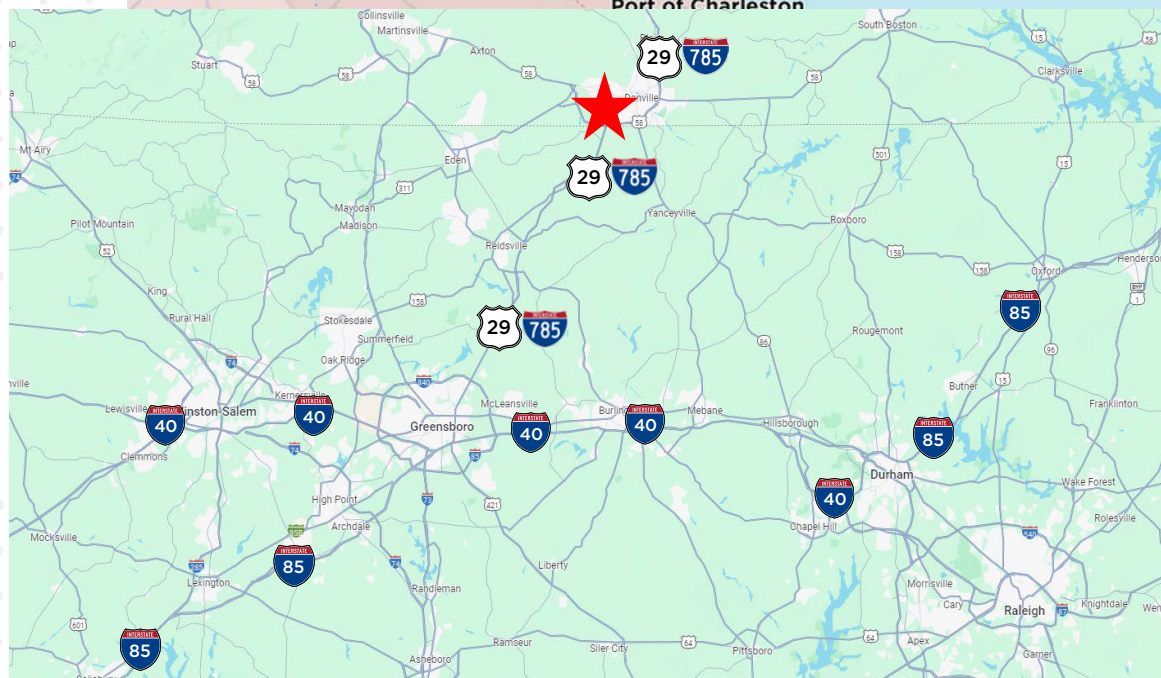
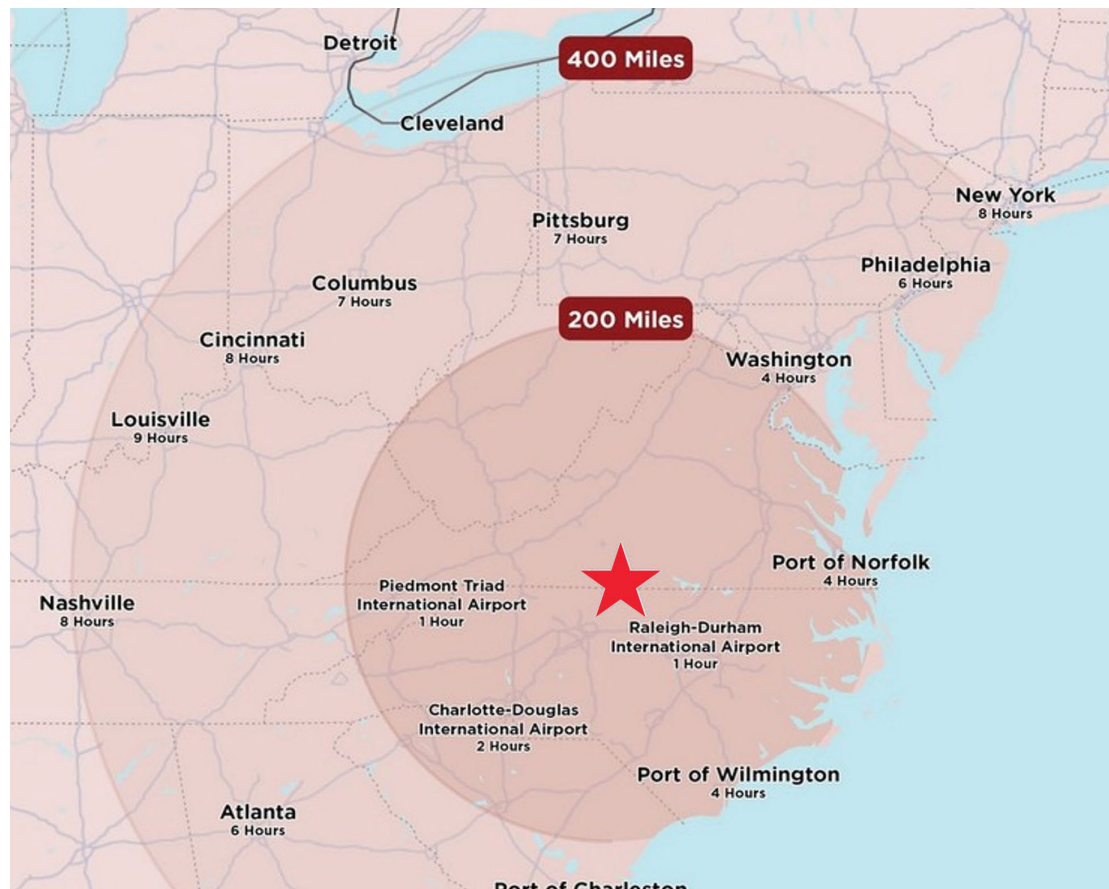
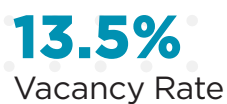
AERIAL MAP

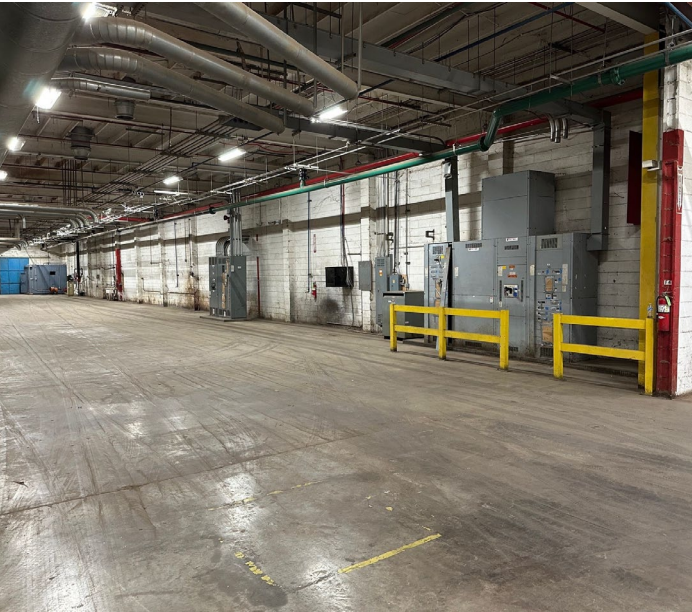


SUBJECT PROPERTY



	2 Miles	5 Miles	10 Miles
Population	4,570	28,326	69,684
Households	2,012	12,648	30,261
Avg. HH Income	\$64,475	\$62,318	\$60,935







FOR MORE INFORMATION, PLEASE CONTACT:

Tom Townes, CCIM | SIOR
Managing Director
+1 336 812 3302
tom.townes@cushwake.com
VA License # 0225096047

©2025 Cushman & Wakefield. All rights reserved. The information contained in this communication is strictly confidential. This information has been obtained from sources believed to be reliable but has not been verified. NO WARRANTY OR REPRESENTATION, EXPRESS OR IMPLIED, IS MADE AS TO THE CONDITION OF THE PROPERTY (OR PROPERTIES) REFERENCED HEREIN OR AS TO THE ACCURACY OR COMPLETENESS OF THE INFORMATION CONTAINED HEREIN, AND SAME IS SUBMITTED SUBJECT TO ERRORS, OMISSIONS, CHANGE OF PRICE, RENTAL OR OTHER CONDITIONS, WITHDRAWAL WITHOUT NOTICE, AND TO ANY SPECIAL LISTING CONDITIONS IMPOSED BY THE PROPERTY OWNER(S). ANY PROJECTIONS, OPINIONS OR ESTIMATES ARE SUBJECT TO UNCERTAINTY AND DO NOT SIGNIFY CURRENT OR FUTURE PROPERTY PERFORMANCE