



18,106 RSF AVAILABLE FOR SUBLEASE

## **ARAPAHOE BUSINESS PARK-BLDG 6**

12600 E ARAPAHOE RD, ENGLEWOOD, CO 80112

# PROPERTY HIGHLIGHTS



- Sublease Term through April 2027
- 18,106 RSF
- \$8.00/SF NNN Asking Rate
- 2024 Estimated OpEx: \$9.08/SF
- 16' Clear
- Loading: 1 DI Door, 1 DH Door

## SPACE NOTES



Great mostly furnished plug n' play space on end cap with 3 sides of 10' glass lines



18 offices and very efficient workstation spaces



Small lab and refrigeration component in a portion of the space with rear roll up door loading bay



Very strong credit sublessor







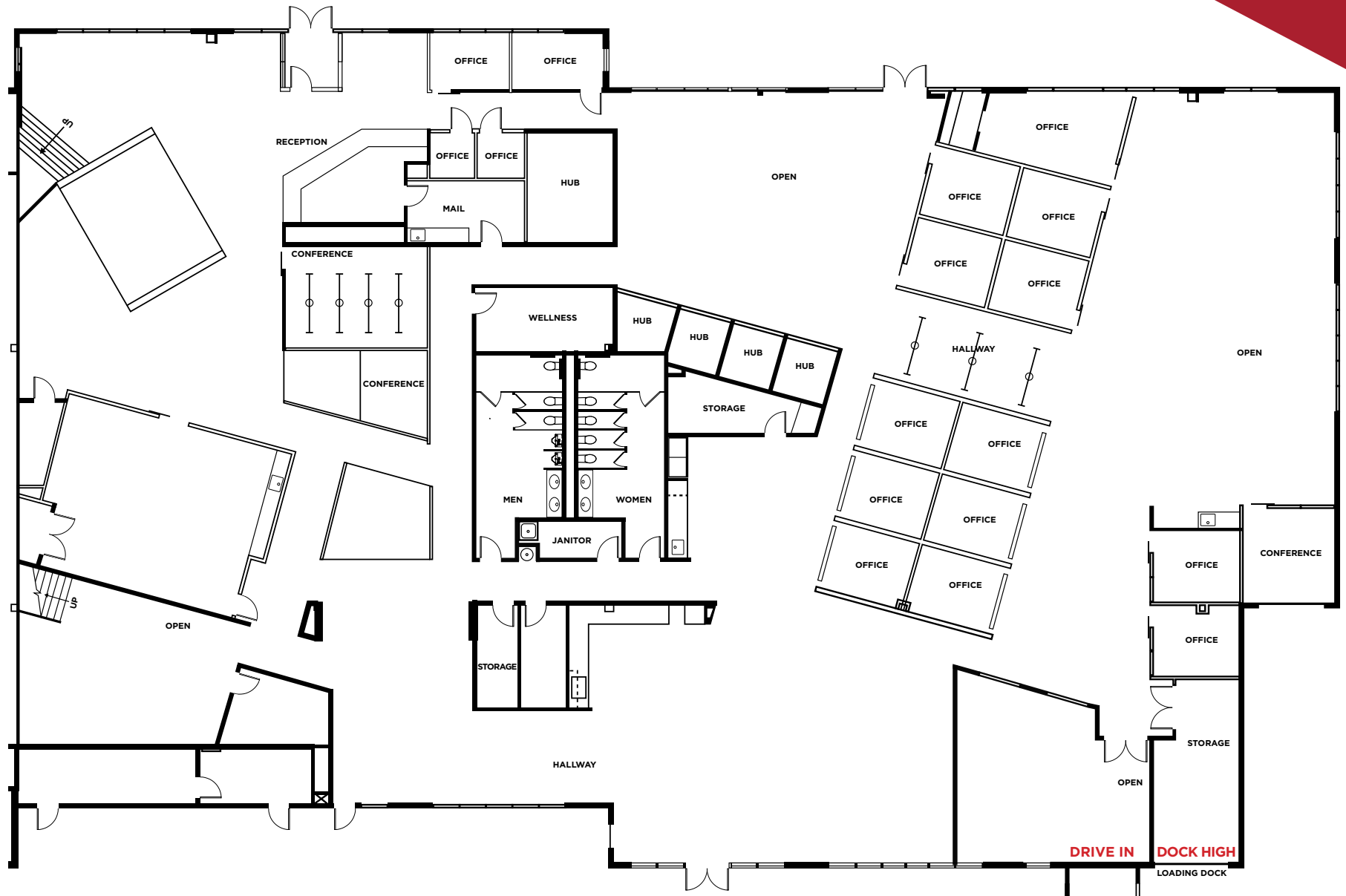




**CUSHMAN & WAKEFIELD**



# FLOOR PLAN







**FOR MORE INFORMATION,  
PLEASE CONTACT:**

**DOUG WULF**

Executive Managing Director  
+1 303 312 4218  
[doug.wulf@cushwake.com](mailto:doug.wulf@cushwake.com)

**TYLER SMITH**

Executive Director  
+1 303 312 4296  
[t.smith@cushwake.com](mailto:t.smith@cushwake.com)

1401 Lawrence Street, Suite 1100  
Denver, Colorado 80202  
[cushmanwakefield.com](http://cushmanwakefield.com)

©2024 Cushman & Wakefield. All rights reserved. The information contained in this communication is strictly confidential. This information has been obtained from sources believed to be reliable but has not been verified. NO WARRANTY OR REPRESENTATION, EXPRESS OR IMPLIED, IS MADE AS TO THE CONDITION OF THE PROPERTY (OR PROPERTIES) REFERENCED HEREIN OR AS TO THE ACCURACY OR COMPLETENESS OF THE INFORMATION CONTAINED HEREIN, AND SAME IS SUBMITTED SUBJECT TO ERRORS, OMISSIONS, CHANGE OF PRICE, RENTAL OR OTHER CONDITIONS, WITHDRAWAL WITHOUT NOTICE, AND TO ANY SPECIAL LISTING CONDITIONS IMPOSED BY THE PROPERTY OWNER(S). ANY PROJECTIONS, OPINIONS OR ESTIMATES ARE SUBJECT TO UNCERTAINTY AND DO NOT SIGNIFY CURRENT OR FUTURE PROPERTY PERFORMANCE.

