

FOR LEASE

Owned and Operated by



Golden Valley Building II

6325 Sandburg Road, Golden Valley, MN

37,832 SF - Available June 1, 2025



Property Information

BUILDING SIZE	131,121 SF
SPACE AVAILABLE	11,945 SF Office 25,887 SF Whse 37,832 SF Total
YEAR BUILT	2001
CLEAR HEIGHT	24'
LOADING	9 docks 5 drive-in doors
LEASE RATE	Negotiable
TAX & CAM	\$4.24 PSF



LEASING INFO & CONTACT

Jason Meyer
Brent Masica
Danny McNamara

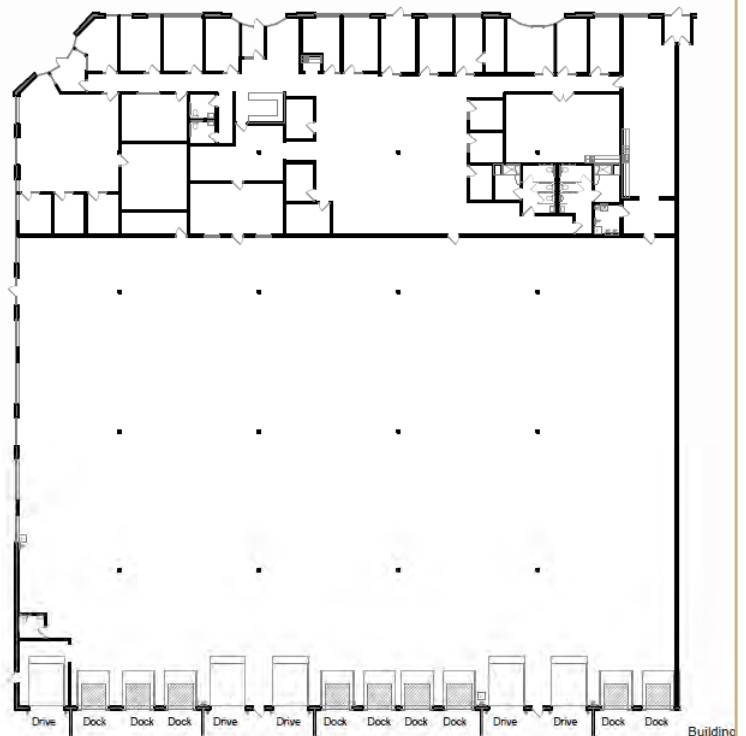
(952) 820 8735 / jason.j.meyer@cushwake.com
(952) 893 8231 / brent.masica@cushwake.com
(952) 456-7890 / danny.mcnamara@cushwake.com





Property Highlights

- State of the art facility
- Incredible infill location
- Direct access to Hwy 100
- End cap with great glass line



Potential Demising Plan



Floor Plan

Scale 1" = 30'-0"

Office	= 11,945 s.f.
Whse.	= 25,887 s.f.
Total	= 37,832 s.f.

