

SOUTHPOINTE TOWNE CENTER

1900 MAIN STREET



IMMEDIATE POSSESSION | IN THE HEART OF SOUTHPOINTE
HIGH-END PLUG-AND-PLAY SUBLEASE
THROUGH SEPTEMBER 30, 2029

For more information, contact:

SAM MCGILL, SIOR, MCR

Managing Director

+1 412 391 2634

sam.mcgill@cushwake.com

RANDY MCCOMBS, SIOR

Managing Director

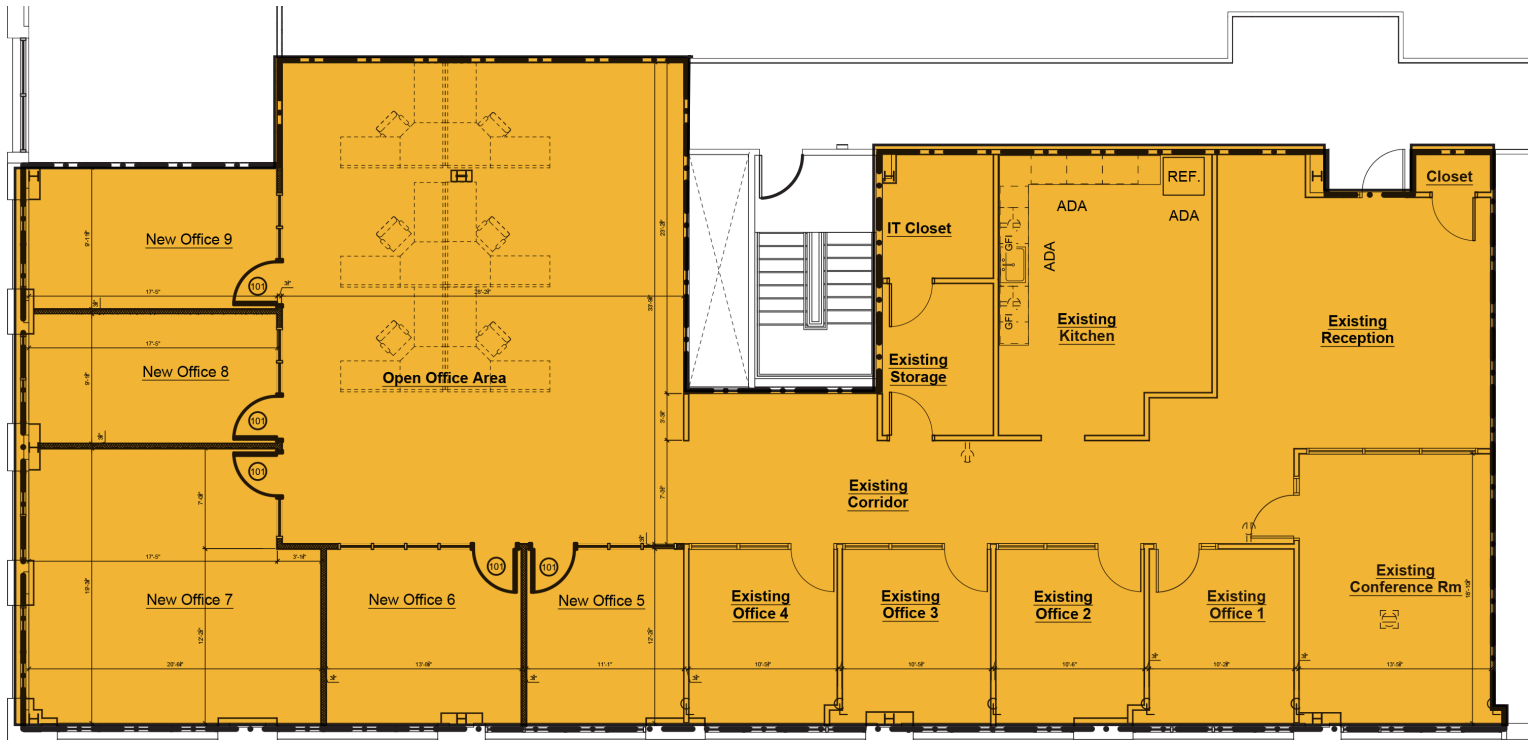
+1 412 391 0990

randy.mccombs@cushwake.com





FLOOR PLAN



SUBLEASE FEATURES

- » Suite 211
- » 4,775 RSF
- » \$20.00 PSF
- » Term thru September 30, 2029
- » Furniture available

BUILDING FEATURES

- » Premier location
- » Two passenger elevators per building
- » 24/7 security access
- » Dual fiber optic providers
- » Two passenger elevators per building
- » Walkable to restaurants, retail shops, hotels, apartments & Town Square Park



10 Offices



6 Workstations



1 Conference Room



IT Closet



Kitchen



Storage

PHOTOS

1900 MAIN STREET
SUITE 211 | 4,775 RSF



SOUTHPOINTE TOWNE CENTER

1900 MAIN STREET



MAIN STREET

RESTAURANTS

SHOPS

HOTELS

RESIDENCES

For more information, contact:

SAM MCGILL, SIOR, MCR

Managing Director

+1 412 391 2634

sam.mcgill@cushwake.com

RANDY MCCOMBS, SIOR

Managing Director

+1 412 391 0990

randy.mccombs@cushwake.com



**CUSHMAN &
WAKEFIELD**

©2025 Cushman & Wakefield. All rights reserved. The information contained in this communication is strictly confidential. This information has been obtained from sources believed to be reliable but has not been verified. NO WARRANTY OR REPRESENTATION, EXPRESS OR IMPLIED, IS MADE AS TO THE CONDITION OF THE PROPERTY (OR PROPERTIES) REFERENCED HEREIN OR AS TO THE ACCURACY OR COMPLETENESS OF THE INFORMATION CONTAINED HEREIN, AND SAME IS SUBMITTED SUBJECT TO ERRORS, OMISSIONS, CHANGE OF PRICE, RENTAL OR OTHER CONDITIONS, WITHDRAWAL WITHOUT NOTICE, AND TO ANY SPECIAL LISTING CONDITIONS IMPOSED BY THE PROPERTY OWNER(S). ANY PROJECTIONS, OPINIONS OR ESTIMATES ARE SUBJECT TO UNCERTAINTY AND DO NOT SIGNIFY CURRENT OR FUTURE PROPERTY PERFORMANCE.