



FOR LEASE ±10,044 SF

333 S. TEILMAN AVENUE

FRESNO, CA

JAMES GRIFFIN, LIC 01211790
+1 559 433 3531
james.griffin@cushwake.com



333 S. TEILMAN AVENUE

FRESNO, CA

Property Features

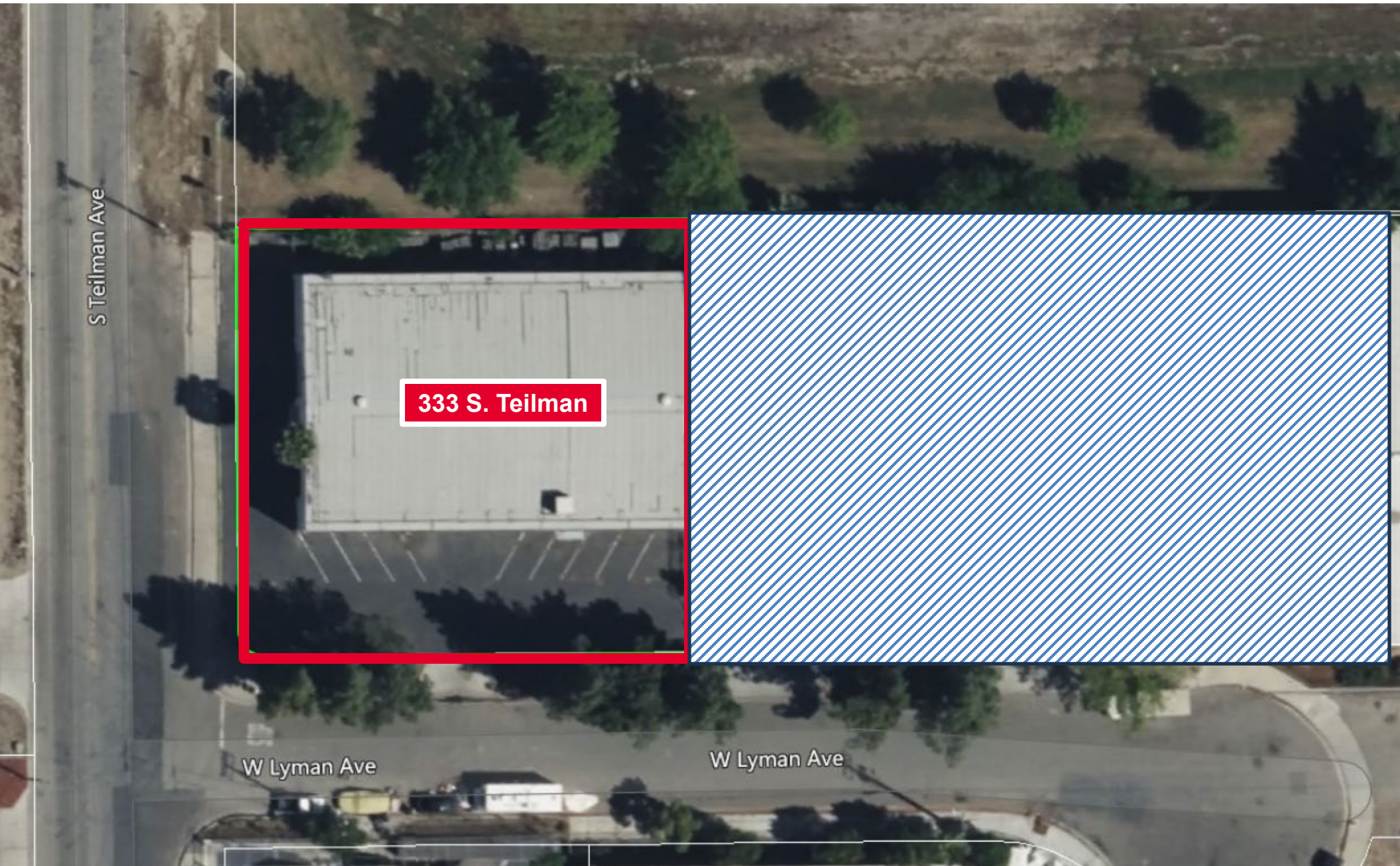
Expansive **10,044 square foot** industrial warehouse. With **9,044 square feet** dedicated to warehouse space and **1,000 square feet** of office area, this property is designed to maximize your operational efficiency. Ideally situated near Highways 99 & 180.

Building Size:	±10,044
Space Available:	±10,044
Office Area:	±1,000
Warehouse Area:	±9,044
Clear Height:	±19'
Loading:	Three ground level doors
Warehouse Lighting:	Fluorescent tube & can light
Column Spacing:	Clear Span
Electrical:	1,000 amps; 277/480 volt
Zoning:	M-1 (Light Industrial)
Lease Rate:	\$6,500/month/gross
Roof:	Lessor is replacing roof in Q2 2025.



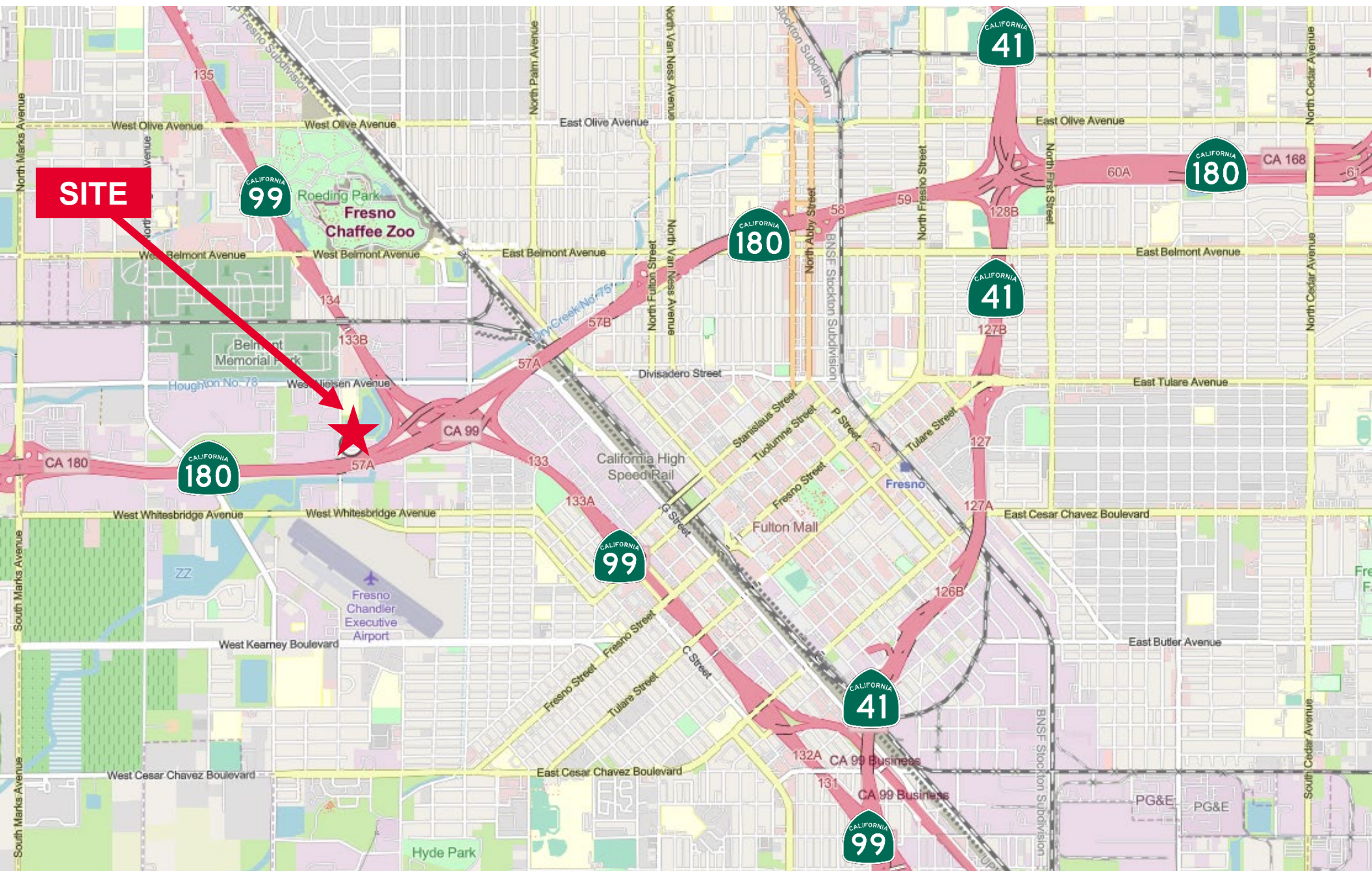
333 S. TEILMAN AVENUE

FRESNO, CA



333 S. TEILMAN AVENUE

FRESNO, CA







FOR MORE INFORMATION, CONTACT:

JAMES GRIFFIN

Director

+1 559 433 3531

james.griffin@cushwake.com

©2024 Cushman & Wakefield. All rights reserved. The information contained in this communication is strictly confidential. This information has been obtained from sources believed to be reliable but has not been verified. NO WARRANTY OR REPRESENTATION, EXPRESS OR IMPLIED, IS MADE AS TO THE CONDITION OF THE PROPERTY (OR PROPERTIES) REFERENCED HEREIN OR AS TO THE ACCURACY OR COMPLETENESS OF THE INFORMATION CONTAINED HEREIN, AND SAME IS SUBMITTED SUBJECT TO ERRORS, OMISSIONS, CHANGE OF PRICE, RENTAL OR OTHER CONDITIONS, WITHDRAWAL WITHOUT NOTICE, AND TO ANY SPECIAL LISTING CONDITIONS IMPOSED BY THE PROPERTY OWNER(S). ANY PROJECTIONS, OPINIONS OR ESTIMATES ARE SUBJECT TO UNCERTAINTY AND DO NOT SIGNIFY CURRENT OR FUTURE PROPERTY PERFORMANCE.

