

1375 EXPOSITION BLVD

Sacramento, CA

CLASS A OFFICE SPACE
FOR LEASE
±1,919 to ±9,781 RSF



PROPERTY INFORMATION

- Three-story Class A office building
- Beautiful two-story open lobby with contemporary design and high quality finishes
- Floor to ceiling glass along the window line
- **Suites Available for Immediate Occupancy**
- Prominent Monument signage available
- Located in the Point West business district just minutes from Arden Fair Mall, numerous hotels, restaurants and retail
- Easy access to Highway 80 and Downtown

A development of



JACKSON

Leasing opportunity presented by:



© Cushman & Wakefield. This information has been obtained from sources believed reliable. We have not verified it and make no guarantee, warranty or representation about it. Any projections, opinions, assumptions or estimates used are for example only and do not represent the current or future performance of the property. You and your advisors should conduct a careful, independent investigation of the property to determine to your satisfaction the suitability of the property for your needs.

1375 EXPOSITION BLVD Sacramento, CA

A development of



JACKSON
PROPERTIES, INC.



KEVIN PARTINGTON

Executive Director

916.288.4807

Lic. No. 01199010

kevin.partington@cushwake.com

KRIS KALMBACH

Senior Director

916.288.4421

Lic. No. 01436668

kris.kalmbach@cushwake.com

BLAKE BATULA

Associate

916.288.4423

Lic. No. 01948319

blake.batula@cushwake.com



**CUSHMAN &
WAKEFIELD**

400 Capitol Mall, Suite 1800
Sacramento, CA 95814

Lic. No. 00616335

www.cushmanwakefield.com

© Cushman & Wakefield. This information has been obtained from sources believed reliable. We have not verified it and make no guarantee, warranty or representation about it. Any projections, opinions, assumptions or estimates used are for example only and do not represent the current or future performance of the property. You and your advisors should conduct a careful, independent investigation of the property to determine to your satisfaction the suitability of the property for your needs.



Suite 102

±9,275 RSF TOTAL



NOT TO SCALE

KRIS KALMBACH

Senior Director

916.288.4421

Lic. No. 01436668

kris.kalmbach@cushwake.com

KEVIN PARTINGTON

Executive Director

916.288.4807

Lic. No. 01199010

kevin.partington@cushwake.com

BLAKE BATULA

Associate

916.288.4823

Lic. No. 01948319

blake.batula@cushwake.com



CUSHMAN &
WAKEFIELD

400 Capitol Mall, Suite 1800

Sacramento, CA 95814

Lic. No. 00616335

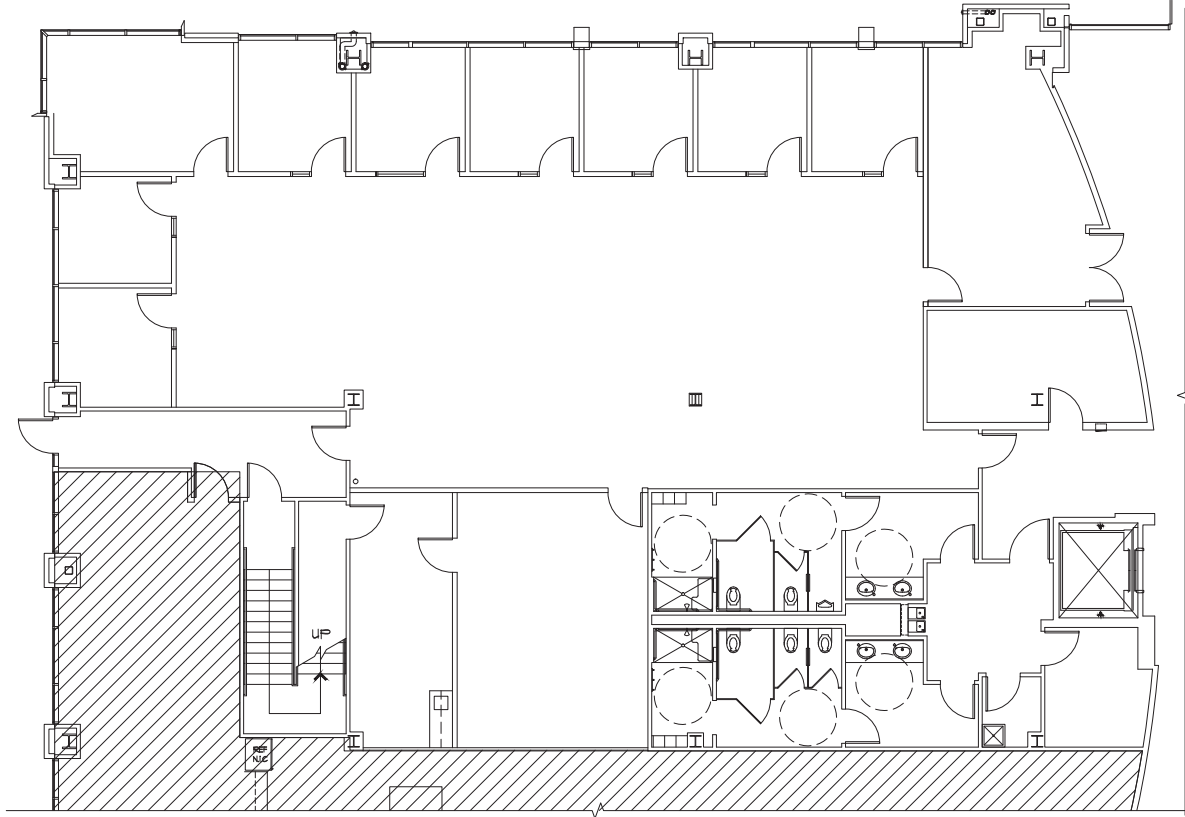
www.cushmanwakefield.com



Suite 109

±4,399 RSF TOTAL

DIVISIBLE



NOT TO SCALE

KRIS KALMBACH

Senior Director

916.288.4421

Lic. No. 01436668

kris.kalmbach@cushwake.com

KEVIN PARTINGTON

Executive Director

916.288.4807

Lic. No. 01199010

kevin.partington@cushwake.com

BLAKE BATULA

Associate

916.288.4823

Lic. No. 01948319

blake.batula@cushwake.com



CUSHMAN &
WAKEFIELD

400 Capitol Mall, Suite 1800

Sacramento, CA 95814

Lic. No. 00616335

www.cushmanwakefield.com

1375 EXPOSITION BLVD
Sacramento, CA

A development of

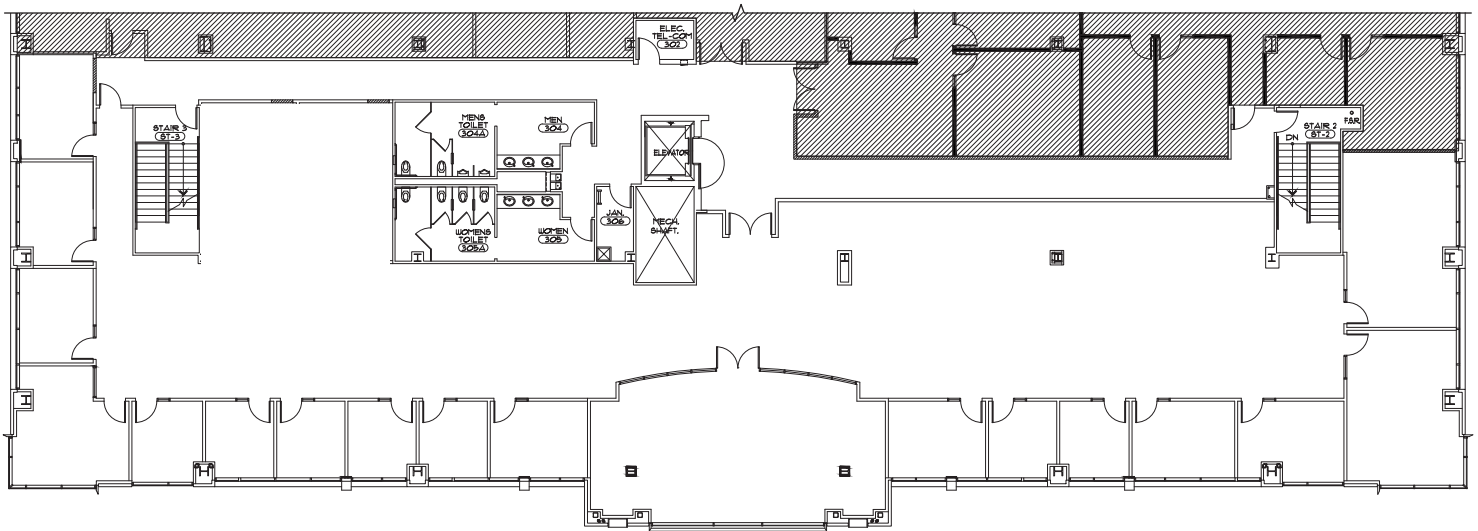


JACKSON
PROPERTIES, INC.

Suite 300

±9,781 RSF TOTAL

DIVISIBLE DOWN TO ±1,500 SF



NOT TO SCALE

KRIS KALMBACH

Senior Director

916.288.4421

Lic. No. 01436668

kris.kalmbach@cushwake.com

KEVIN PARTINGTON

Executive Director

916.288.4807

Lic. No. 01199010

kevin.partington@cushwake.com

BLAKE BATULA

Associate

916.288.4823

Lic. No. 01948319

blake.batula@cushwake.com



CUSHMAN &
WAKEFIELD

400 Capitol Mall, Suite 1800

Sacramento, CA 95814

Lic. No. 00616335

www.cushmanwakefield.com