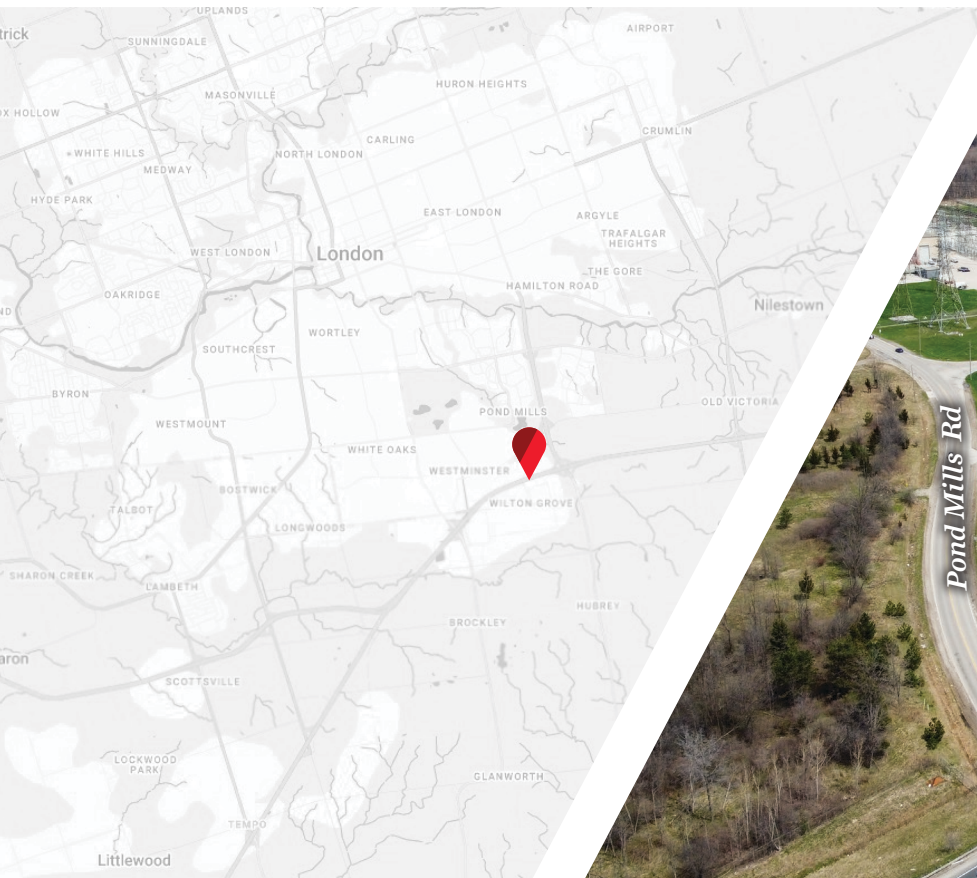




**CUSHMAN &  
WAKEFIELD**

Southwestern Ontario

**FOR LEASE**  
**3 BUCHANAN COURT**  
*London, ON*



**PRIME INDUSTRIAL AND OFFICE SPACE AVAILABLE**

**ASKING RENT**

**\$10.50 PSF NET**

**ADDITIONAL RENT**

**\$2.95 PSF (EST.)**

**ZONING**

**LI2,LI3,LI7**

**JAMESON LAKE**

*Sales Representative*

519 438 8548

jameson.lake@cushwakeswo.com

**MICHAEL JOHNSON**

*Sales Representative*

519 438 7325

michael.johnson@cushwakeswo.com

**CUSHMAN & WAKEFIELD  
SOUTHWESTERN ONTARIO**

850 Medway Park Dr, Suite 201

London, Ontario N6G 5G6

**www.cushwakeswo.com**

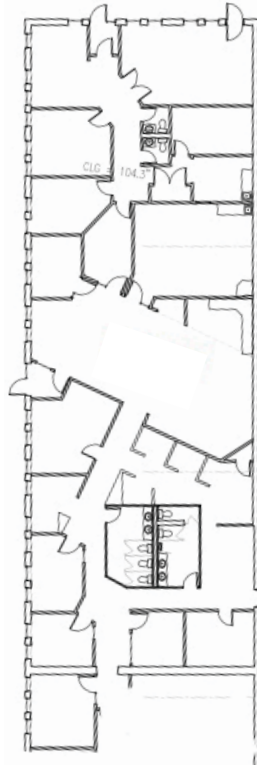
©2025 Cushman & Wakefield Southwestern Ontario, Real Estate Brokerage, Independently Owned and Operated. A Member of the Cushman & Wakefield Alliance.  
This information has been obtained from sources believed to be reliable but has not been verified. No warranty or representation, express or implied, is made as to the condition of the property (or properties) referenced herein or as to the accuracy or completeness of the information contained herein, and same is submitted subject to errors, omissions, change of price, rental or other conditions, withdrawal without notice, and to any special listing conditions imposed by the property owner(s). Any projections, opinions or estimates are subject to uncertainty and do not signify current or future property performance. All rights reserved.

# ABOUT THE PROPERTY

An industrial unit and an office space available in a well-maintained multi-tenant building, offering exceptional Highway 401 exposure located within the Westminster Industrial area.

UNIT	AVAILABLE SPACE	ASKING RENT	ADDITIONAL RENT	ADDITIONAL COMMENTS
OFFICE	6,799 SF	\$10.50 PSF Net	\$2.95 PSF (Est.)	<ul style="list-style-type: none"><li>• Prime office space offering a functional layout including a reception area, spacious private offices, a boardroom, open work areas and a kitchen</li></ul>
2	5,624 SF	\$10.50 PSF Net	\$2.95 PSF (Est.)	<ul style="list-style-type: none"><li>• Prime industrial space including LED lighting, grade height loading and a fenced yard</li><li>• <b>Clear Height: 14'8"</b></li><li>• <b>Grade Level Door: 1</b></li><li>• <b>Power:</b><ul style="list-style-type: none"><li>» Three Phase</li><li>» 600 Volts</li></ul></li></ul>

## FLOOR PLAN | OFFICE



**JAMESON LAKE**  
Sales Representative

519 438 8548  
jameson.lake@cushwakeswo.com

**MICHAEL JOHNSON**  
Sales Representative

519 438 7325  
michael.johnson@cushwakeswo.com

**CUSHMAN & WAKEFIELD**  
**SOUTHWESTERN ONTARIO**  
850 Medway Park Dr, Suite 201  
London, Ontario N6G 5G6  
[www.cushwakeswo.com](http://www.cushwakeswo.com)



**CUSHMAN &  
WAKEFIELD**

Southwestern Ontario

©2025 Cushman & Wakefield Southwestern Ontario, Real Estate Brokerage, Independently Owned and Operated. A Member of the Cushman & Wakefield Alliance. This information has been obtained from sources believed to be reliable but has not been verified. No warranty or representation, express or implied, is made as to the condition of the property (or properties) referenced herein or as to the accuracy or completeness of the information contained herein, and same is submitted subject to errors, omissions, change of price, rental or other conditions, withdrawal without notice, and to any special listing conditions imposed by the property owner(s). Any projections, opinions or estimates are subject to uncertainty and do not signify current or future property performance. All rights reserved.