

100,394 SF

OFFICE / MANUFACTURING FACILITY

FOR LEASE

7910
TRIAD CENTER DRIVE

GREENSBORO, NC 27409



100,394 SF

OFFICE / MANUFACTURING FACILITY

7910 TRIAD CENTER DRIVE, GREENSBORO, NC 27409

| | |
|---------------------|---|
| Total Size: | 100,394 SF on 14.15 Acres |
| Year Built: | 1982, expansion 1985, and renovation 1995 |
| Construction: | Masonry façade over steel frame construction |
| Zoning: | LI - Light Industrial |
| Parking: | +/- 280 parking spaces w/ 7 handicapped spaces |
| Ceiling Height: | 13'1" to 15'5" |
| Dock High Doors: | Three (3) |
| Electrical Service: | 4,000 amps – Four (4) transformers » One (1) 500 Kva » Two (2) 1,000 Kva » One (1) 1,500 Kva |
| HVAC Information: | Fully Conditioned |
| Access: | Off Hwy. 68 in the northwest quadrant of the I-40 and Hwy. 68 interchange |

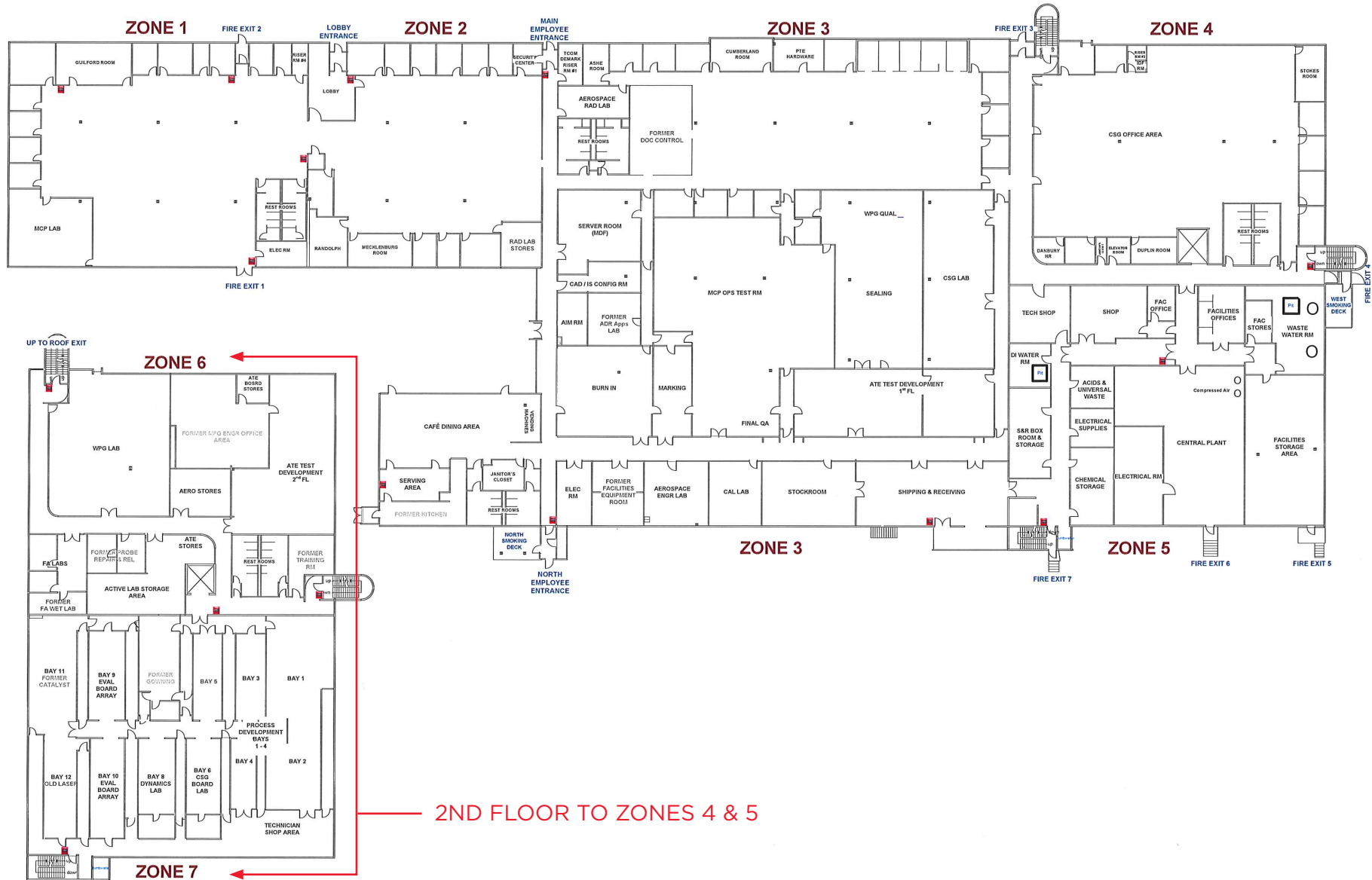


100,394 SF

OFFICE / MANUFACTURING FACILITY

7910 TRIAD CENTER DRIVE, GREENSBORO, NC 27409

FLOOR PLAN



100,394 SF

OFFICE / MANUFACTURING FACILITY

7910 TRIAD CENTER DRIVE, GREENSBORO, NC 27409

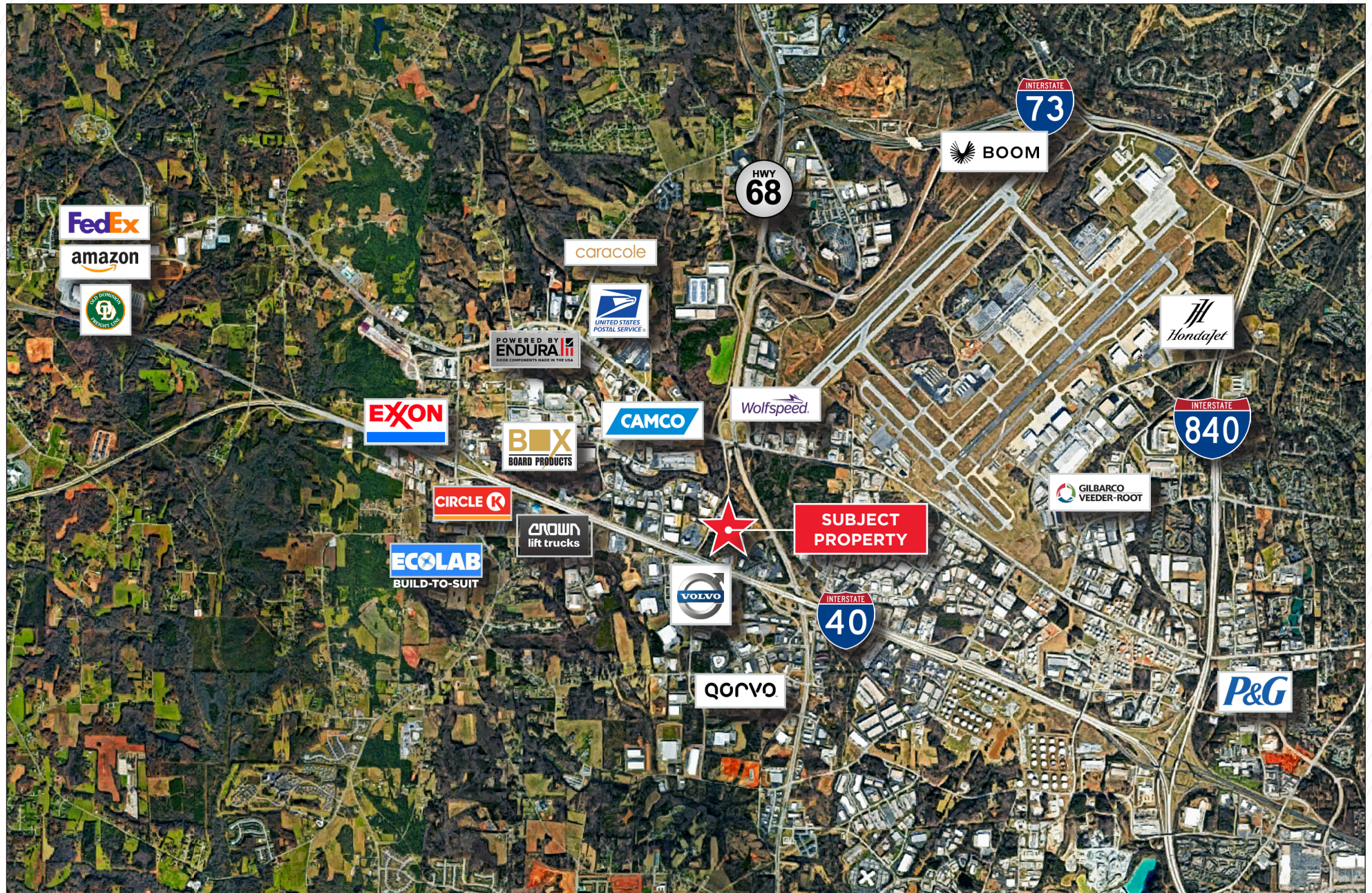


100,394 SF

OFFICE / MANUFACTURING FACILITY

7910 TRIAD CENTER DRIVE, GREENSBORO, NC 27409

LOCATION W/ SURROUNDING BUSINESSES



100,394 SF

OFFICE / MANUFACTURING FACILITY

7910 TRIAD CENTER DRIVE, GREENSBORO, NC 27409

LOCATOR MAP



7910 TRIAD CENTER DR

GREENSBORO, NC 27409

FOR MORE INFORMATION, CONTACT:

JASON OFSANKO

Executive Director

+1 336 812 3300

jason.ofsanko@cushwake.com

JORDAN MITCHELL

Senior Director

+1 336 201 0495

jordan.mitchell@cushwake.com

©2024 Cushman & Wakefield. All rights reserved. The material in this presentation has been prepared solely for information purposes, and is strictly confidential. Any disclosure, use, copying or circulation of this presentation (or the information contained within it) is strictly prohibited, unless you have obtained Cushman & Wakefield's prior written consent. The views expressed in this presentation are the views of the author and do not necessarily reflect the views of Cushman & Wakefield. Neither this presentation nor any part of it shall form the basis of, or be relied upon in connection with any offer, or act as an inducement to enter into any contract or commitment whatsoever. NO REPRESENTATION OR WARRANTY IS GIVEN, EXPRESS OR IMPLIED, AS TO THE ACCURACY OF THE INFORMATION CONTAINED WITHIN THIS PRESENTATION, AND CUSHMAN & WAKEFIELD IS UNDER NO OBLIGATION TO SUBSEQUENTLY CORRECT IT IN THE EVENT OF ERRORS.

