

# 207 N CHELTON RD

COLORADO SPRINGS, CO 80909

Automotive Shop Space **INDUSTRIAL**



**FOR LEASE | SUITE 140 4,100 SF**



**CUSHMAN &  
WAKEFIELD**

**Colorado Springs  
Commercial**



# 207 N CHELTON RD

COLORADO SPRINGS, CO 80909



**10,240 SF**  
BUILDING SIZE



**1.08 ACRES**  
SITE AREA



**20'**  
CLEAR HEIGHT



**3-PHASE**  
POWER



**(1) 12' x 12' OHD**  
**(1) 12' x 16' OHD**  
TOTAL LOADING



**MX-L**  
ZONING



**4,100 SF**  
AVAILABLE SPACE



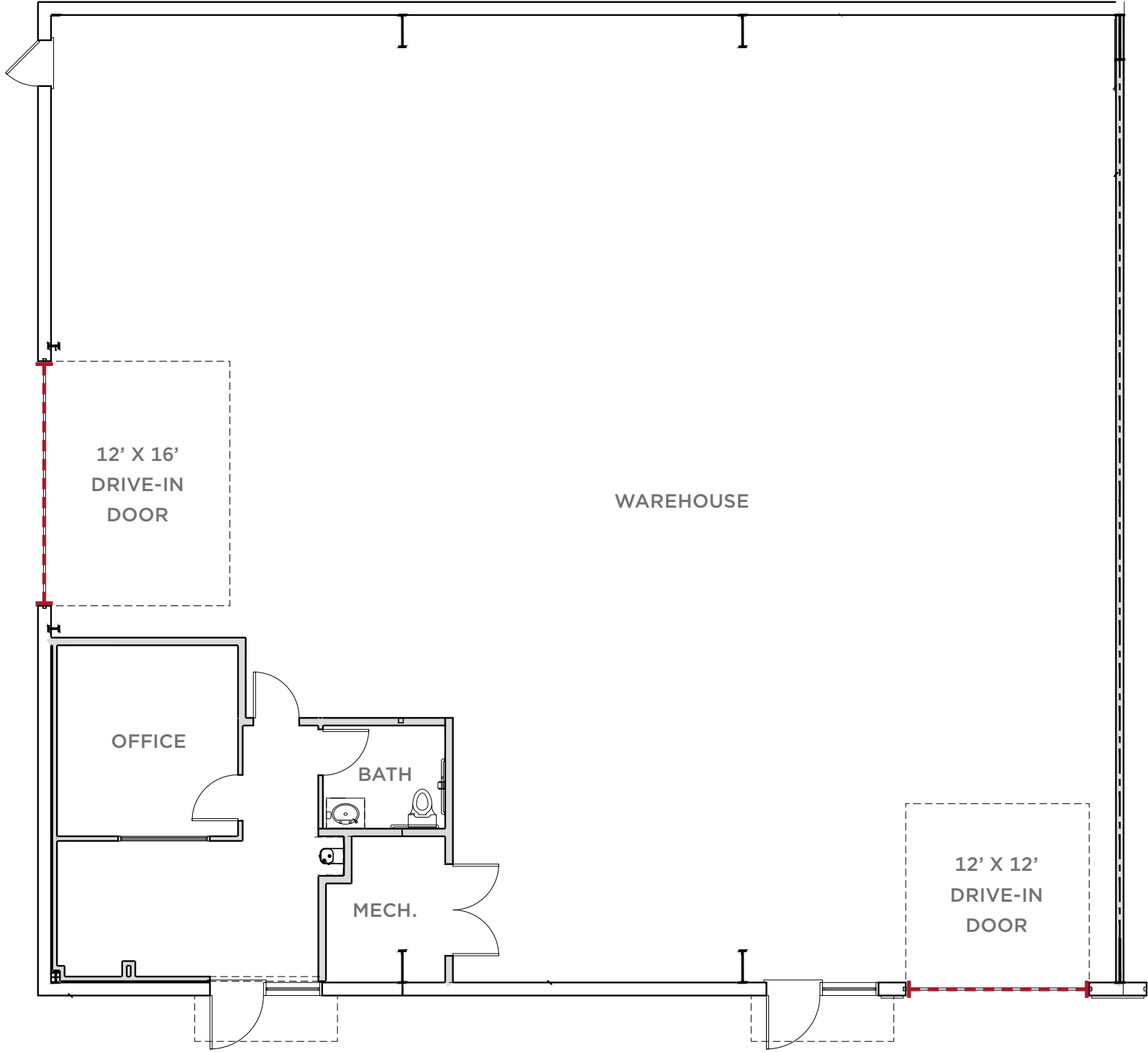
**\$15.00 PER RSF NNN**  
LEASE RATE



**\$4.36/SF (2025 EST.)**  
EXPENSES

## MODERN FUNCTIONALITY IN A PRIME CENTRAL LOCATION

Built in 2021, the property features two oversized overhead doors, high ceilings, and a flexible open layout ideal for light industrial, warehouse, or distribution needs. Its convenient location provides quick access to major roads, making it easy to reach customers, suppliers, and local amenities. This is a perfect opportunity for growing businesses seeking clean, efficient, and well-located space.



FLOORPLAN

207 N CHELTON RD  
COLORADO SPRINGS, CO 80909



**CUSHMAN &  
WAKEFIELD**

**Colorado Springs  
Commercial**

## Contact

**PATRICK KERSCHER**

Sr Managing Director

+1 719 418 4065

[patrick@coscommercial.com](mailto:patrick@coscommercial.com)