

100 ASPEN HILL ROAD

SOMERVILLE, NEW JERSEY 08876



FOR LEASE ±110,000 SF

PROPERTY INFORMATION

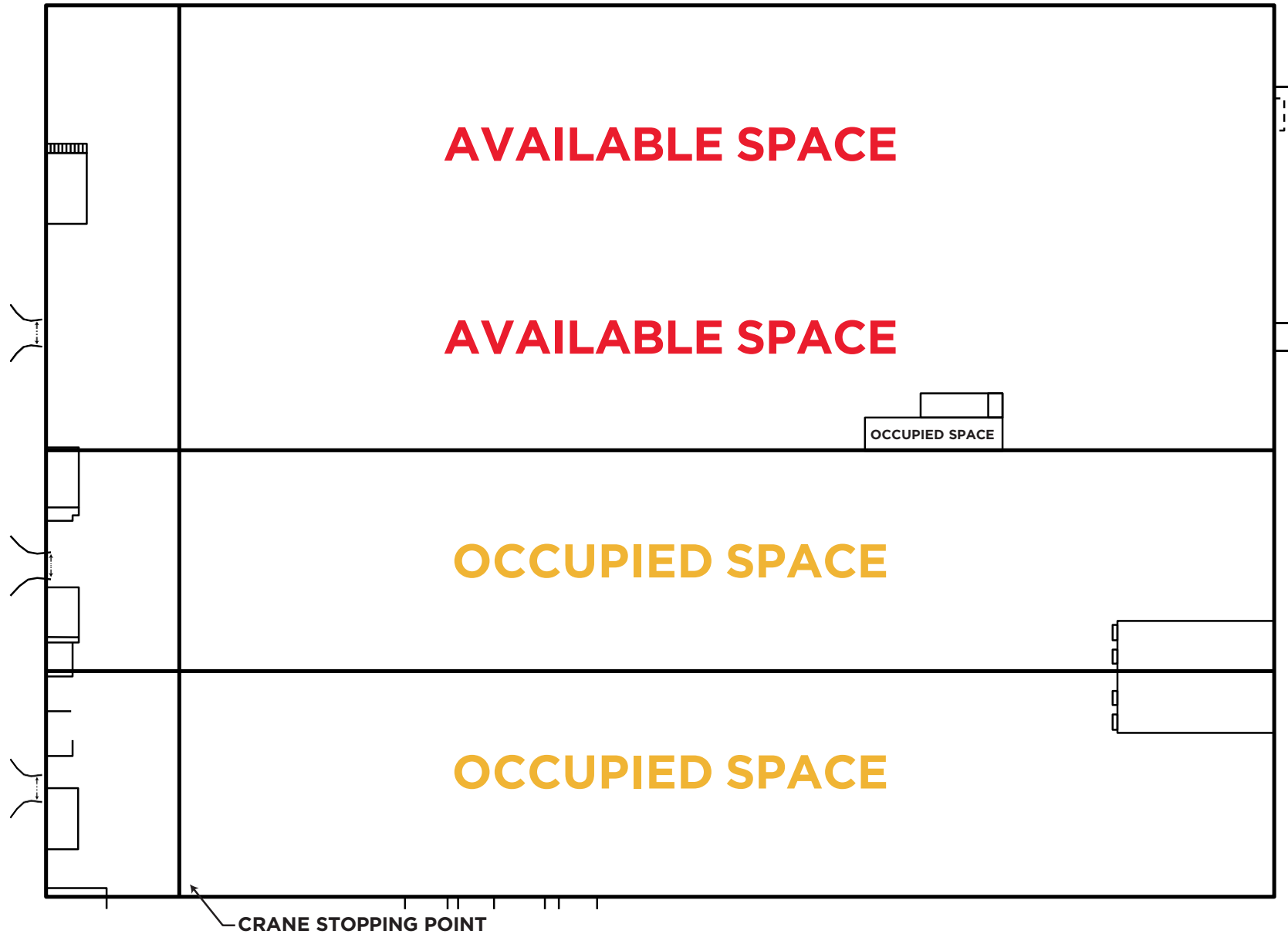
- **Total Size:** 226,211 SF on 20 Acres
- **Total Available:** ±110,000 SF
- **Office Area:** Flexible - Up to 4,900 SF
- **Ceiling Height:** 28'
- **Loading Doors:** 4 Oversized Drive-in Doors w/ Drive Thru capability
- **Column Spacing:** 30' x 100'
- **Power:** Heavy Power
- **Sprinkler:** Wet System
- **Taxes & CAM:** \$3.30
- **Asking Lease Rate:** Call for Pricing
- **Comments:**
 - Available Immediately
 - Long Term Sublease - Flexible Term
 - Fully Serviced Cranes in Place
 - 1 X 25 Ton Fully Serviced Crane in place
 - 101' X 553' Crane way
 - Multiple Auxiliary Cranes in place



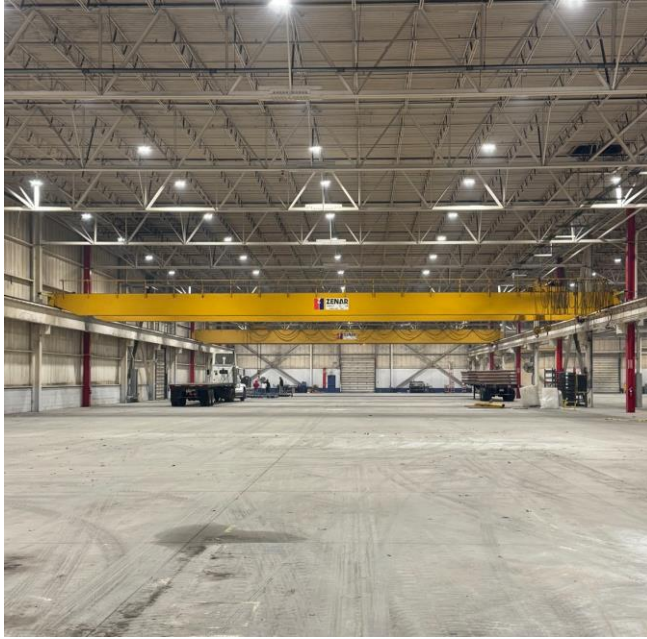
SITEPLAN



FLOORPLAN



PROPERTY PHOTOS



DRIVETIME MAP

Location	Distance
Rt 202/206	3.4 Miles
287 Exit 14A	6.1 Miles
I-78 Exit 29	8.4 Miles
Outerbridge Crossing	25.8 Miles
Newark Int'l	35.9 Miles
Port Newark	36.2 Miles

CONTACT

JONATHAN WINGE
+1 732 243 3114
jack.winge@cushwake.com

CHARLES FERN
+1 732 243 3101
chuck.fern@cushwake.com

JASON BARTON, SIOR
+1 732 243 3104
jason.barton@cushwake.com

99 Wood Avenue South, 8th Floor
Iselin, NJ 08830 | +1 732 623 4700

One Meadowlands Plaza, 7th Floor
East Rutherford, NJ 07073 | +1 201 935 4000

cushmanwakefield.com

©2025 Cushman & Wakefield. All rights reserved. The information contained in this communication is strictly confidential. This information has been obtained from sources believed to be reliable but has not been verified. NO WARRANTY OR REPRESENTATION, EXPRESS OR IMPLIED, IS MADE AS TO THE CONDITION OF THE PROPERTY (OR PROPERTIES) REFERENCED HEREIN OR AS TO THE ACCURACY OR COMPLETENESS OF THE INFORMATION CONTAINED HEREIN, AND SAME IS SUBMITTED SUBJECT TO ERRORS, OMISSIONS, CHANGE OF PRICE, RENTAL OR OTHER CONDITIONS, WITHDRAWAL WITHOUT NOTICE, AND TO ANY SPECIAL LISTING CONDITIONS IMPOSED BY THE PROPERTY OWNER(S). ANY PROJECTIONS, OPINIONS OR ESTIMATES ARE SUBJECT TO UNCERTAINTY AND DO NOT SIGNIFY CURRENT OR FUTURE PROPERTY PERFORMANCE.

