

2878 PRUNE AVE.

FREMONT, CA



CUSHMAN &
WAKEFIELD

±7,970 SF | SUITE F&R
AUTO SERVICE SHOP FOR LEASE

MIKE BAKER

408-615-3406

mike.baker@cushwake.com

LIC #01884037

SUITE F & R

HIGHLIGHTS

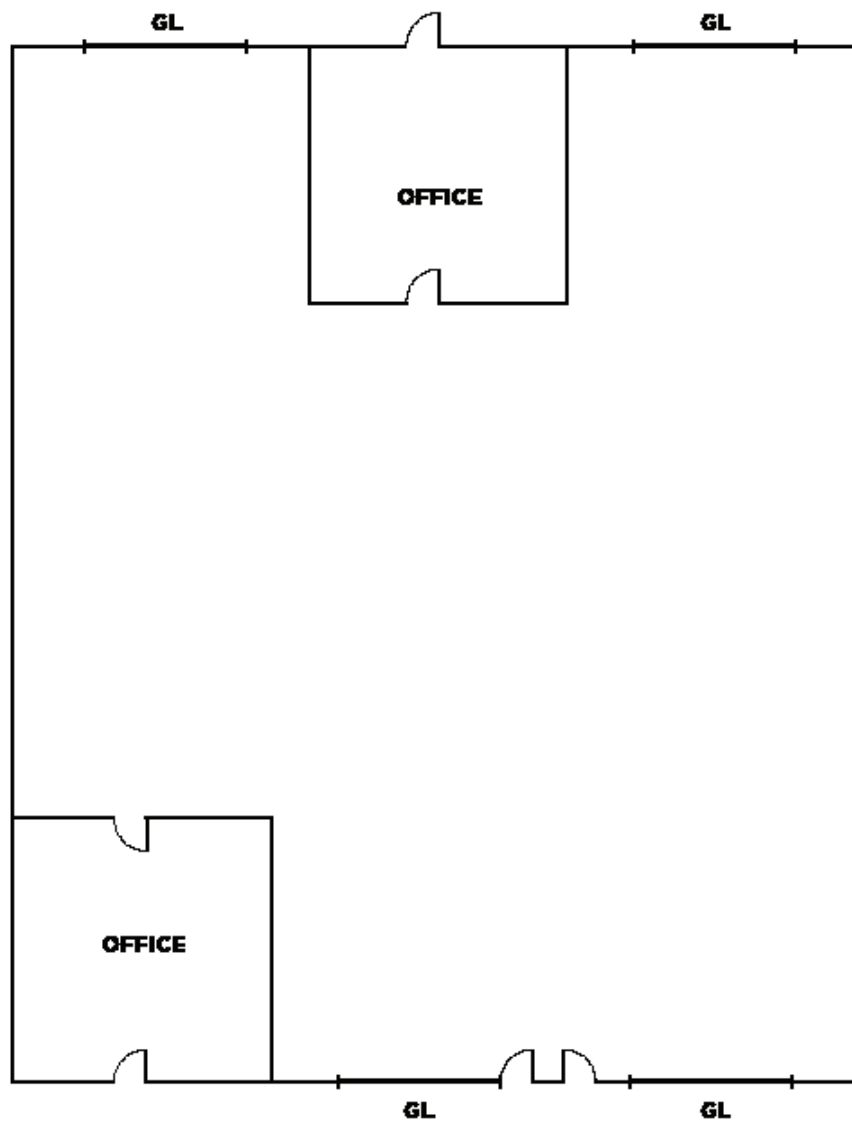
2878 PRUNE AVE.

- Automotive Service Only
- ±7,970 SF
- Two (2) Offices
- Four (4) 10' x 16' Grade Level Doors
- 18' Clear Height
- Sprinklered
- Excellent Access to I-680 and I-880
- Close to Numerous Retail Amenities
- Call to Tour



FLOOR PLAN

2878 PRUNE AVE.
±7,970 SF | Suite F&R



Not to Scale

NEARBY AMENITIES

2878 PRUNE AVE.
FREMONT, CA

