



BALENTINE
OFFICE PARK

OFFICE SPACE AVAILABLE

39899 BALENTINE DRIVE
NEWARK, CALIFORNIA





Premium Space COMPETITIVELY PRICED

- New reputable broker friendly ownership
- Modern interior renovations
- Mixed-tenant building with the ability to cater to all business types and sizes

Making Business Easy

Balentine Office Park is a three story, 113,255 SF premium office building in Newark, California. Featuring an unparalleled modern building renovation, immediate access to the freeway, and numerous walking distance amenities, Balentine Office Park offers a unique experience that makes business easy.

PROJECT HIGHLIGHTS

- Modern, Collaborative Lobby
- Contemporary Conference Room with Full Audio Visual Capabilities
- State-of-the-Art Fitness Facility with an Array of the Latest Equipment
- On-site Property Management
- Comcast High Speed Internet Service
- Indoor / Outdoor Collaborative Setting
- Ample Parking
- New Monument Signage Available

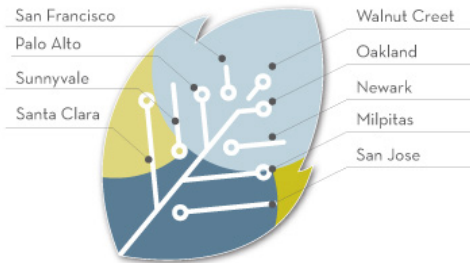
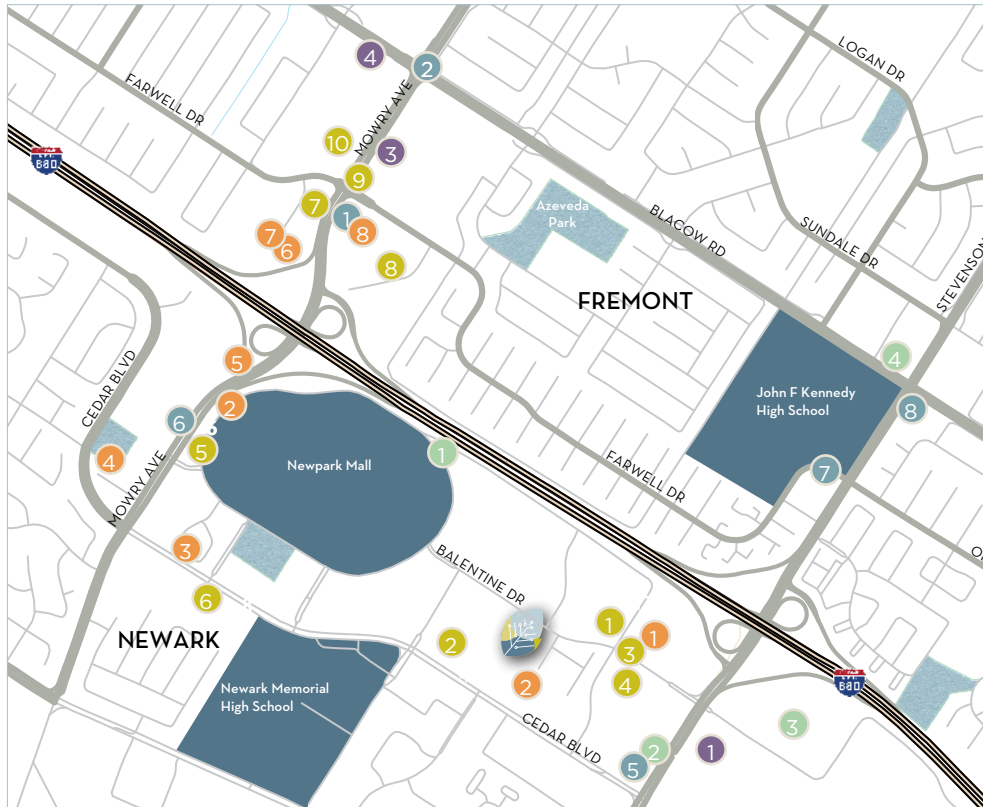


Beautiful Interiors
NEWLY RENOVATED

Balentine Office Park features a modern, collaborative lobby with timeless mid-century touches. Expanded seating areas with easy access to the outdoor courtyard and ponds create a great “indoor/outdoor” feel and provide perfect gathering places for impromptu meetings and other activities.

39899 BALENTINE DRIVE
NEWARK, CALIFORNIA

Your Business Central



Amenities On-site 12⁺

- 24-Hour Fitness Studio
- Outdoor Space and Courtyard
- Modern Conference Room
- Plenty of On-site Parking

Dining

- 1 Chuck E Cheese, Halal Street Hot Pot, Starbucks, Com Tam Thanh, Togos, Mehran Restaurant, Isla Restaurant
- 2 7-Eleven, LAC Coffee & Matcha, Bay-side Poke, The Breeze Cafe, The Ultimate Deli & Cafe & Catering, Papa Johns Pizza, Teaspoon Newark, Bonchon
- 3 Fu Lam Moon, Hungry Cow KBBQ, SOHO Modern Japanese, Sizzling Lunch, Bruster's Real Ice Cream, Mr. Sun Tea
- 4 World Gourmet Buffet, Special Noodle, Shanghai Delight, Ume Tea
- 5 McDonald's, Lazy Dog Restaurant, Ray's Crab Shack, BJ's Restaurant & Brewhouse
- 6 Jack in the Box, Timog, Icicles, Long Men Bay Hotpot, Noodle Story, Happy Lemon, TP Tea, Cousin Cafe, Taco Bell, Little Caesars Pizza, Sia Fusion, Tea Top
- 7 Starbucks, Country Way, Chaat Bhavan, Nircaanaah Ice Cream, Kabob Restaurant
- 8 Olive Garden, City Sports Club
- 9 Denny's, Taste of India, Wendy's, Le Moose Crepe Cafe, Starbucks, Satomi Sushi
- 10 Nation's Giant Hamburgers, Chick-fil-A, Dunkin', Paris Baguette, Black Bear Diner

Banking

- 1 East West Bank
- 2 Citibank
- 3 Bank of the West
- 4 Wells Fargo

Lodging

- 1 Hilton Hotel Newark
- 2 Town Place Suites
- 3 Chase Suite Hotel
- 4 Comfort Inn
- 5 Motel 6, EZ 8
- 6 Residence Inn
- 7 Extended Stay America
- 8 Best Western

Gas Stations

- 1 Chevron
- 2 Valero
- 3 Chevron
- 4 76
- 5 Shell
- 6 Arco

Other Services

- 1 Newark Mall, AMC Dolby Cinema Imax, Costco Wholesale

Amenities Nearby 50⁺



The Space

Everything Your Business Needs

We have several sized suites to accommodate your company's needs, with room to grow!

Suite 102	1,150 SF
Suite 355	1,193 SF
Suite 190	1,274 SF
Suite 212	1,680 SF
Suite 225	1,700 SF
Suite 370	1,702 SF
Suite 335	2,245 SF
Suite 210	2,303 SF
Suite 220	2,352 SF
Suite 128	2,440 SF
Suite 345	3,283 SF
Suite 161	7,628 SF
Suite 161/190	up to 8,902 SF

- Efficient layout with beautiful exterior views
- Large windows and expansive window line offers plenty of natural light
- Flexible space for all sizes

For more information, please contact:

Walt Stephenson
408.615.3458
walt.stephenson@cushwake.com

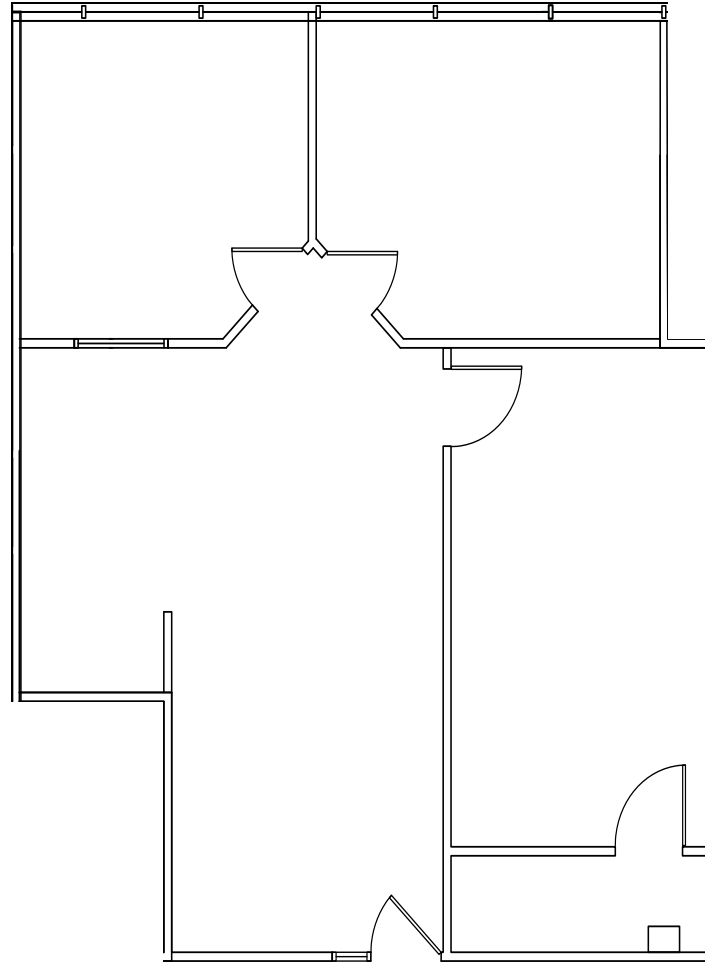
Scott Dever
408.615.3457
scott.dever@cushwake.com

Contemporary On-Site Amenities



FLOOR PLAN

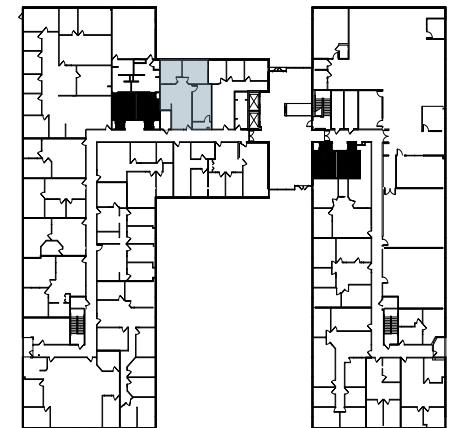
[◀ Back to Suite List](#)



Suite 102

1,150 SF

Available Now



For more information, please contact:

Walt Stephenson

408.615.3458

walt.stephenson@cushwake.com

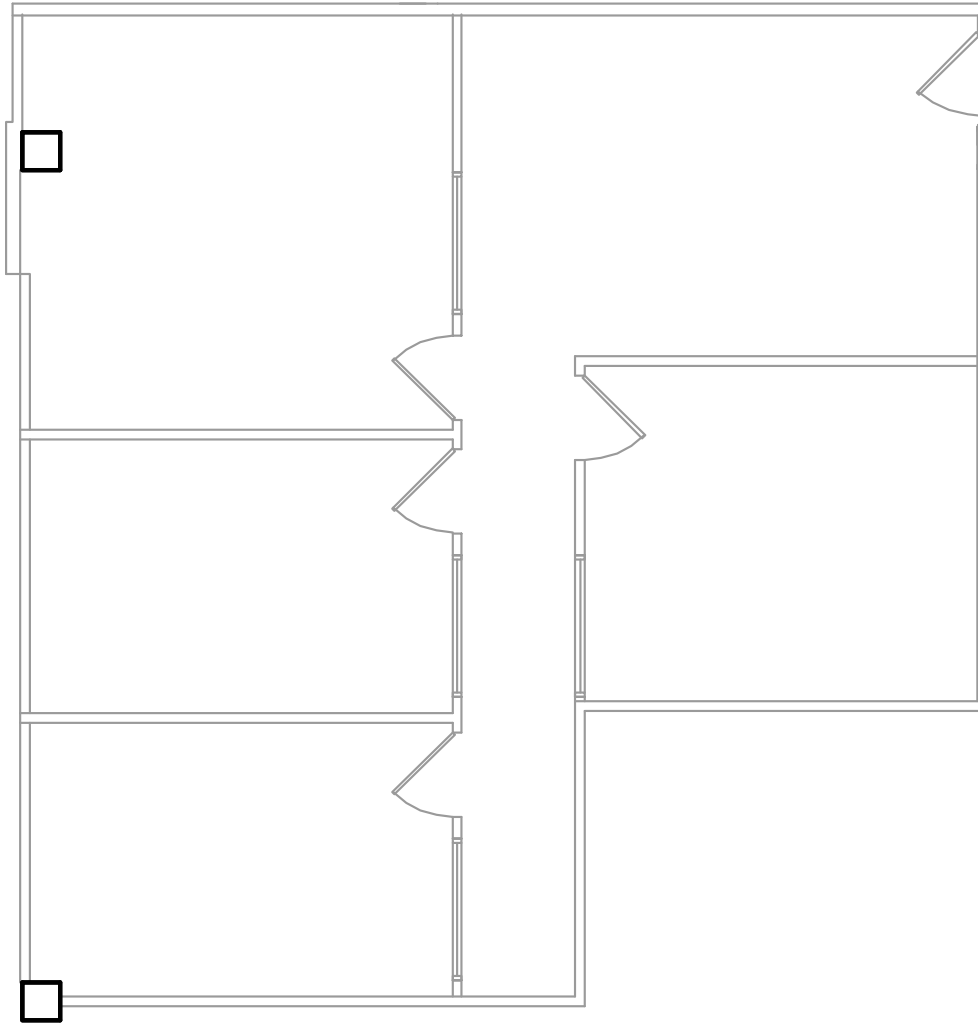
Scott Dever

408.615.3457

scott.dever@cushwake.com

FLOOR PLAN

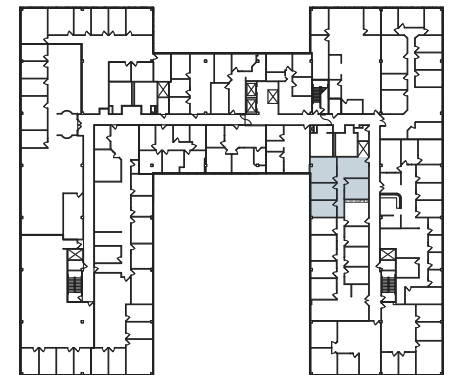
[◀ Back to Suite List](#)



Suite 355

1,193 SF

Available Now



For more information, please contact:

Walt Stephenson

408.615.3458

walt.stephenson@cushwake.com

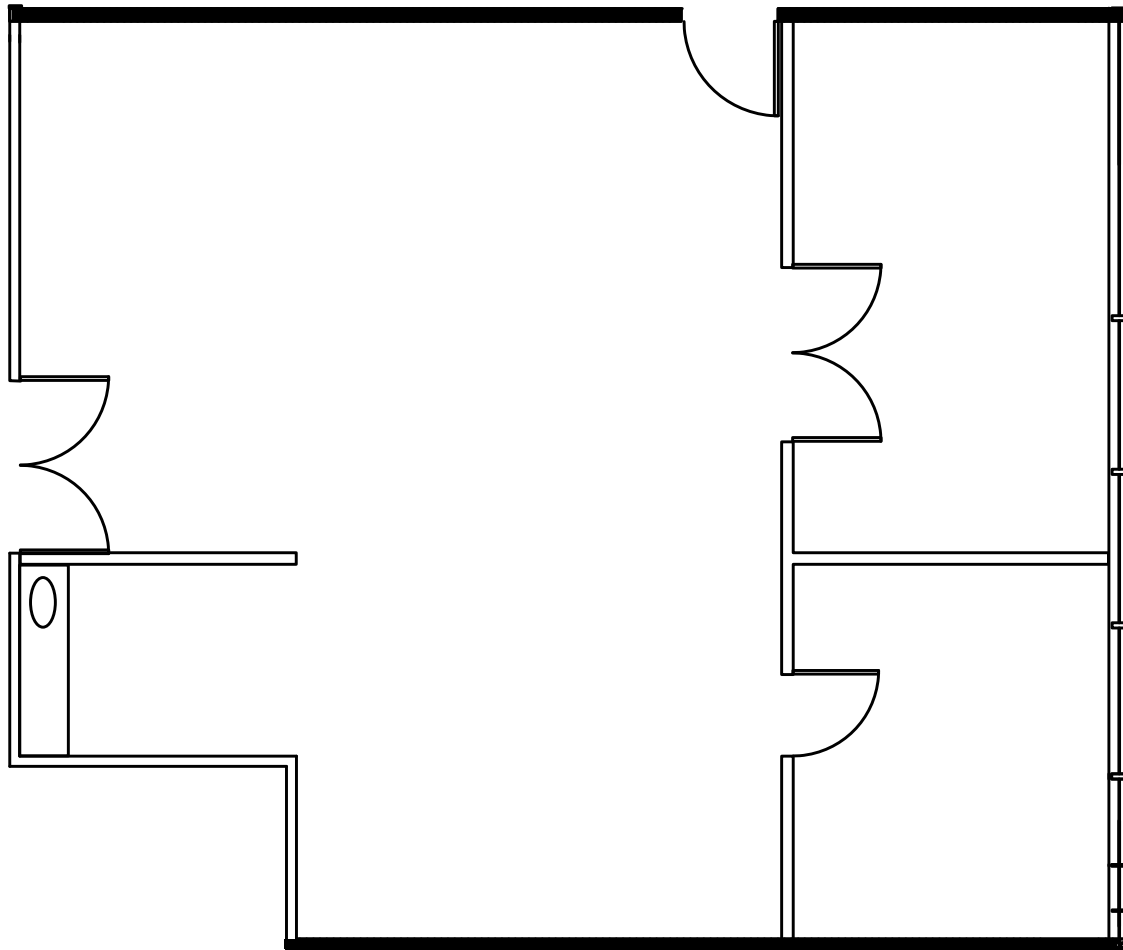
Scott Dever

408.615.3457

scott.dever@cushwake.com

FLOOR PLAN

[◀ Back to Suite List](#)

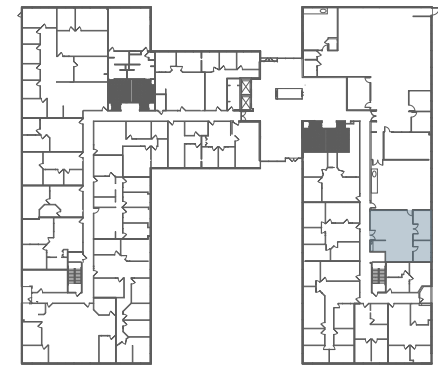


Suite 190

1,274 SF

Available Now

Contiguous to Suite 161



For more information, please contact:

Walt Stephenson

408.615.3458

walt.stephenson@cushwake.com

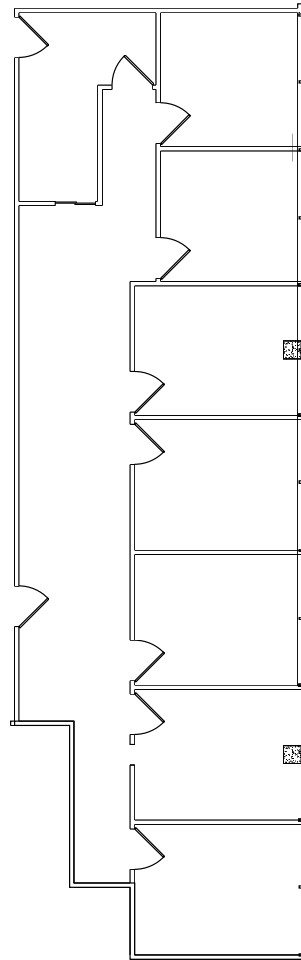
Scott Dever

408.615.3457

scott.dever@cushwake.com

FLOOR PLAN

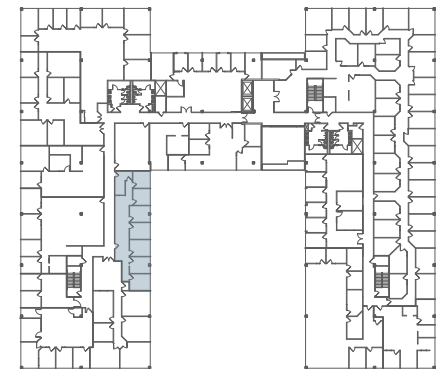
◀ Back to Suite List



Suite 212

1,680 SF

Available Now



For more information, please contact:

Walt Stephenson

408.615.3458

walt.stephenson@cushwake.com

Scott Dever

408.615.3457

scott.dever@cushwake.com

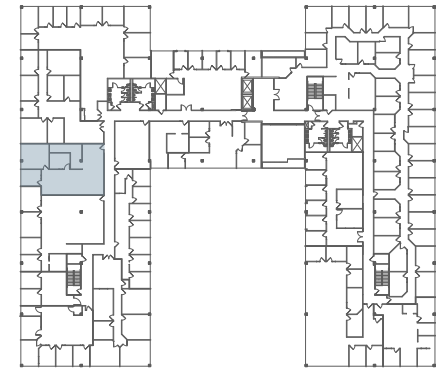
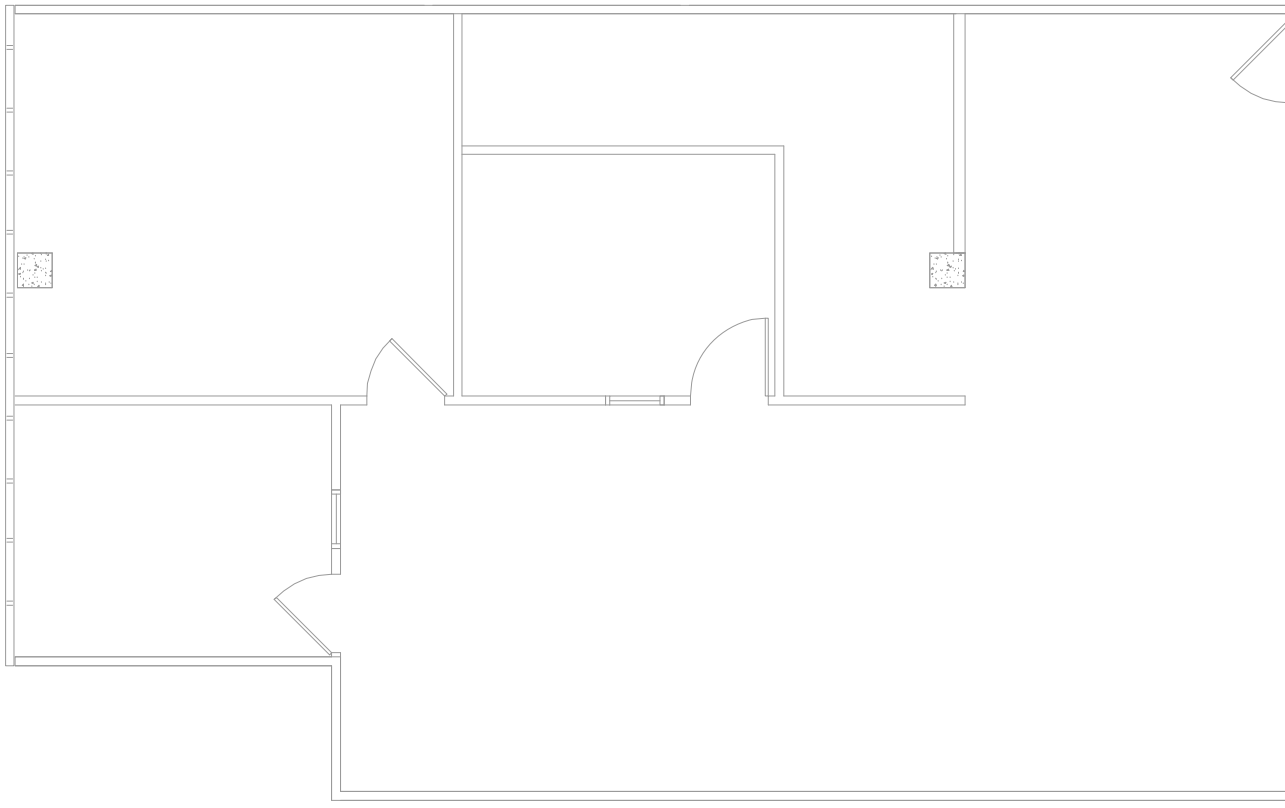
FLOOR PLAN

[◀ Back to Suite List](#)

Suite 225

1,700 SF

Available Now



For more information, please contact:

Walt Stephenson

408.615.3458

walt.stephenson@cushwake.com

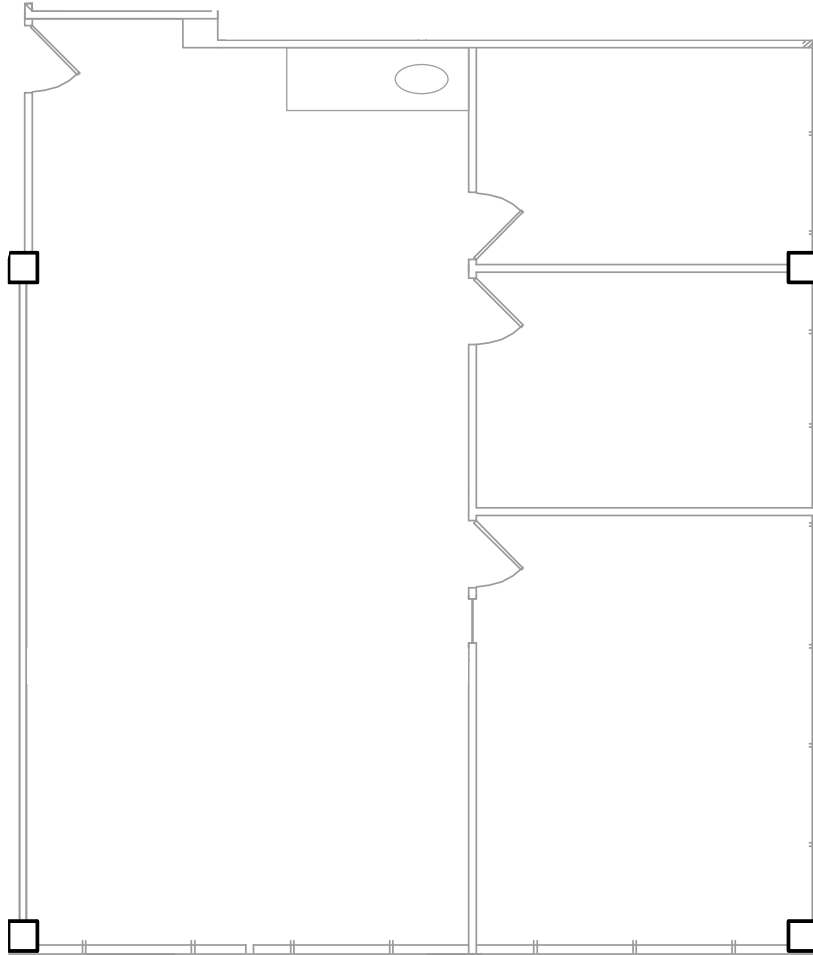
Scott Dever

408.615.3457

scott.dever@cushwake.com

FLOOR PLAN

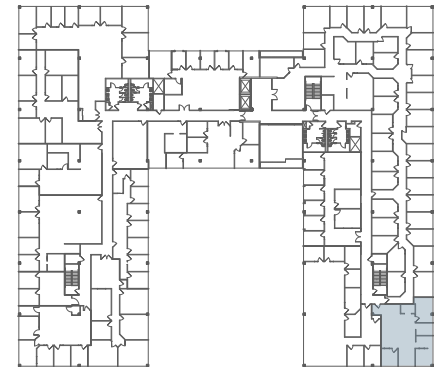
[◀ Back to Suite List](#)



Suite 370

1,702 SF

Available Now



For more information, please contact:

Walt Stephenson

408.615.3458

walt.stephenson@cushwake.com

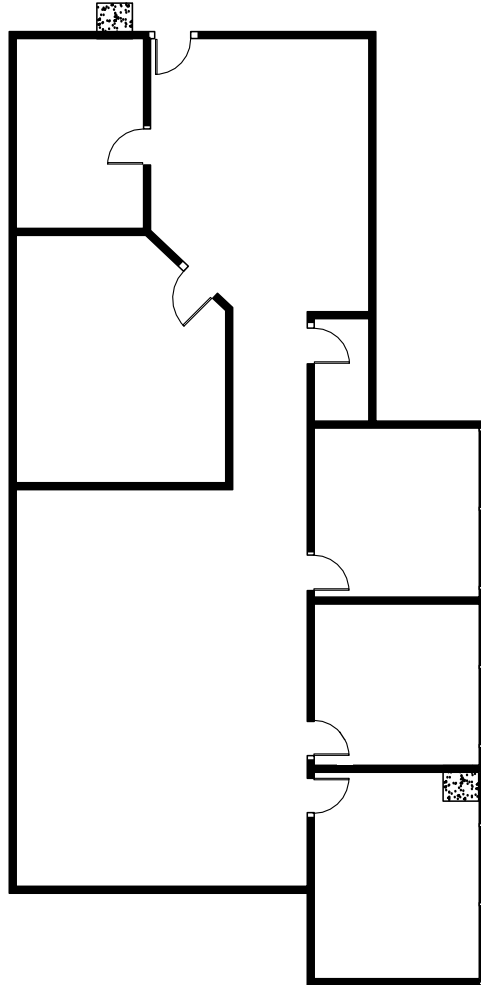
Scott Dever

408.615.3457

scott.dever@cushwake.com

FLOOR PLAN

◀ Back to Suite List



Suite 335

2,245 SF

Available Now



For more information, please contact:

Walt Stephenson

408.615.3458

walt.stephenson@cushwake.com

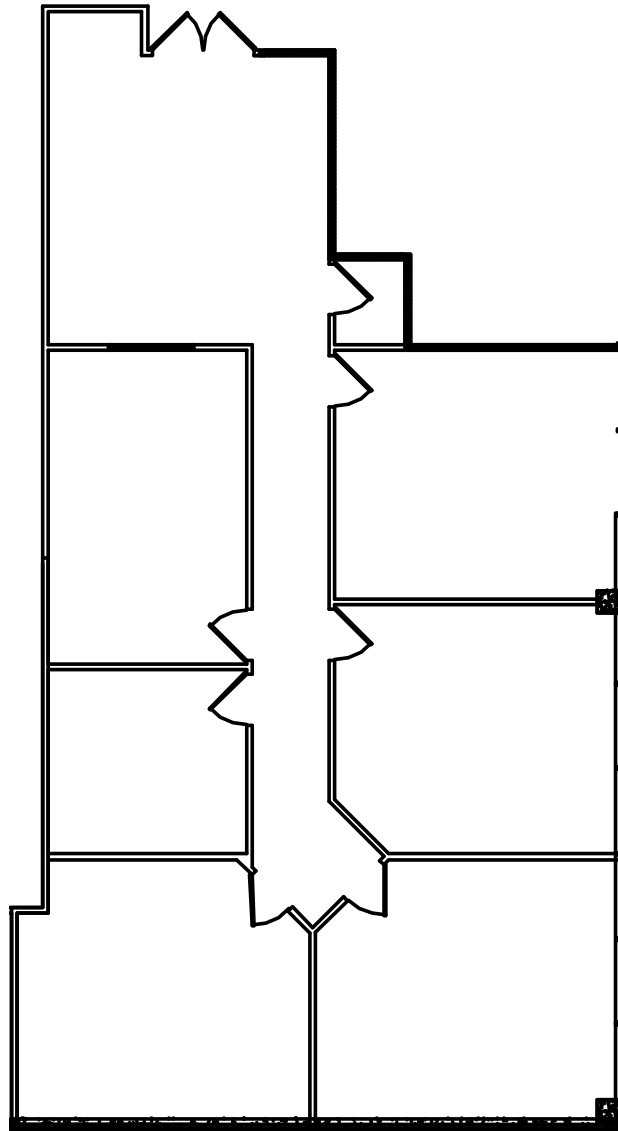
Scott Dever

408.615.3457

scott.dever@cushwake.com

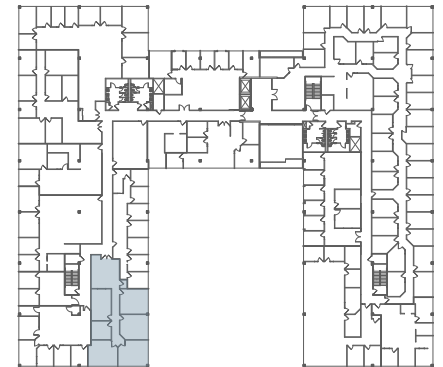
FLOOR PLAN

[◀ Back to Suite List](#)



Suite 210
2,303 SF

Available Now



For more information, please contact:

Walt Stephenson

408.615.3458

walt.stephenson@cushwake.com

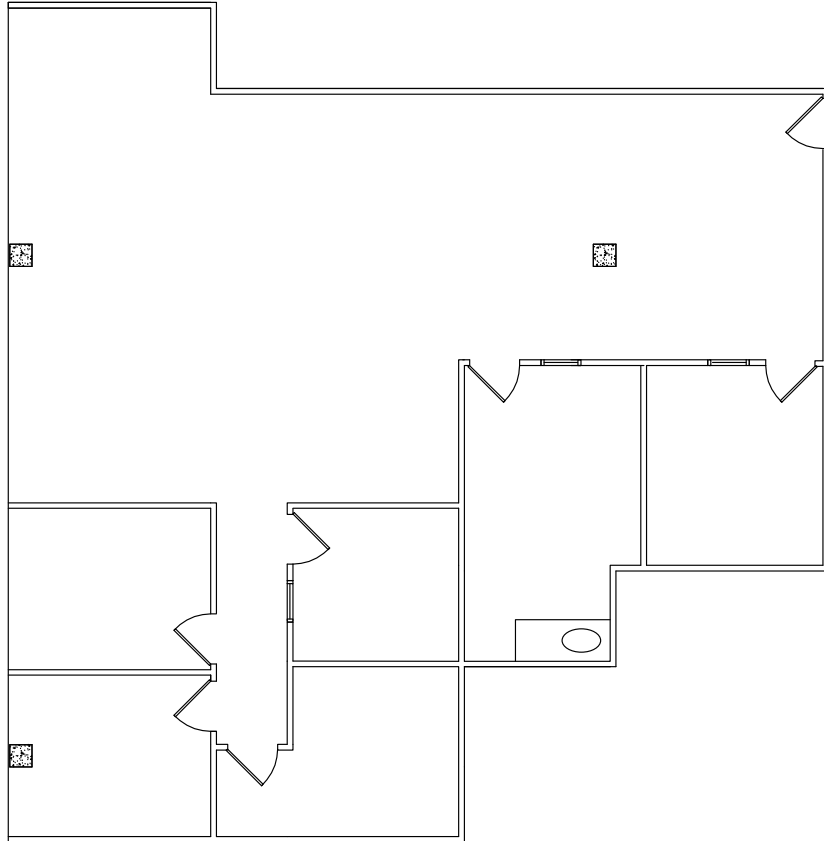
Scott Dever

408.615.3457

scott.dever@cushwake.com

FLOOR PLAN

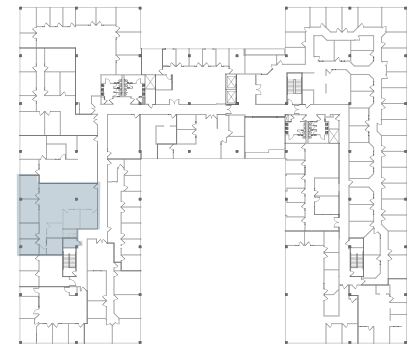
[◀ Back to Suite List](#)



Suite 220

2,352 SF

Available Now



For more information, please contact:

Walt Stephenson

408.615.3458

walt.stephenson@cushwake.com

Scott Dever

408.615.3457

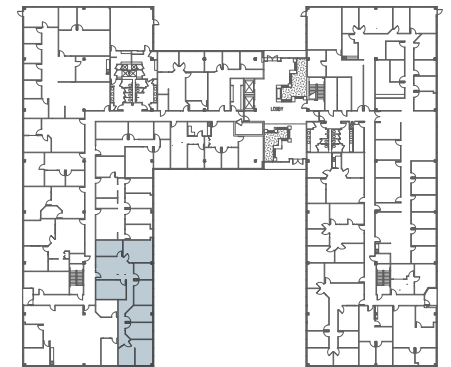
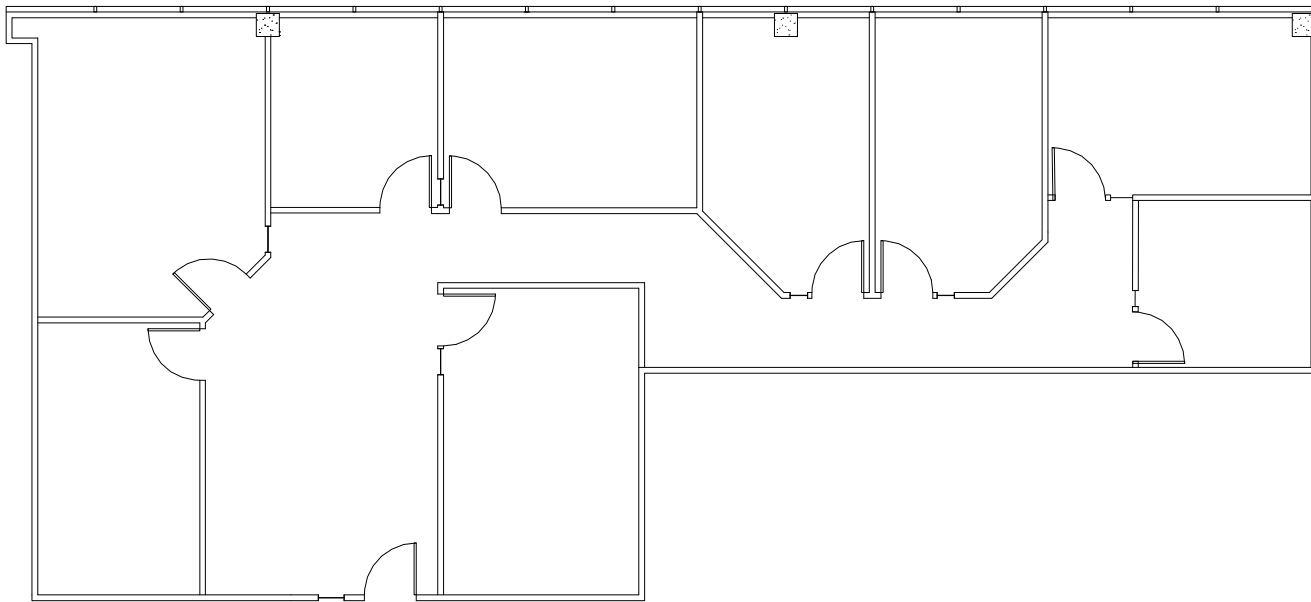
scott.dever@cushwake.com

FLOOR PLAN

[◀ Back to Suite List](#)

Suite 128
2,440 SF

Available Now



For more information, please contact:

Walt Stephenson

408.615.3458

walt.stephenson@cushwake.com

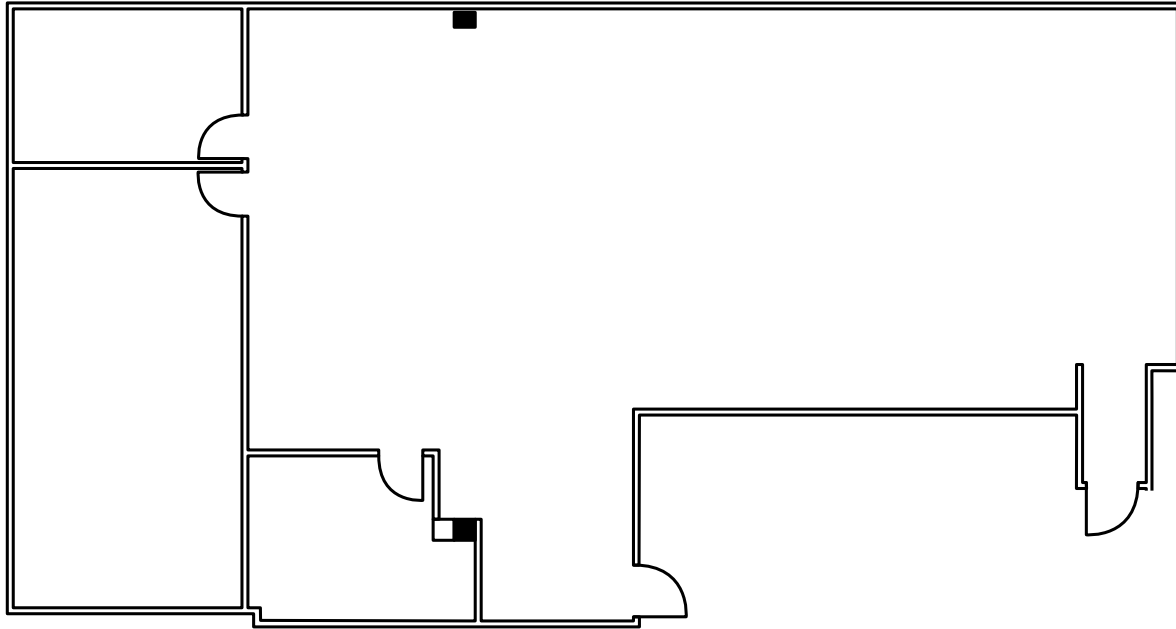
Scott Dever

408.615.3457

scott.dever@cushwake.com

FLOOR PLAN

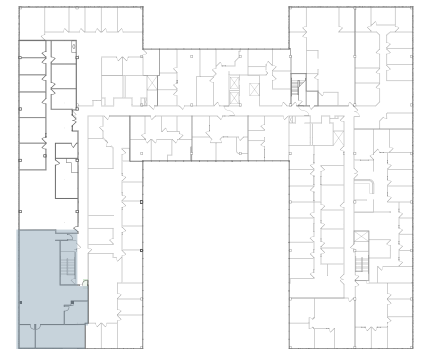
[◀ Back to Suite List](#)



Suite 345

3,283 SF

Available Now



For more information, please contact:

Walt Stephenson

408.615.3458

walt.stephenson@cushwake.com

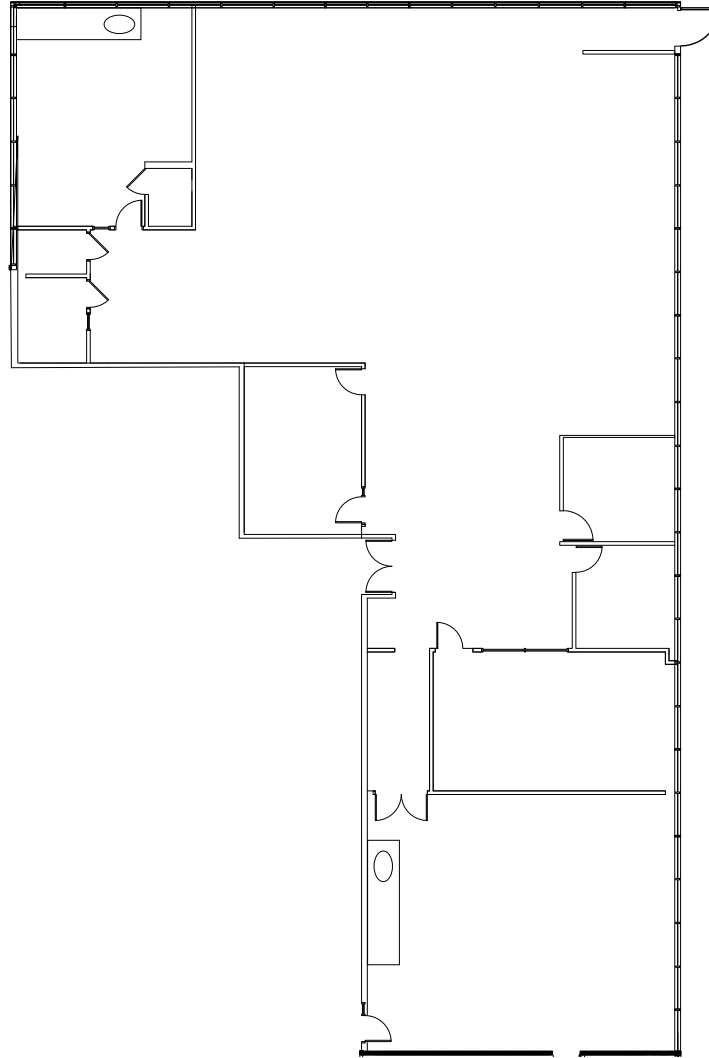
Scott Dever

408.615.3457

scott.dever@cushwake.com

FLOOR PLAN

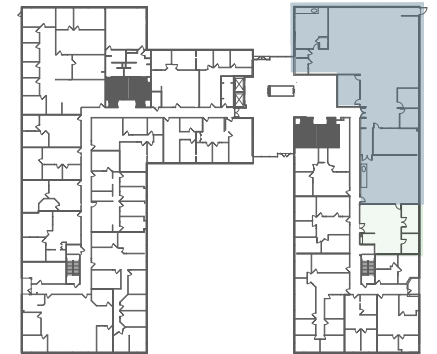
◀ Back to Suite List



Suite 161

up to 7,628 SF

Available Now



For more information, please contact:

Walt Stephenson

408.615.3458

walt.stephenson@cushwake.com

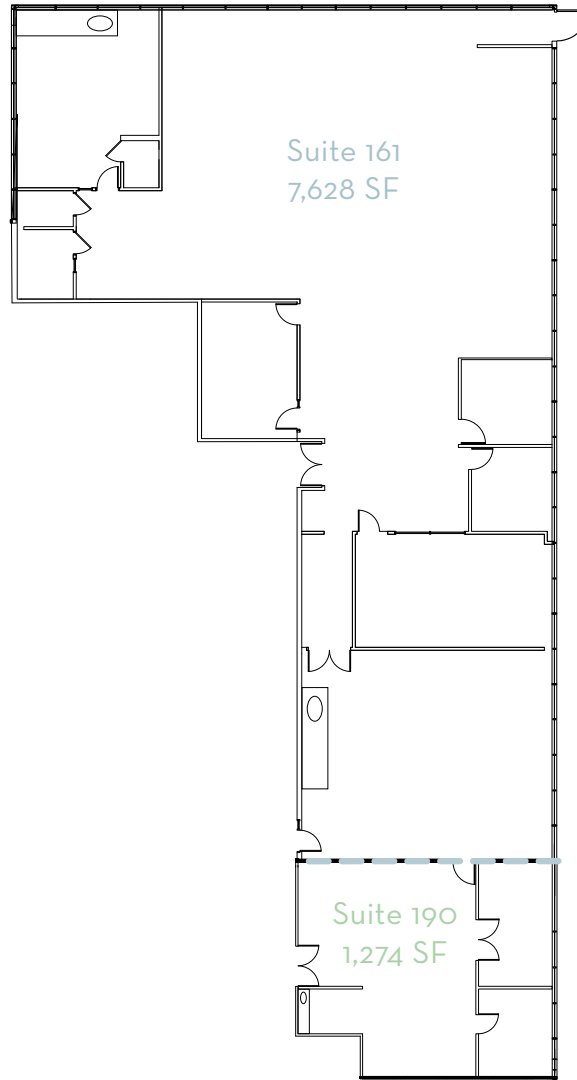
Scott Dever

408.615.3457

scott.dever@cushwake.com

FLOOR PLAN

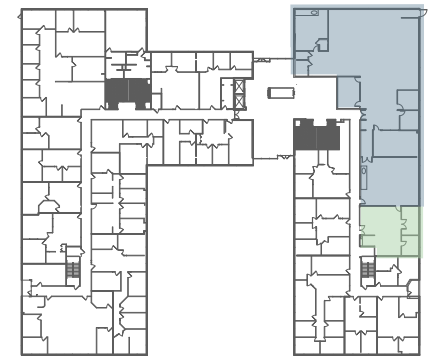
◀ Back to Suite List



Suite 161/190

up to 8,902 SF

Available Now



For more information, please contact:

Walt Stephenson

408.615.3458

walt.stephenson@cushwake.com

Scott Dever

408.615.3457

scott.dever@cushwake.com



BALENTINE

OFFICE PARK

Walt Stephenson

408.615.3458

walt.stephenson@cushwake.com

Lic. #01793438

Scott Dever

408.615.3457

scott.dever@cushwake.com

Lic. #01890552



©2026 Cushman & Wakefield. All rights reserved. The information contained in this communication is strictly confidential. This information has been obtained from sources believed to be reliable but has not been verified. NO WARRANTY OR REPRESENTATION, EXPRESS OR IMPLIED, IS MADE AS TO THE CONDITION OF THE PROPERTY (OR PROPERTIES) REFERENCED HEREIN OR AS TO THE ACCURACY OR COMPLETENESS OF THE INFORMATION CONTAINED HEREIN, AND SAME IS SUBMITTED SUBJECT TO ERRORS, OMISSIONS, CHANGE OF PRICE, RENTAL OR OTHER CONDITIONS, WITHDRAWAL WITHOUT NOTICE, AND TO ANY SPECIAL LISTING CONDITIONS IMPOSED BY THE PROPERTY OWNER(S). ANY PROJECTIONS, OPINIONS OR ESTIMATES ARE SUBJECT TO UNCERTAINTY AND DO NOT SIGNIFY CURRENT OR FUTURE PROPERTY PERFORMANCE. COE-PM-West-02.24.2026