

NEW STONY PLAIN ROAD REDEVELOPMENT

15912 Stony Plain Road, Edmonton, AB



RECENTLY REDEVELOPED | INCENTIVES AVAILABLE

PROPERTY DETAILS



RECENTLY REDEVELOPED



NEW ROOF AND EXTERIOR



EXCELLENT EXPOSURE



MULTIPLE BAYS AVAILABLE

MUNICIPAL ADDRESS 15912 Stony Plain Road, Edmonton, AB

LEGAL DESCRIPTION Plan 1924AM, Block 4, Lot 21-22

ZONING MU (Mixed Use)

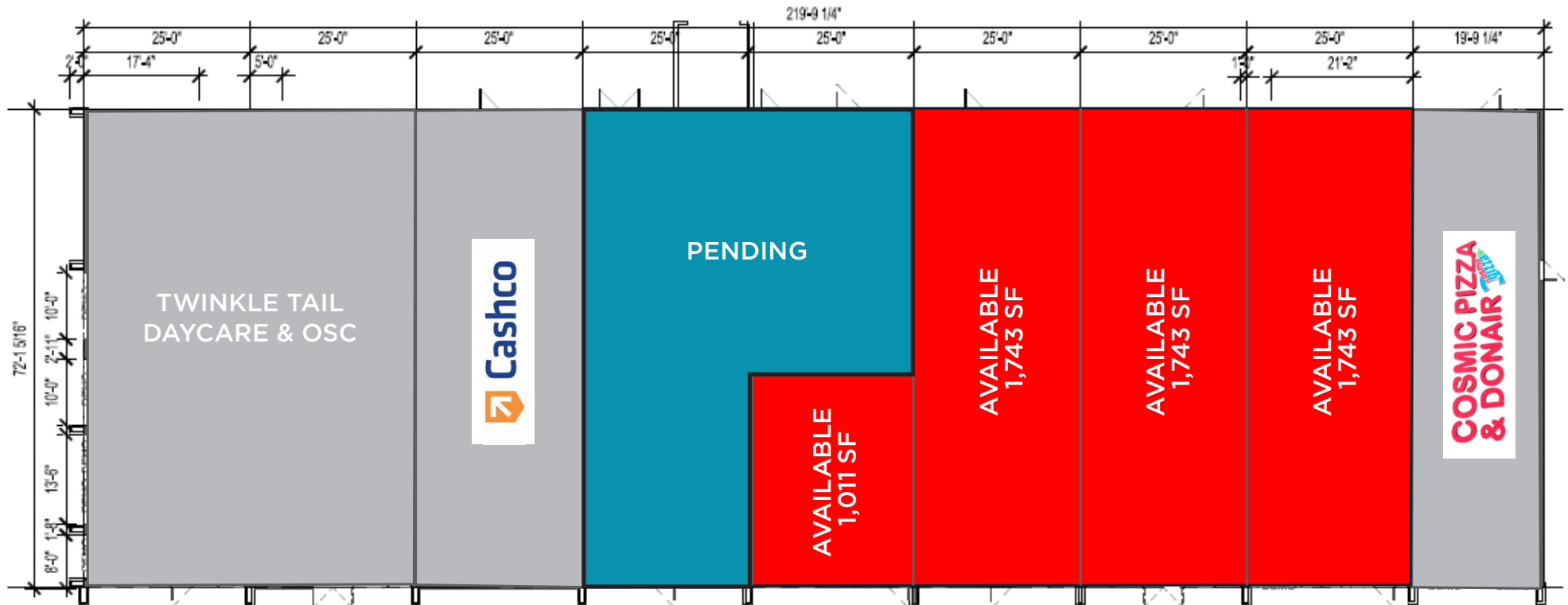
NEIGHBOURHOOD Britannia Youngstown

BUILDING SIZE 16,750 SF

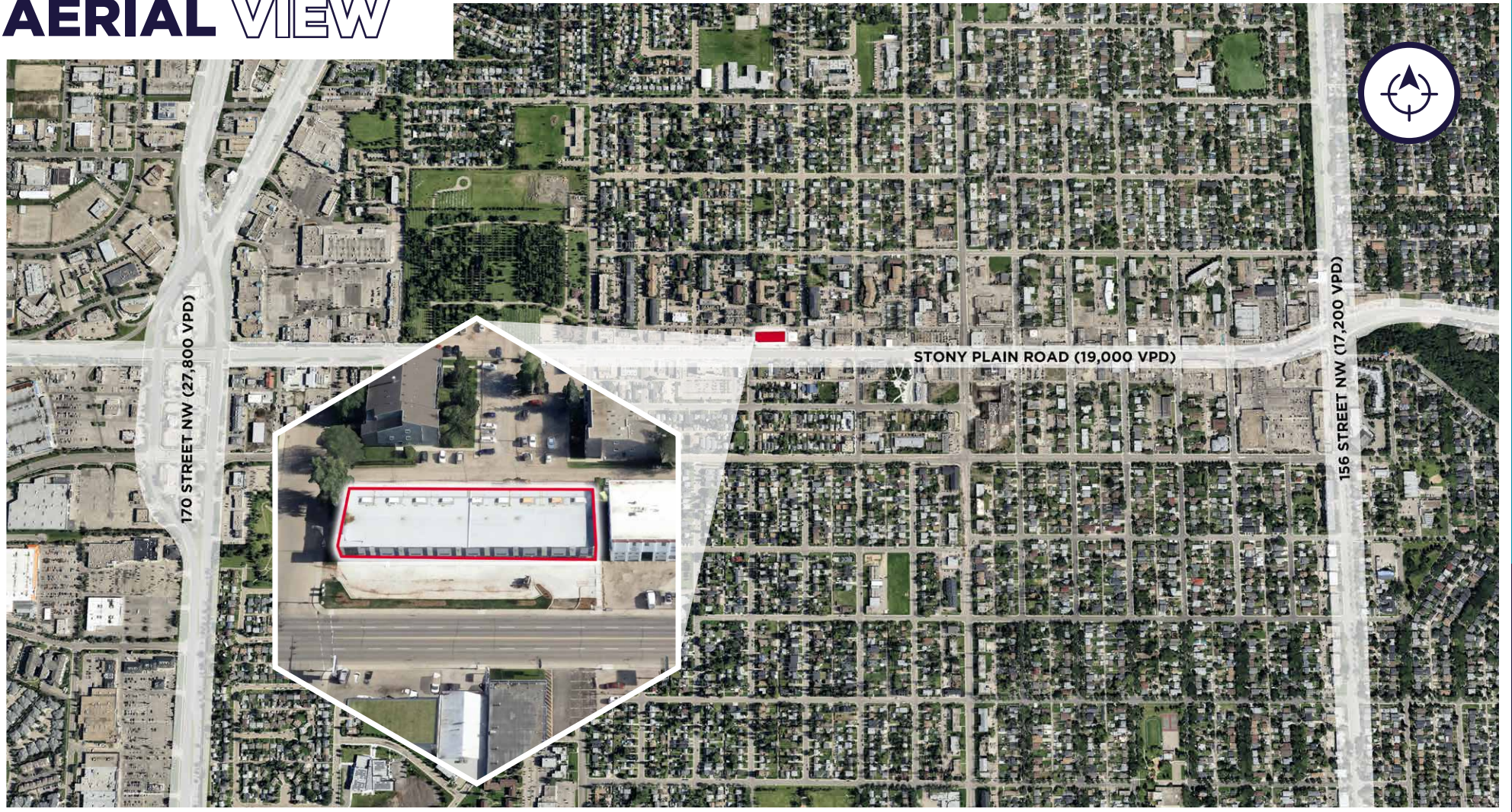
BUILT 2023

PARKING 17 Stalls, with rear parking for tenants

SITE PLAN



AERIAL VIEW



DEMOGRAPHICS



POPULATION

1KM	3KM	5KM
12,300	59,471	137,851



HOUSEHOLD

1KM	3KM	5KM
5,472	23,990	57,485



AVERAGE INCOME

1KM	3KM	5KM
\$82,897	\$120,563	\$125,723



VEHICLES PER DAY

19,000 on Stony Plain Road

