

537 DISCOVERY DRIVE, WEST CHICAGO, IL



FOR LEASE

±224,146 SQUARE FEET (DIVISIBLE TO ±113,037 SF)

±113,037 SF Available For Immediate Occupancy | Modern Distribution Facility With Heavy Power





FOR LEASE | 537 DISCOVERY DR. WEST CHICAGO, IL

Property Features

537 Discovery Drive located in West Chicago is situated within the DuPage Business Center Park and fronts Roosevelt Road/IL-38. The Class A property boasts high image pre-cast concrete and glass construction. The property is ideal for manufacturing and distribution, and offers move-in ready space options from ±113,037 to ±224,146 square feet.

Building Size:	400,088 SF
Site Size:	26.4 Acres
Year Built:	2022
Clear Height:	36'
Bay Size:	50'x51'
Lighting:	LED Throughout
Sprinkler System:	ESFR
Power:	1,600 Amps / 480 Volt
Taxes:	\$2.05/SF
CAM/Management:	\$0.70/SF (Includes Management)
Insurance:	\$0.12/SF
Lease Rate:	Subject to Offer

Available Space:	Option 1:	Option 2:
Premises:	±113,037 SF	±224,146 SF
Office Area:	±2,500 SF Spec	±2,500 SF Spec
Exterior Docks:	14 (Expandable to 26)	26 (Expandable to 48)
Drive-In Doors:	1 (12'x14')	2 (12'x14')
Car Parking:	149 Spaces	149 Spaces (Expandable)
Trailer Parking:	--	18 Stalls



Modern Distribution Facility

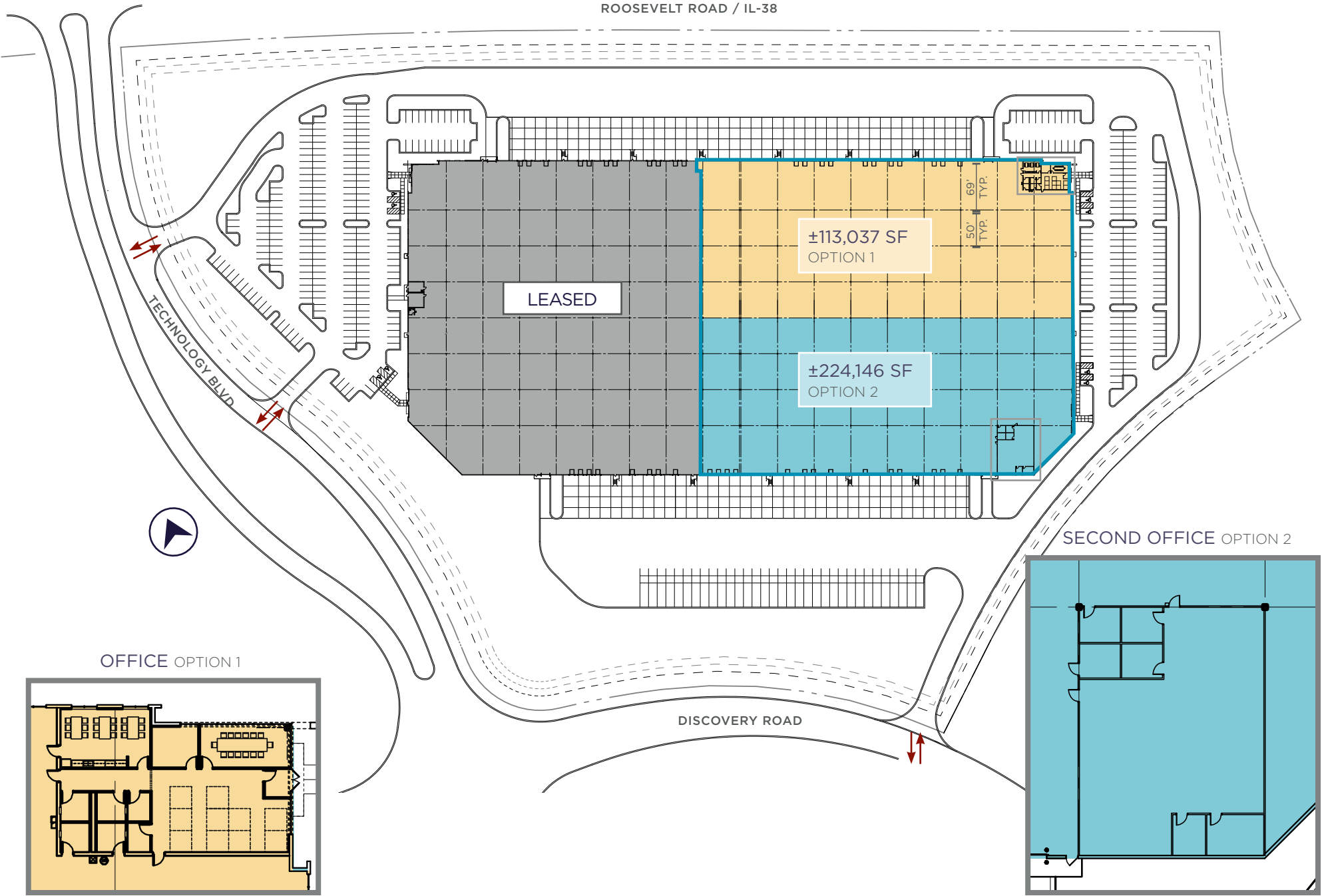


FOR LEASE | 537 DISCOVERY DR, WEST CHICAGO, IL

Site Plan

Flexible Lease Options
±113,037 SF to ±224,146 SF

ROOSEVELT ROAD / IL-38

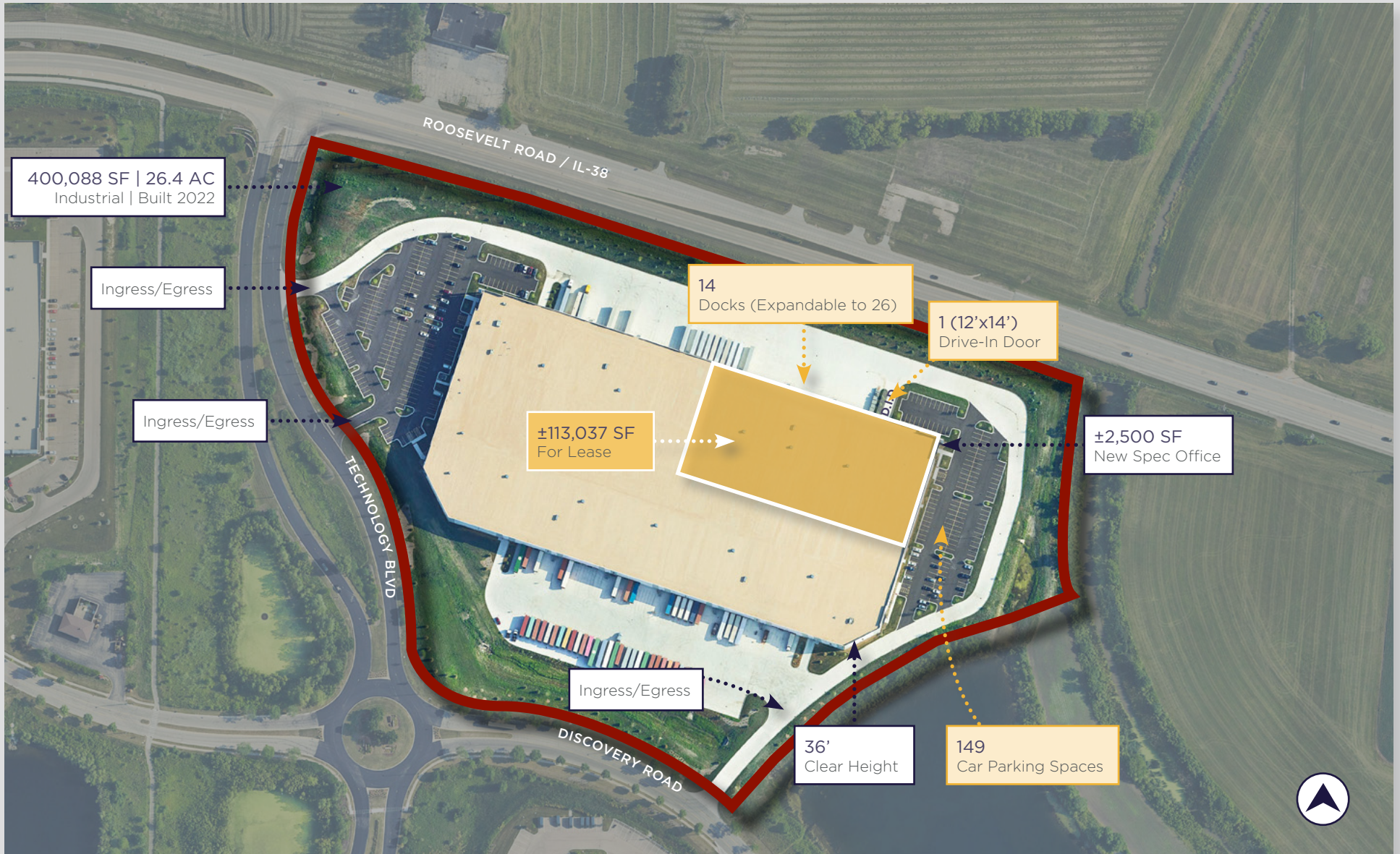




FOR LEASE | 537 DISCOVERY DR, WEST CHICAGO, IL

Option 1

±113,037 SF For Lease | Fronts Roosevelt Rd/IL-38





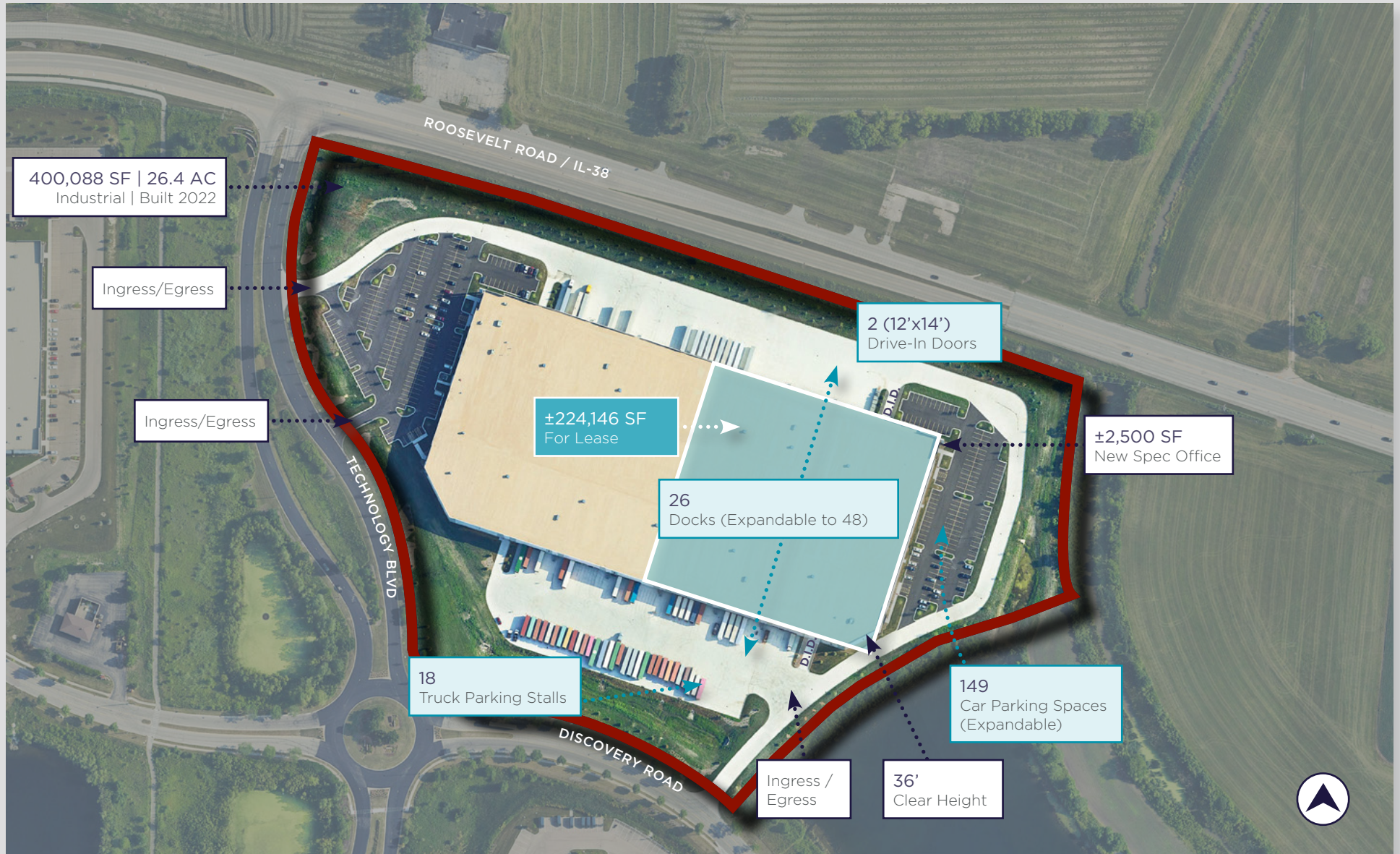
537
DISCOVERY DRIVE

SUITE 200

FOR LEASE | 537 DISCOVERY DR, WEST CHICAGO, IL

Option 2

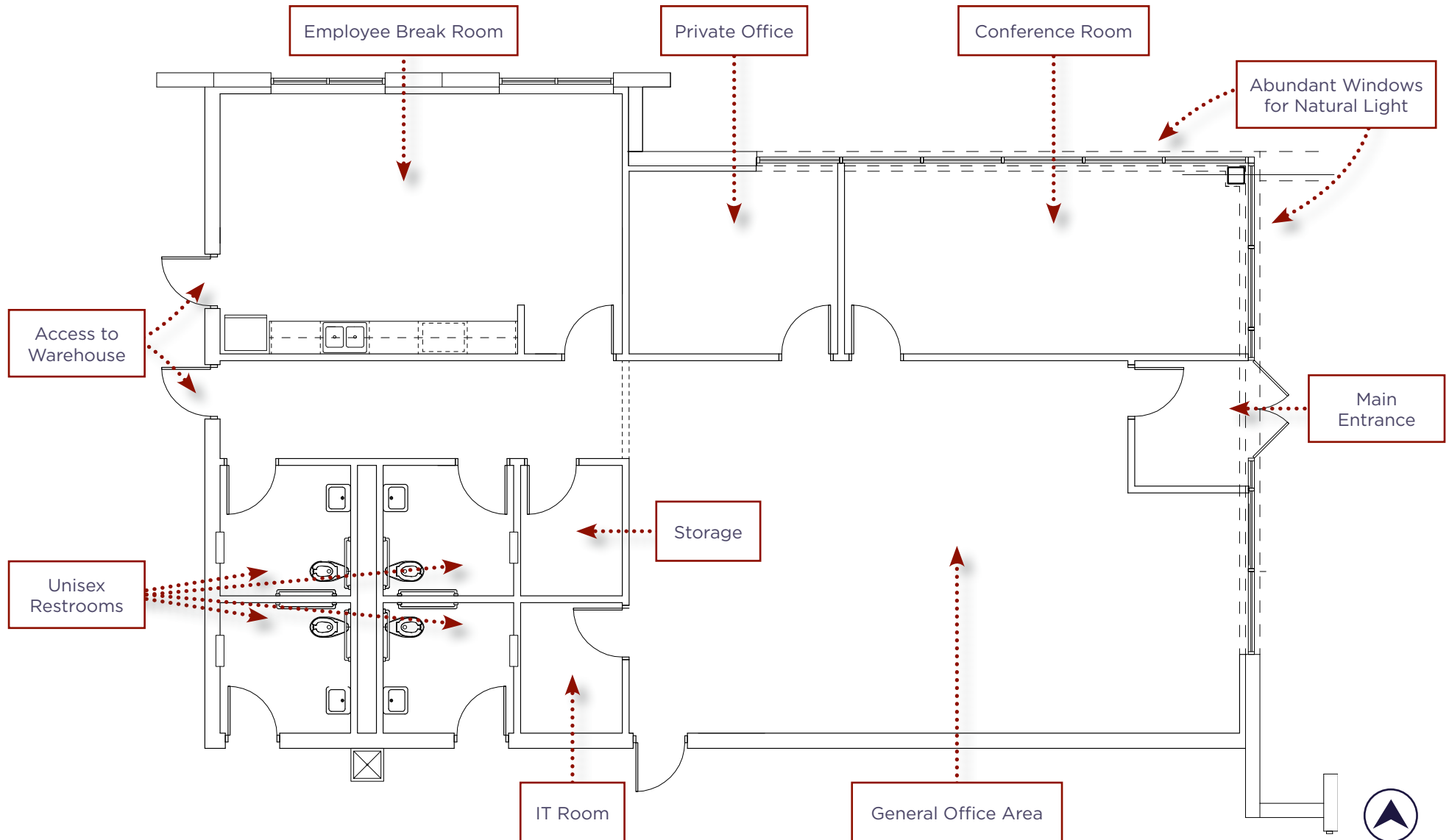
±224,146 SF For Lease | Partial Building



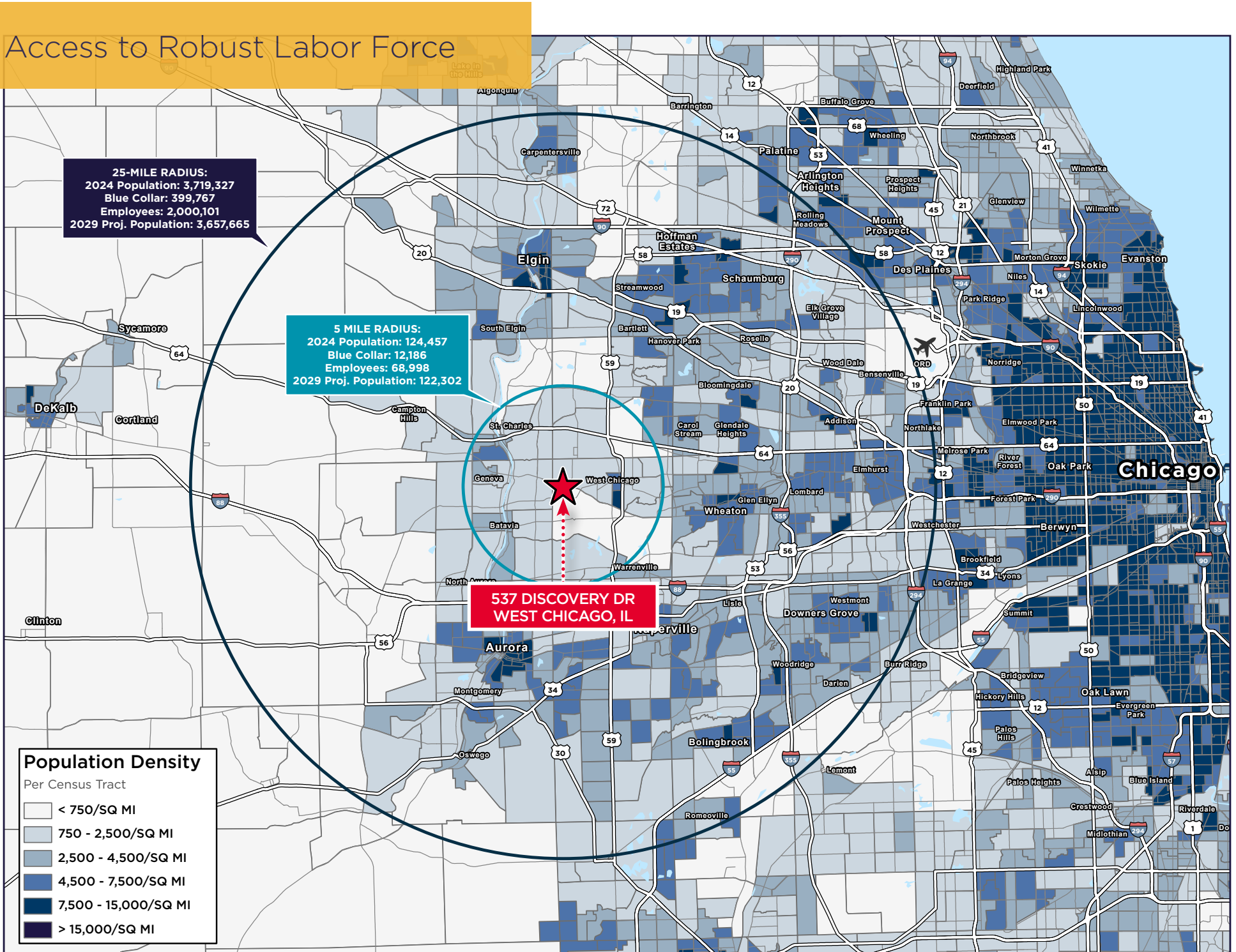


Spec Office Plan

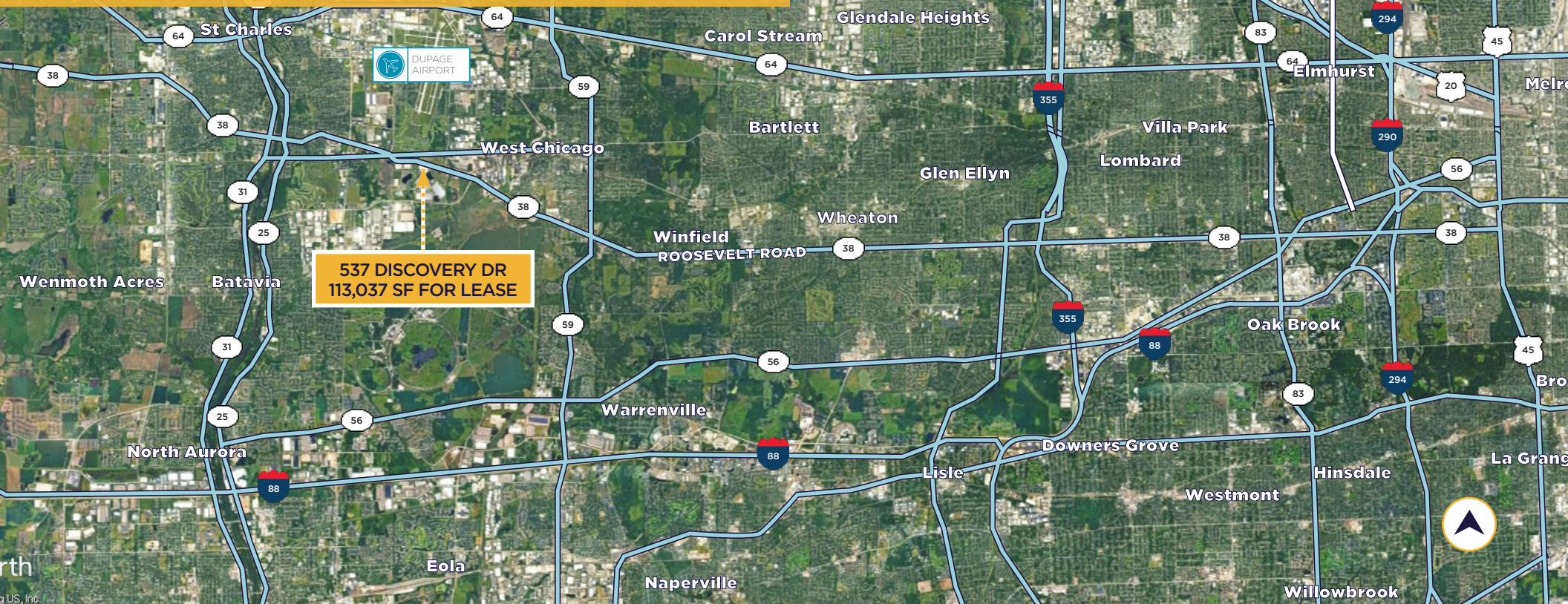
±2,500 SF of New Space



Access to Robust Labor Force



- » Central to Western Suburbs
- » Close Proximity to Major Arterial Routes
- » Access to Large Labor Pool
- » Potential Local Incentives Available



TO I-88
AT IL-59 INTERCHANGE

TO I-88
AT KIRK RD INTERCHANGE

TO I-355
AT IL-38 INTERCHANGE

TO O'HARE INTERNATIONAL
AIRPORT

TO CHICAGO CBD

FOR LEASE 537 DISCOVERY DR, WEST CHICAGO, IL

537 Discovery Drive

- » Flexible Lease Options
- » Available for Immediate Occupancy
- » Near Multiple Major Arterial Routes
- » Low DuPage County Taxes



CONTACT

MICHAEL MAGLIANO

Executive Managing Director

+1 847 518 3259

michael.magliano@cushwake.com

SETH COLE

Senior Associate

+1 847 845 3656

seth.cole@cushwake.com

DOUG PILCHER

Executive Director

+1 847 518 3285

doug.pilcher@cushwake.com

SYDNEY ITKIN

Senior Associate

+1 224 515 6018

sydney.itkin@cushwake.com



©2025 Cushman & Wakefield. All rights reserved. The information contained in this communication is strictly confidential. This information has been obtained from sources believed to be reliable but has not been verified. NO WARRANTY OR REPRESENTATION, EXPRESS OR IMPLIED, IS MADE AS TO THE CONDITION OF THE PROPERTY (OR PROPERTIES) REFERENCED HEREIN OR AS TO THE ACCURACY OR COMPLETENESS OF THE INFORMATION CONTAINED HEREIN, AND SAME IS SUBMITTED SUBJECT TO ERRORS, OMISSIONS, CHANGE OF PRICE, RENTAL OR OTHER CONDITIONS, WITHDRAWAL WITHOUT NOTICE, AND TO ANY SPECIAL LISTING CONDITIONS IMPOSED BY THE PROPERTY OWNER(S). ANY PROJECTIONS, OPINIONS OR ESTIMATES ARE SUBJECT TO UNCERTAINTY AND DO NOT SIGNIFY CURRENT OR FUTURE PROPERTY PERFORMANCE.