

# Available Office Suite in Superior Arts District

For Lease | 2155 Superior Avenue, Cleveland, Ohio 44114





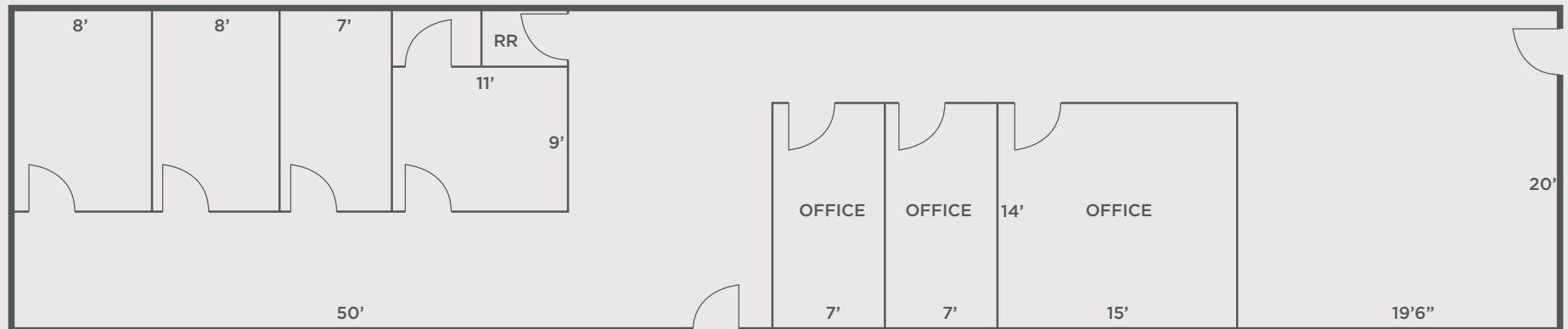
# 2155 Superior Ave

- 2,000 SF office available on 0.19 AC
- Located on Superior Avenue, a major thoroughfare within a rapidly redeveloping sector of the CBD with close proximity to CSU Campus & new police headquarters
- New in-place residential and commercial development in the area
- Located downtown in close proximity to highway access, restaurants, bars and entertainment
- Just steps away from cafe, perfect for meetings, catering, coffee, ect.
- Fantastic visibility with 25' of frontage on Superior Avenue

**Lease Rate: \$15.00/SF MG**

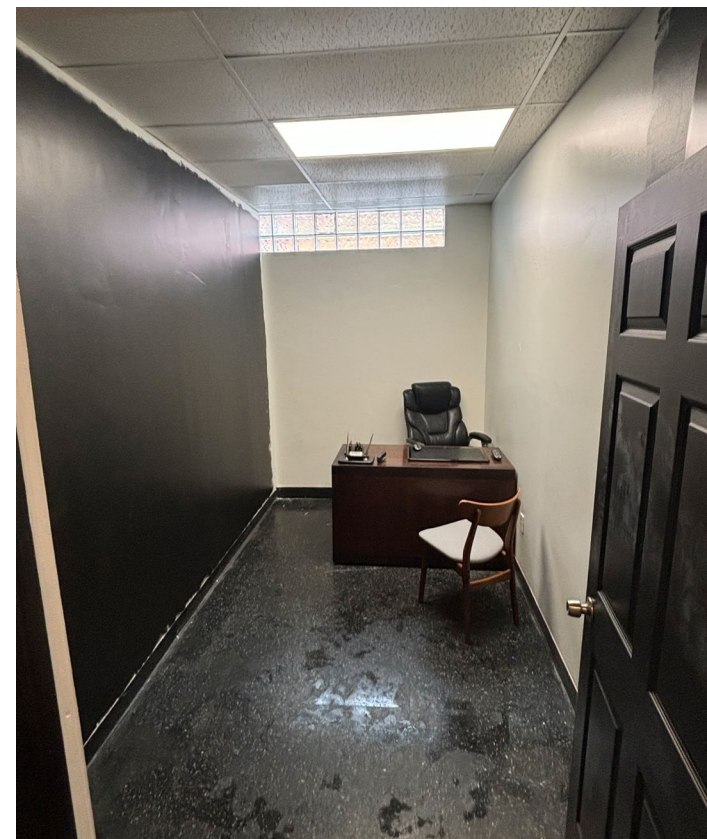


## Floor Plan



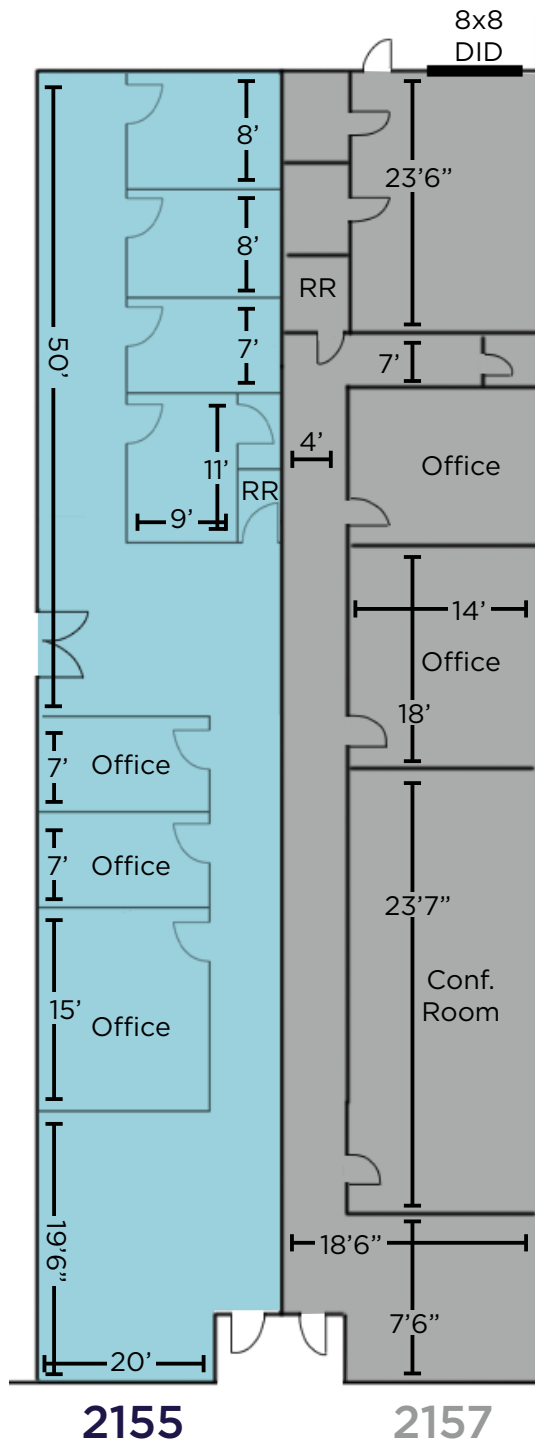
**2,000 SF Available Immediately**







# Site Plan



## Neighborhood Overview

Located within the Superior Arts District, in the heart of Downtown Cleveland. This up-and-coming neighborhood has seen substantial growth in popularity thanks to projects like the recently completed Townhome Development combined with the ongoing commercial redevelopment in the immediate area. Recent and future additions to the Superior Arts District include Cross County Mortgage Headquarters, Cuyahoga County offices and the new Cleveland Police Headquarters. Within a short walk you can expect to experience lodging, restaurants, new residential, entertainment and creative office space.

## Demographics

**237,472**  
Population  
(2024 | 5 Mile)

**34.4**  
Median Age  
(2024 | 5 Mile)

**111,154**  
Households  
(2024 | 5 Mile)

**\$67,651**  
Household Income  
(2024 | 5 Mile)

**11,405**  
Total Businesses  
(2024 | 5 Mile)

**164,200**  
Total Employees  
(2024 | 5 Mile)



WAREHOUSE DISTRICT

Johnny's Downtown Johnny's Little Bar MALLORCA CLEVELAND CHOP IVY

surroundings home décor ACQUA DI LUCA

aloft BOLD FITNESS CLUB PUNCH BOWL SOCIAL AlleyCat Margaritaville FWD LINDEY'S LAKE HOUSE

NorthCoast Harbor NUEVO RTA AMTRAK Rock & Dock at North Coast Harbor Marina

Galleria AT GRIFFIN the

ideastream public media CROWNE PLAZA CIBRERO DISTRICT CORROS HOUSE



Shooters Music Box Supper Club EMPLOY NAUTICA QUEEN

TOWER CITY CENTER RENAISSANCE UNITED STATES POSTAL SERVICE JACK CLEVELAND

CVS pharmacy heinen's ALEX THEATER GEIGER'S MARBLE ROOM SHAKE SHACK WILBERTS CityTAP OTAM noodle

4TH Go Town GOMA BLUE HAVANERO MABEL'S BBQ





## 2155 SUPERIOR AVENUE CLEVELAND, OHIO 44114

### RYAN CURTIN

Associate

[rcurtin@crescorealestate.com](mailto:rcurtin@crescorealestate.com)

+1 216 232 4105

### JOSEPH V. BARNA, SIOR

Principal

[jbarna@crescorealestate.com](mailto:jbarna@crescorealestate.com)

+1 216 525 1464



### Cushman & Wakefield | CRESCO

6100 Rockside Woods Blvd, Suite 200  
Cleveland, Ohio 44131

[crescorealestate.com](http://crescorealestate.com)

©2025 Cushman & Wakefield. All rights reserved. The information contained in this communication is strictly confidential. This information has been obtained from sources believed to be reliable but has not been verified. NO WARRANTY OR REPRESENTATION, EXPRESS OR IMPLIED, IS MADE AS TO THE CONDITION OF THE PROPERTY (OR PROPERTIES) REFERENCED HEREIN OR AS TO THE ACCURACY OR COMPLETENESS OF THE INFORMATION CONTAINED HEREIN, AND SAME IS SUBMITTED SUBJECT TO ERRORS, OMISSIONS, CHANGE OF PRICE, RENTAL OR OTHER CONDITIONS, WITHDRAWAL WITHOUT NOTICE, AND TO ANY SPECIAL LISTING CONDITIONS IMPOSED BY THE PROPERTY OWNER(S). ANY PROJECTIONS, OPINIONS OR ESTIMATES ARE SUBJECT TO UNCERTAINTY AND DO NOT SIGNIFY CURRENT OR FUTURE PROPERTY PERFORMANCE.